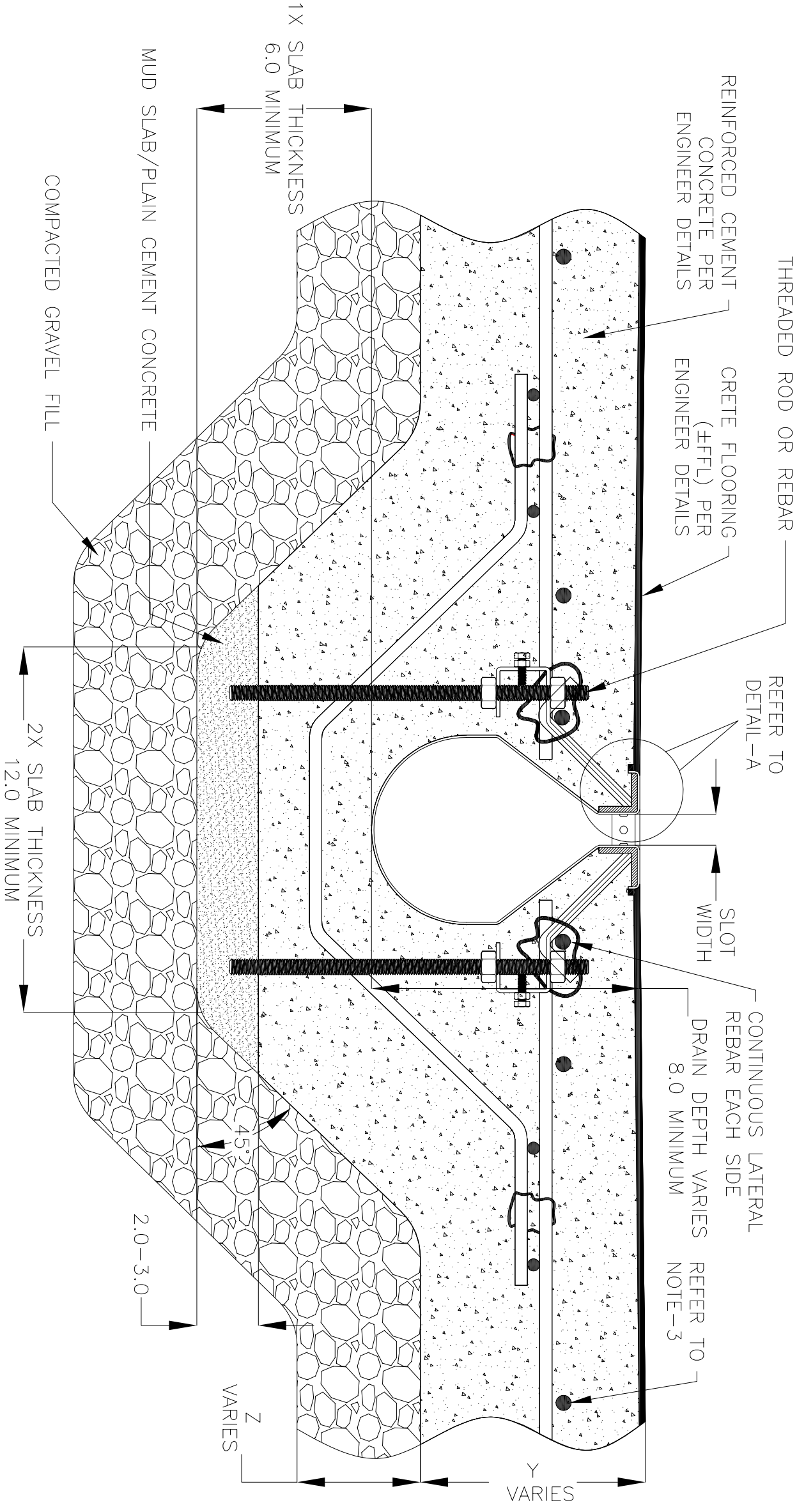
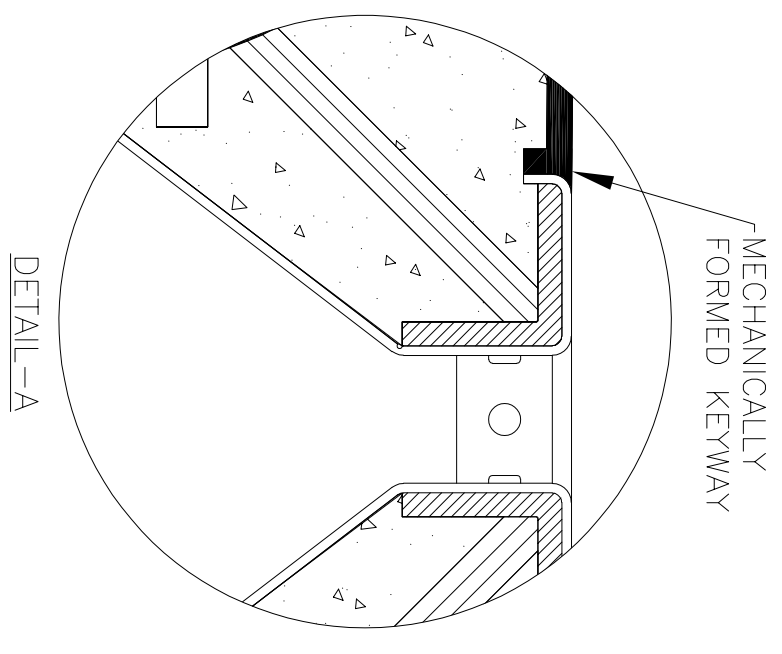
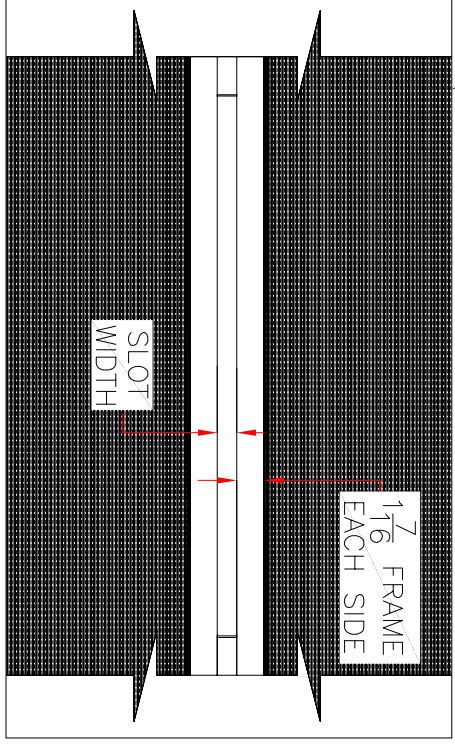


NOTES: UNLESS OTHERWISE SPECIFIED

1. ALL DIMENSIONS ARE IN INCHES.
2. DRAIN BODY MATERIAL: 1 4GA STAINLESS STEEL T304/T316
3. SPECIFYING ENGINEER IS RESPONSIBLE FOR CONCRETE ENCASEMENT AND REINFORCING BASED UPON APPLICATION AND LOCAL CODES.
4. REFER TO <https://info.slotdrainsystems.com/installresources> FOR INSTALLATION INSTRUCTIONS.



CRETTE FLOORING (FFFL) PER ENGINEER DETAILS



REVISIONS		DATE	BY
REV	DESCRIPTION	6/8/2019	DK
0	INITIAL RELEASE - R0	12/2/2019	DK
1	UPDATED DRAIN SECTIONS.	12/2/2020	DK
2	UPDATED DRAIN LAYOUT	7/13/2021	DK
3	UPDATED THE REBAR DETAILS		

10000 SERIES SLOT DRAIN INSTALLATION DETAILS

ALL DRAWINGS ARE THE EXCLUSIVE PROPERTY OF SLOT DRAIN SYSTEMS. ANY REPRODUCTION IN PART OR IN WHOLE IS PROHIBITED WITHOUT PROPER CONSENT.

SLOT DRAIN SYSTEMS
 855.497.7508
 info@slotdrainsystems.com
 www.slotdrainsystems.com

DRAWING TITLE		REV.	
CRETTE FLOOR-NEW CONSTRUCTION INSTALLATION		3	
DRAIN SERIES		10000 SERIES SLOT DRAIN	
DWG NO.	SIZE	SCALE	SHEET
IN-SD10000-001-R3	B	NTS	1 OF 1