

WORKSHOP ESSENTIALS



1300 577 541 | sales@levanta.com.au | levanta.com.au

INTRODUCING LIFTMAX - SUPPORT. EVERYTIME.

LM65W Wireless Column Lifts

A high quality 6.5T industry-leading lifting solution

The LM65W wireless column lifts are the most popular model in our entire range. With its robust construction, 26T capacity when used in a set of 4 and proven track record it is the first choice for any heavy duty workshop anywhere in Australia

- > Full function control on every column
- > Adjustable lifting forks
- > High quality rechargeable batteries
- > Superior mobility & maneuverability

**In stock
for immediate delivery**



PRODUCT OF ITALY



LM86W Wireless Column Lifts

8.6T lifting capacity for heavy duty transport, mining & agriculture applications

Using industry leading wireless connection technology and battery power setups, the LiftMax range of Italian mobile column lifts are an essential and versatile lifting solution if you're looking to increase the productivity and efficiency of your workshop.

The LM86 series column lifts can be operated in either wireless (for the ultimate mobility) or conventional cable format (a failsafe backup system when required), depending on your needs.

- > Synchronisation via wireless technology or conventional cables
- > 7" colour LCD touch screen
- > Adjustable lifting forks
- > Premium quality gel cell storage batteries



LIFTMAX®
SUPPORT. EVERYTIME.

Heavy duty, durable roller brake testers & shakers

Need to bring your brake testing in-house? Levanta's range of roller brake testers and shakers are ruggedly engineered to provide superior performance, accuracy and longevity for your heavy vehicle workshop.



BM18200F - 20T axle weight

In-ground (lifting bed) roller brake tester

The durable BM18200 features hydraulic lifting beds for load simulation. Each roller bed is lifted on 4, 16T rated hydraulic cylinders and is controlled by software with built-in safety features to protect the vehicle and operator. Additional Chassis Load Simulation options are available.



BM14200F-20T Axle weight

In-Ground Roller Brake Tester

BM14200F is a strong in-ground brake tester for light and heavy vehicles with an axle load up to 20T. Able to accommodate vans, light and heavy trucks, it's ideally suited for vehicle inspections and workshop applications.



BM20200 - 20T Axle weight

Surface Mount / Mobile Roller Brake Tester

BM20200M is ideal if your business has multiple workshops that could benefit from sharing a brake tester. Handling an axle load up to 20T, it features automatic axle weighing and optional axle load simulation.



BM53000F

In-ground play detector

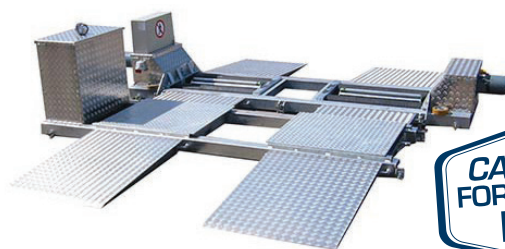
Installed over an inspection pit, this powerful yet gentle unit which has a pushing capacity of 4.5T can be used with both plates moving together, or individual one-side-only operation to allow you to focus on potential problem areas.



BM53000M

Mobile play detector

This powerful mobile play detector which has a pushing capacity of 4.5T can reveal even the smallest amount of play in a vehicle's suspension and steering components — without causing any damage to the components. Pair it with a BM20200 Mobile roller brake tester to form the basis of a mobile test lane.



CALL TODAY
FOR AN ONSITE
DEMO

JOSAM heavy vehicle wheel aligners



Cam Aligner

This compact wheel alignment system enables you to offer quick and accurate wheel alignment services for trucks and buses. Cam Aligner's unique rolling method lets you take measurements while the vehicle is in the driving position.

With the vehicle's chassis centreline as a reference, JOSAM's patented camera technology calculates measurements such as:

- > Toe, steering box position, camber, out of square, parallelism, and axle offset
- > Caster, KPI, toe out on turns, and max turn

Wireless technology then transmits data between the measuring units and the computer. User-friendly software guides the user through the measuring process and prints out measurement reports of values, before and after alignment.

It's a more efficient way for your workshop to provide accurate wheel alignments.

KAR250 Heavy duty truck knuckle lift

With a lift capacity of 25t, this massive heavy duty knuckle lift is perfectly suited to lifting trucks, buses and any other large capacity vehicle.

Available in surface or flush mount, the KAR 250 is an electro-hydraulic pantograph lift with vertical raising, free of interference on the floor, and ideal for heavy vehicle maintenance and lifting.

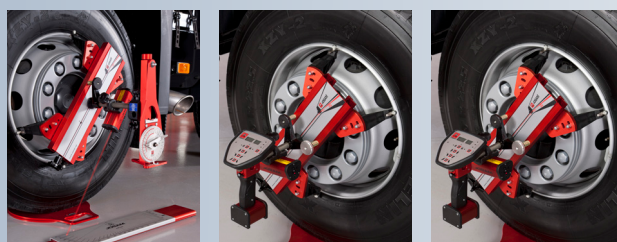
- > 25t lifting capacity
- > Flush or surface mount versions available
- > Electro-hydraulic pantograph vertical raising
- > Interference free floor space
- > Also available in 20T, 35T and 54T variants



Laser AM heavy vehicle wheel aligner

When the driver steers the truck straight ahead, he/she assumes that the wheels and chassis roll straight ahead.

The driver controls the front wheels and decides on their direction. But the rest of the wheels can be rolling in another direction if the axles are not correctly positioned in relation to the longitudinal centre line of the truck or if the axles are bent. It doesn't have to be a big displacement of the axle to cause a noticeable effect.



HPA WHEEL SERVICE EQUIPMENT

B650 Electronic digital wheel balancer

- > Manual input of wheel diameter and distance
- > Includes wheel lifter up to 150kg
- > 6-16 Seconds Average Measuring Time
- > Diameter Input Range 8"-28"
- > Width input range 1.5"-20"
- > Supplied with; calibration weights, weight pliers, calipers & quicknut
- > 240V AC
- > 100% Manufactured in Italy



B700 Self-diagnosing wheel balancer

- > Electro automatic input of wheel diameter and distance
- > Widescreen monitor
- > Includes wheel lifter up to 200kg
- > 8-18 Seconds average measuring time
- > Diameter input range 7"-30"
- > Width input range 1.5"-22"
- > Supplied with; calibration weights, weight pliers, calipers & quicknut
- > 240V AC
- > 100% Manufactured in Italy



F240A Compact heavy vehicle tyre changer

- > Electro hydraulic
- > Suspended control console
- > Clamping range 14"- 26"
- > Maximum wheel diameter 1400mm
- > Maximum wheel width 30"
- > 240V AC
- > 100% Manufactured in Italy



**In stock
for immediate
delivery**

F560 Heavy vehicle & Ag tyre changer

- > Electro hydraulic
- > Wired mobile control console
- > 2 Speed with manual tool rotation
- > Clamping range 14"- 56"
- > Maximum wheel diameter 2300mm
- > Maximum wheel width 1065mm
- > 415V 3PH
- > 100% Manufactured in Italy



2 year warranty on all HPA wheel service equipment

TOUGH, ROBUST AIR HYDRAULIC JACKS



Quality European-made Lifting Equipment

Enjoy a 10 year warranty from AC Hydraulic

All AC Hydraulic products are covered by a 10 year warranty on frame, chassis, and steel structures, as well as a 3 year warranty on the hydraulic system (pump and cylinder).

B25-2 Portable air hydraulic jack

This small, lightweight and seriously low clearance jack is highly manoeuvrable and features portable two-stage lifting capacity. With its low minimum height of only 162mm and low weight of 27kg, the B25-2 is the ideal solution for your mobile service team.

Easy to operate, the B25-2's handle can be used for carrying, lifting, lowering and manoeuvring, while the innovative design means no loose tubes, handles or valves.

- > Low minimum height
- > Easy to carry and store
- > 2 stage capacity:
 - Stage 1 - 234mm - 25t
 - Stage 2 - 317mm - 10t
- > Includes 2 extensions: 50mm and 100mm



25-2 Dual stage air hydraulic jack

The ideal jack for buses and trucks, the 25-2 offers a two stage ratio lift capacity with a double height option and minimum height of 183mm.

Designed for heavy duty, intensive commercial use, it's loaded with safety features including built in safety overload valve, hand operated dead man's control for optimum safety when lifting and lowering.

- > Two stage ratio lift capacity
 - Stage 1 - 275mm lift - 25T capacity
 - Stage 2 - 377mm lift - 10T capacity
- > Minimum height 183mm
- > Includes 2 extensions: 50mm and 100mm



50-3 High tonnage jack

Designed with heavy buses and trucks in mind, the 50-3 offers you a three stage ratio lift capacity with a triple height option. Boasting a low minimum height of only 151mm, it features a 1355mm standard handle length for safe and easy operation.

- > Three stage ratio lift capacity
 - Stage 1 - 210mm lift - 50T capacity
 - Stage 2 - 265mm lift - 25T capacity
 - Stage 3 - 335mm lift - 10T capacity
- > Minimum height 150mm
- > Includes 2 extensions: 50mm and 100mm



Advanced pit jacking systems

GD200-2ML

Boasting a range of lift capacities, this rapid and precise air hydraulic unit features high speed ram travel.

This heavy duty jacking beam has a simple modern design with the control panels positioned at an ergonomic working height. GD-2's twin individually controlled rams offer safe and balanced lifting.

The GD-2 is ideal for lifting cars, vans and light trucks, making it a great heavy duty lifting addition to your workshop.

- > Choice of lift capacities including 10 / 15 / 20t
- > Twin ram jacking beam
- > Adjustable frame
- > Comprehensive options range



GGD150U Air hydraulic floor pit jack

Featuring traversing telescopic cylinder

Boasting a 15t lift capacity, this is a flexible and multi-use pit jack suitable for most lifting applications. With its traversing telescopic cylinder, it's perfect for use in both pits and under vehicle lifts.

- > 15t lift capacity
- > Traversing cylinder
- > Spring loaded wheel support
- > Base frame fitted with bearings
- > Optional Gearbox saddle available



Workshop equipment

LWS045-1460-000

90L Mobile Waste Oil Drainer and Basin with Tool Holder

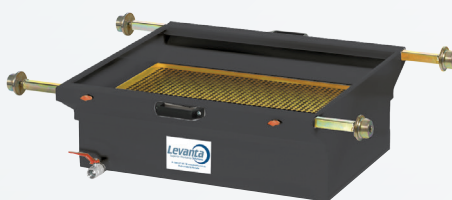
- > 90 litre Tank capacity with level indicator
- > Basin abs 3 sections tool holder with ergonomic and swivel 360° abs funnel, with breakwater grate for drip the substituted oil filters
- > Pneumatic air emptying (max pressure 0,5 bar)



LWS046-1457-000

90 Litre Workshop Waste Oil Pit Drainer

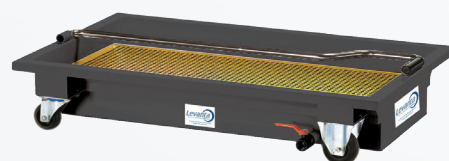
- > Breakwater grate on the base of the tank
- > Breakwater grate for drip the substituted oil filters
- > Adjustable wheeled supports (min 800mm – max 1,200mm)
- > F 3/4" G exhaust ball valve



LWS047-1459-G00

Portable Low Level 120 Litre Oil Drainer

- > Wheeled exhausted oil drain unit 120 l
- > Tank capacity 120 l
- > Breakwater grate on the base of the tank
- > Breakwater grate for drip the substituted oil filters
- > 2 swivelling wheels Ø80 mm



LWS074-4506-415

Closed Oil Reel with Built-in 1/2" Hose

- > Synthetic black rubber hose 1SC 15 m – Ø 1/2"
- > Inlet-outlet M1 1/2" G – M1 1/2" G
- > Galvanized connection
- > Swivelling joint 90° galvanized
- > Polyurethane seals



LWS070-1406-515

Closed Oil Reel with Built-in 3/4" 15m Hoses

- > Synthetic black rubber hose 1SC 15 m – Ø 3/4"
- > Inlet-outlet M3/4" G – M3/4" G
- > Galvanized connection
- > Swivelling joint 90° galvanized
- > Polyurethane seals



LWS024-1243-A00

Digitally Metered Oil Gun with Re-calibrating Features

- > Rubber protection
- > Handle with F 1/2" swivel joint
- > Flexible end 90°
- > Manual drop valve Ø 12 mm



LWS022-1298-E00

Oil Drum Trolley Kit

- > 1 x Double-acting air-operated oil pump Mod.605 ratio 5:1 Delivery capacity 28 l/min
- > 1 x Trolley for 180-220 Kg barrels
- > 1 x R1 hose 1/2 F-F length 5m
- > 1 x Hose reel fixed FOR OIL 160 bar Mod. F-400 WITH HOSE
- > 1 x Oil digital dispensing nozzle



LWS020-1198-000

Mod.605 5:1 Ratio Air Operated Oil Pump

- > Delivery capacity 28 l/min
- > For wall-fixing or fixed positions.
- > With different accessories it allows alternative possibilities of application.
- > Polyurethane seals
- > With threaded ring for drum connection



LWS020-1178-000

Mod.803 3:1 Ratio Air Operated Oil Pump

- > Delivery capacity 40 l/min
- > For standard barrels of 180-220 L (shank length 940 mm)
- > Polyurethane seals
- > With threaded ring for drum connection





OPTIONAL AS3
GEARBOX SADDLE

VLT12 Transmission jack

Especially designed for lifting heavy truck transmissions, the VLT12 is a stable and manoeuvrable jack with a lift capacity of 1.2t.

With a wide range of features and a focus on safety, this is a great heavy duty hydraulic transmission jack for busy commercial workshops.

- > 1.2 lift capacity
- > Heavy truck transmission specialist
- > Built in quick lift
- > Optional AS3 gearbox saddle (Pictured)



Quality European-made Lifting Equipment

Enjoy a 10 year warranty from
AC Hydraulic

All AC Hydraulic products are covered by a 10 year warranty on frame, chassis, and steel structures, as well as a 3 year warranty on the hydraulic system (pump and cylinder).



WTA-500 Commercial hydraulic wheel trolley

When you're removing large wheels and brake drums, you need a reliable and flexible wheel trolley to manoeuvre around the workshop. The durable WTA-500 is ideal.

Ideal for use on vans, trucks and buses, the WTA-500 can lift up to 500kg, making light work of heavy rolling.

- > 500kg lift capacity
- > Pedal operated pump
- > 360 degree revolving wheels



WT-1500NT Wheel trolley

Ideal for use on tractors, agricultural and contractors' machinery, the WT-1500NT can easily lift up to 1.5t. It assists with the efficient removal of large wheels, as well as deep-treaded tractor tyres.

- > 1.5t lift capacity
- > Precise and easy lifting
- > Side adjustable lifting arms



P60EH2 Workshop press

The P60EH2 is a versatile, safe and durable heavy duty press with a massive 60t capacity. Ideally suited for truck workshops and heavy industry, this is the perfect press for high level productivity and precise working.

- > 60t adjustable capacity
- > Electro-hydraulic 2 stage pump
- > Traversing ram with 300mm stroke
- > Supplied with 2 vee blocks



We also stock workshop presses in 40t and 100t capacities. *Visit levanta.com.au for details.*

JAGER JFL-13 4 post truck hoist

Heavy duty 13.6T capacity lift

This versatile, heavy duty 4 post lift is engineered to accommodate trucks and built to last with upgrades to safety, durability and productivity. With its generous 13.6T lifting capacity, this hard working truck lift makes light work out of your heavy lifting.

The JFL-13 series truck hoist features:

- > Self-chocking approach ramps in the rear
- > Single point latch release system
- > All hydraulics and mechanical lifting components concealed under runway
- > Internal airline connections
- > Includes jacking beam rails
- > Adjustable width between runways



JAGER JFL-250 4 post hoist

25T lifting capacity

A great backbone to any workshop, the JFL-250 is designed with a laundry list of key features, including extended runways to accommodate a wide variety of vehicle wheelbases, extra safety for your peace-of-mind and quality materials so you can be confident that your hoist is there for the long haul.

The JFL-250 series hoist features:

- > Electro-hydraulic lifting system operated over a special double piston cylinder
- > Platform locking system operated automatically by electromagnets
- > Hydraulic cylinder with control valve of lowering speed
- > Safety valve against overpressure of the hydraulic system
- > Automatic release of safety wedges by pushing DOWN button
- > International patent on safety and lifting system
- > No compressed air required to operate locks



JAGER®

PRODUCT OF SPAIN



p 1300 577 541
f 1300 677 643
e sales@levanta.com.au
w www.levanta.com.au

QLD Office 17 Canberra Street, Hemmant, QLD 4174
NSW Office 89 Gascoigne Street, Kingswood, NSW 2747
VIC Office 1 - 3 Normanby Ave, Sunshine West, VIC 3020
WA Office 67 Tacoma Circuit, Canning Vale, WA 6155
SA Office 6 Sheffield St, Woodville North, SA 5012

Queensland • New South Wales • Australian Capital Territory • Victoria • South Australia • Western Australia • Tasmania • Northern Territory

Photos and illustrations shown within Workshop Essentials product catalogue are for identification purposes only and are subject to manufactures changes or revisions.
Levanta is not responsible for printing errors or omissions found within this catalogue.