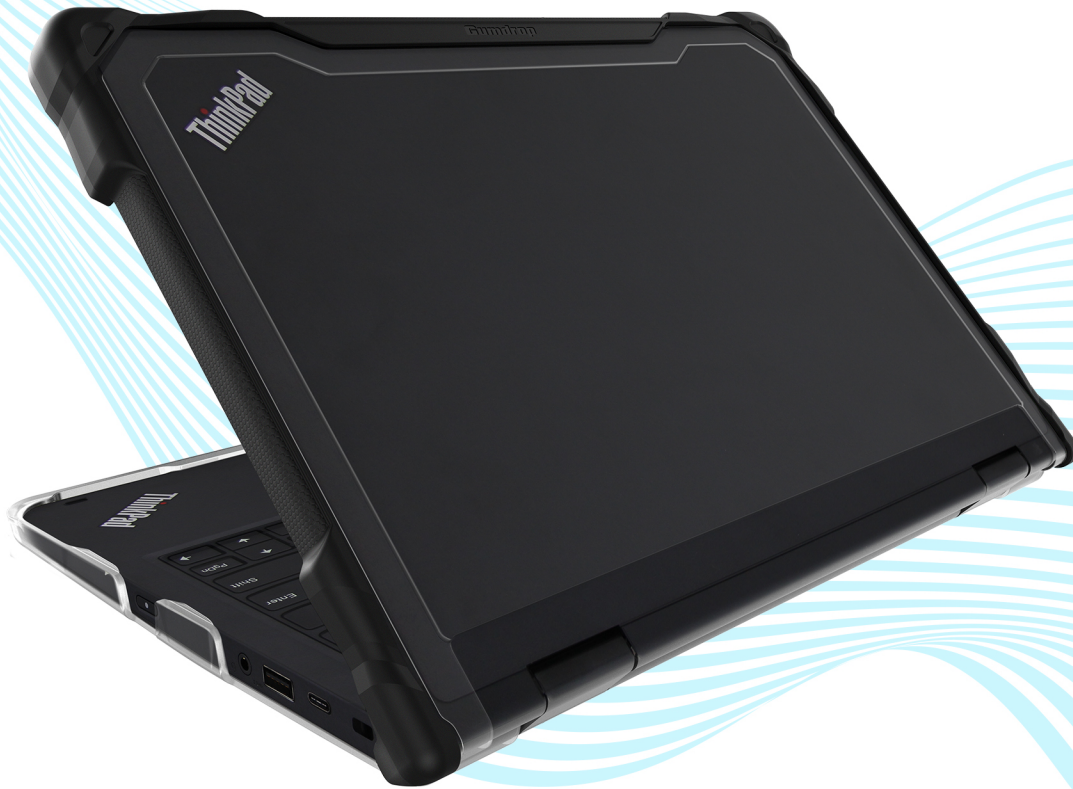




## SLIMTECH for Lenovo Yoga 11e (5th Gen, 2-in-1)



**UNIT PART #:** 06L000

### KEY FEATURES:

- 2-piece case construction
- Co-molded TPU bumpers on top shell for bump and scratch protection
- PC bottom shell for additional protection
- Easy clip on installation. No adhesive needed!
- Textured grip areas and frosted edges for additional protection from scuffs and scratches
- Clean design with transparent top and bottom for easy asset tagging and management
- Lightweight and charge cart optimized with a slim and smooth form factor
- Affordable price point
- Full functionality when moving from desktop to tablet mode

**SCAN FOR  
MORE INFO**



Ready to register a deal?  
Learn more about deal registration at:  
<https://www.gumdropcases.com/pages/deal-registration>

[www.gumdropcases.com](http://www.gumdropcases.com)  
Contact our sales department today!  
(206) 582-4981