

PAWS 5 Setup Instructions

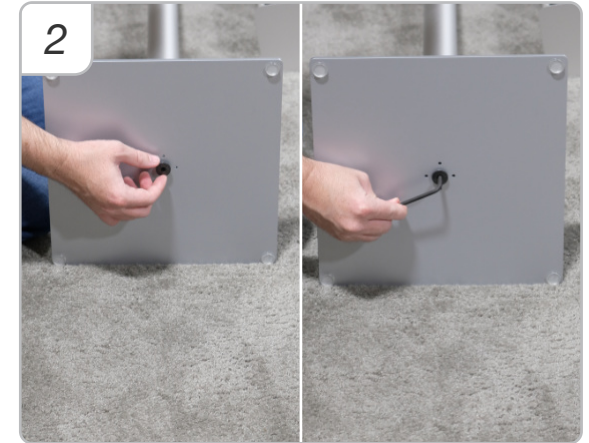


Components

- 48" Tube
- 12x12" Steel Base
- Dispenser with drip plate
- 12x12" Sign (Optional)
- M10 Bolt
- Metric #6 Hex Wrench



Remove bolt from end of pole



Thread bolt through foot into bottom of pole, tighten with wrench



Stand the pole up



Attach the Dispenser
(and graphic if applicable)



Need Help?
Call (866) 206-9405