



GOOSE EYE XL ICON
DESIGN GUNILLA
LAGERHEM ULLBERG

KASTHALL

PRODUCT SPECIFICATIONS FOR GOOSE EYE XL ICON

When Gunilla Lagerhem Ullberg was developing the next addition to the Häggå family, she got her inspiration from ethnic fashion fabrics and costumes. Now our most popular pattern is updated with a new, modern and confident expression. With an enlarged goose eye and five exciting colour combinations, carefully composed to create the perfect conditions for another modern classic.

PRODUCT TYPE: Woven rug in pure wool

WEFT MATERIAL: 100% wool

WARP MATERIAL: 100% linen

TOTAL HEIGHT: approx. 5 mm

TOTAL WEIGHT: approx. 2200 g/m²

SIZE: Custom made sizes, width 70-600 cm upon request.

Or choose amongst our suggested sizes: 85x240 cm, 135x200 cm, 160x240 cm, 195x300 cm, 240x350 cm, 290x400 cm, 340x450 cm. For other colours, see Häggå collection. Also suitable as an exclusive wall-to-wall carpet.



Wear classification:
(EN 1307) Class 33
Commercial Heavy



Luxury rating:
(EN 1307) LCI



Suitable for Castor chair
only with additional backing:
Occasional use (EN 1307)



Acoustics:
 α_w E, ΔL_w 8B



Fire classification:
(EN 13501-1) Cfl-s1



CE system 3 (EN 14041)

Meets the requirements for Green Label Plus



SUSTAINABILITY AT KASTHALL

Sustainability is rooted in Kasthall's history. It was there when we started and continues today in our work and ambition to contribute to a sustainable future. It is evident in our circular approach to design and in a fully-traceable supply chain to reduce our impact on people and planet. It is part of our commitment to local Swedish production and a made-to-order system that creates less waste. We also use third-party environmental declarations and assessment to ensure reliability. Read more about our sustainability work and philosophy at kasthall.com.

CARE ADVICE WOVEN RUGS

To further extend the lifetime of your rug, Kasthall recommends a regular maintenance so that the rug may retain its shape and appearance. If you have a light, single-colour rug you will need to care for it more often than a darker, patterned rug. It is also a good idea to use a rug underlay to prolong the life of your woven rug and prevent it from slipping on any type of floor. Thorough vacuuming is the best, most economical and environmentally friendly method of cleaning. Beating or shaking a rug may damage the fibers. It is most efficient to vacuum the rug one direction at a time.

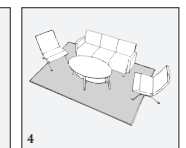
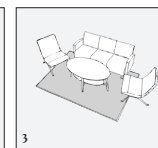
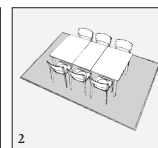
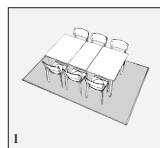
CLEANING ADVICE

We recommend that the rug is cleaned by a professional cleaner, using the extraction method on a flat surface. The quantity and temperature of the water will depend on the material. Good ventilation during the drying process is essential. Shrinkage will be about 3-5%. Kasthall's rugs are not to be machine-washed or dry-cleaned. At www.kasthall.com you can read more about our materials, how to look after your rug and our stain guide.

CHOOSING A RUG

Choose the characteristics of the rug, its colour and design to suit the space in which it will be laid. If it is to be laid in a hall, for example, you may choose a type of rug that is more resistant to wear, and a colour that is a little darker and dirt-tolerant. Use a rug as a means of bringing together the rest of the interior. Decide whether you want to place a sofa on the rug or at its edge. If a rug is to be placed underneath a dining table, add at least 60 cm all round the table to allow space for pulling out the chairs.

Woven rugs are suitable for most settings, both public and private. Ideal for use in domestic settings such as dining rooms, halls and kitchens, and in retail environments, conference premises and corridors. May also be laid as a carpet.



Examples of commonly used rug sizes:

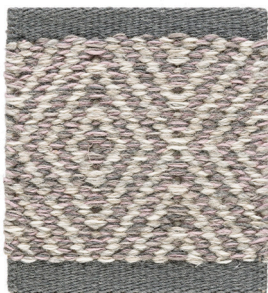
1. Dining table with 6 chairs: rug size 200x300 cm
2. Dining table with 6 chairs: rug size 250x350 cm
3. Three-seat sofa with armchairs: rug size 170x240 cm
4. Three-seat sofa with armchairs: rug size 200x300 cm

OTHER INFORMATION

- Depending on the materials used and the rug-making process, dimensions may vary by up to 5% so please state maximum or minimum dimensions when placing your order.
- Note that all rugs from Kasthall are made from natural materials. Variations in colour and texture can therefore arise between batches of yarn and dye baths.
- Rugs should be laid on an underlay that prevents them from moving on all types of flooring. This extends the life of the rug and reduces the risk of slipping.
- The use of backing fixes the dimensions of a rug and extends its life. This is recommended for rugs that are wider than 200 cm and/or those larger than six sqm.

GOOSE EYE XL ICON

Design GUNILLA LAGERHEM ULLBERG
Woven rug in pure wool



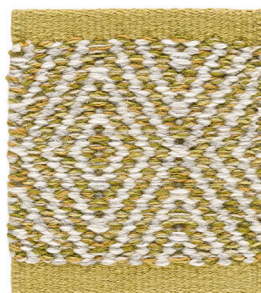
Rose Quarts 680



Stone Grey 580



Misty Blue 230



Straw 480



Denim Blue 220



Rug 170 x 240 cm, Rose Quarts 680



Rug 170 x 240 cm, Misty Blue 230

Showrooms in MILAN | NEW YORK | STOCKHOLM | GOTHENBURG

KASTHALL HQ SWEDEN

Phone +46 320 20 59 00, Fax +46 320 20 59 01
Fritslavägen 42, Box 254, SE-511 23 Kinna, Sweden
info@kasthall.se

For the latest updates of our collection, please visit www.kasthall.com

All the designs shown here are protected under law. Kasthall have the property rights and distribution rights worldwide. Copying will be prosecuted.

