

# M A V E N



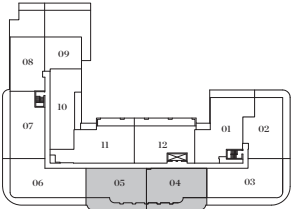
Features & Décor Guide



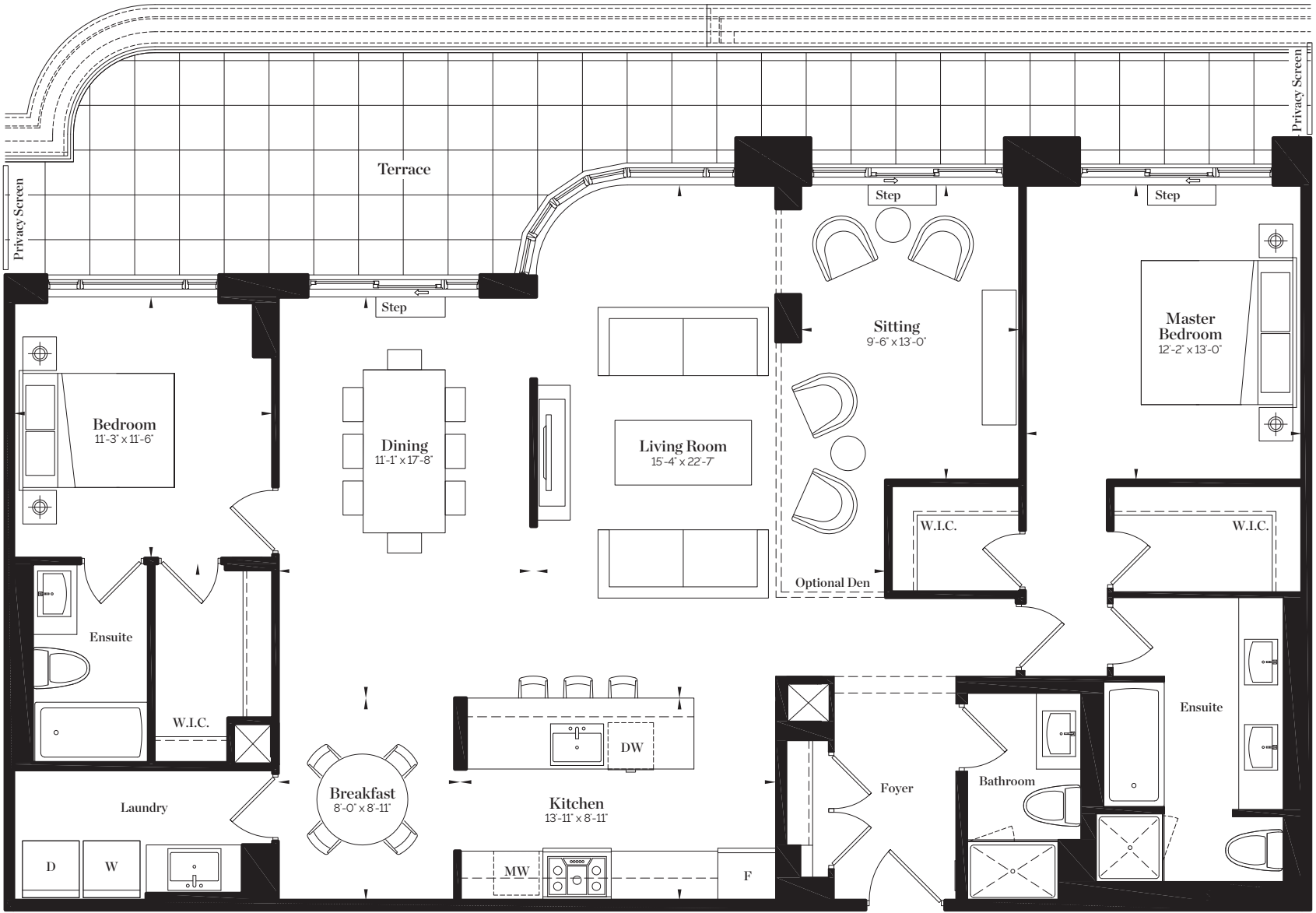
# Maven Model Suite

1700 Avenue Road, Toronto

Suite 305 "The Greer" | 2 Bed | 2.5 Bath | 1,773 sq.ft.



3<sup>rd</sup> Floor



Sizes and specifications are subject to change without notice. Actual usable space may vary from any stated floor area. All dimensions are approximate and are subject to normal construction variances. Measurements of rooms set forth on any floor plan may be taken at the widest points of each given room (as if the room were a perfect rectangle), without regard for any cutouts or cabinetry. Floor measurements were calculated on the middle floor of typical floor plates. Balcony, terrace and column locations may vary as per elevation feature. Furniture and accessories are not included and are shown only as display. Please see a sales representative for availability and details. January 2021. E.&O.E



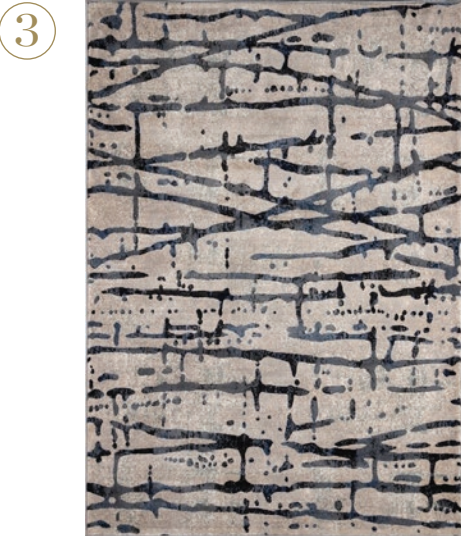
# The Living Room

## Features & Décor



### Décor

1. Ribbed Velvet Sofa in Grey | 2. Two-Tiered Coffee Table in White & Gold | 3. Abstract Area Rug in Blue & White | 4. Traditional Armchair with Bronze Steel Frame | 5. Textured Artwork by Ksenia Sizaya



### Features

- A EverWood Designer Flooring - Cable Bay
- B Motorized Blinds\*
- C Shaker Style Lincoln Park Doors\*

\*Upgraded feature



# The Kitchen

## Features & Décor



### Décor

1. Open-Back Counter Stool in Grey & Black | 2. Cone Pendant in Black

①



②



### Features

Ⓐ Symphony Grey Backsplash

Ⓑ Symphony Grey Caesarstone Counter Top

Ⓒ Tuscan White Shaker Cabinets With Hardware

Ⓓ Undermount Stainless Steel Sink

Ⓔ 36" Wolf Gas Range

Ⓕ 36" Sub-Zero Refrigerator

# The Master Bedroom

## Features & Décor



### Décor

- 1. Upholstered Bed with Rubberwood Frame in Grey | 2. Transitional Armchair with Piping in Espresso
- 3. Linen Flush Mount with Wood Detail | 4. Abstract Area Rug in Blue



### Features

- A EverWood Designer Flooring - Cable Bay
- B Motorized Blinds\*
- C Custom Wall Millwork - Metrie\*\*

\*Upgraded feature \*\*Not offered by Empire



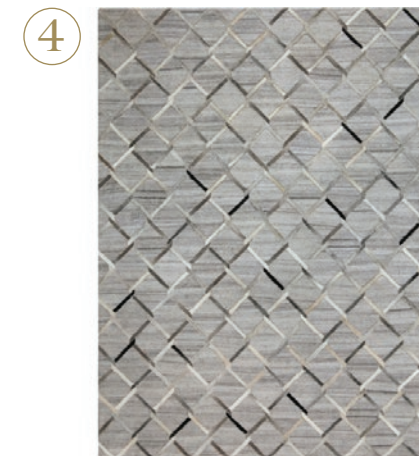
# The Home Office

## Features & Décor



## Décor

1. Wood & Metal Writing Desk | 2. Modern Swivel Chair in Black & Brass | 3. Steel Bookcase | 4. Interlocking Trellis Rug in Grey



## Features

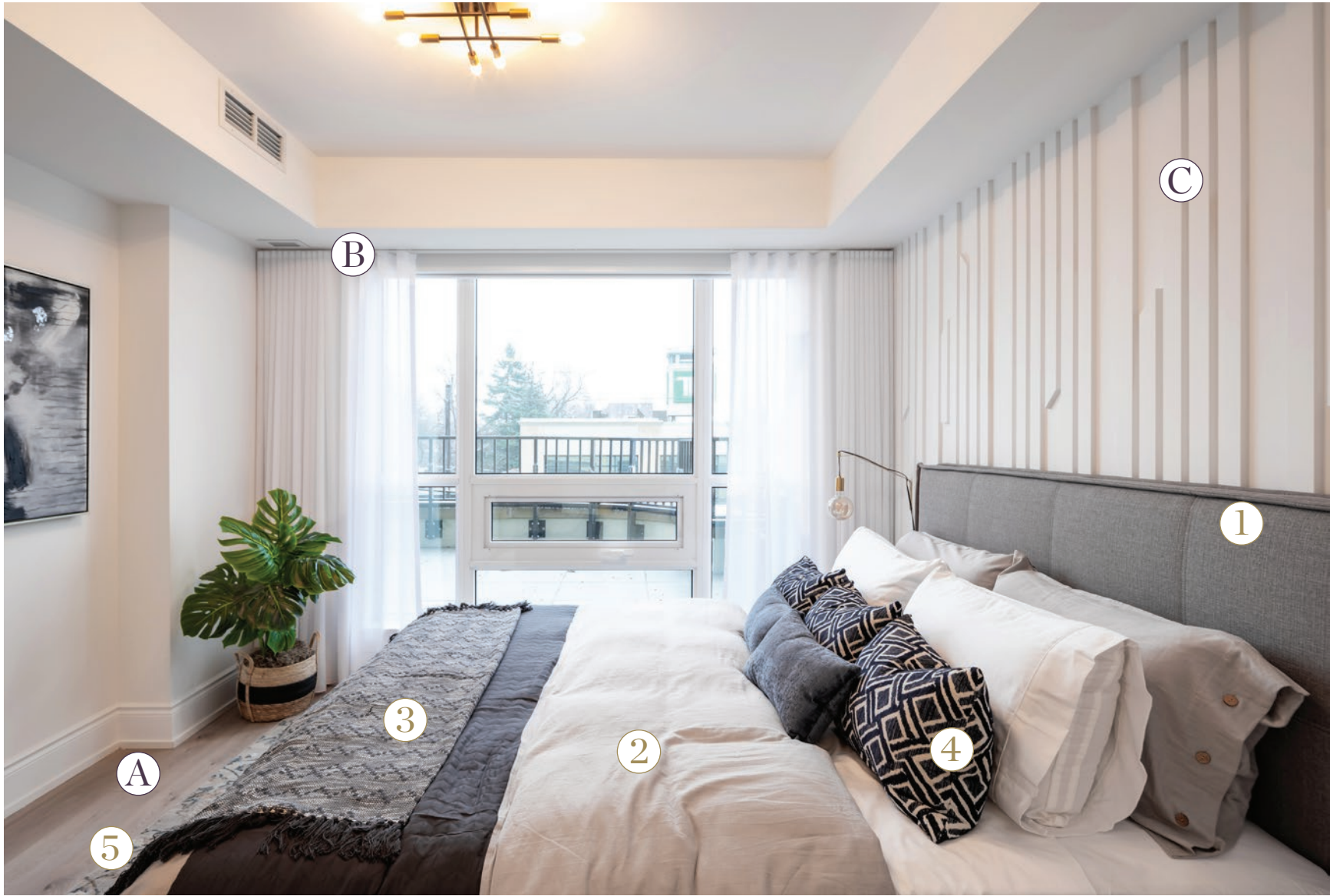
- Ⓐ EverWood Designer Flooring - Cable Bay
- Ⓑ Motorized Blinds\*

\*Upgraded feature



# The Guest Bedroom

## Features & Décor



## Décor

1. Linen Waterfall Frame with Board Footboard | 2. Organic Cotton Bedsheets in Grey | 3. Turkish Throw Blankets in Blue & Grey | 4. Graphic Lumbar Pillow in Graphite & Cream | 5. Abstract Area Rug in Grey



## Features

- A EverWood Designer Flooring - Cable Bay
- B Motorized Blinds\*
- C Custom Wall Millwork - Metrie\*\*

\*Upgraded feature \*\*Not offered by Empire



# Master Ensuite



## Features

- A** Calacatta Grey Matte Porcelain Floor Tile - 12" x 24"
- B** Calacatta Grey Matte Mosaic Shower Floor Tile - 2" x 2"
- C** Calacatta Grey Matte Porcelain Tub Surround Tile - 12" x 24"
- D** Chelsea Grey Matte Cabinets
- E** Symphony Grey Caesarstone Counter Top
- F** Collette Undermount Sink

# Guest Ensuite



## Features

- A** Calacatta Grey Matte Porcelain Floor Tile - 12" x 24"
- B** Calacatta Grey Matte Porcelain Tub Surround Tile - 12" x 24"
- C** Symphony Grey Caesarstone Counter Top
- D** Revere Grey Tuscan Matte Cabinets
- E** Collette Undermount Sink



# Laundry Room



## Features

- A** White Porcelain Floor Tile - 12" x 24"
- C** Laundry Blizzard Caesarstone Counter Top
- B** White Matte Finish Cabinets
- D** Top Mount Stainless Sink



The Developer reserves the right to make changes to the features and finishes, building and floor plan without notice, as deemed necessary. The features listed in this guide are specific to unit 305 at Empire Maven. Please see a sales and/or decor representative for details. January 2021. E.&O.E.



**E**  
**EMPIRE MAVEN**