



# Pole Inspection & Treatment

## POLE MAINTENANCE

Preventive maintenance is designed to retain the strength and durability that you build into your pole plant. Pole inspection and remedial treatment save you money by adding many additional years of durable service life and reducing unnecessary replacement costs.

Osmose crafts programs that allow pole owners to improve long-term pole performance by managing strength, load, and cost.

- ✓ Improved system safety and reliability/resiliency
- ✓ Decades of additional service life
- ✓ Reduced replacement costs

### **An Effective Pole Maintenance Program is Environmentally Responsible and Financially Beneficial**

Consumers and regulators expect increasingly high levels of reliability with infrequent and short service outages. These groups also expect utilities to take a proactive role in protecting the environment. Osmose pole maintenance solutions help you maintain the strength and resiliency of your networks while reducing consumption of timber, treatment chemicals, and other resources used to manufacture poles.

### **Inspection Options**

Osmose will help you match the age, decay risk zone, and species of your pole plant to develop the right program for your system.



# UNDERSTANDING THE POLE INSPECTION PROCESS

The keys to successful pole inspection are accurately identifying decay, measuring defects, and estimating the percent remaining strength to correctly identify poles that should be treated, restored, or replaced. Osmose inspectors are full-time professionals with best-in-class training, local supervision, and access to proprietary tools that increase the precision of pass/fail calculations.

- ✓ **StrengthCalc®** software precisely calculates the remaining strength of in-service wood poles in real time and provides the most accurate pass/fail decisions.
- ✓ **LoadCalc®** software (used in conjunction with StrengthCalc software) helps reduce pole replacements by identifying poles that are less than fully loaded and adjusting the strength requirements accordingly.

## REMEDIAL TREATMENTS

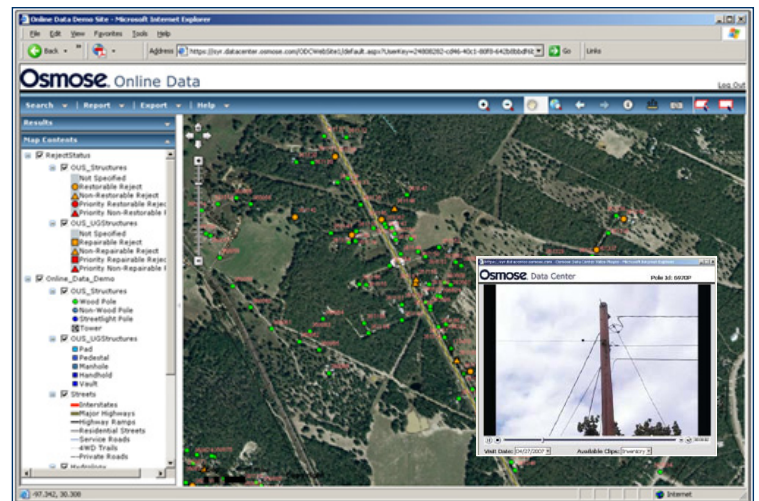
As the world's leading developer of wood preservatives designed for in-service poles, Osmose has established R&D priorities intended to maximize efficacy against decay and deterioration while optimizing the level of active ingredients, lowering the potential risk to non-target organisms. In addition to being environmentally preferable, Osmose preservatives and coatings increase the service life of in-service utility structures.

- ✓ **MP500-EXT®** preservative paste delivers broad-spectrum, long-lasting control of wood-destroying fungi with an improved environmental profile when compared to other preservative pastes. Its unique formulation provides robust preservative protection while utilizing technology that is responsive to today's regulatory, safety, and environmental concerns.
- ✓ **MITC-FUME®** solid-melt fumigant is 97% mitc in pre-packaged individual doses to quickly deliver broad-spectrum control.
- ✓ **DuraFume® II** bulk powder/granular dazomet-based fumigant decomposes to produce mitc.

## DATA MANAGEMENT & DELIVERY

Reporting, record-sharing, and documentation of inspections are critical to successful maintenance programs. Osmose provides geospatial data management tools that allow your program manager to perform queries, develop reports, and efficiently plan and map follow-up repairs and replacements.

- ✓ Secure 24-hour online access to data
- ✓ User-friendly map interface for viewing pole locations with attributes and digital images
- ✓ Search and reporting options allow users to easily query and export data



Contact your local Osmose representative or:

**CALL** 716.319.3423 | **EMAIL** [poleinfo@osmose.com](mailto:poleinfo@osmose.com)