



Above Ground Pole Repair Systems

The above-ground portion of poles is susceptible to damage by a variety of agents including woodpeckers, gunshots, trimmers, mowers, and lightening strikes. Osmose offers several pole repair systems designed to help pole owners avoid unnecessary replacement costs, risks to public and worker safety, and the potential for avoidable outages. Osmose AquaWrap and OsmoWeld products are designed to repair:

- ✓ Pole top decay and splitting
- ✓ Damage caused by woodpeckers and other wildlife
- ✓ Mechanical damage caused by gunshots, trimmers, or mowers
- ✓ Burns that resulted in damage

OsmoWeld® **Two-Part Epoxy Repair**

OsmoWeld products are designed to repair damage caused by woodpeckers and split and decayed pole tops. The two-part epoxy formula flows easily, completely filling the hollow, which is vital in preventing the return behavior of woodpeckers.

AquaWrap™ **Water-Activated Fiberglass Repair**

Aquawrap is designed to help restore strength to damaged wood poles and can extend the useful life of wood poles for many years. The pre-impregnated fiberglass wrap provides the predictable strength of composite repair systems without the mess of mixing and applying resins. This water-activated fiberglass repair system can be used to repair large or clustered woodpecker holes, above-ground damage, pole top decay, or decayed or damaged crossarms and braces.



CA WARNING: Can expose you to Titanium Dioxide, a carcinogen. See www.P65Warnings.ca.gov.

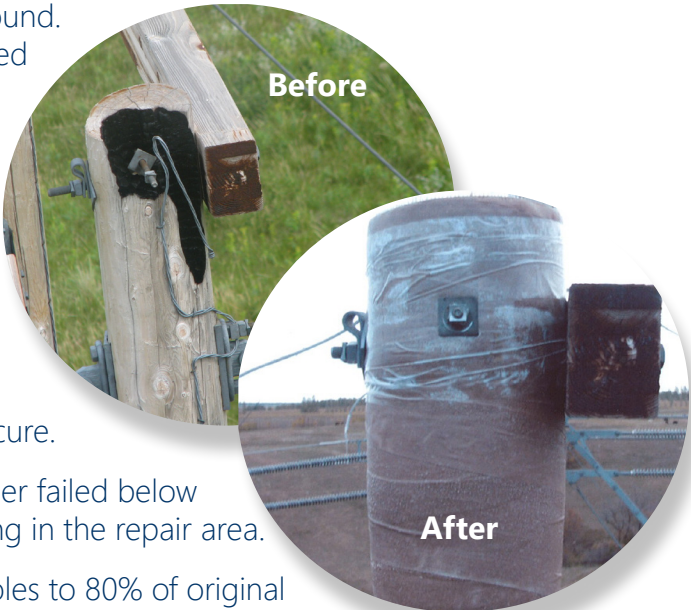
The pole pictured right was damaged by current going to ground. OsmoWeld was used to fill the void, and Aquawrap was applied to restore the pole's shape. This hybrid repair restored the pole's strength and provided a strong, stable mating surface for the attachments.

Industry-Leading, Strength-Tested Products

Osmose products are thoroughly tested to ensure proper performance. Testing of these products includes simulating a woodpecker hole and a large nesting cavity in poles above ground. The damage is repaired and the repair is allowed to cure.

The poles are then tested to failure. In all cases, the poles either failed below the repair or exceeded the strength requirements before failing in the repair area.

Standard AquaWrap application recommendations restore poles to 80% of original strength. Application procedures can be adapted based on customer preferences or needs to restore poles to greater strength (with the use of additional AquaWrap). Osmose engineering support staff are available to provide assistance with repair design.



ORDERING INFORMATION

OsmoWeld® LV (low viscosity) is available in 600 mL cartridges and can be used with a manual or power dispenser. **OsmoWeld® MPF™** (multi-purpose filler) produces a milder exothermic reaction during curing than OsmoWeld LV, making MPF the ideal choice for larger voids. OsmoWeld MPF is available in 600 mL and 1500 mL cartridges and requires a power dispenser.

A 600 mL cartridge of OsmoWeld will fill approximately 36 cubic inches of void and 1500 mL cartridge will fill approximately 90 cubic inches of void.	
Item	Unit
OsmoWeld MPF 600 mL cartridges	Carton (6 cartridges and 3 mixing nozzles)
OsmoWeld MPF 1500 mL cartridges	Carton (6 cartridges and 3 mixing nozzles)
PowerPush® 7000 Power Dispenser	Each (includes AC charger and batteries)
OsmoWeld LV - 600 mL cartridges	Carton (6 cartridges)
Manual Dual-Chambered Caulking Gun	Each
Entry Way Tape - 3" X 300'	Roll
AquaWrap Underwrap - 8" X 50'	Roll
AquaWrap Outer Coverwrap - 10" X 25'	Roll

For more information on OsmoWeld and AquaWrap or to place an order:

CALL 770.632.6700 Opt. 3 | EMAIL products@osmose.com