

John Brown University TUG Retention Report Fall 2021



Prepared by Lynette Duncan
Director of Institutional Research & Assessment
October 26, 2021

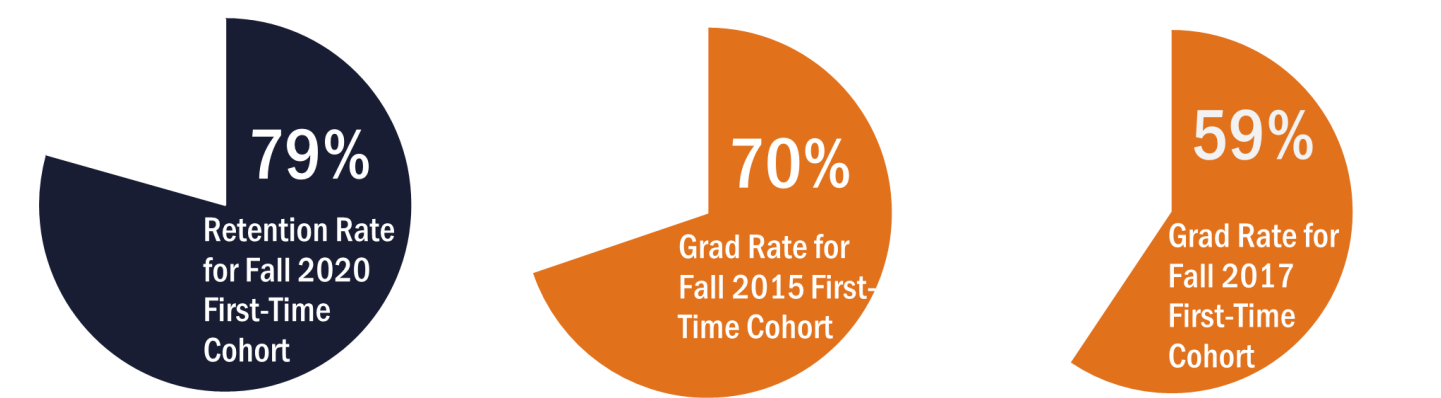
Introduction

Retention is a key issue facing John Brown University. In our Strategic Plan we have set a goal of a 70% graduation rate in the traditional undergraduate program. The first step to accomplishing this would be to have at least 82% of the freshman cohort retain to the second year. Since 2011, all cohorts except the 2014, 2017, and 2020 cohorts hit the 82% retention mark. Our latest 6-year graduation rate cohort, the 2015 cohort had a 70% graduation rate.

The purpose of this document is to show our retention and graduation rates for students with various characteristics. It is hoped that this data can help inform our intervention strategies with students to help improve their connection to JBU and, hence, their learning and persistence.

For each characteristic, there is a graph of the retention rate and a graph of the graduation rate. The primary purpose of the graphs is to visualize trends over time. Following each set of retention and graduation rate graphs is a data table with initial enrollment, number of students retained, percent of students retained, number of students graduated, and percent graduated.

2021 Results



Contents

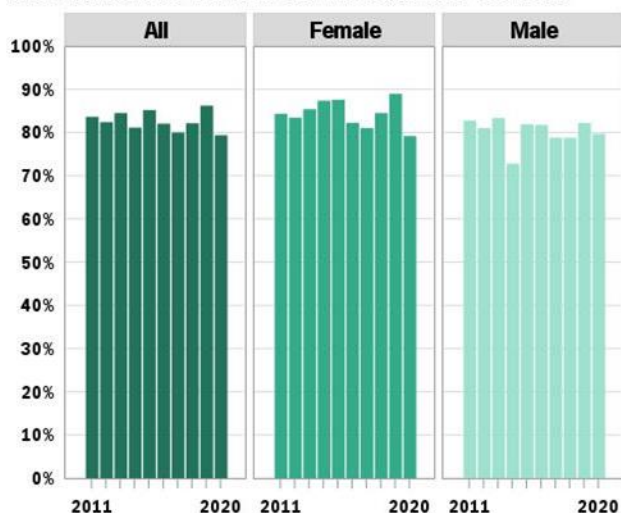
Introduction.....	2
2021 Results	2
Retention and Graduation Rates: Overall and by Gender.....	3
Retention and Graduation Rates by ACT & SAT Scores: Freshman Only	6
Retention and Graduation Rates by Application Date	19
Retention and Graduation Rates by Geography	23
Retention and Graduation Rates by Scholarship Amounts	30
Retention and Graduation Rates by Loan Amounts	36
Retention Rates by First-Year On-/Off-Campus Residence.....	42
Retention and Graduation Rates by Athletes	44
Retention and Graduation Rates by Pell Status: Freshman Only	47

Retention and Graduation Rates by Race/Ethnicity: Freshman Only	48
Retention and Graduation Rates by First-Gen Status: Freshman Only	51
Contact Information.....	52

Retention and Graduation Rates: Overall and by Gender

Note that the most recent 6-year graduation rate is from the 2015 cohort. The graphs show the 4-year and 5-year rates for the 2017 and 2016 cohorts, respectively. While transfer students are not included in the official retention and graduation rates, the number of transfer students makes a significant impact on enrollment.

Retention to 2nd Year: Freshman Cohort



Graduation Rate: Freshman Cohort

6-Year Rates for 2011-15 Cohorts; 5-year rate for 2016; 4-year rate for 2017

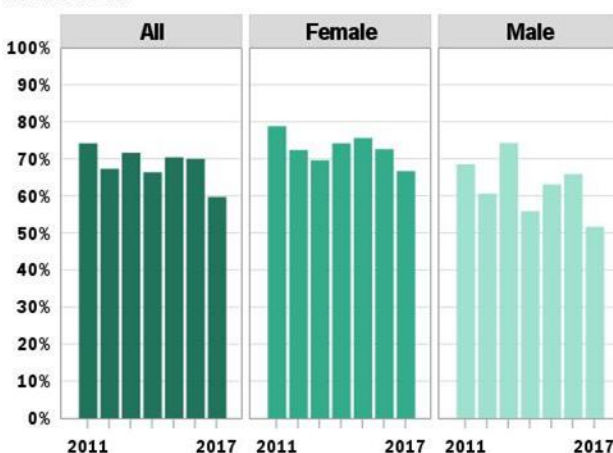
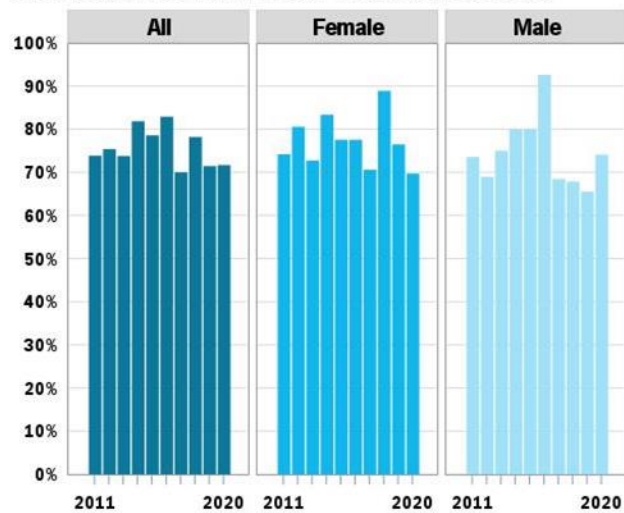


TABLE 1 FRESHMAN RETENTION AND GRADUATION RATES

New Freshmen						
			Retained to 2nd Year		Graduated	
Group	Entry Year	Initial Enrollment	#	%	#	%
All	2011	360	301	84%	267	74%
	2012	318	262	82%	214	67%
	2013	303	256	84%	217	72%
	2014	318	258	81%	211	66%
	2015	358	305	85%	252	70%
	2016	323	265	82%	226	70%
	2017	325	260	80%	194	60%
	2018	319	262	82%		
	2019	319	275	86%		
	2020	315	250	79%		
Female	2011	198	167	84%	156	79%
	2012	181	151	83%	131	72%
	2013	171	146	85%	119	70%
	2014	182	159	87%	135	74%

New Freshmen						
			Retained to 2nd Year		Graduated	
Group	Entry Year	Initial Enrollment	#	%	#	%
	2015	209	183	88%	158	76%
	2016	197	162	82%	143	73%
	2017	174	141	81%	116	67%
	2018	187	158	84%		
	2019	190	169	89%		
	2020	192	152	79%		
Male	2011	162	134	83%	111	69%
	2012	137	111	81%	83	61%
	2013	132	110	83%	98	74%
	2014	136	99	73%	76	56%
	2015	149	122	82%	94	63%
	2016	126	103	82%	83	66%
	2017	151	119	79%	78	52%
	2018	132	104	79%		
	2019	129	106	82%		
	2020	123	98	80%		

Retention to 2nd Year: Transfer Cohort



Graduation Rate: Transfer Cohort

6-Year Rates for 2011-15 Cohorts; 5-year rate for 2016; 4-year rate for 2017

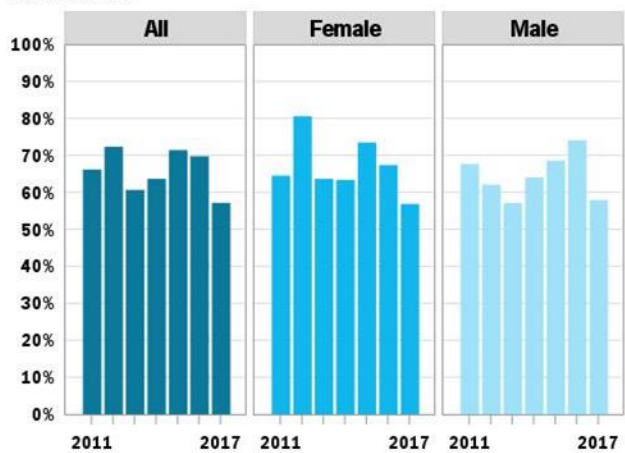


TABLE 2 TRANSFER RETENTION AND GRADUATION RATES

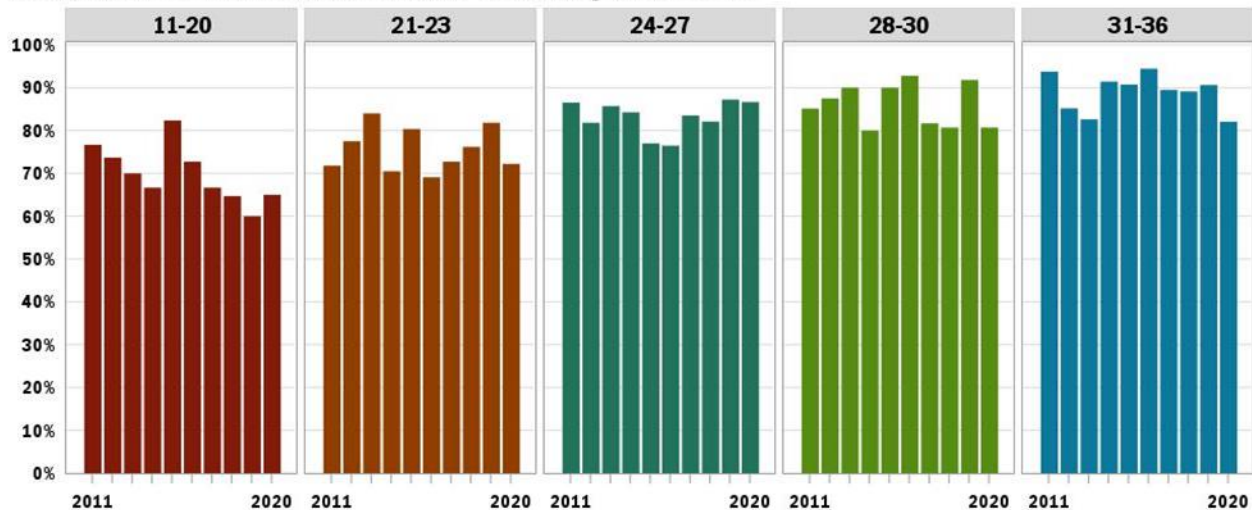
New Transfers						
			Retained to 2nd Year		Graduated	
Group	Entry Year	Initial Enrollment	#	%	#	%
All	2011	65	48	74%	43	66%
	2012	65	49	75%	47	72%
	2013	61	45	74%	37	61%
	2014	55	45	82%	35	64%

New Transfers						
			Retained to 2nd Year		Graduated	
Group	Entry Year	Initial Enrollment	#	%	#	%
	2015	84	66	79%	60	71%
	2016	76	63	83%	53	70%
	2017	70	49	70%	40	57%
	2018	55	43	78%		
	2019	63	45	71%		
	2020	60	43	72%		
Female	2011	31	23	74%	20	65%
	2012	36	29	81%	29	81%
	2013	33	24	73%	21	64%
	2014	30	25	83%	19	63%
	2015	49	38	78%	36	73%
	2016	49	38	78%	33	67%
	2017	51	36	71%	29	57%
	2018	27	24	89%		
	2019	34	26	76%		
	2020	33	23	70%		
Male	2011	34	25	74%	23	68%
	2012	29	20	69%	18	62%
	2013	28	21	75%	16	57%
	2014	25	20	80%	16	64%
	2015	35	28	80%	24	69%
	2016	27	25	93%	20	74%
	2017	19	13	68%	11	58%
	2018	28	19	68%		
	2019	29	19	66%		
	2020	27	20	74%		

Retention and Graduation Rates by ACT & SAT Scores: Freshman Only

We would expect greater retention for students with higher ACT and SAT scores, and the data bear that out. The data suggest that initiatives directed at students with low to mid scores (ACT 20-25 and SAT 900-1100) could help with retention. And the lowest scorers are much less likely to graduate even if they do continue for the second year.

Retention to 2nd Year: Freshman Cohort by ACT Score



Graduation Rate: Freshman Cohort by ACT Score

6-Year Rates for 2011-15 Cohorts; 5-year rate for 2016; 4-year rate for 2017

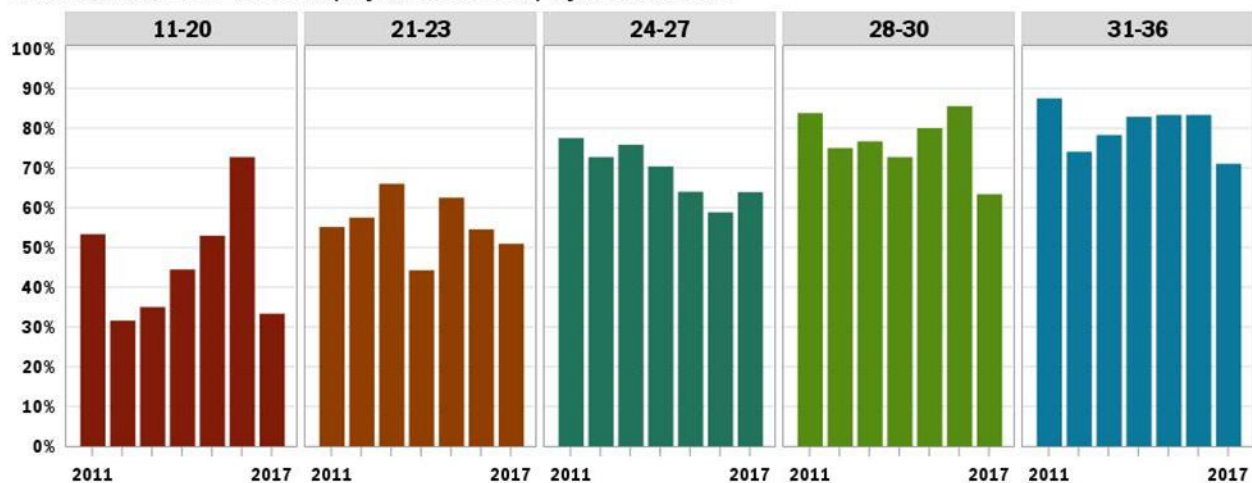


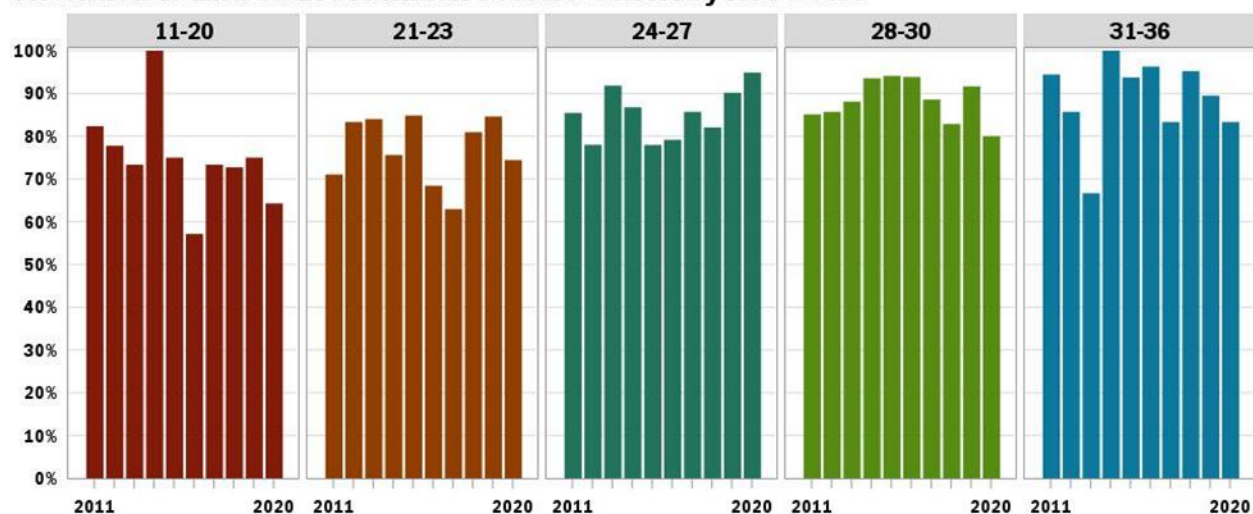
TABLE 3 FRESHMAN RETENTION AND GRADUATION RATES BY ACT SCORE

New Freshmen						
			Retained to 2nd Year		Graduated	
ACT Score Range	Entry Year	Initial Enrollment	#	%	#	%
11-20	2011	30	23	77%	16	53%
	2012	19	14	74%	6	32%
	2013	20	14	70%	7	35%

New Freshmen						
			Retained to 2nd Year		Graduated	
ACT Score Range	Entry Year	Initial Enrollment	#	%	#	%
	2014	9	6	67%	4	44%
	2015	17	14	82%	9	53%
	2016	11	8	73%	8	73%
	2017	24	16	67%	8	33%
	2018	17	11	65%		
	2019	15	9	60%		
	2020	20	13	65%		
21-23	2011	78	56	72%	43	55%
	2012	80	62	78%	46	58%
	2013	50	42	84%	33	66%
	2014	61	43	70%	27	44%
	2015	56	45	80%	35	63%
	2016	55	38	69%	30	55%
	2017	55	40	73%	28	51%
	2018	63	48	76%		
	2019	66	54	82%		
	2020	72	52	72%		
24-27	2011	89	77	87%	69	78%
	2012	77	63	82%	56	73%
	2013	91	78	86%	69	76%
	2014	108	91	84%	76	70%
	2015	100	77	77%	64	64%
	2016	85	65	76%	50	59%
	2017	97	81	84%	62	64%
	2018	67	55	82%		
	2019	94	82	87%		
	2020	60	52	87%		
28-30	2011	74	63	85%	62	84%
	2012	48	42	88%	36	75%
	2013	60	54	90%	46	77%
	2014	55	44	80%	40	73%
	2015	80	72	90%	64	80%
	2016	83	77	93%	71	86%
	2017	71	58	82%	45	63%
	2018	57	46	81%		
	2019	61	56	92%		
	2020	57	46	81%		
31-36	2011	32	30	94%	28	88%
	2012	27	23	85%	20	74%
	2013	23	19	83%	18	78%

New Freshmen						
			Retained to 2nd Year		Graduated	
ACT Score Range	Entry Year	Initial Enrollment	#	%	#	%
	2014	35	32	91%	29	83%
	2015	54	49	91%	45	83%
	2016	36	34	94%	30	83%
	2017	38	34	89%	27	71%
	2018	46	41	89%		
	2019	32	29	91%		
	2020	39	32	82%		

Retention to 2nd Year: Freshman Female Cohort by ACT Score



Graduation Rate: Freshman Female Cohort by ACT Score

6-Year Rates for 2011-15 Cohorts; 5-year rate for 2016; 4-year rate for 2017

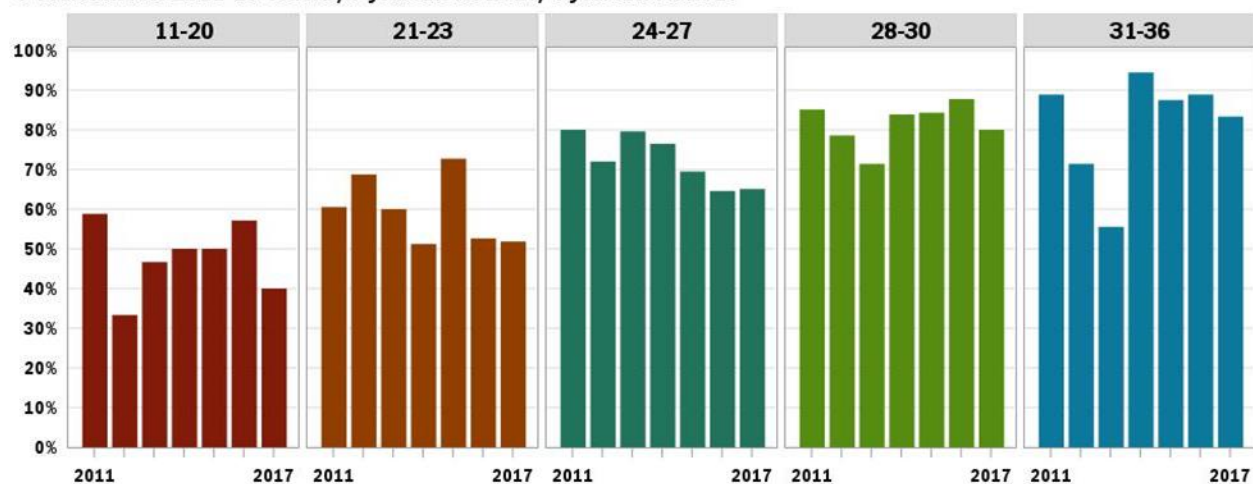
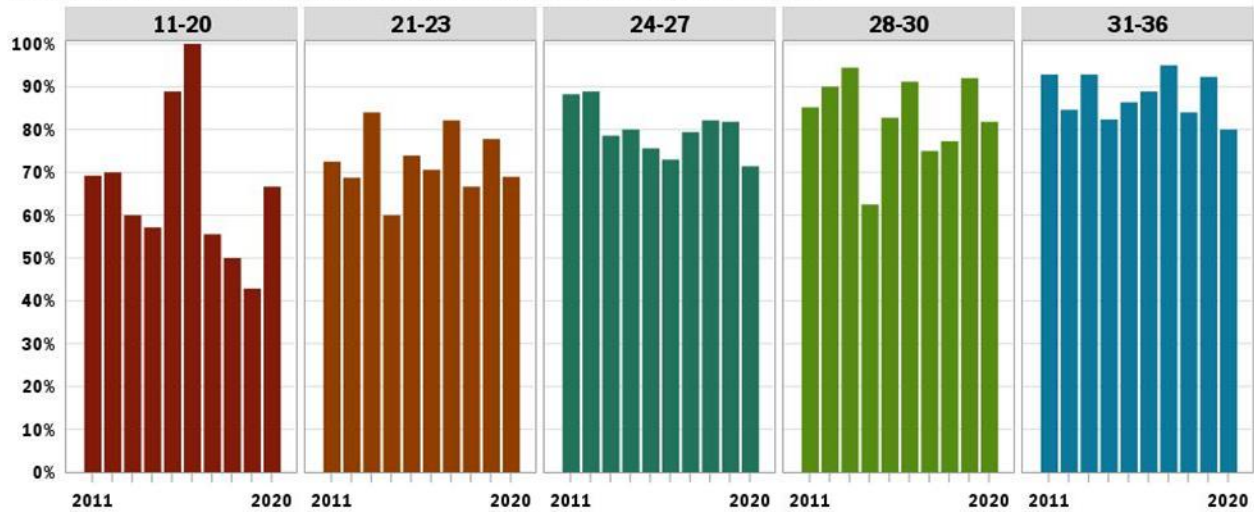


TABLE 4 FEMALE FRESHMAN RETENTION AND GRADUATION RATES BY ACT SCORE

New Freshmen						
			Retained to 2nd Year		Graduated	
ACT Score Range	Entry Year	Initial Enrollment	#	%	#	%
11-20	2011	17	14	82%	10	59%
	2012	9	7	78%	3	33%
	2013	15	11	73%	7	47%
	2014	2	2	100%	1	50%
	2015	8	6	75%	4	50%
	2016	7	4	57%	4	57%
	2017	15	11	73%	6	40%
	2018	11	8	73%		
	2019	8	6	75%		
	2020	14	9	64%		
21-23	2011	38	27	71%	23	61%
	2012	48	40	83%	33	69%
	2013	25	21	84%	15	60%
	2014	41	31	76%	21	51%
	2015	33	28	85%	24	73%
	2016	38	26	68%	20	53%
	2017	27	17	63%	14	52%
	2018	42	34	81%		
	2019	39	33	85%		
	2020	43	32	74%		
24-27	2011	55	47	85%	44	80%
	2012	50	39	78%	36	72%
	2013	49	45	92%	39	80%
	2014	68	59	87%	52	76%
	2015	59	46	78%	41	69%
	2016	48	38	79%	31	65%
	2017	63	54	86%	41	65%
	2018	39	32	82%		
	2019	61	55	90%		
	2020	39	37	95%		
28-30	2011	47	40	85%	40	85%
	2012	28	24	86%	22	79%
	2013	42	37	88%	30	71%
	2014	31	29	94%	26	84%
	2015	51	48	94%	43	84%
	2016	49	46	94%	43	88%
	2017	35	31	89%	28	80%
	2018	35	29	83%		
	2019	36	33	92%		
	2020	35	28	80%		

New Freshmen						
			Retained to 2nd Year		Graduated	
ACT Score Range	Entry Year	Initial Enrollment	#	%	#	%
31-36	2011	18	17	94%	16	89%
	2012	14	12	86%	10	71%
	2013	9	6	67%	5	56%
	2014	18	18	100%	17	94%
	2015	32	30	94%	28	88%
	2016	27	26	96%	24	89%
	2017	18	15	83%	15	83%
	2018	21	20	95%		
	2019	19	17	89%		
	2020	24	20	83%		

Retention to 2nd Year: Freshman Male Cohort by ACT Score



Graduation Rate: Freshman Male Cohort by ACT Score

6-Year Rates for 2011-15 Cohorts; 5-year rate for 2016; 4-year rate for 2017

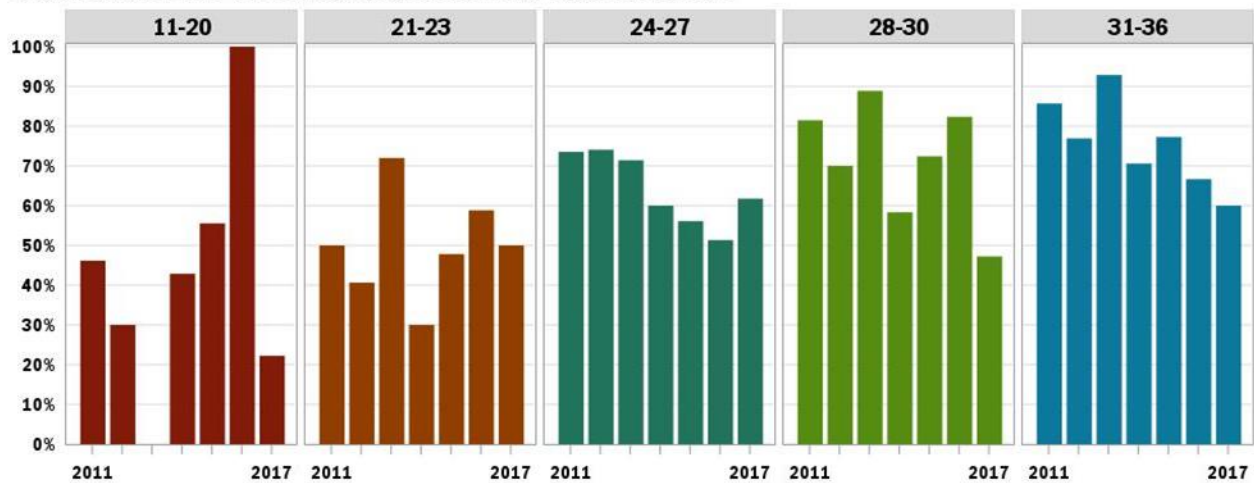
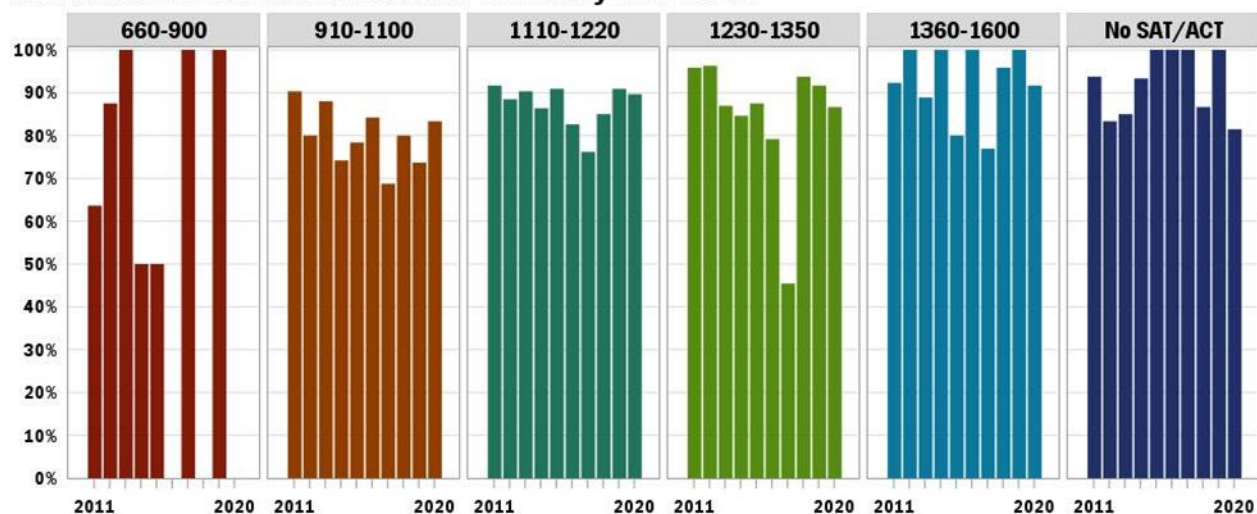


TABLE 5 MALE FRESHMAN RETENTION AND GRADUATION RATES BY ACT SCORE

New Freshmen						
			Retained to 2nd Year		Graduated	
ACT Score Range	Entry Year	Initial Enrollment	#	%	#	%
11-20	2011	13	9	69%	6	46%
	2012	10	7	70%	3	30%
	2013	5	3	60%	0	0%
	2014	7	4	57%	3	43%
	2015	9	8	89%	5	56%
	2016	4	4	100%	4	100%
	2017	9	5	56%	2	22%
	2018	6	3	50%		
	2019	7	3	43%		
	2020	6	4	67%		
21-23	2011	40	29	73%	20	50%
	2012	32	22	69%	13	41%
	2013	25	21	84%	18	72%
	2014	20	12	60%	6	30%
	2015	23	17	74%	11	48%
	2016	17	12	71%	10	59%
	2017	28	23	82%	14	50%
	2018	21	14	67%		
	2019	27	21	78%		
	2020	29	20	69%		
24-27	2011	34	30	88%	25	74%
	2012	27	24	89%	20	74%
	2013	42	33	79%	30	71%
	2014	40	32	80%	24	60%
	2015	41	31	76%	23	56%
	2016	37	27	73%	19	51%
	2017	34	27	79%	21	62%
	2018	28	23	82%		
	2019	33	27	82%		
	2020	21	15	71%		
28-30	2011	27	23	85%	22	81%
	2012	20	18	90%	14	70%
	2013	18	17	94%	16	89%
	2014	24	15	63%	14	58%
	2015	29	24	83%	21	72%
	2016	34	31	91%	28	82%
	2017	36	27	75%	17	47%
	2018	22	17	77%		
	2019	25	23	92%		
	2020	22	18	82%		

New Freshmen						
			Retained to 2nd Year		Graduated	
ACT Score Range	Entry Year	Initial Enrollment	#	%	#	%
31-36	2011	14	13	93%	12	86%
	2012	13	11	85%	10	77%
	2013	14	13	93%	13	93%
	2014	17	14	82%	12	71%
	2015	22	19	86%	17	77%
	2016	9	8	89%	6	67%
	2017	20	19	95%	12	60%
	2018	25	21	84%		
	2019	13	12	92%		
	2020	15	12	80%		

Retention to 2nd Year: Freshman Cohort by SAT Score



Graduation Rate: Freshman Cohort by SAT Score

6-Year Rates for 2011-15 Cohorts; 5-year rate for 2016; 4-year rate for 2017

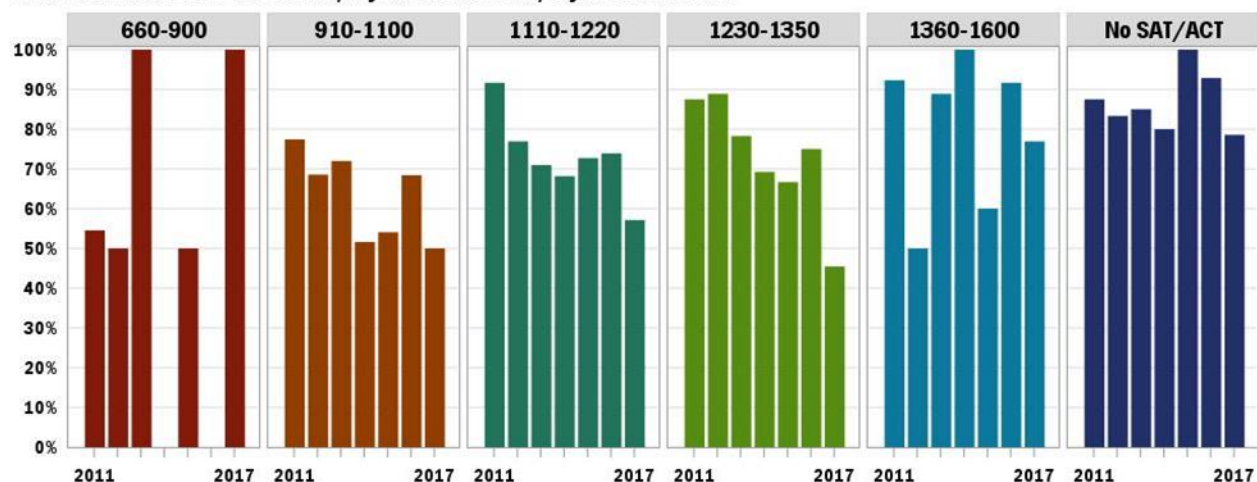
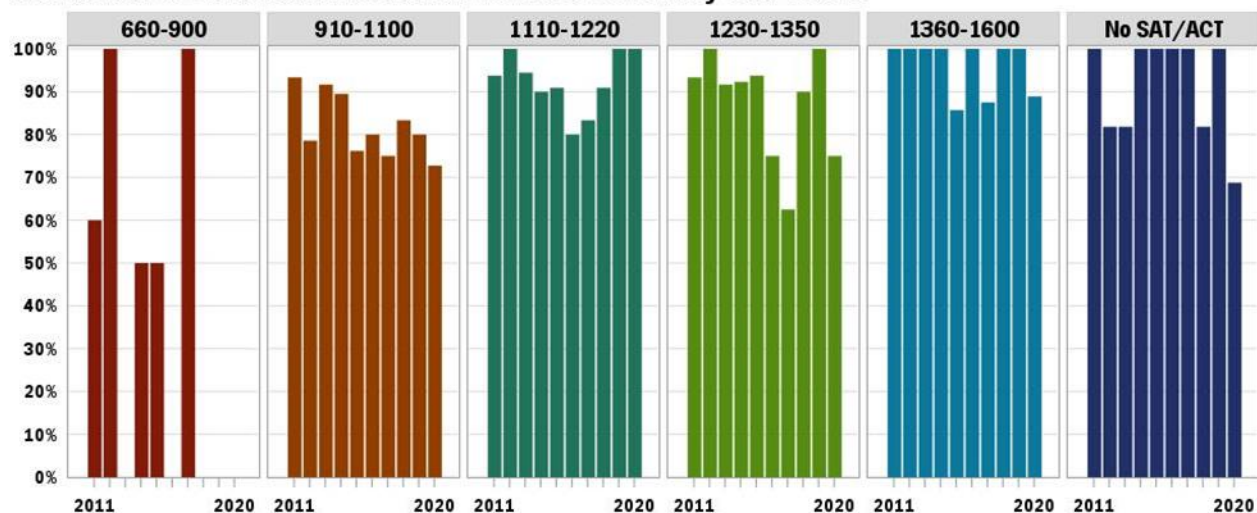


TABLE 6 FRESHMAN RETENTION AND GRADUATION RATES BY SAT SCORE

New Freshmen						
			Retained to 2nd Year		Graduated	
SAT Score Range	Entry Year	Initial Enrollment	#	%	#	%
660-900	2011	11	7	64%	6	55%
	2012	8	7	88%	4	50%
	2013	2	2	100%	2	100%
	2014	2	1	50%	0	0%
	2015	2	1	50%	1	50%
	2016	1	0	0%	0	0%
	2017	2	2	100%	2	100%
	2019	2	2	100%		
	2020	1	0	0%		
910-1100	2011	31	28	90%	24	77%
	2012	35	28	80%	24	69%
	2013	25	22	88%	18	72%
	2014	31	23	74%	16	52%
	2015	37	29	78%	20	54%
	2016	19	16	84%	13	68%
	2017	16	11	69%	8	50%
	2018	20	16	80%		
	2019	19	14	74%		
	2020	18	15	83%		
1110-1220	2011	24	22	92%	22	92%
	2012	26	23	88%	20	77%
	2013	31	28	90%	22	71%
	2014	22	19	86%	15	68%
	2015	22	20	91%	16	73%
	2016	23	19	83%	17	74%
	2017	21	16	76%	12	57%
	2018	20	17	85%		
	2019	22	20	91%		
	2020	29	26	90%		
1230-1350	2011	24	23	96%	21	88%
	2012	27	26	96%	24	89%
	2013	23	20	87%	18	78%
	2014	26	22	85%	18	69%
	2015	24	21	88%	16	67%
	2016	24	19	79%	18	75%
	2017	11	5	45%	5	45%
	2018	32	30	94%		
	2019	24	22	92%		
	2020	15	13	87%		
1360-1600	2011	13	12	92%	12	92%

New Freshmen						
			Retained to 2nd Year		Graduated	
SAT Score Range	Entry Year	Initial Enrollment	#	%	#	%
	2012	2	2	100%	1	50%
	2013	9	8	89%	8	89%
	2014	2	2	100%	2	100%
	2015	10	8	80%	6	60%
	2016	12	12	100%	11	92%
	2017	13	10	77%	10	77%
	2018	24	23	96%		
	2019	9	9	100%		
	2020	12	11	92%		
No SAT/ACT	2011	16	15	94%	14	88%
	2012	18	15	83%	15	83%
	2013	20	17	85%	17	85%
	2014	15	14	93%	12	80%
	2015	11	11	100%	11	100%
	2016	14	14	100%	13	93%
	2017	14	14	100%	11	79%
	2018	15	13	87%		
	2019	11	11	100%		
	2020	27	22	81%		

Retention to 2nd Year: Freshman Female Cohort by SAT Score



Graduation Rate: Freshman Female Cohort by SAT Score

6-Year Rates for 2011-15 Cohorts; 5-year rate for 2016; 4-year rate for 2017

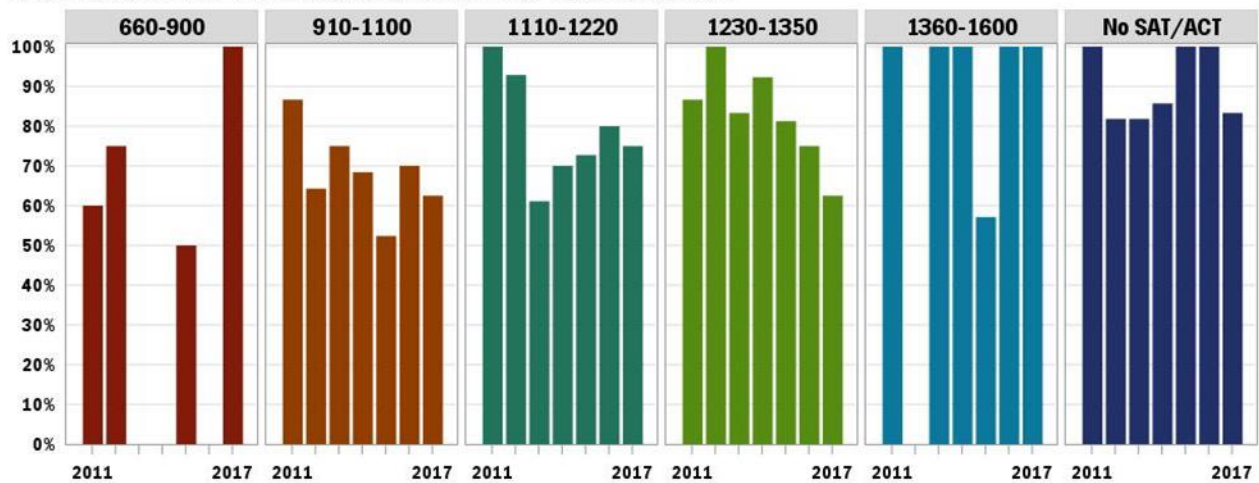
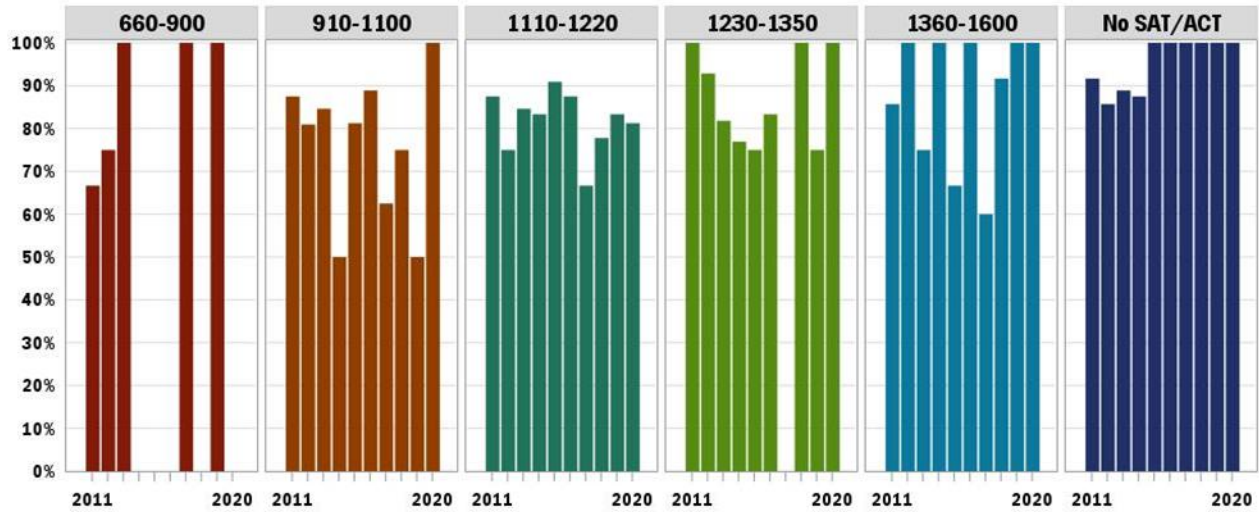


TABLE 7 FEMALE FRESHMAN RETENTION AND GRADUATION RATES BY SAT SCORE

New Freshmen						
			Retained to 2nd Year		Graduated	
SAT Score Range	Entry Year	Initial Enrollment	#	%	#	%
660-900	2011	5	3	60%	3	60%
	2012	4	4	100%	3	75%
	2014	2	1	50%	0	0%
	2015	2	1	50%	1	50%
	2016	1	0	0%	0	0%
	2017	1	1	100%	1	100%
	2020	1	0	0%		
910-1100	2011	15	14	93%	13	87%
	2012	14	11	79%	9	64%
	2013	12	11	92%	9	75%
	2014	19	17	89%	13	68%
	2015	21	16	76%	11	52%
	2016	10	8	80%	7	70%
	2017	8	6	75%	5	63%
	2018	12	10	83%		
	2019	15	12	80%		
	2020	11	8	73%		
1110-1220	2011	16	15	94%	16	100%
	2012	14	14	100%	13	93%
	2013	18	17	94%	11	61%
	2014	10	9	90%	7	70%
	2015	11	10	91%	8	73%
	2016	15	12	80%	12	80%
	2017	12	10	83%	9	75%
	2018	11	10	91%		

New Freshmen						
			Retained to 2nd Year		Graduated	
SAT Score Range	Entry Year	Initial Enrollment	#	%	#	%
	2019	10	10	100%		
	2020	13	13	100%		
1230-1350	2011	15	14	93%	13	87%
	2012	13	13	100%	13	100%
	2013	12	11	92%	10	83%
	2014	13	12	92%	12	92%
	2015	16	15	94%	13	81%
	2016	12	9	75%	9	75%
	2017	8	5	63%	5	63%
	2018	20	18	90%		
	2019	16	16	100%		
	2020	8	6	75%		
1360-1600	2011	6	6	100%	6	100%
	2012	1	1	100%	0	0%
	2013	5	5	100%	5	100%
	2014	1	1	100%	1	100%
	2015	7	6	86%	4	57%
	2016	7	7	100%	7	100%
	2017	8	7	88%	8	100%
	2018	12	12	100%		
	2019	6	6	100%		
	2020	9	8	89%		
No SAT/ACT	2011	4	4	100%	4	100%
	2012	11	9	82%	9	82%
	2013	11	9	82%	9	82%
	2014	7	7	100%	6	86%
	2015	6	6	100%	6	100%
	2016	7	7	100%	7	100%
	2017	6	6	100%	5	83%
	2018	11	9	82%		
	2019	4	4	100%		
	2020	16	11	69%		

Retention to 2nd Year: Freshman Male Cohort by SAT Score



Graduation Rate: Freshman Male Cohort by SAT Score

6-Year Rates for 2011-15 Cohorts; 5-year rate for 2016; 4-year rate for 2017

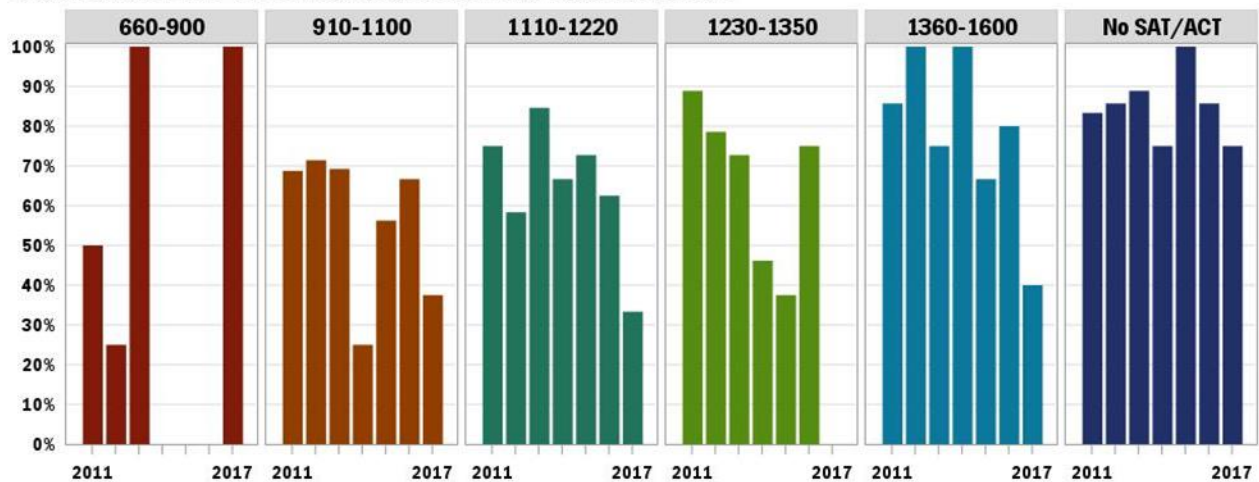


TABLE 8 MALE FRESHMAN RETENTION AND GRADUATION RATES BY SAT SCORE

New Freshmen						
			Retained to 2nd Year		Graduated	
SAT Score Range	Entry Year	Initial Enrollment	#	%	#	%
660-900	2011	6	4	67%	3	50%
	2012	4	3	75%	1	25%
	2013	2	2	100%	2	100%
	2017	1	1	100%	1	100%
	2019	2	2	100%		
910-1100	2011	16	14	88%	11	69%
	2012	21	17	81%	15	71%

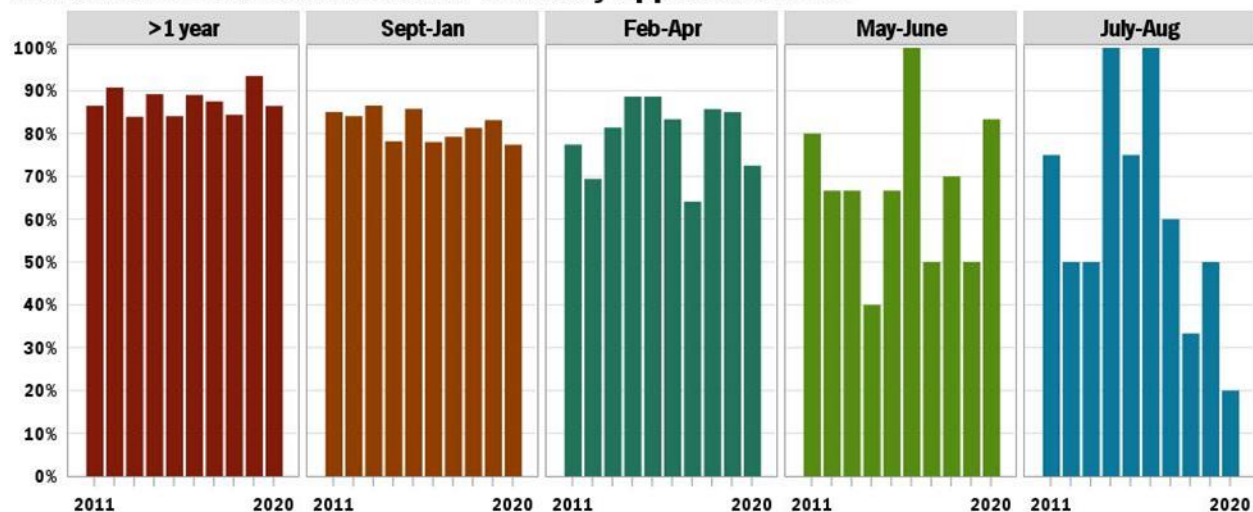
New Freshmen						
			Retained to 2nd Year		Graduated	
SAT Score Range	Entry Year	Initial Enrollment	#	%	#	%
	2013	13	11	85%	9	69%
	2014	12	6	50%	3	25%
	2015	16	13	81%	9	56%
	2016	9	8	89%	6	67%
	2017	8	5	63%	3	38%
	2018	8	6	75%		
	2019	4	2	50%		
	2020	7	7	100%		
1110-1220	2011	8	7	88%	6	75%
	2012	12	9	75%	7	58%
	2013	13	11	85%	11	85%
	2014	12	10	83%	8	67%
	2015	11	10	91%	8	73%
	2016	8	7	88%	5	63%
	2017	9	6	67%	3	33%
	2018	9	7	78%		
	2019	12	10	83%		
	2020	16	13	81%		
1230-1350	2011	9	9	100%	8	89%
	2012	14	13	93%	11	79%
	2013	11	9	82%	8	73%
	2014	13	10	77%	6	46%
	2015	8	6	75%	3	38%
	2016	12	10	83%	9	75%
	2017	3	0	0%	0	0%
	2018	12	12	100%		
	2019	8	6	75%		
	2020	7	7	100%		
1360-1600	2011	7	6	86%	6	86%
	2012	1	1	100%	1	100%
	2013	4	3	75%	3	75%
	2014	1	1	100%	1	100%
	2015	3	2	67%	2	67%
	2016	5	5	100%	4	80%
	2017	5	3	60%	2	40%
	2018	12	11	92%		
	2019	3	3	100%		
	2020	3	3	100%		
No SAT/ACT	2011	12	11	92%	10	83%
	2012	7	6	86%	6	86%

New Freshmen						
			Retained to 2nd Year		Graduated	
SAT Score Range	Entry Year	Initial Enrollment	#	%	#	%
	2013	9	8	89%	8	89%
	2014	8	7	88%	6	75%
	2015	5	5	100%	5	100%
	2016	7	7	100%	6	86%
	2017	8	8	100%	6	75%
	2018	4	4	100%		
	2019	7	7	100%		
	2020	11	11	100%		

Retention and Graduation Rates by Application Date

Students matriculating as first time freshman persist at a higher rate if they get into the application process early. This has become increasingly true also for transfer students. Graduation rates have not been consistent across categories and years

Retention to 2nd Year: Freshman Cohort by Application Date



Graduation Rate: Freshman Cohort by Application Date

6-Year Rates for 2011-15 Cohorts; 5-year rate for 2016; 4-year rate for 2017

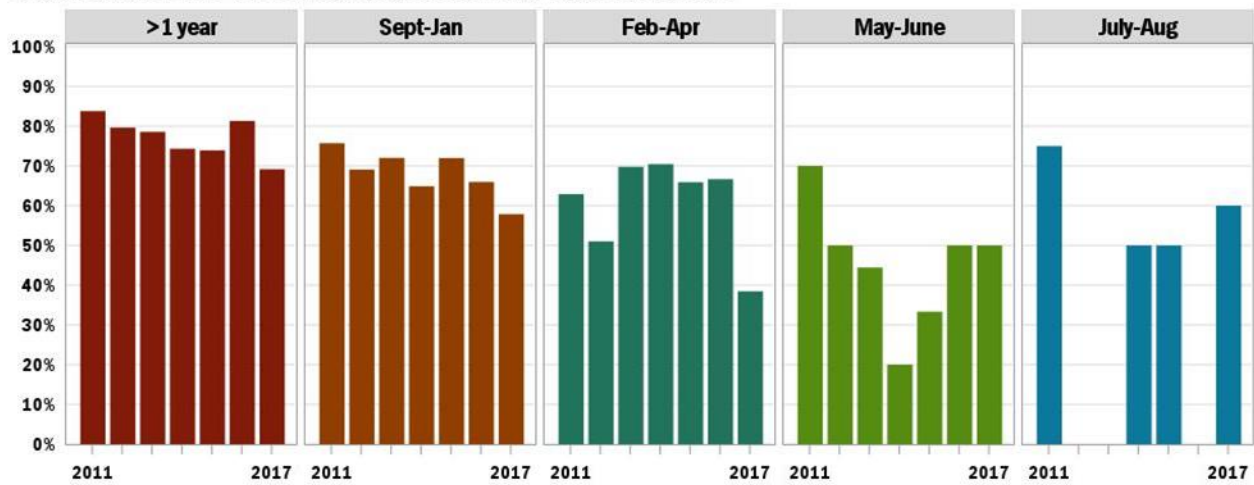
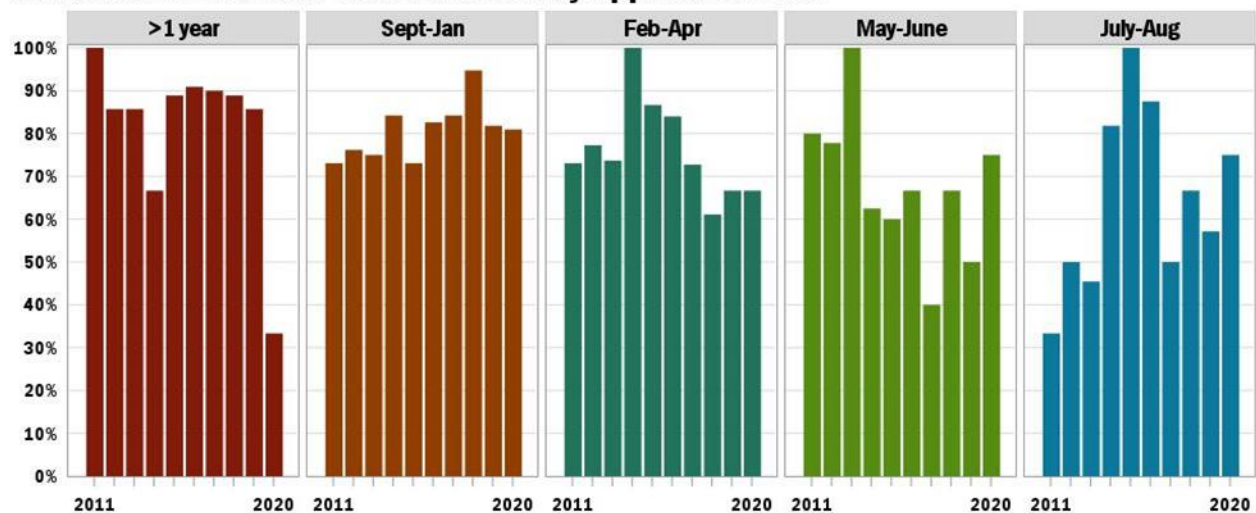


TABLE 9 FRESHMAN RETENTION AND GRADUATION RATES BY APPLICATION DATE

New Freshmen						
			Retained to 2nd Year		Graduated	
App Timing	Entry Year	Initial Enrollment	#	%	#	%
>1 year	2011	37	32	86%	31	84%
	2012	54	49	91%	43	80%
	2013	56	47	84%	44	79%
	2014	74	66	89%	55	74%
	2015	69	58	84%	51	74%
	2016	91	81	89%	74	81%
	2017	120	105	88%	83	69%
	2018	128	108	84%		
	2019	107	100	93%		
	2020	118	102	86%		
Sept-Jan	2011	247	210	85%	187	76%
	2012	207	174	84%	143	69%
	2013	193	167	87%	139	72%
	2014	188	147	78%	122	65%
	2015	232	199	86%	167	72%
	2016	191	149	78%	126	66%
	2017	159	126	79%	92	58%
	2018	150	122	81%		
	2019	166	138	83%		
	2020	146	113	77%		
Feb-Apr	2011	62	48	77%	39	63%
	2012	49	34	69%	25	51%
	2013	43	35	81%	30	70%
	2014	44	39	89%	31	70%
	2015	44	39	89%	29	66%

New Freshmen						
			Retained to 2nd Year		Graduated	
App Timing	Entry Year	Initial Enrollment	#	%	#	%
	2016	36	30	83%	24	67%
	2017	39	25	64%	15	38%
	2018	28	24	86%		
	2019	40	34	85%		
	2020	40	29	73%		
May-June	2011	10	8	80%	7	70%
	2012	6	4	67%	3	50%
	2013	9	6	67%	4	44%
	2014	10	4	40%	2	20%
	2015	9	6	67%	3	33%
	2016	4	4	100%	2	50%
	2017	2	1	50%	1	50%
	2018	10	7	70%		
	2019	4	2	50%		
	2020	6	5	83%		
July-Aug	2011	4	3	75%	3	75%
	2012	2	1	50%	0	0%
	2013	2	1	50%	0	0%
	2014	2	2	100%	1	50%
	2015	4	3	75%	2	50%
	2016	1	1	100%	0	0%
	2017	5	3	60%	3	60%
	2018	3	1	33%		
	2019	2	1	50%		
	2020	5	1	20%		

Retention to 2nd Year: Transfer Cohort by Application Date



Graduation Rate: Transfer Cohort by Application Date

6-Year Rates for 2011-15 Cohorts; 5-year rate for 2016; 4-year rate for 2017

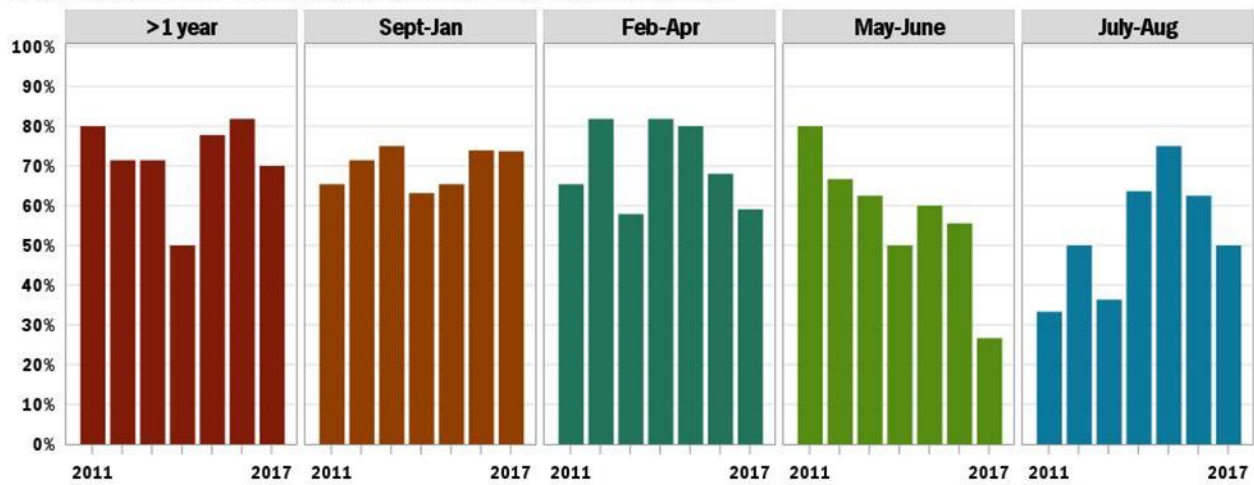


TABLE 10 TRANSFER RETENTION AND GRADUATION RATES BY APPLICATION DATE

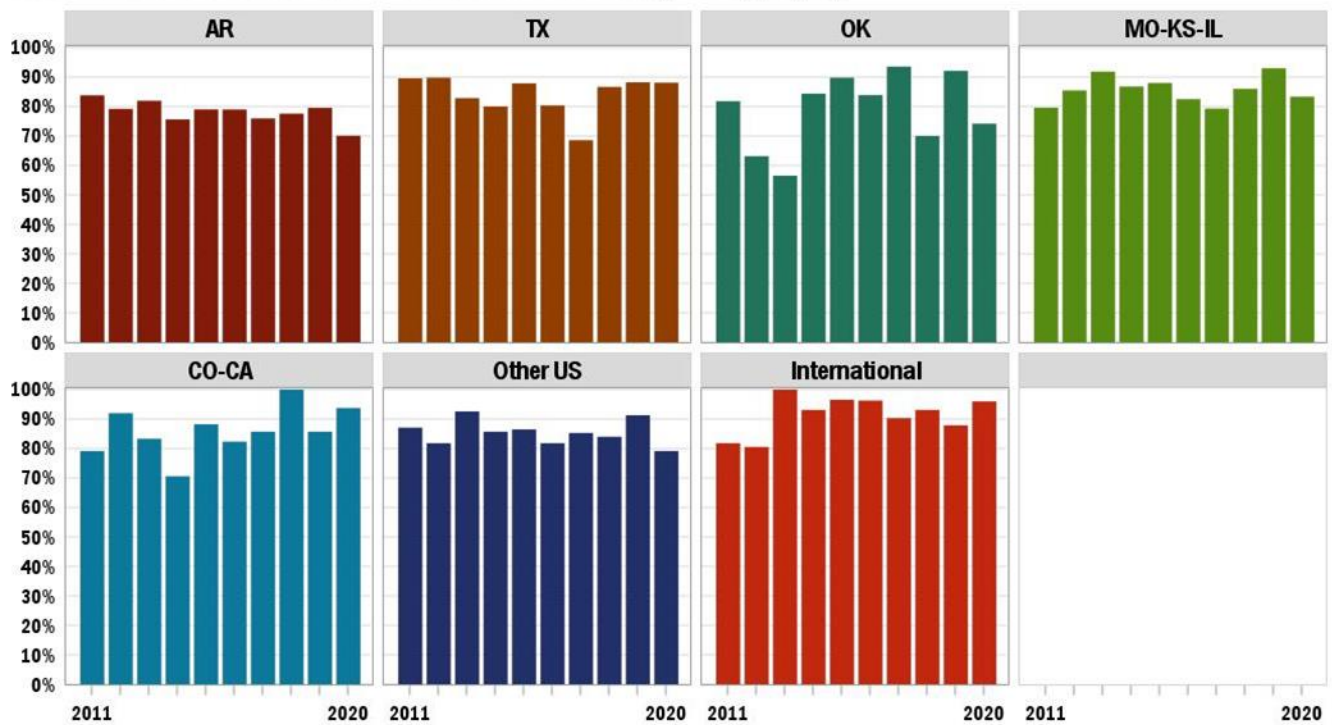
New Transfers						
			Retained to 2nd Year		Graduated	
App Timing	Entry Year	Initial Enrollment	#	%	#	%
>1 year	2011	5	5	100%	4	80%
	2012	7	6	86%	5	71%
	2013	7	6	86%	5	71%
	2014	6	4	67%	3	50%
	2015	9	8	89%	7	78%
	2016	11	10	91%	9	82%
	2017	10	9	90%	7	70%
	2018	9	8	89%		
	2019	7	6	86%		
	2020	3	1	33%		
Sept-Jan	2011	26	19	73%	17	65%
	2012	21	16	76%	15	71%
	2013	16	12	75%	12	75%
	2014	19	16	84%	12	63%
	2015	26	19	73%	17	65%
	2016	23	19	83%	17	74%
	2017	19	16	84%	14	74%
	2018	19	18	95%		
	2019	22	18	82%		
	2020	21	17	81%		
Feb-Apr	2011	26	19	73%	17	65%
	2012	22	17	77%	18	82%
	2013	19	14	74%	11	58%
	2014	11	11	100%	9	82%
	2015	30	26	87%	24	80%

New Transfers						
			Retained to 2nd Year		Graduated	
App Timing	Entry Year	Initial Enrollment	#	%	#	%
	2016	25	21	84%	17	68%
	2017	22	16	73%	13	59%
	2018	18	11	61%		
	2019	21	14	67%		
	2020	24	16	67%		
May-June	2011	5	4	80%	4	80%
	2012	9	7	78%	6	67%
	2013	8	8	100%	5	63%
	2014	8	5	63%	4	50%
	2015	15	9	60%	9	60%
	2016	9	6	67%	5	56%
	2017	15	6	40%	4	27%
	2018	6	4	67%		
	2019	6	3	50%		
	2020	8	6	75%		
July-Aug	2011	3	1	33%	1	33%
	2012	6	3	50%	3	50%
	2013	11	5	45%	4	36%
	2014	11	9	82%	7	64%
	2015	4	4	100%	3	75%
	2016	8	7	88%	5	63%
	2017	4	2	50%	2	50%
	2018	3	2	67%		
	2019	7	4	57%		
	2020	4	3	75%		

Retention and Graduation Rates by Geography

The majority of our TUG students are from Arkansas, Texas, and Oklahoma. The retention rate for Freshman students from Arkansas has remained steady for the past 5 years.

Retention to 2nd Year: Freshman Cohort by Geography



Graduation Rate: Freshman Cohort by Geography

6-Year Rates for 2011-15 Cohorts; 5-year rate for 2016; 4-year rate for 2017

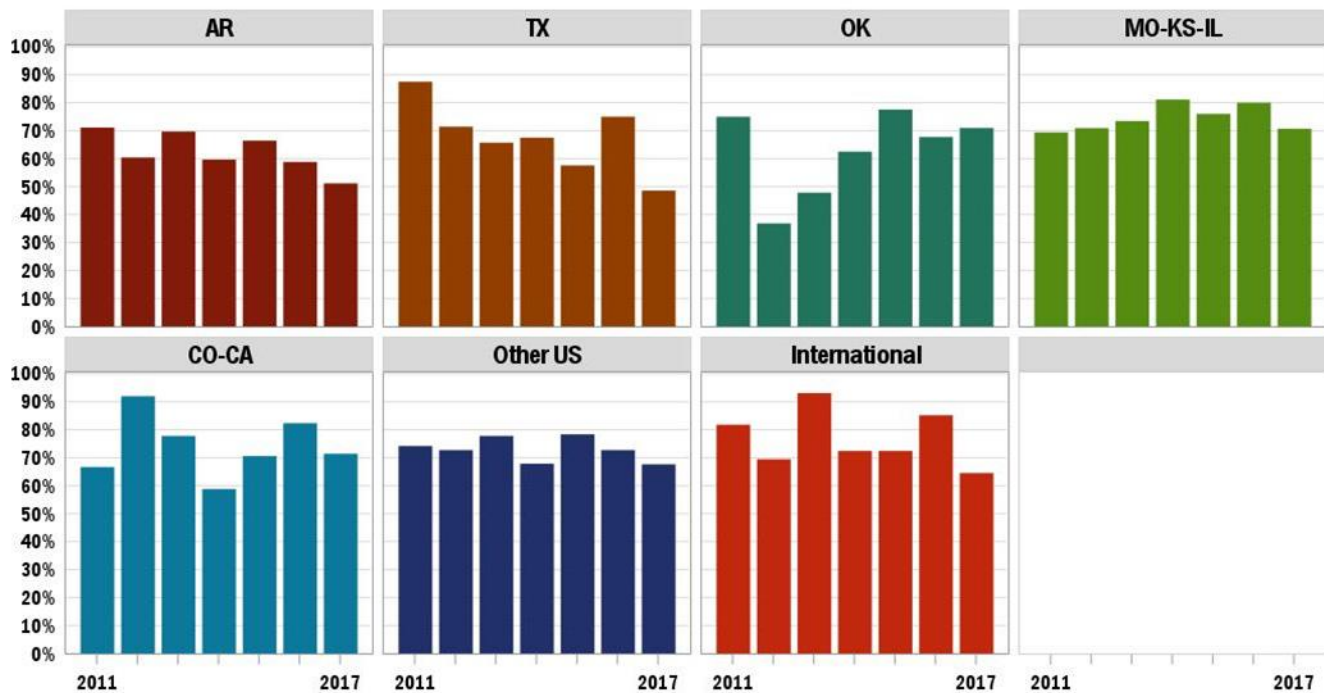
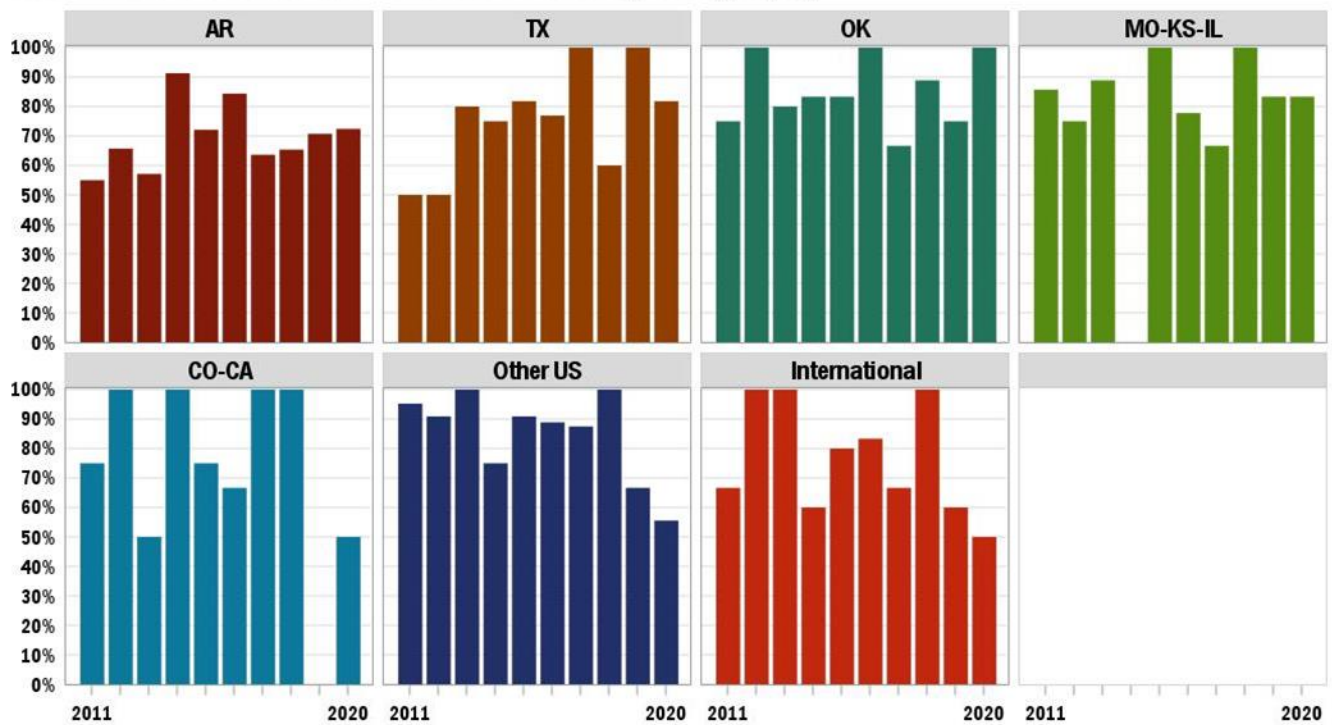


TABLE 11 FRESHMAN RETENTION AND GRADUATION RATES BY GEOGRAPHY

New Freshmen						
			Retained to 2nd Year		Graduated	
State	Entry Year	Initial Enrollment	#	%	#	%
AR	2011	142	119	84%	101	71%
	2012	101	80	79%	61	60%
	2013	122	100	82%	85	70%
	2014	119	90	76%	71	60%
	2015	143	113	79%	95	66%
	2016	119	94	79%	70	59%
	2017	129	98	76%	66	51%
	2018	116	90	78%		
	2019	127	101	80%		
	2020	117	82	70%		
CO-CA	2011	24	19	79%	16	67%
	2012	25	23	92%	23	92%
	2013	18	15	83%	14	78%
	2014	17	12	71%	10	59%
	2015	17	15	88%	12	71%
	2016	17	14	82%	14	82%
	2017	7	6	86%	5	71%
	2018	14	14	100%		
	2019	7	6	86%		
	2020	16	15	94%		
International	2011	22	18	82%	18	82%
	2012	36	29	81%	25	69%
	2013	29	29	100%	27	93%
	2014	29	27	93%	21	72%
	2015	29	28	97%	21	72%
	2016	27	26	96%	23	85%
	2017	31	28	90%	20	65%
	2018	29	27	93%		
	2019	33	29	88%		
	2020	25	24	96%		
MO-KS-IL	2011	49	39	80%	34	69%
	2012	55	47	85%	39	71%
	2013	49	45	92%	36	73%
	2014	53	46	87%	43	81%
	2015	50	44	88%	38	76%
	2016	40	33	83%	32	80%
	2017	58	46	79%	41	71%
	2018	50	43	86%		
	2019	57	53	93%		
	2020	60	50	83%		

New Freshmen						
			Retained to 2nd Year		Graduated	
State	Entry Year	Initial Enrollment	#	%	#	%
OK	2011	44	36	82%	33	75%
	2012	19	12	63%	7	37%
	2013	23	13	57%	11	48%
	2014	32	27	84%	20	63%
	2015	49	44	90%	38	78%
	2016	31	26	84%	21	68%
	2017	31	29	94%	22	71%
	2018	40	28	70%		
	2019	38	35	92%		
	2020	31	23	74%		
Other US	2011	31	27	87%	23	74%
	2012	33	27	82%	24	73%
	2013	27	25	93%	21	78%
	2014	28	24	86%	19	68%
	2015	37	32	86%	29	78%
	2016	33	27	82%	24	73%
	2017	34	29	85%	23	68%
	2018	25	21	84%		
	2019	23	21	91%		
	2020	24	19	79%		
TX	2011	48	43	90%	42	88%
	2012	49	44	90%	35	71%
	2013	35	29	83%	23	66%
	2014	40	32	80%	27	68%
	2015	33	29	88%	19	58%
	2016	56	45	80%	42	75%
	2017	35	24	69%	17	49%
	2018	45	39	87%		
	2019	34	30	88%		
	2020	42	37	88%		

Retention to 2nd Year: Transfer Cohort by Geography



Graduation Rate: Transfer Cohort by Geography

6-Year Rates for 2011-15 Cohorts; 5-year rate for 2016; 4-year rate for 2017

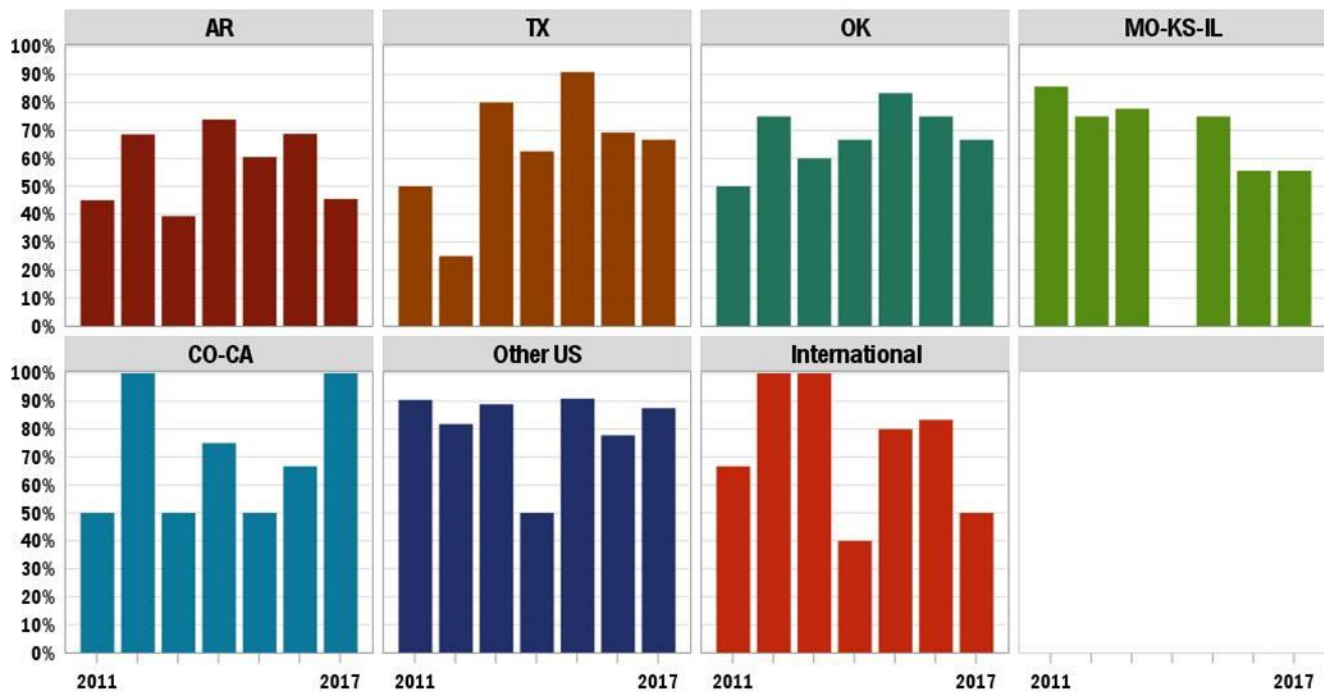


TABLE 12 TRANSFER RETENTION AND GRADUATION RATES BY GEOGRAPHY

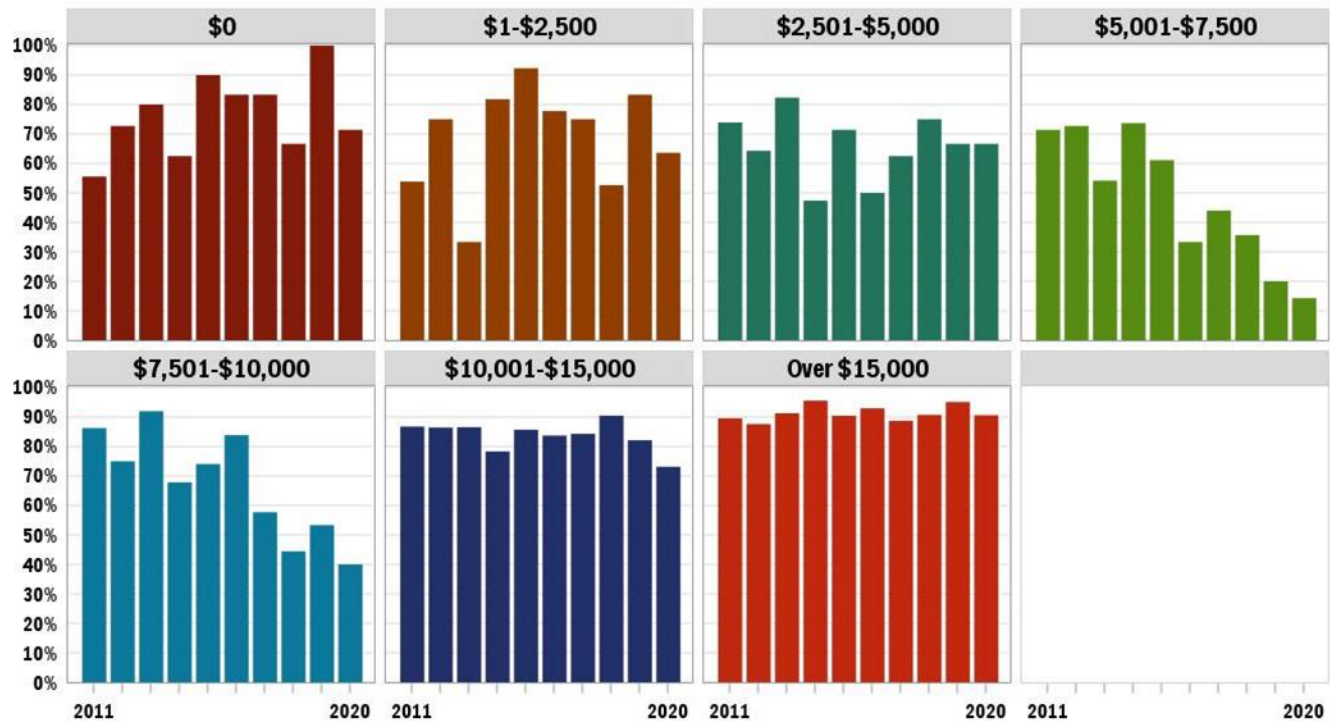
New Transfers						
			Retained to 2nd Year		Graduated	
State	Entry Year	Initial Enrollment	#	%	#	%
AR	2011	20	11	55%	9	45%
	2012	35	23	66%	24	69%
	2013	28	16	57%	11	39%
	2014	23	21	91%	17	74%
	2015	43	31	72%	26	60%
	2016	32	27	84%	22	69%
	2017	33	21	64%	15	45%
	2018	26	17	65%		
	2019	41	29	71%		
	2020	29	21	72%		
CO-CA	2011	4	3	75%	2	50%
	2012	2	2	100%	2	100%
	2013	2	1	50%	1	50%
	2014	4	4	100%	3	75%
	2015	4	3	75%	2	50%
	2016	3	2	67%	2	67%
	2017	2	2	100%	2	100%
	2018	2	2	100%		
	2019	1	0	0%		
	2020	2	1	50%		
International	2011	3	2	67%	2	67%
	2012	5	5	100%	5	100%
	2013	3	3	100%	3	100%
	2014	5	3	60%	2	40%
	2015	5	4	80%	4	80%
	2016	6	5	83%	5	83%
	2017	6	4	67%	3	50%
	2018	4	4	100%		
	2019	5	3	60%		
	2020	2	1	50%		
MO-KS-IL	2011	7	6	86%	6	86%
	2012	4	3	75%	3	75%
	2013	9	8	89%	7	78%
	2014	1	0	0%	0	0%
	2015	4	4	100%	3	75%
	2016	9	7	78%	5	56%
	2017	9	6	67%	5	56%
	2018	8	8	100%		
	2019	6	5	83%		
	2020	6	5	83%		

New Transfers						
			Retained to 2nd Year		Graduated	
State	Entry Year	Initial Enrollment	#	%	#	%
OK	2011	4	3	75%	2	50%
	2012	4	4	100%	3	75%
	2013	5	4	80%	3	60%
	2014	6	5	83%	4	67%
	2015	6	5	83%	5	83%
	2016	4	4	100%	3	75%
	2017	9	6	67%	6	67%
	2018	9	8	89%		
	2019	4	3	75%		
	2020	1	1	100%		
Other US	2011	21	20	95%	19	90%
	2012	11	10	91%	9	82%
	2013	9	9	100%	8	89%
	2014	8	6	75%	4	50%
	2015	11	10	91%	10	91%
	2016	9	8	89%	7	78%
	2017	8	7	88%	7	88%
	2018	1	1	100%		
	2019	3	2	67%		
	2020	9	5	56%		
TX	2011	6	3	50%	3	50%
	2012	4	2	50%	1	25%
	2013	5	4	80%	4	80%
	2014	8	6	75%	5	63%
	2015	11	9	82%	10	91%
	2016	13	10	77%	9	69%
	2017	3	3	100%	2	67%
	2018	5	3	60%		
	2019	3	3	100%		
	2020	11	9	82%		

Retention and Graduation Rates by Scholarship Amounts

One area that is often cited as a major factor in retention is finances. The data confirm that students are generally more likely to retain and graduate if they have higher scholarship amounts

Retention to 2nd Year: Freshman Cohort by Scholarship Amount



Graduation Rate: Freshman Cohort by Scholarship Amount

6-Year Rates for 2011-15 Cohorts; 5-year rate for 2016; 4-year rate for 2017



TABLE 13 FRESHMAN RETENTION AND GRADUATION RATES BY SCHOLARSHIP AMOUNT

New Freshmen						
			Retained to 2nd Year		Graduated	
Scholarship Amount	Entry Year	Initial Enrollment	#	%	#	%
\$0	2011	9	5	56%	3	33%
	2012	11	8	73%	5	45%
	2013	5	4	80%	3	60%
	2014	8	5	63%	3	38%
	2015	10	9	90%	7	70%
	2016	6	5	83%	5	83%
	2017	6	5	83%	5	83%
	2018	6	4	67%		
	2019	5	5	100%		
	2020	7	5	71%		
\$1-\$2,500	2011	13	7	54%	6	46%
	2012	16	12	75%	10	63%
	2013	6	2	33%	2	33%
	2014	11	9	82%	6	55%
	2015	13	12	92%	10	77%
	2016	9	7	78%	7	78%
	2017	16	12	75%	5	31%
	2018	19	10	53%		
	2019	12	10	83%		
	2020	11	7	64%		
\$2,501-\$5,000	2011	23	17	74%	15	65%
	2012	14	9	64%	6	43%
	2013	17	14	82%	8	47%
	2014	19	9	47%	6	32%
	2015	21	15	71%	11	52%
	2016	10	5	50%	4	40%
	2017	8	5	63%	4	50%
	2018	16	12	75%		
	2019	9	6	67%		
	2020	6	4	67%		
\$5,001-\$7,500	2011	28	20	71%	18	64%
	2012	22	16	73%	13	59%
	2013	24	13	54%	10	42%
	2014	19	14	74%	8	42%
	2015	18	11	61%	8	44%
	2016	24	8	33%	5	21%
	2017	25	11	44%	11	44%
	2018	14	5	36%		
	2019	10	2	20%		
	2020	7	1	14%		

New Freshmen						
			Retained to 2nd Year		Graduated	
Scholarship Amount	Entry Year	Initial Enrollment	#	%	#	%
\$7,501-\$10,000	2011	51	44	86%	39	76%
	2012	40	30	75%	26	65%
	2013	25	23	92%	15	60%
	2014	28	19	68%	17	61%
	2015	27	20	74%	15	56%
	2016	31	26	84%	19	61%
	2017	26	15	58%	7	27%
	2018	18	8	44%		
	2019	15	8	53%		
	2020	25	10	40%		
\$10,001-\$15,000	2011	121	105	87%	93	77%
	2012	118	102	86%	81	69%
	2013	134	116	87%	102	76%
	2014	120	94	78%	75	63%
	2015	112	96	86%	80	71%
	2016	129	108	84%	92	71%
	2017	102	86	84%	59	58%
	2018	84	76	90%		
	2019	84	69	82%		
	2020	67	49	73%		
Over \$15,000	2011	115	103	90%	93	81%
	2012	97	85	88%	73	75%
	2013	92	84	91%	77	84%
	2014	113	108	96%	96	85%
	2015	157	142	90%	121	77%
	2016	114	106	93%	94	82%
	2017	142	126	89%	103	73%
	2018	162	147	91%		
	2019	184	175	95%		
	2020	192	174	91%		

Retention to 2nd Year: Transfer Cohort by Scholarship Amount



Graduation Rate: Transfer Cohort by Scholarship Amount

6-Year Rates for 2011-15 Cohorts; 5-year rate for 2016; 4-year rate for 2017

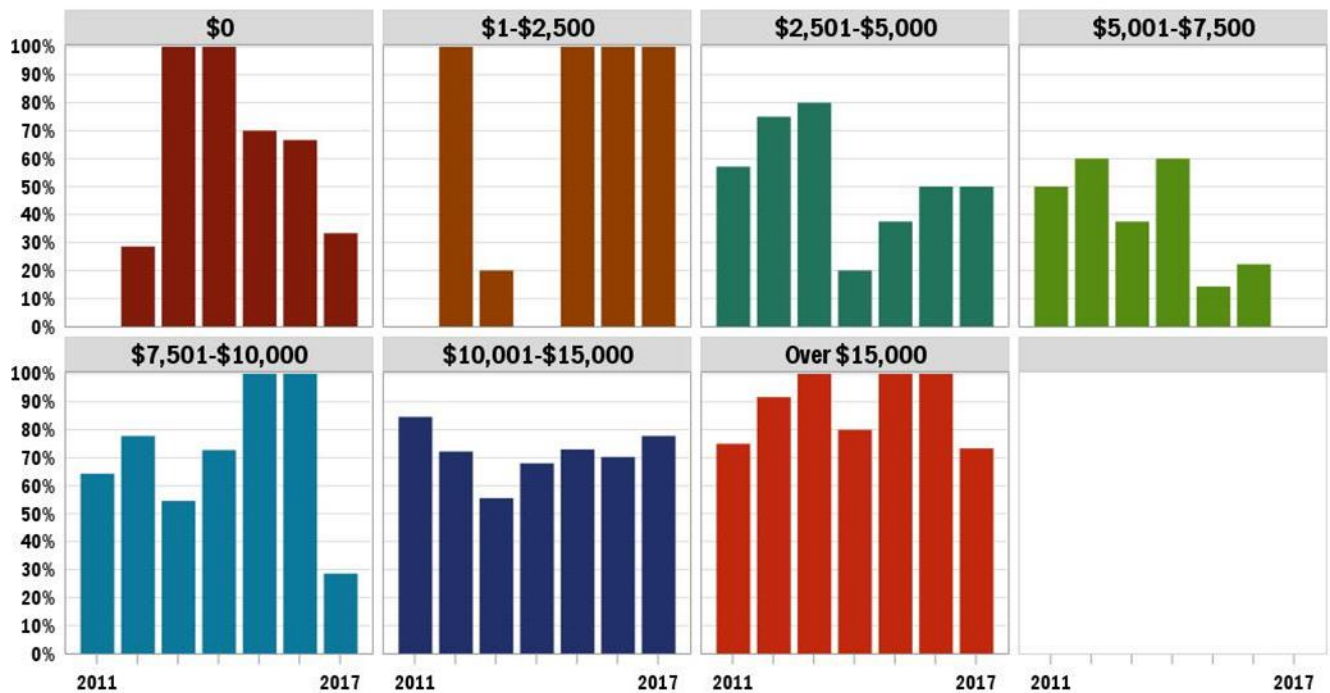


TABLE 14 TRANSFER RETENTION AND GRADUATION RATES BY SCHOLARSHIP AMOUNT

New Transfers						
			Retained to 2nd Year		Graduated	
Scholarship Amount	Entry Year	Initial Enrollment	#	%	#	%
\$0	2011	3	1	33%	0	0%
	2012	7	2	29%	2	29%
	2013	2	2	100%	2	100%
	2014	2	2	100%	2	100%
	2015	10	7	70%	7	70%
	2016	3	3	100%	2	67%
	2017	3	1	33%	1	33%
	2018	3	1	33%		
	2019	3	1	33%		
	2020	1	0	0%		
\$1-\$2,500	2011	3	0	0%	0	0%
	2012	1	1	100%	1	100%
	2013	5	3	60%	1	20%
	2014	2	1	50%	0	0%
	2015	4	4	100%	4	100%
	2016	1	1	100%	1	100%
	2017	3	3	100%	3	100%
	2018	1	1	100%		
	2019	6	3	50%		
	2020	4	3	75%		
\$2,501-\$5,000	2011	7	4	57%	4	57%
	2012	4	3	75%	3	75%
	2013	10	8	80%	8	80%
	2014	5	2	40%	1	20%
	2015	8	4	50%	3	38%
	2016	8	4	50%	4	50%
	2017	4	2	50%	2	50%
	2018	4	3	75%		
	2019	2	2	100%		
	2020	4	2	50%		
\$5,001-\$7,500	2011	4	2	50%	2	50%
	2012	5	2	40%	3	60%
	2013	8	3	38%	3	38%
	2014	5	4	80%	3	60%
	2015	7	2	29%	1	14%
	2016	9	5	56%	2	22%
	2017	11	3	27%	0	0%
	2018	3	1	33%		
	2019	6	1	17%		
	2020	2	1	50%		

New Transfers						
			Retained to 2nd Year		Graduated	
Scholarship Amount	Entry Year	Initial Enrollment	#	%	#	%
\$7,501-\$10,000	2011	14	9	64%	9	64%
	2012	18	14	78%	14	78%
	2013	11	7	64%	6	55%
	2014	11	9	82%	8	73%
	2015	5	4	80%	5	100%
	2016	3	3	100%	3	100%
	2017	7	4	57%	2	29%
	2018	1	0	0%		
	2019	3	1	33%		
	2020	3	0	0%		
\$10,001-\$15,000	2011	26	25	96%	22	85%
	2012	18	16	89%	13	72%
	2013	18	16	89%	10	56%
	2014	25	23	92%	17	68%
	2015	37	32	86%	27	73%
	2016	37	32	86%	26	70%
	2017	27	23	85%	21	78%
	2018	13	10	77%		
	2019	16	14	88%		
	2020	15	9	60%		
Over \$15,000	2011	8	7	88%	6	75%
	2012	12	11	92%	11	92%
	2013	7	6	86%	7	100%
	2014	5	4	80%	4	80%
	2015	13	13	100%	13	100%
	2016	15	15	100%	15	100%
	2017	15	13	87%	11	73%
	2018	30	27	90%		
	2019	27	23	85%		
	2020	31	28	90%		

Retention and Graduation Rates by Loan Amounts

Retention to 2nd Year: Freshman Cohort by Loan Amount



Graduation Rate: Freshman Cohort by Loan Amount

6-Year Rates for 2011-15 Cohorts; 5-year rate for 2016; 4-year rate for 2017

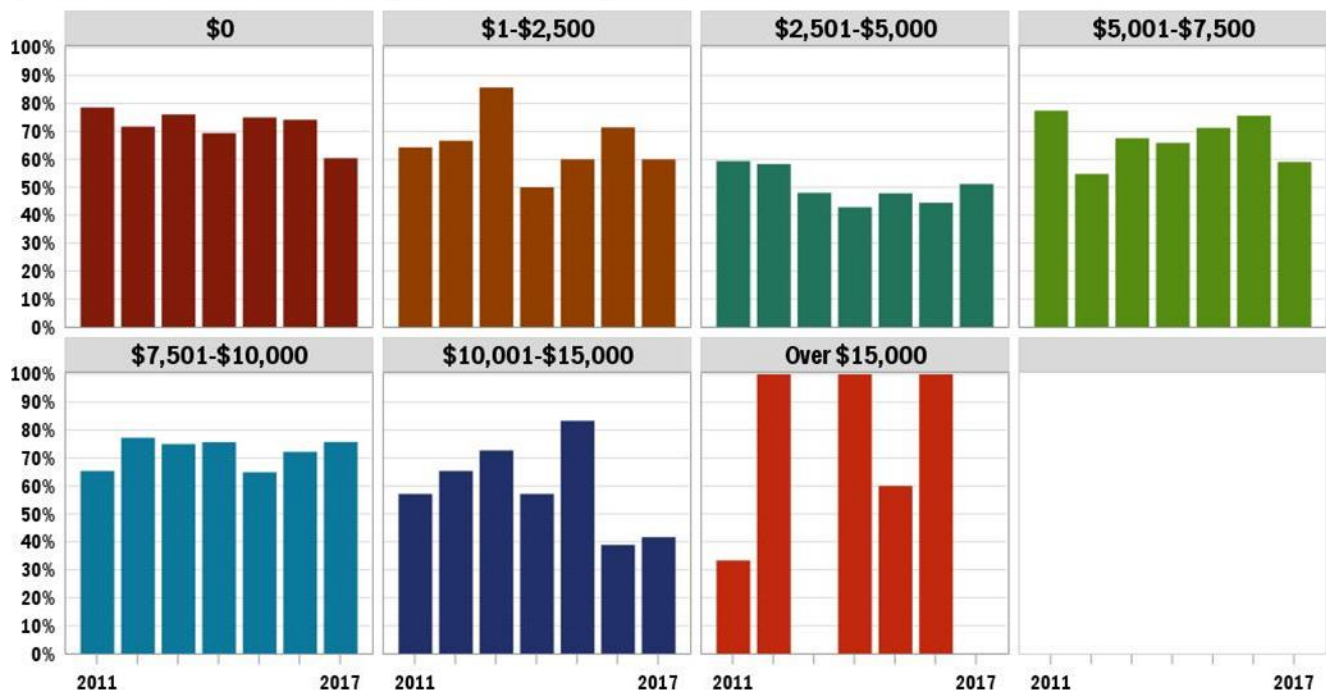
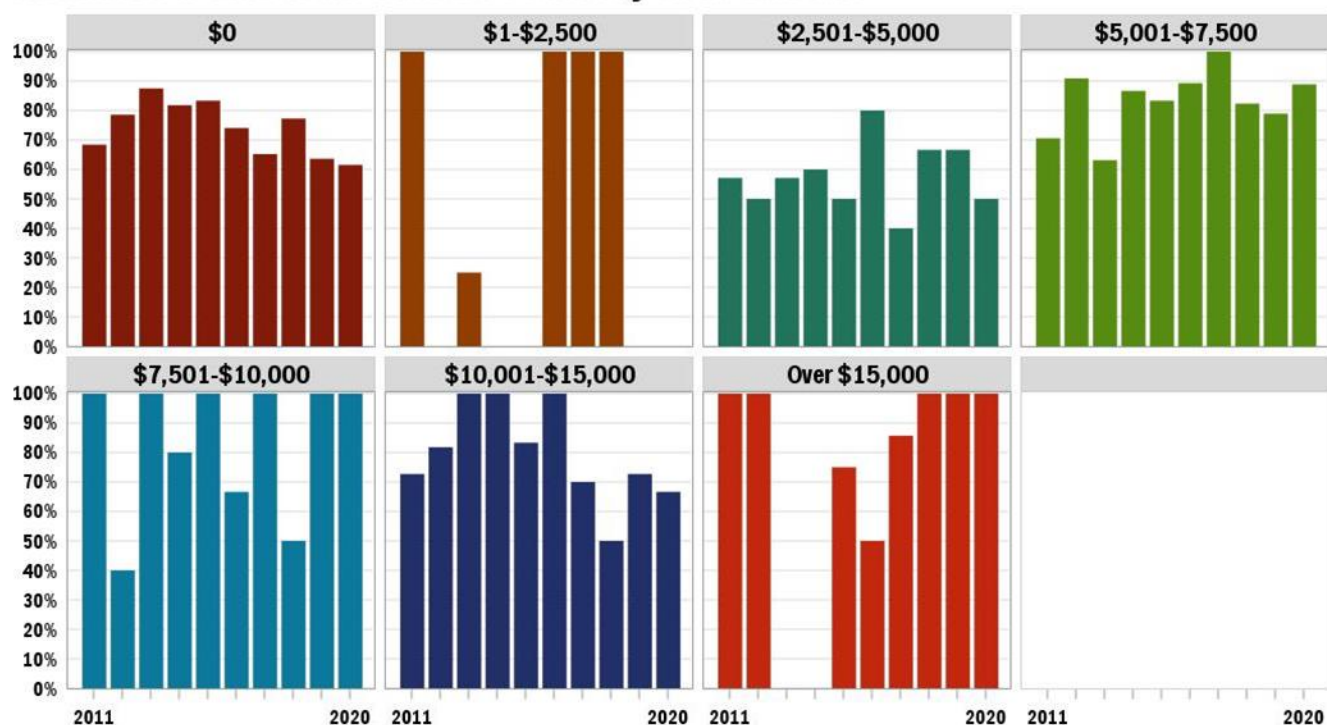


TABLE 15 FRESHMAN RETENTION AND GRADUATION RATES BY LOAN AMOUNT

New Freshmen						
			Retained to 2nd Year		Graduated	
Loan Amount	Entry Year	Initial Enrollment	#	%	#	%
\$0	2011	154	134	87%	121	79%
	2012	145	122	84%	104	72%
	2013	142	126	89%	108	76%
	2014	147	123	84%	102	69%
	2015	168	147	88%	126	75%
	2016	151	131	87%	112	74%
	2017	149	121	81%	90	60%
	2018	145	120	83%		
	2019	152	131	86%		
	2020	167	134	80%		
\$1-\$2,500	2011	14	12	86%	9	64%
	2012	3	2	67%	2	67%
	2013	7	7	100%	6	86%
	2014	4	4	100%	2	50%
	2015	5	3	60%	3	60%
	2016	7	6	86%	5	71%
	2017	5	3	60%	3	60%
	2018	5	3	60%		
	2019	7	5	71%		
	2020	3	2	67%		
\$2,501-\$5,000	2011	32	21	66%	19	59%
	2012	24	17	71%	14	58%
	2013	25	15	60%	12	48%
	2014	28	14	50%	12	43%
	2015	23	17	74%	11	48%
	2016	27	14	52%	12	44%
	2017	43	28	65%	22	51%
	2018	27	15	56%		
	2019	30	22	73%		
	2020	29	15	52%		
\$5,001-\$7,500	2011	124	109	88%	96	77%
	2012	73	57	78%	40	55%
	2013	74	60	81%	50	68%
	2014	85	70	82%	56	66%
	2015	94	83	88%	67	71%
	2016	82	72	88%	62	76%
	2017	83	70	84%	49	59%
	2018	72	65	90%		
	2019	101	93	92%		
	2020	87	75	86%		

New Freshmen						
			Retained to 2nd Year		Graduated	
Loan Amount	Entry Year	Initial Enrollment	#	%	#	%
\$7,501-\$10,000	2011	26	20	77%	17	65%
	2012	44	40	91%	34	77%
	2013	44	37	84%	33	75%
	2014	37	34	92%	28	76%
	2015	57	46	81%	37	65%
	2016	36	29	81%	26	72%
	2017	33	29	88%	25	76%
	2018	51	41	80%		
	2019	11	9	82%		
	2020	18	16	89%		
\$10,001-\$15,000	2011	7	4	57%	4	57%
	2012	26	21	81%	17	65%
	2013	11	11	100%	8	73%
	2014	14	10	71%	8	57%
	2015	6	6	100%	5	83%
	2016	18	11	61%	7	39%
	2017	12	9	75%	5	42%
	2018	13	12	92%		
	2019	10	8	80%		
	2020	7	6	86%		
Over \$15,000	2011	3	1	33%	1	33%
	2012	3	3	100%	3	100%
	2014	3	3	100%	3	100%
	2015	5	3	60%	3	60%
	2016	2	2	100%	2	100%
	2018	6	6	100%		
	2019	8	7	88%		
	2020	4	2	50%		

Retention to 2nd Year: Transfer Cohort by Loan Amount



Graduation Rate: Transfer Cohort by Loan Amount

6-Year Rates for 2011-15 Cohorts; 5-year rate for 2016; 4-year rate for 2017



TABLE 16 TRANSFER RETENTION AND GRADUATION RATES BY LOAN AMOUNT

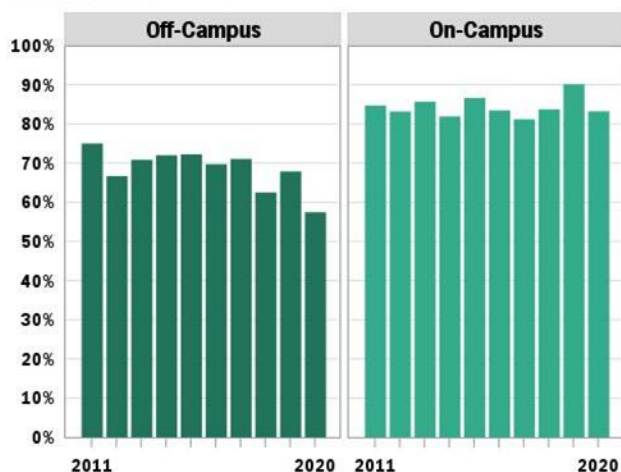
New Transfers						
			Retained to 2nd Year		Graduated	
Loan Amount	Entry Year	Initial Enrollment	#	%	#	%
\$0	2011	19	13	68%	12	63%
	2012	28	22	79%	22	79%
	2013	24	21	88%	17	71%
	2014	22	18	82%	14	64%
	2015	36	30	83%	29	81%
	2016	27	20	74%	17	63%
	2017	23	15	65%	12	52%
	2018	22	17	77%		
	2019	22	14	64%		
	2020	26	16	62%		
\$1-\$2,500	2011	1	1	100%	1	100%
	2013	4	1	25%	0	0%
	2014	1	0	0%	0	0%
	2015	3	0	0%	0	0%
	2016	1	1	100%	1	100%
	2017	1	1	100%	1	100%
	2018	1	1	100%		
	2019	1	0	0%		
	2020	1	0	0%		
\$2,501-\$5,000	2011	7	4	57%	2	29%
	2012	8	4	50%	4	50%
	2013	7	4	57%	4	57%
	2014	5	3	60%	3	60%
	2015	6	3	50%	2	33%
	2016	5	4	80%	4	80%
	2017	15	6	40%	4	27%
	2018	6	4	67%		
	2019	6	4	67%		
	2020	4	2	50%		
\$5,001-\$7,500	2011	17	12	71%	11	65%
	2012	11	10	91%	7	64%
	2013	19	12	63%	11	58%
	2014	15	13	87%	9	60%
	2015	18	15	83%	16	89%
	2016	28	25	89%	20	71%
	2017	12	12	100%	11	92%
	2018	17	14	82%		
	2019	19	15	79%		
	2020	18	16	89%		
\$7,501-\$10,000	2011	9	9	100%	8	89%

New Transfers						
			Retained to 2nd Year		Graduated	
Loan Amount	Entry Year	Initial Enrollment	#	%	#	%
	2012	5	2	40%	3	60%
	2013	4	4	100%	3	75%
	2014	5	4	80%	3	60%
	2015	5	5	100%	4	80%
	2016	3	2	67%	1	33%
	2017	2	2	100%	2	100%
	2018	2	1	50%		
	2019	2	2	100%		
	2020	3	3	100%		
\$10,001-\$15,000	2011	11	8	73%	8	73%
	2012	11	9	82%	9	82%
	2013	3	3	100%	2	67%
	2014	7	7	100%	6	86%
	2015	12	10	83%	7	58%
	2016	10	10	100%	9	90%
	2017	10	7	70%	5	50%
	2018	2	1	50%		
	2019	11	8	73%		
	2020	6	4	67%		
Over \$15,000	2011	1	1	100%	1	100%
	2012	2	2	100%	2	100%
	2015	4	3	75%	2	50%
	2016	2	1	50%	1	50%
	2017	7	6	86%	5	71%
	2018	5	5	100%		
	2019	2	2	100%		
	2020	2	2	100%		

Retention Rates by First-Year On-/Off-Campus Residence

The cohort size for off-campus freshmen is small—averaging less than 10% of the total cohort. It is clear, however that our freshmen commuters are missing out on something that helps connect them to the institution.

Retention to 2nd Year: Freshman Cohort by Residence



Retention to 2nd Year: Transfer Cohort by Residence

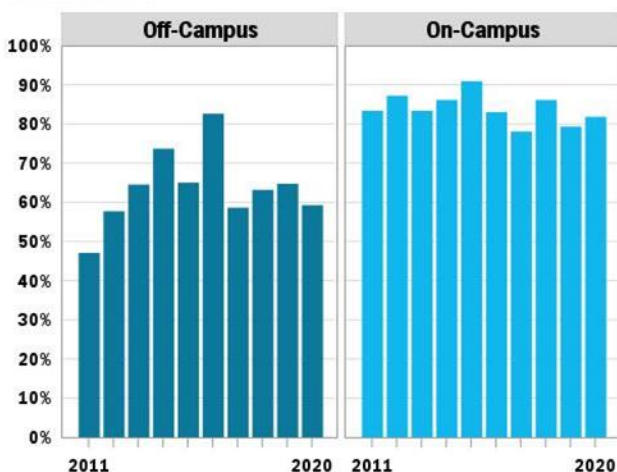


TABLE 17 FRESHMAN RETENTION AND GRADUATION RATES BY RESIDENCE

New Freshmen						
			Retained to 2nd Year		Graduated	
On-/Off-Campus	Entry Year	Initial Enrollment	#	%	#	%
Off-Campus	2011	40	30	75%	25	63%
	2012	15	10	67%	7	47%
	2013	24	17	71%	13	54%
	2014	25	18	72%	12	48%
	2015	36	26	72%	22	61%
	2016	33	23	70%	15	45%
	2017	38	27	71%	17	45%
	2018	24	15	63%		
	2019	56	38	68%		
	2020	47	27	57%		
On-Campus	2011	320	271	85%	242	76%
	2012	303	252	83%	207	68%
	2013	279	239	86%	204	73%
	2014	293	240	82%	199	68%
	2015	322	279	87%	230	71%
	2016	290	242	83%	211	73%
	2017	287	233	81%	177	62%
	2018	295	247	84%		
	2019	263	237	90%		
	2020	268	223	83%		

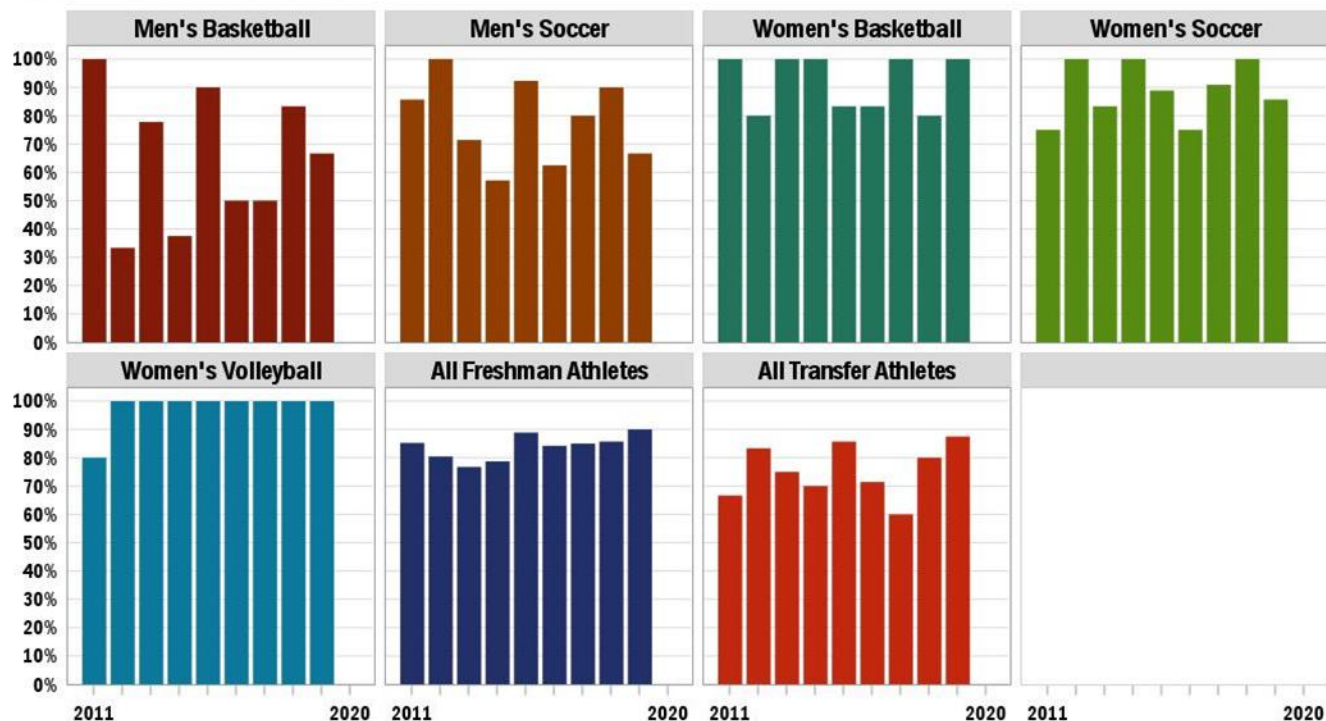
TABLE 18 TRANSFER RETENTION AND GRADUATION RATES BY RESIDENCE

New Transfers						
			Retained to 2nd Year		Graduated	
On-Off-Campus	Entry Year	Initial Enrollment	#	%	#	%
Off-Campus	2011	17	8	47%	7	41%
	2012	26	15	58%	16	62%
	2013	31	20	65%	14	45%
	2014	19	14	74%	9	47%
	2015	40	26	65%	21	53%
	2016	23	19	83%	15	65%
	2017	29	17	59%	13	45%
	2018	19	12	63%		
	2019	34	22	65%		
	2020	27	16	59%		
On-Campus	2011	48	40	83%	36	75%
	2012	39	34	87%	31	79%
	2013	30	25	83%	23	77%
	2014	36	31	86%	26	72%
	2015	44	40	91%	39	89%
	2016	53	44	83%	38	72%
	2017	41	32	78%	27	66%
	2018	36	31	86%		
	2019	29	23	79%		
	2020	33	27	82%		

Retention and Graduation Rates by Athletes

On the whole, our athletes persist at rates similar to those of the student body. There is great year-to-year variation within individual sports. The cohort sizes of most sports and for transfers by sport are too small to be treated separately.

Retention to 2nd Year: Athletes



Graduation Rate: Athletes

6-Year Rates for 2011-15 Cohorts; 5-year rate for 2016; 4-year rate for 2017

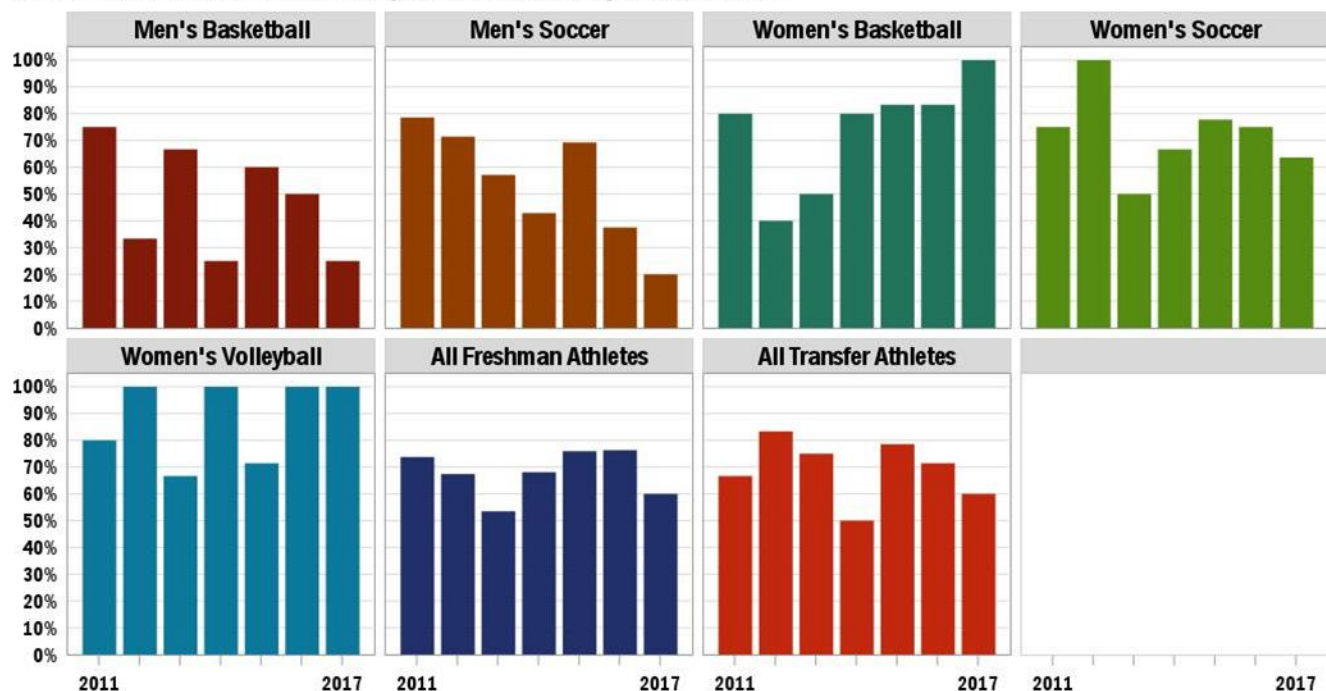


TABLE 19 ATHLETE RETENTION AND GRADUATION RATES

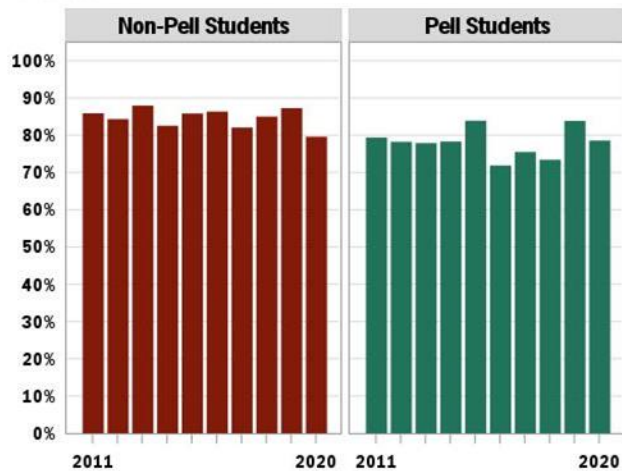
Athletes						
			Retained to 2nd Year		Graduated	
Sport	Entry Year	Initial Enrollment	#	%	#	%
All Freshman Athletes	2011	61	52	85%	45	74%
	2012	46	37	80%	31	67%
	2013	43	33	77%	23	53%
	2014	47	37	79%	32	68%
	2015	54	48	89%	41	76%
	2016	38	32	84%	29	76%
	2017	40	34	85%	24	60%
	2018	42	36	86%		
	2019	50	45	90%		
All Transfer Athletes	2011	6	4	67%	4	67%
	2012	6	5	83%	5	83%
	2013	8	6	75%	6	75%
	2014	10	7	70%	5	50%
	2015	14	12	86%	11	79%
	2016	7	5	71%	5	71%
	2017	5	3	60%	3	60%
	2018	5	4	80%		
	2019	8	7	88%		
Men's Basketball	2011	4	4	100%	3	75%
	2012	6	2	33%	2	33%
	2013	9	7	78%	6	67%
	2014	8	3	38%	2	25%
	2015	10	9	90%	6	60%
	2016	2	1	50%	1	50%
	2017	8	4	50%	2	25%
	2018	6	5	83%		
	2019	6	4	67%		
Men's Soccer	2011	14	12	86%	11	79%
	2012	7	7	100%	5	71%
	2013	7	5	71%	4	57%
	2014	7	4	57%	3	43%
	2015	13	12	92%	9	69%
	2016	8	5	63%	3	38%
	2017	5	4	80%	1	20%
	2018	10	9	90%		
	2019	9	6	67%		
Women's Basketball	2011	5	5	100%	4	80%
	2012	5	4	80%	2	40%
	2013	4	4	100%	2	50%
	2014	5	5	100%	4	80%

Athletes						
			Retained to 2nd Year		Graduated	
Sport	Entry Year	Initial Enrollment	#	%	#	%
	2015	6	5	83%	5	83%
	2016	6	5	83%	5	83%
	2017	2	2	100%	2	100%
	2018	5	4	80%		
	2019	4	4	100%		
Women's Soccer	2011	12	9	75%	9	75%
	2012	5	5	100%	5	100%
	2013	6	5	83%	3	50%
	2014	3	3	100%	2	67%
	2015	9	8	89%	7	78%
	2016	4	3	75%	3	75%
	2017	11	10	91%	7	64%
	2018	5	5	100%		
	2019	7	6	86%		
Women's Volleyball	2011	5	4	80%	4	80%
	2012	3	3	100%	3	100%
	2013	3	3	100%	2	67%
	2014	3	3	100%	3	100%
	2015	7	7	100%	5	71%
	2016	5	5	100%	5	100%
	2017	2	2	100%	2	100%
	2018	3	3	100%		
	2019	5	5	100%		

Retention and Graduation Rates by Pell Status: Freshman Only

Generally, Pell recipients have retained and graduated at a slightly lower rate than the non-Pell students with a greater difference in the graduation rate than in the retention rate.

Retention to 2nd Year: Freshman by Pell Status



Graduation Rate: Freshman by Pell Status
6-Year Rates for 2011-15 Cohorts; 5-year rate for 2016; 4-year rate for 2017

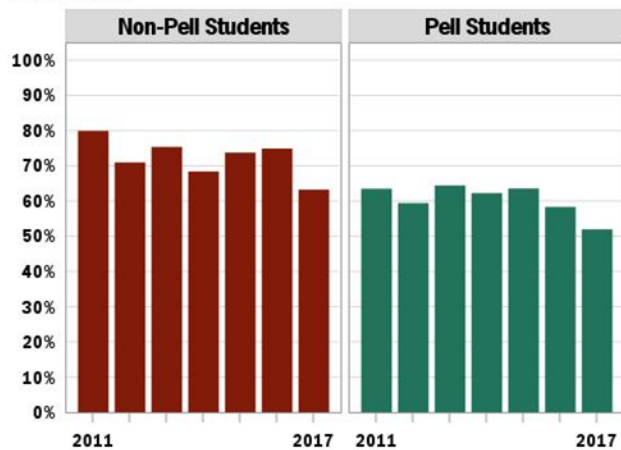
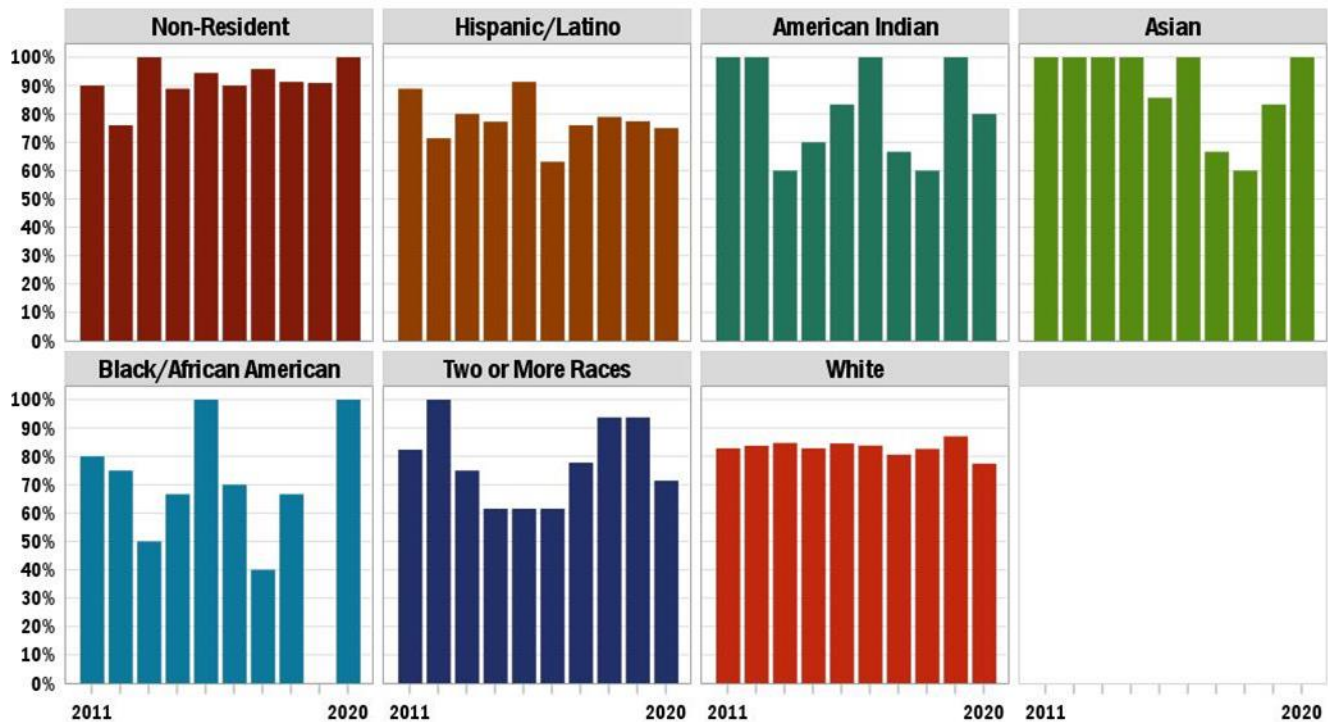


TABLE 20 FRESHMAN RETENTION AND GRADUATION RATES BY PELL STATUS

New Freshmen						
			Retained to 2nd Year		Graduated	
Pell Status	Entry Year	Initial Enrollment	#	%	#	%
Non-Pell Students	2011	234	201	86%	187	80%
	2012	217	183	84%	154	71%
	2013	199	175	88%	150	75%
	2014	212	175	83%	145	68%
	2015	240	206	86%	177	74%
	2016	227	196	86%	170	75%
	2017	223	183	82%	141	63%
	2018	240	204	85%		
	2019	220	192	87%		
	2020	245	195	80%		
Pell Students	2011	126	100	79%	80	63%
	2012	101	79	78%	60	59%
	2013	104	81	78%	67	64%
	2014	106	83	78%	66	62%
	2015	118	99	84%	75	64%
	2016	96	69	72%	56	58%
	2017	102	77	75%	53	52%
	2018	79	58	73%		
	2019	99	83	84%		
	2020	70	55	79%		

Retention and Graduation Rates by Race/Ethnicity: Freshman Only

Retention to 2nd Year: Freshman by Race/Ethnicity



Graduation Rate: Freshman by Race/Ethnicity

6-Year Rates for 2011-15 Cohorts; 5-year rate for 2016; 4-year rate for 2017

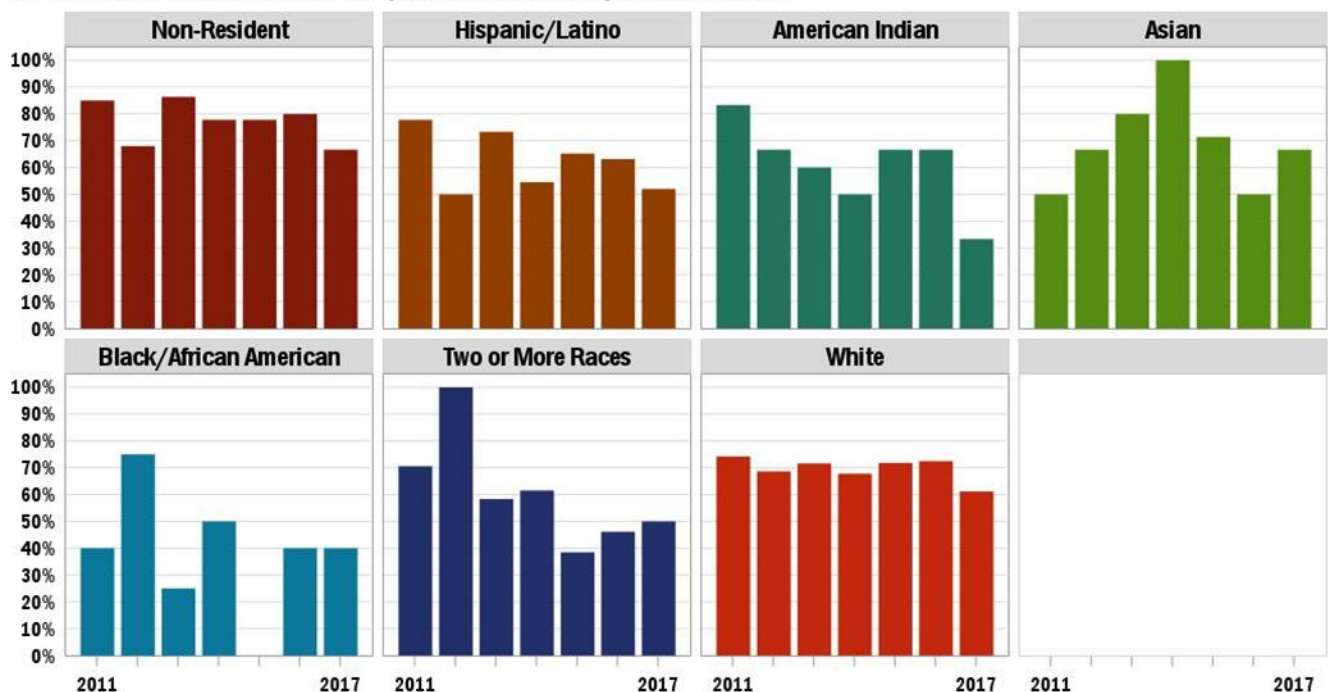


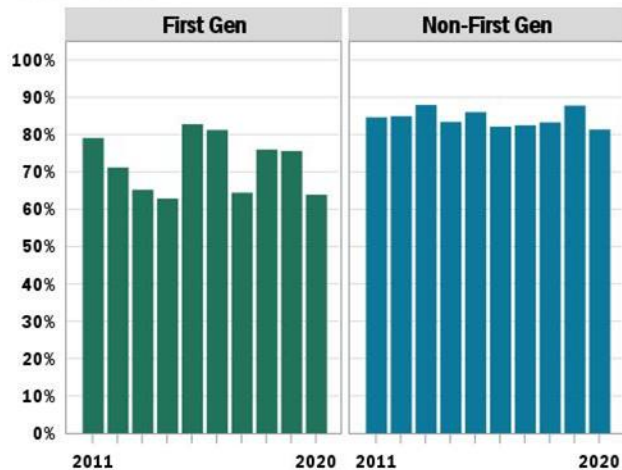
TABLE 21 FRESHMAN RETENTION AND GRADUATION RATES BY RACE/ETHNICITY

New Freshmen						
			Retained to 2nd Year		Graduated	
Race Ethnicity	Entry Year	Initial Enrollment	#	%	#	%
Non-Resident	2011	20	18	90%	17	85%
	2012	25	19	76%	17	68%
	2013	22	22	100%	19	86%
	2014	18	16	89%	14	78%
	2015	18	17	94%	14	78%
	2016	20	18	90%	16	80%
	2017	24	23	96%	16	67%
	2018	23	21	91%		
	2019	22	20	91%		
	2020	18	18	100%		
Hispanic/Latino	2011	18	16	89%	14	78%
	2012	28	20	71%	14	50%
	2013	15	12	80%	11	73%
	2014	22	17	77%	12	55%
	2015	23	21	91%	15	65%
	2016	19	12	63%	12	63%
	2017	25	19	76%	13	52%
	2018	19	15	79%		
	2019	31	24	77%		
	2020	20	15	75%		
American Indian	2011	6	6	100%	5	83%
	2012	3	3	100%	2	67%
	2013	5	3	60%	3	60%
	2014	10	7	70%	5	50%
	2015	12	10	83%	8	67%
	2016	3	3	100%	2	67%
	2017	6	4	67%	2	33%
	2018	5	3	60%		
	2019	3	3	100%		
	2020	5	4	80%		
Asian	2011	2	2	100%	1	50%
	2012	3	3	100%	2	67%
	2013	5	5	100%	4	80%
	2014	2	2	100%	2	100%
	2015	7	6	86%	5	71%
	2016	4	4	100%	2	50%
	2017	3	2	67%	2	67%
	2018	5	3	60%		
	2019	6	5	83%		

New Freshmen						
			Retained to 2nd Year		Graduated	
Race Ethnicity	Entry Year	Initial Enrollment	#	%	#	%
	2020	5	5	100%		
Black/African American	2011	5	4	80%	2	40%
	2012	4	3	75%	3	75%
	2013	4	2	50%	1	25%
	2014	6	4	67%	3	50%
	2015	4	4	100%	0	0%
	2016	10	7	70%	4	40%
	2017	5	2	40%	2	40%
	2018	6	4	67%		
	2019	3	0	0%		
	2020	6	6	100%		
Two or More Races	2011	17	14	82%	12	71%
	2012	3	3	100%	3	100%
	2013	12	9	75%	7	58%
	2014	13	8	62%	8	62%
	2015	13	8	62%	5	38%
	2016	13	8	62%	6	46%
	2017	18	14	78%	9	50%
	2018	16	15	94%		
	2019	16	15	94%		
	2020	14	10	71%		
White	2011	291	241	83%	216	74%
	2012	252	211	84%	173	69%
	2013	236	200	85%	169	72%
	2014	239	198	83%	162	68%
	2015	259	219	85%	186	72%
	2016	247	207	84%	179	72%
	2017	237	191	81%	145	61%
	2018	236	195	83%		
	2019	232	202	87%		
	2020	226	175	77%		

Retention and Graduation Rates by First-Gen Status: Freshman Only

Retention to 2nd Year: Freshman by First Gen Status



Graduation Rate: Freshman by First-Gen Status

6-Year Rates for 2011-15 Cohorts; 5-year rate for 2016; 4-year rate for 2017

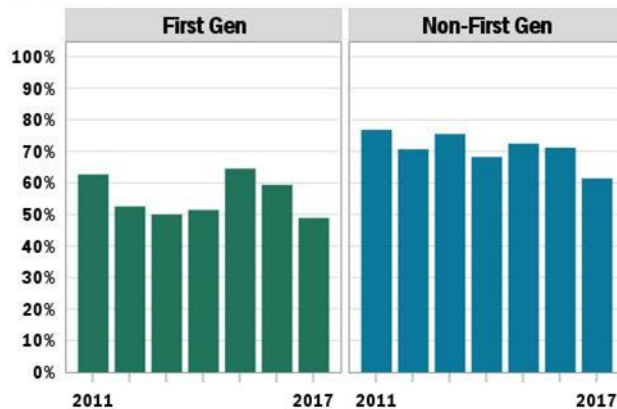


TABLE 22 FRESHMAN RETENTION AND GRADUATION RATES BY FIRST-GENERATION STATUS

New Freshmen						
			Retained to 2nd Year		Graduated	
First Gen	Entry Year	Initial Enrollment	#	%	#	%
First Gen	2011	67	53	79%	42	63%
	2012	59	42	71%	31	53%
	2013	46	30	65%	23	50%
	2014	35	22	63%	18	51%
	2015	93	77	83%	60	65%
	2016	32	26	81%	19	59%
	2017	45	29	64%	22	49%
	2018	50	38	76%		
	2019	41	31	76%		
	2020	36	23	64%		
Non-First Gen	2011	293	248	85%	225	77%
	2012	259	220	85%	183	71%
	2013	257	226	88%	194	75%
	2014	283	236	83%	193	68%
	2015	265	228	86%	192	72%
	2016	291	239	82%	207	71%
	2017	280	231	83%	172	61%
	2018	269	224	83%		
	2019	278	244	88%		
	2020	279	227	81%		

Contact Information

Lynette Duncan

Director of Institutional Research & Assessment

lduncan@jbu.edu

479.524.7225