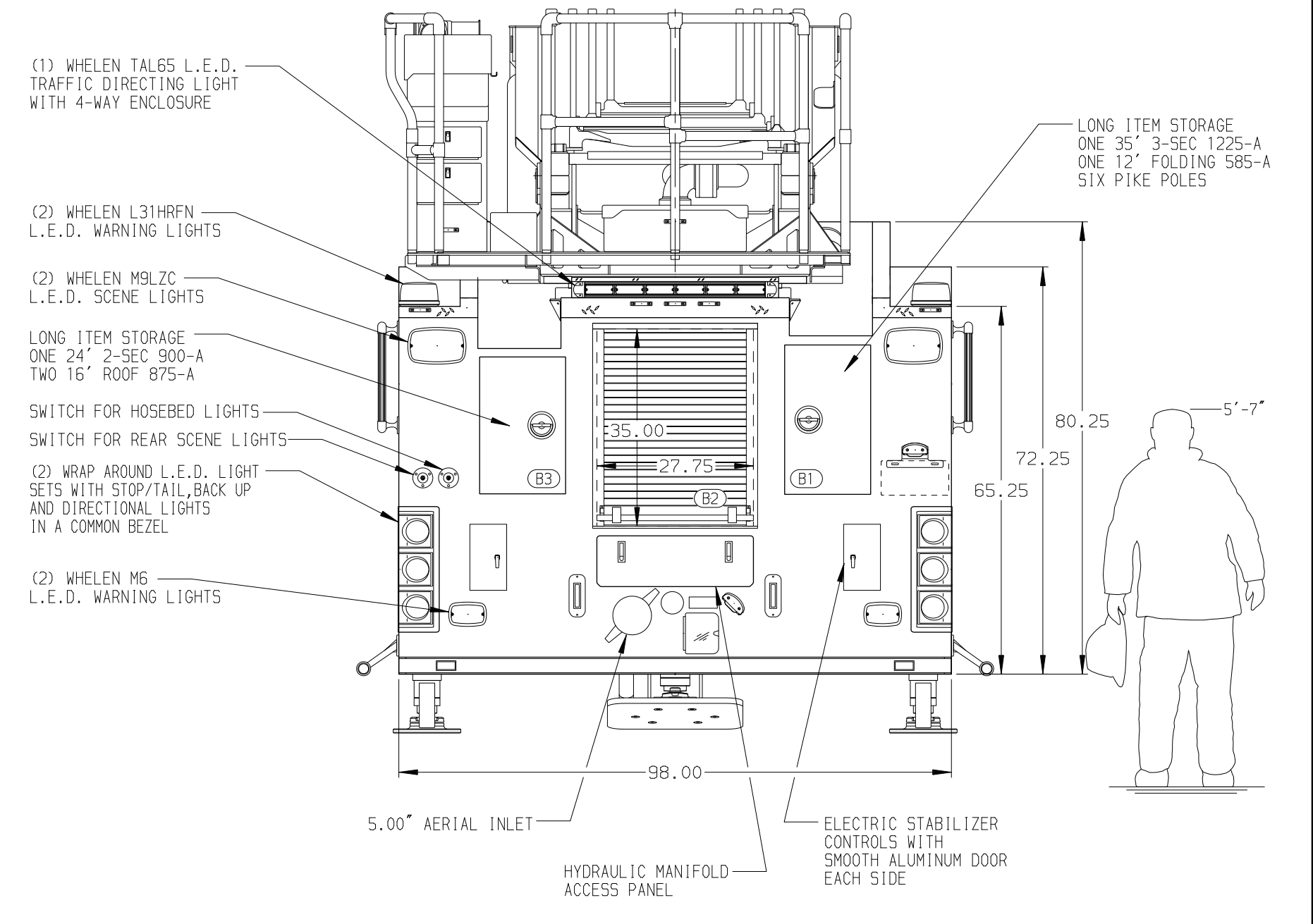


<b>BODY</b> 107' ASL Aluminum Body <b>COMPT, LEFT SIDE FRONT</b> Full Height RollUp Forward <b>COMPT, LEFT SIDE REAR</b> Full Height RollUp Rearward <b>COMPT, RIGHT SIDE FRONT</b> Full Height RollUp Forward <b>COMPT, RIGHT SIDE REAR</b> Full Height RollUp Rearward	<b>WATER TANK</b> 500 Gallon Poly Water Tank <b>Foam System</b> Foam System Not Required <b>Foam Cell</b> Foam Cell Not Required
---	---



<b>CHASSIS</b> Enforcer Chassis	<b>CAB</b> 7010 Notched Enforcer Cab	<b>AXLE, FRONT, CUSTOM</b> 22,800 Lb TAK-4 Axle	<b>TRANSMISSION</b> Allison 5th Gen, 4000 EV5 P	<b>PUMPHOUSE</b> 52" Control Zone Side Mount	<b>CROSSLAYS, 1.50"</b> (2) 1.50" Standard Capacity	<b>SPEEDLAYS</b> Speedlays Not Required	<b>SAFETY</b> Side Roll and Frontal Impact Protection
<b>ENGINE</b> 525 HP DD13 Engine	<b>BUMPER</b> 26" Extended Painted Underslung	<b>AXLE, REAR</b> 33,500 Lb Meritor Axle		<b>PUMP</b> 2000 GPM Waterous CSU	<b>CROSSLAYS, 2.50"</b> 2.50" Crosslay Not Required	<b>GENERATOR</b> Generator Not Required	

**NOTE**  
DIMENSIONS SHOWN ARE APPROXIMATE AND ARE SUBJECT TO MINOR DEVIATIONS AS MAY OCCUR OR BE NECESSARY IN CONSTRUCTION. MINOR DETAILS NOT SHOWN.

1. BLUE SEA SURE EJECT SHORELINE RECEPTACLE LOCATED ON DRIVER SIDE OF THE CAB
2. AIR INLET/OUTLET WITH DISCONNECT COUPLING LOCATED ON THE DRIVER SIDE PUMP PANEL
3. BATTERY CHARGER LOCATED IN COMPARTMENT PER SHOP ORDER
4. BATTERY CHARGE INDICATOR LOCATED ON DRIVER SIDE OF THE CAB
5. DUAL L.E.D. LIGHT STRIPS LOCATED IN HOSE BED
6. FIVE ADJUSTABLE SHELVES IN COMPARTMENTS PER SHOP ORDER
7. FOUR FLOOR MOUNTED SLIDE-OUT TRAYS IN COMPARTMENTS PER SHOP ORDER
8. ONE SWING-OUT ALUMINUM TOOL BOARD IN COMPARTMENT PER SHOP ORDER
9. PULL STRAP FOR COMPARTMENT DOORS PER SHOP ORDER
10. ONE CTECH DRAWER ASSEMBLY IN COMPARTMENT PER SHOP ORDER
11. TWO 120V DUPLEX RECEPTACLES LOCATED IN CAB PER SHOP ORDER
12. ONE 120V DUPLEX RECEPTACLE LOCATED IN COMPARTMENT PER SHOP ORDER
13. NON-RAISED AERIAL PEDESTAL
14. 1500 GPM HIGH FLOW WATERWAY
15. LIFE PULLEY RESCUE SYSTEM
16. NO LIMITED RETRACTION REQUIRED

		JOB NO.	35023
		SCALE	DATE
TITLE	107' ASCENDANT AERIAL LADDER AND BODY ASSEMBLY	DRAWN BY	TKA
FOR	HALL COUNTY EMERGENCY SERVICES GAINESVILLE, GEORGIA	CHECKED BY	JJR
DWG NO.	35023AD	SHEET SIZE	SHEET NO.
		D	1 OF 1