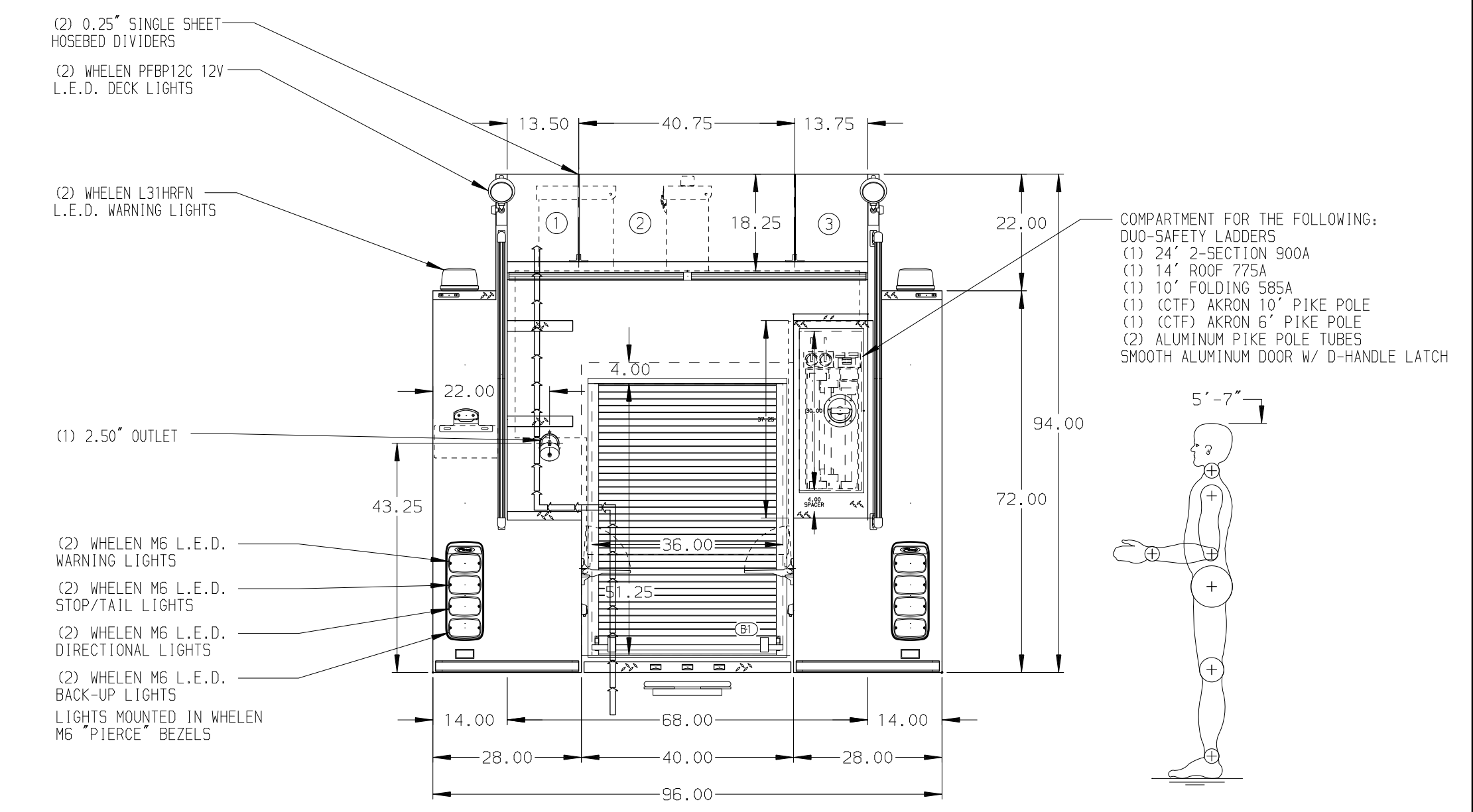


- HOSEBED CAPACITIES
- ① 500' OF 2.50" D.J. HOSE
 - ② 1000' OF 5.00" D.J. HOSE
 - ③ 500' OF 2.50" D.J. HOSE



ALUMINUM BODY

NOTE
DIMENSIONS SHOWN ARE APPROXIMATE AND ARE SUBJECT TO MINOR DEVIATIONS AS MAY OCCUR OR BE NECESSARY IN CONSTRUCTION. MINOR DETAILS NOT SHOWN.

		JOB NO.	34574				
		SCALE	DATE				
CHASSIS DATA MAKE PIERCE MODEL DWG NO.	TITLE	1500-D-1020P, 1000 GAL WATER W/ 20 GAL FOAM, 152" PUMPER BODY, SIDE CONTROL, LADDERS BESIDE TANK.	DRAWN BY	RHU	21NOV19		
	FOR	PIERCE FIELD UNIT BRADENTON, FLORIDA	CHECKED BY	-	-		
REV	DATE	BY	CH	SABER FR	SHEET SIZE	SHEET NO.	
				34574AD		D	1 OF 1