

PASSENGER'S SIDE COMPARTMENTS CONTAIN THE FOLLOWING:

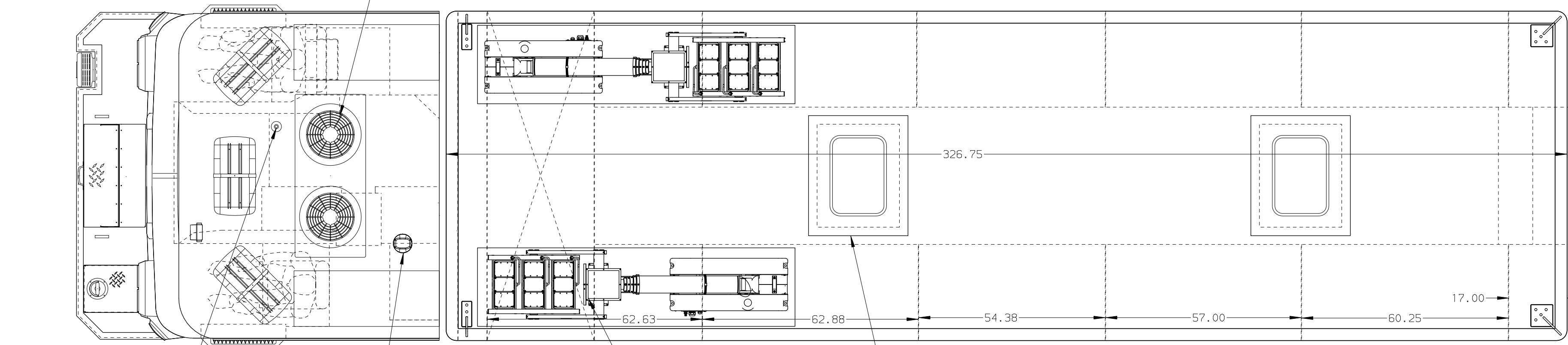
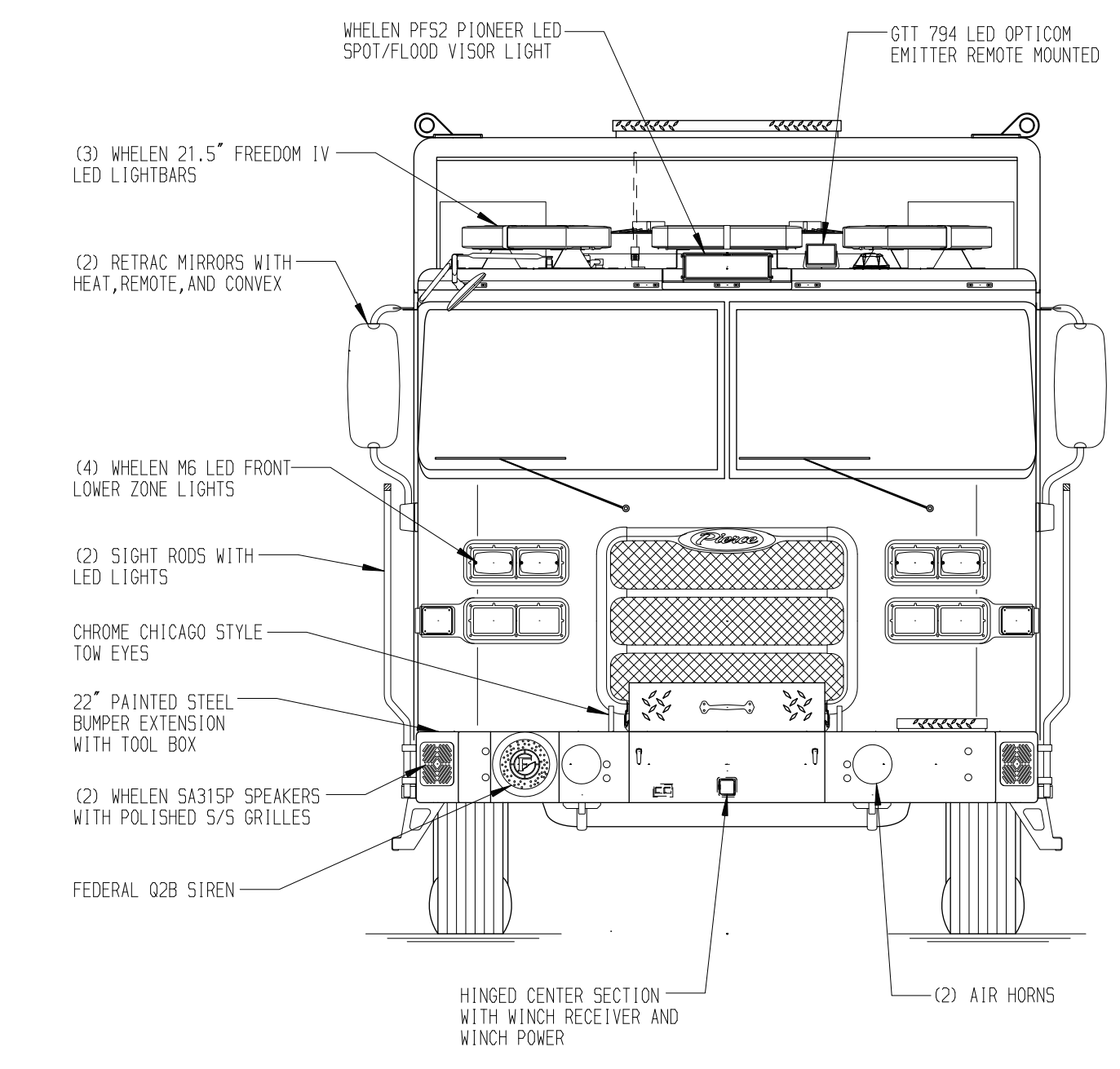
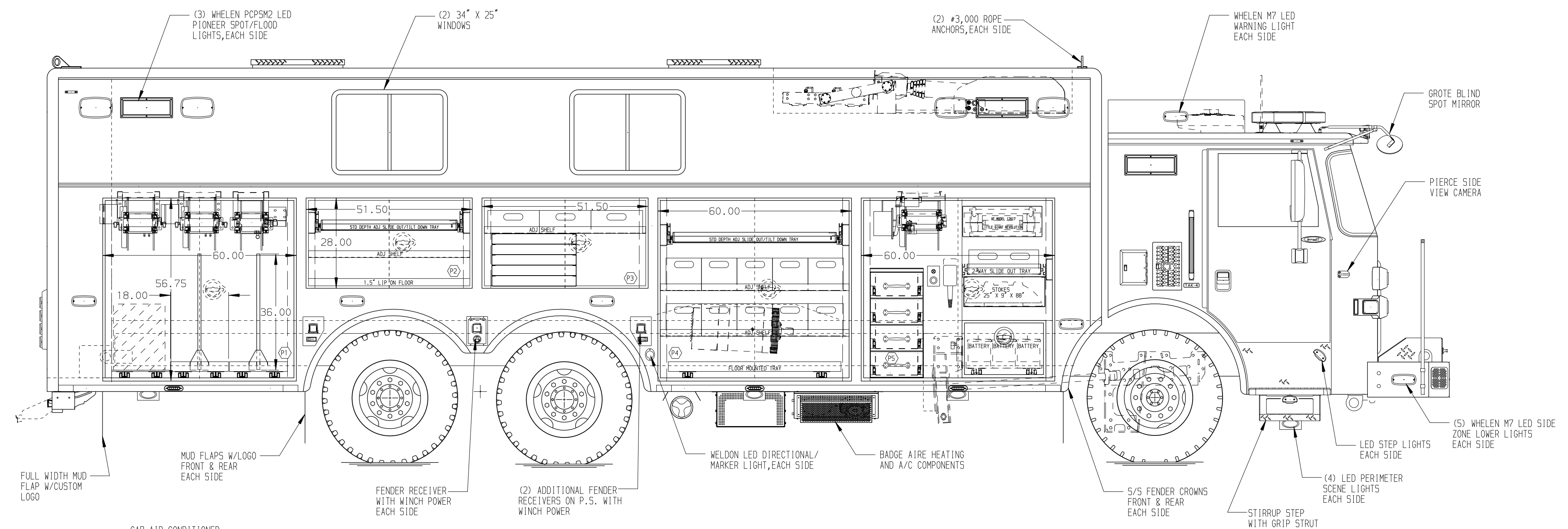
- COMPARTMENT P1 CONTAINS:**
- (2) FLOOR MOUNTED SLIDE OUT TRAYS WITH ADJ TOOLBOARDS
 - ADDITIONAL COMPARTMENT LOUVERS
 - PEGBOARD ON SIDE WALLS OF COMPARTMENT
 - (1) 30A, 240V T.L. RECEPTACLE
 - (1) L.P. AIR REEL WITH 150' OF HOSE
 - MOUNTING BRACKET FOR HYDRAULIC POWER UNIT
 - (2) HYDRAULIC REELS WITH 100' OF HOSE
 - (1) FLAT TOP FLOOR MOUNTED TRAY

- COMPARTMENT P2 CONTAINS:**
- 1.5" LIP ON COMPARTMENT FLOOR
 - (1) STD DEPTH ADJ SHELF
 - (1) STD DEPTH ADJ SLIDE OUT/TILT TRAY

- COMPARTMENT P3 CONTAINS:**
- (3) POLY TOOL BOXES
 - (1) RACK FOR 5 AIR BAGS
 - (1) STD DEPTH ADJ SHELF

- COMPARTMENT P4 CONTAINS:**
- (1) POLY TOOL BOXES
 - (1) FLOOR MOUNTED SLIDE OUT TRAY
 - (2) STD DEPTH ADJ SHELVES
 - (1) STD DEPTH ADJ SLIDE OUT/TILT TRAY

- COMPARTMENT P5 CONTAINS:**
- (1) CAB LIFT CONTROLLER
 - (1) BATTERY COMPARTMENT
 - (1) 4-DRAWER TOOL CABINET
 - (1) 2-WAY ADJ SLIDE OUT TRAY
 - (1) POLY TOOL BOX
 - (1) STOKES BASKET RACK
 - (1) RACK FOR LITTLE GIANT LADDER
 - (1) NIGHT SCAN CONTROLLER
 - (1) ELECTRIC CORD REEL WITH 175' OF 10/4 YELLOW CORD



DRIVER'S SIDE COMPARTMENTS CONTAIN THE FOLLOWING:

- COMPARTMENT D1 CONTAINS:**
- (4) POLY TOOL BOXES
 - (1) VERTICAL PEGBOARD DIVIDER
 - (4) STD DEPTH ADJ SLIDE OUT TOOLBOARDS
 - PEGBOARD ON SIDE WALLS OF COMPARTMENT
 - (3) STD DEPTH ADJ SHELVES

- COMPARTMENT D2 CONTAINS:**
- CARGO RETENTION NETTING

- COMPARTMENT D3 CONTAINS:**
- (1) STD DEPTH ADJ SLIDE OUT/TILT TRAY

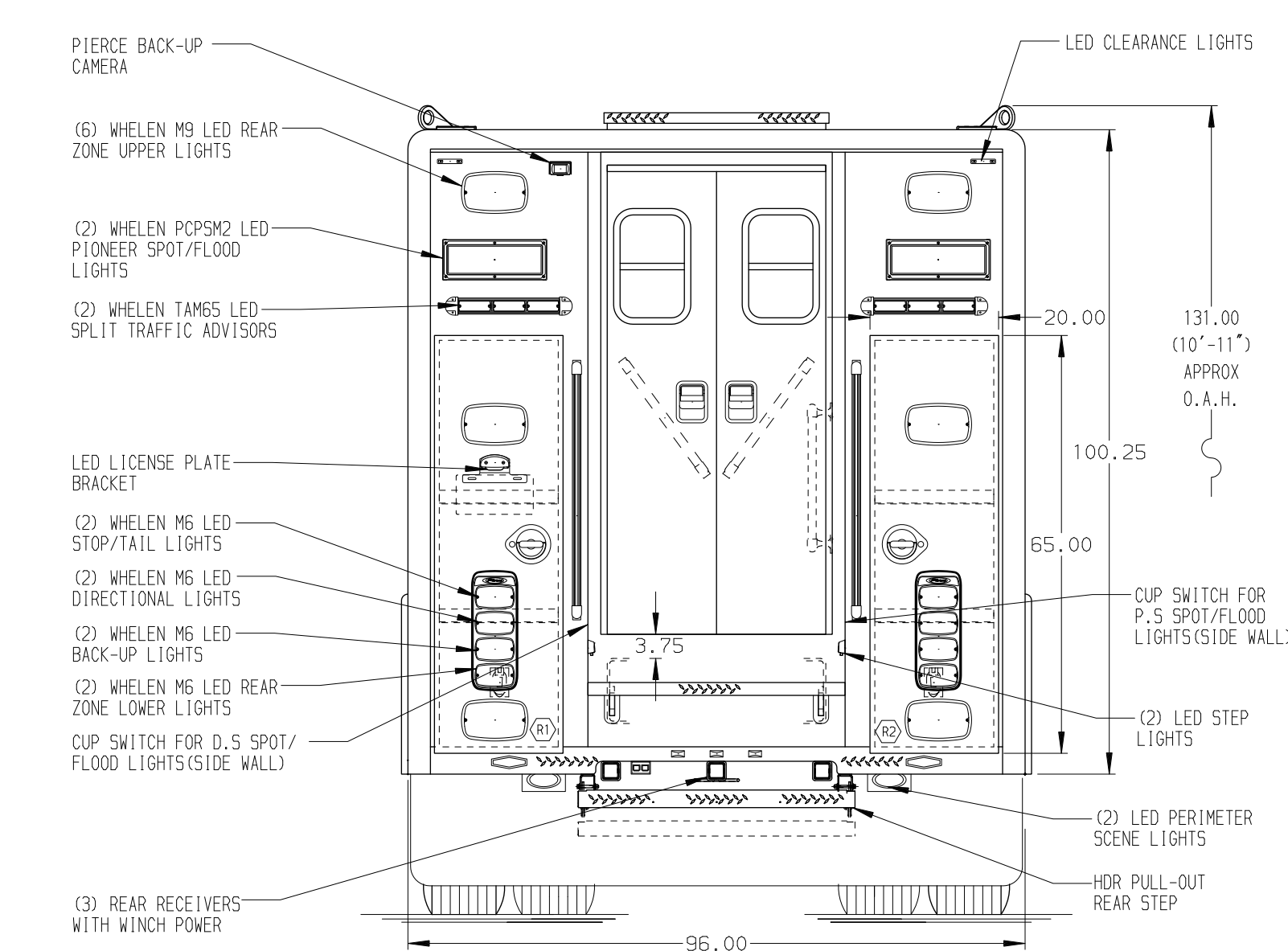
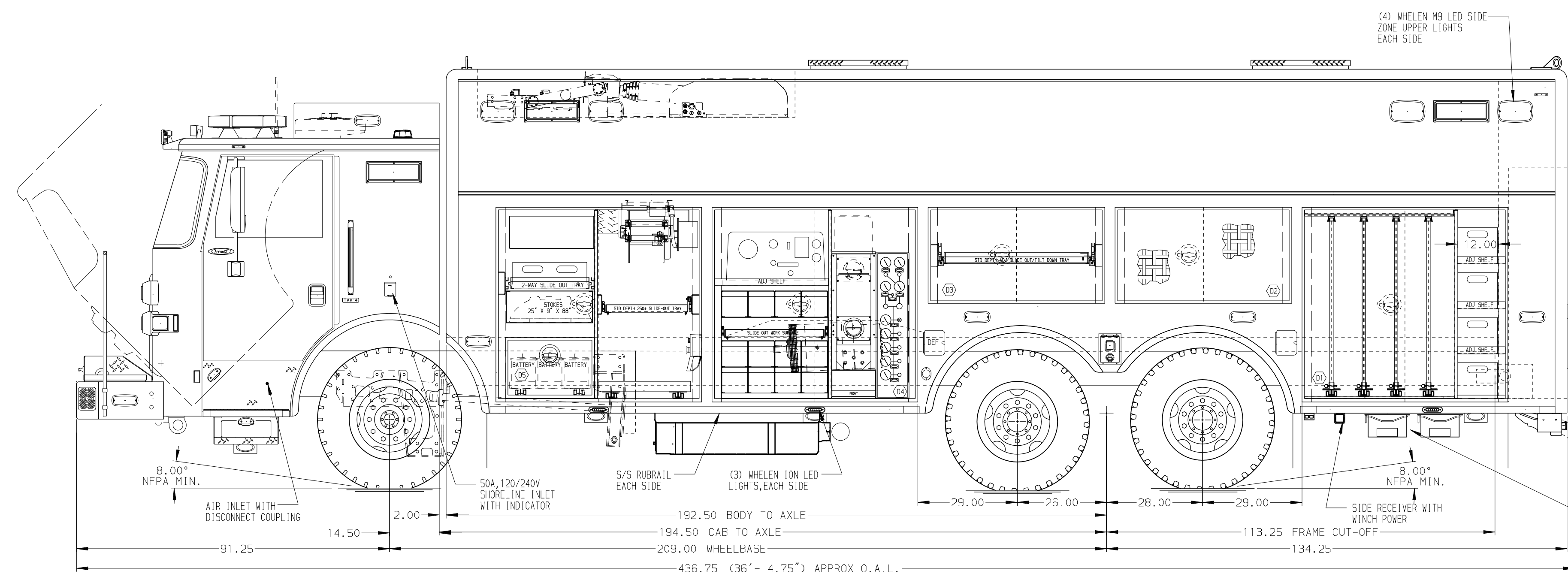
- COMPARTMENT D4 CONTAINS:**
- (1) RACK FOR 12 SCBA BOTTLES WITH SLIDE OUT WORK SURFACE
 - PEGBOARD ON LEFT WALL OF COMPARTMENT
 - (1) "SPACE SAVER" 2-BOTTLE FILL ENCLOSURE
 - (1) CASCADE SYSTEM CONTROL PANEL
 - (1) BREATHING AIR BOOSTER PUMP
 - (1) STD DEPTH ADJ SHELF

- COMPARTMENT D5 CONTAINS:**
- (1) KUSSMAUL PUMP PLUS 1200 CHARGER
 - (1) BATTERY COMPARTMENT
 - (1) RACK FOR LITTLE GIANT LADDER
 - (2) STD DEPTH FLOOR MOUNTED TRAYS
 - (1) STD DEPTH ADJ SLIDE OUT TRAY
 - (1) 2-WAY ADJ SLIDE OUT TRAY
 - (1) POLY TOOL BOX
 - (1) NIGHT SCAN CONTROLLER
 - (1) ELECTRIC CORD REEL WITH 175' OF 10/4 YELLOW CORD
 - (1) STOKES BASKET RACK
 - ADDITIONAL COMPARTMENT LOUVERS

REAR COMPARTMENTS CONTAIN THE FOLLOWING:

- COMPARTMENT R1 CONTAINS:**
- (2) ADJUSTABLE SHELVES
 - (1) 20A, 120V DUPLEX RECEPTACLE (10\"/>

- COMPARTMENT R2 CONTAINS:**
- (2) ADJUSTABLE SHELVES
 - (1) 20A, 120V DUPLEX RECEPTACLE (10\"/>



NOTE
DIMENSIONS SHOWN ARE APPROXIMATE AND ARE SUBJECT TO MINOR DEVIATIONS AS MAY OCCUR OR BE NECESSARY IN CONSTRUCTION. MINOR DETAILS NOT SHOWN.

- NOTES:**
1. QNAN 35KW SINGLE PHASE PTO DRIVEN GENERATOR WITH SPLASH GUARD LOCATED BETWEEN THE FRAME RAILS
 2. WARN ZEON #10,000 PORTABLE WINCH
 3. POLISHED S/S SCUFFPLATES ON CAB DOOR JAMBS
 4. FLOOR IN CAB AND CREW CAB TO BE PADDED RUBBER
 5. BATTERY CHARGE INDICATOR LOCATED ON DRIVER'S SEAT WITH RACKET
 6. PIERCE DUAL LED LIGHT STRIPS IN BODY COMPARTMENTS
 7. TURTLE TILE ON COMPARTMENT FLOORS, SHELVES AND TRAYS

NOTE:
LAP DOORS HAVE BEEN SHOWN IN HIDDEN LINES TO CLEARLY IDENTIFY THE EQUIPMENT IN EACH COMPARTMENT. DASHED LINES ON SIDES ARE DOORS IN OPEN POSITION

MAXIMUM O.A.H. 11'-1"

CLEAR DOOR WIDTH KEY		REV	DATE	BY	CH	CHASSIS DATA
AMDR ROLL UP DOORS:	-1 7/8"		14AUG17	DHE	AZU	MAKE
GORTITE ROLL UP DOORS:	-2 3/4"		20JUN17	DHE	AZU	PIERCE
PIERCE DOUBLE LAP DOORS:	-4 1/4"		19APR17	DHE	AZU	MODEL
PIERCE LIFT-UP LAP DOORS:	-1 1/2"					AX1500
(EX: 60" F-F - 1 7/8" = 58 1/8" CLEAR (F-F) = FRAME TO FRAME)						

		JOB NO.	30897
		SCALE	DATE
TITLE	HEAVY DUTY RESCUE WALKIN	DRAWN BY	29MAR17
FOR	TOMS RIVER TWP. FIRE DIST. #1 TOMS RIVER, NJ	CHECKED BY	30MAR17
DWG NO.	30897AD-SH1	SHEET SIZE	SHEET NO.
		D	1 OF 2