

**PUMPER BODY**

Medium Aluminum 2nd Gen Pumper

**CHASSIS**

Enforcer Chassis

**CHASSIS AXLE, FRONT, CUSTOM**

18,000 Lb Oshkosh Tak-4 Axle

**AXLE, REAR**

24,000 Lb Meritor Axle

**ENGINE**

450 HP Cummins L9

**TRANSMISSION**

Allison 5th Gen, 3000 EVS P

**BUMPER**

16" Extended Stainless Steel

**CAB**

7010 Enforcer Cab

**BODY WATER TANK**

750 Gallon New York Style Water Tank

**COMPT, PUMPER, REAR**

30.75" FF RollUp Rear Compt

**COMPT, PUMPER, DRIVER SIDE**

152" RollUp Full Height Front & Rear FDLR

**COMPT, PUMPER PASS. SIDE**

152" RollUp Full Height Front & Rear FDLR

**FIRE SUPPRESSION PUMPHOUSE**

48" Control Zone Side Mount

**PUMP**

1500 GPM Waterous CSU

**CROSSLAYS, 1.50"**

(2) 1.50" Standard Capacity

**CROSSLAYS, 2.50"**

(1) 2.50" Standard Capacity

**SPEEDLAYS**

SpeedLays Not Required

**GENERATOR**

Generator Not Required

**Foam System**

Piping For Future Husky 3/12 Foam System

**Foam Cell**

20 Gallon Foam Cell, Not Reduced Water

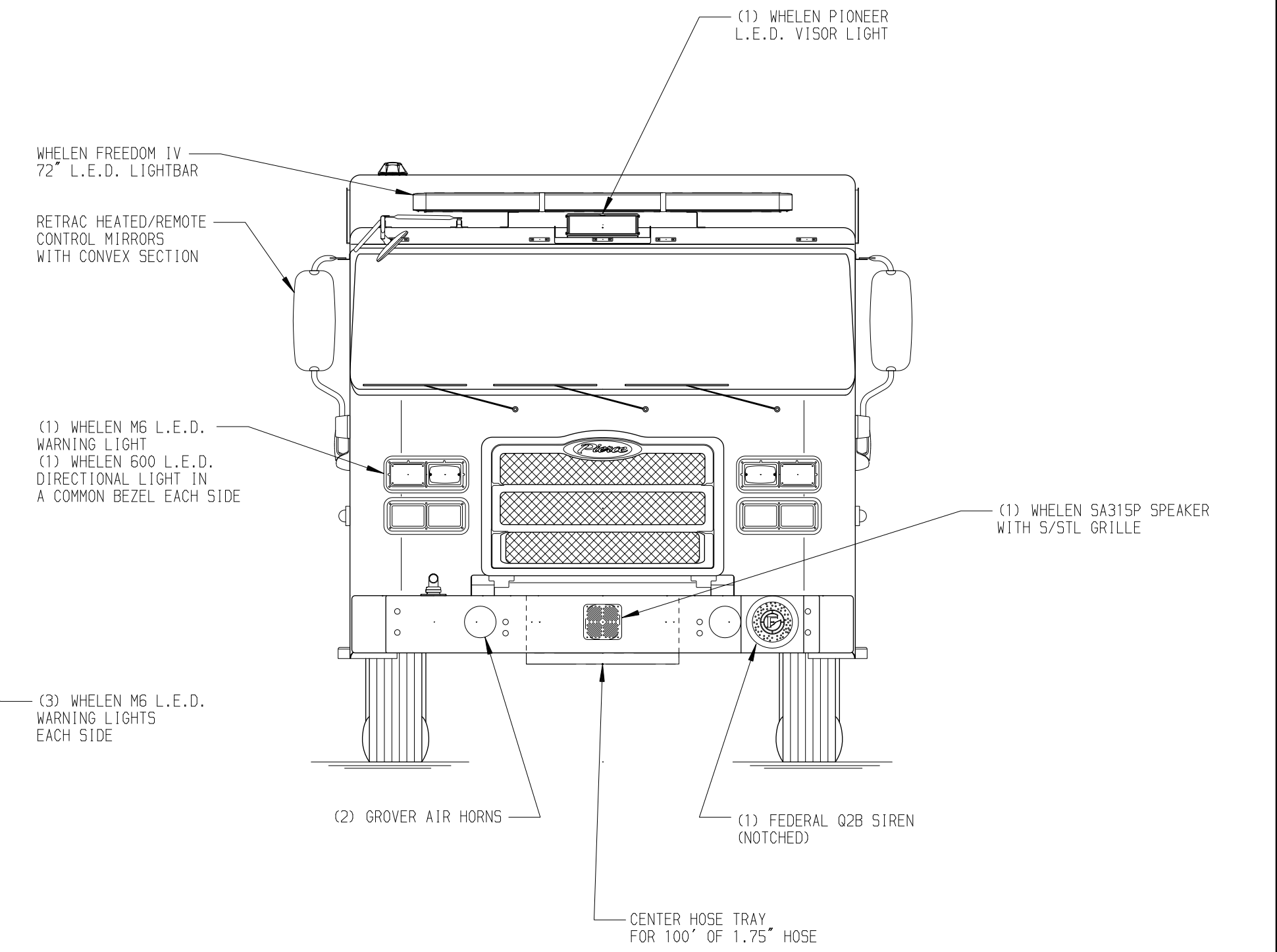
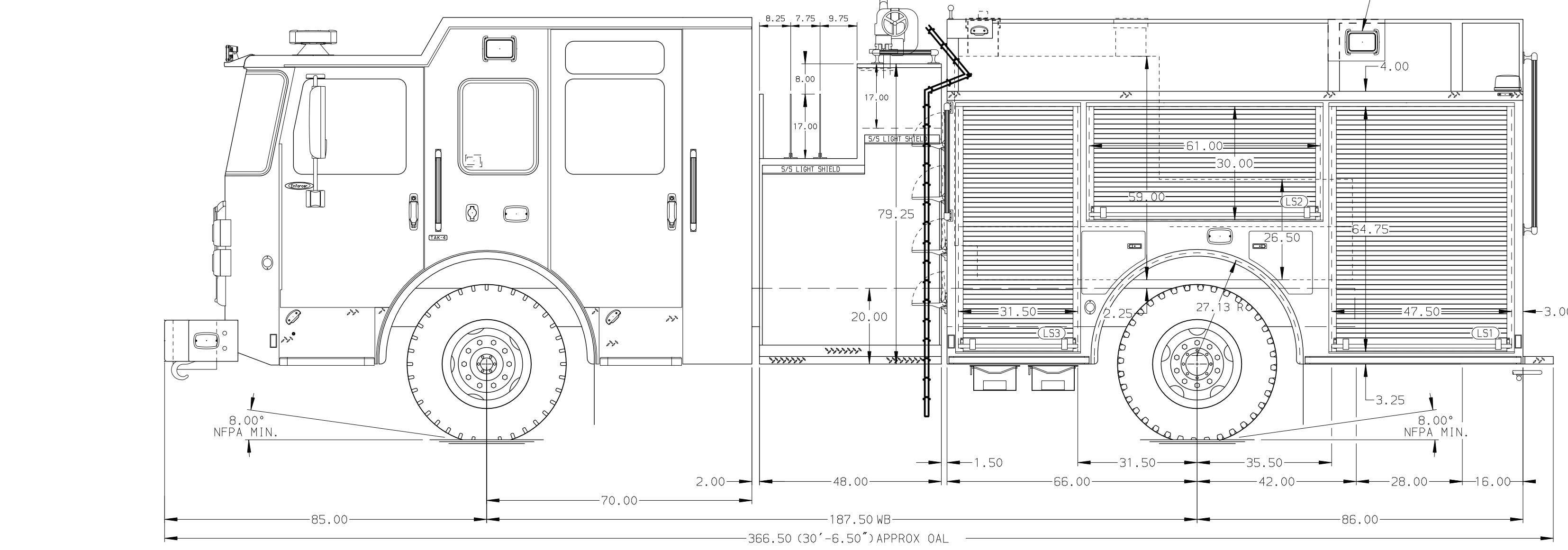
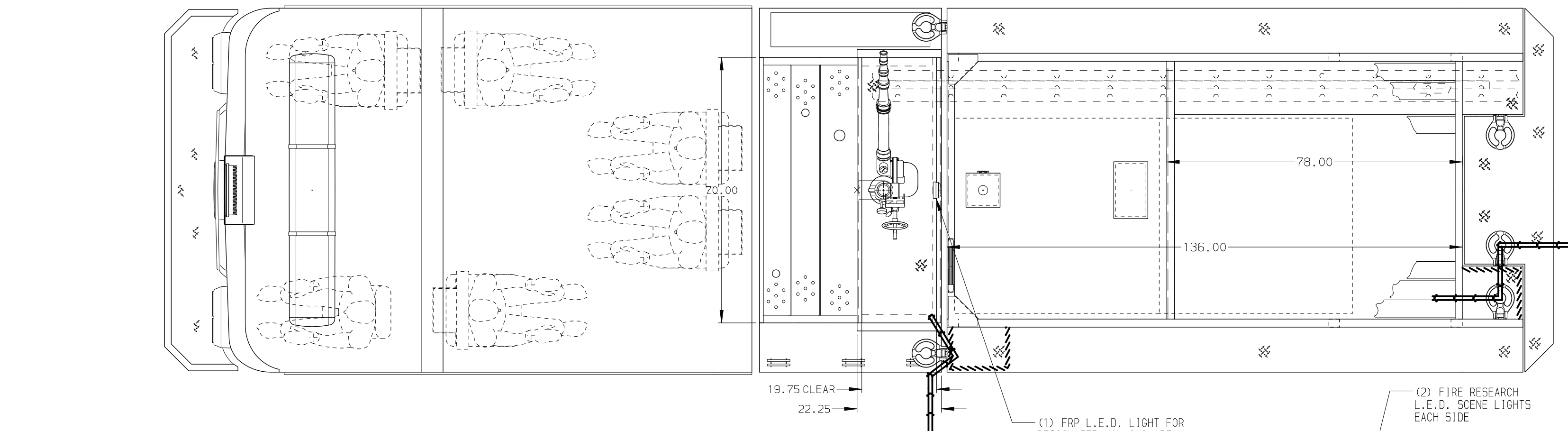
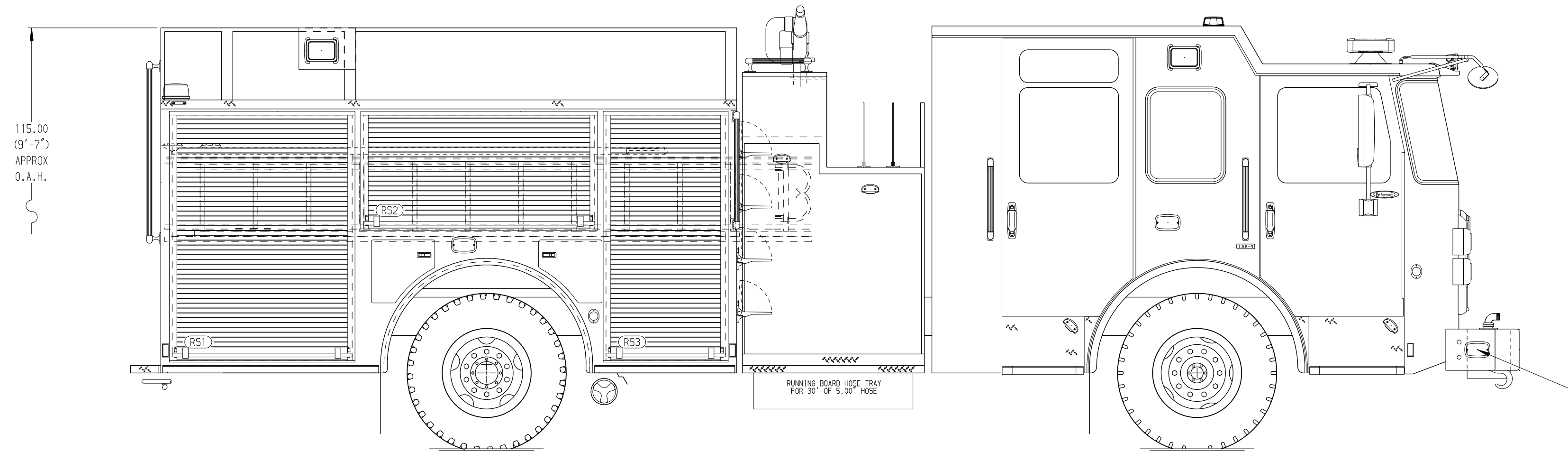
Side Roll and Frontal Impact Protection

**NOTE**

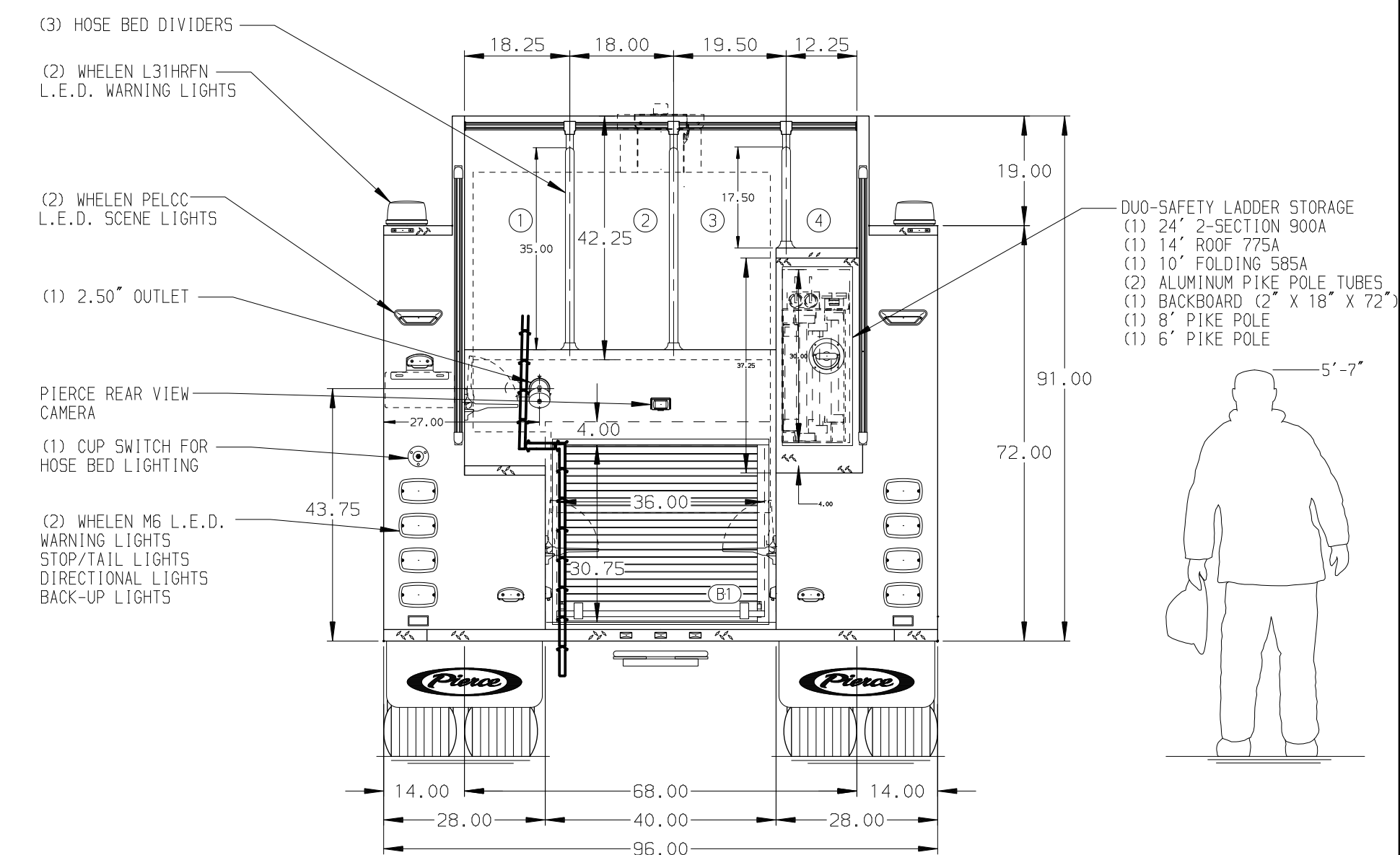
- ONE 1.50" OUTLET WITH 2.00" PIPING AND SWIVEL LOCATED ON TOP BUMPER RIGHT SIDE
- SHOULDER RECEPTACLE WITH KUSSMAUL SUPER AUTO-EJECT LOCATED ON DRIVER SIDE OF CAB
- AIR INLET WITH DISCONNECT COUPLING IN THE DRIVER SIDE STEPWELL
- BATTERY CHARGER LOCATED BEHIND DRIVER'S SEAT
- EIGHT ADJUSTABLE SHELVES IN COMPARTMENTS PER SHOP ORDER
- TWO 120V RECEPTACLES LOCATED PER SHOP ORDER
- ONE FLOOR MOUNTED TRAYS LOCATED IN COMPARTMENT PER SHOP ORDER
- FOUR PEGBOARD ON BACK WALL IN COMPARTMENTS PER SHOP ORDER
- AUTOMATIC TIRE CHAINS

MINOR DETAILS NOT SHOWN.

MAXIMUM O.A.H. 120.00"



HOSEBED CAPACITY	
<b>BED 1</b>	750' OF 3.00" D.J. POLY HOSE
<b>BED 2</b>	500' OF 5.00" D.J. POLY HOSE
<b>BED 3</b>	500' OF 5.00" D.J. POLY HOSE
<b>BED 4</b>	250' OF 3.00" D.J. POLY HOSE



**CUSTOMER APPROVAL**

APPROVED BY: \_\_\_\_\_  
DATE: \_\_\_\_\_



JOB NO. 36877

SCALE 1:24 DATE

REV	DATE	BY	CH	ENFORCER
040CT21	MMF	THS		PIERCE
30JUL21	MMF	THS		MODEL

TITLE	FOR	DWG NO.
Pierce Pumper Approval Drawing	Methuen Fire Department	36877AD

DRAWN BY	CHECKED BY	SHEET SIZE	SHEET NO.
MMF	THS	D	1 OF 1