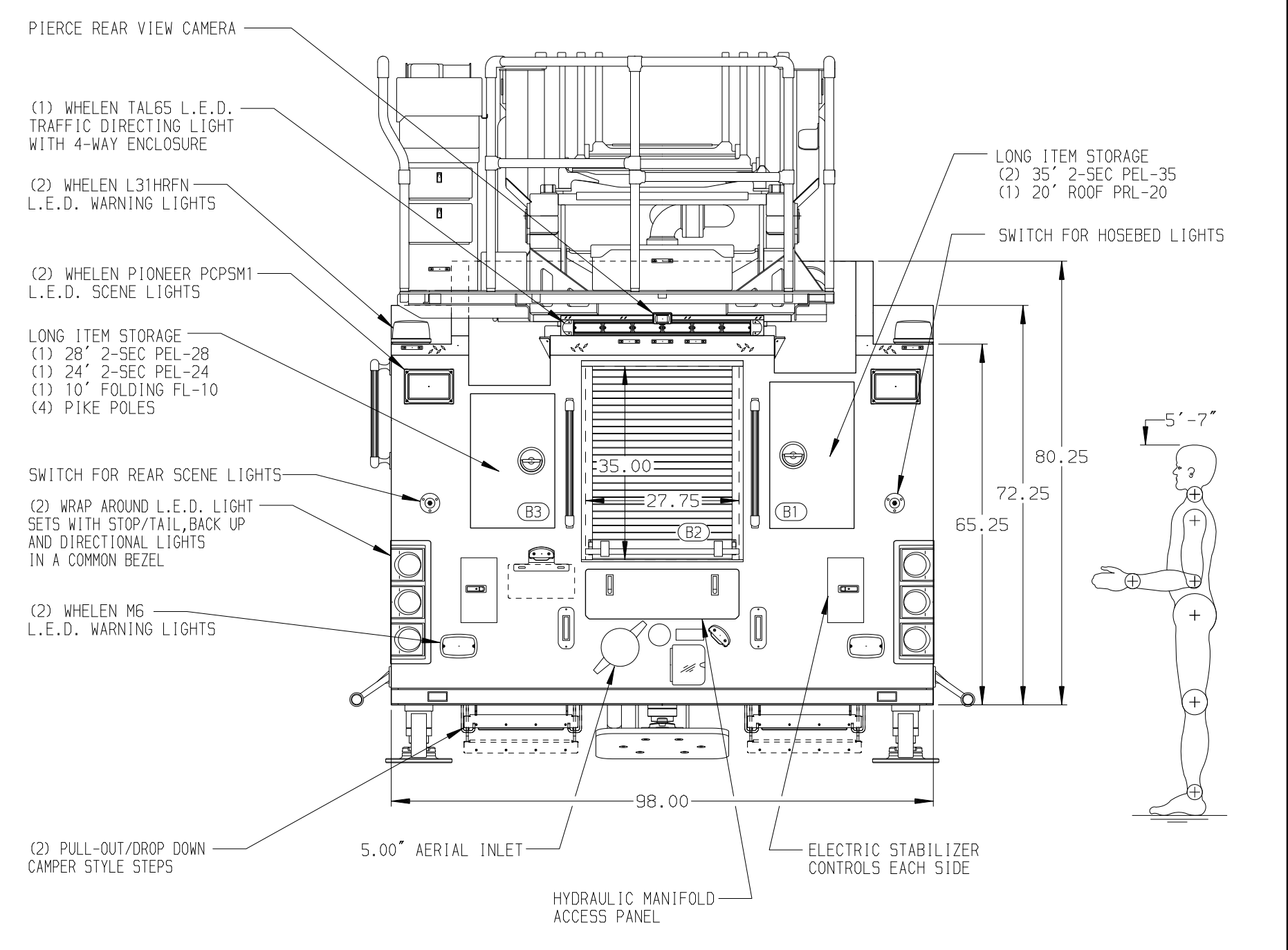
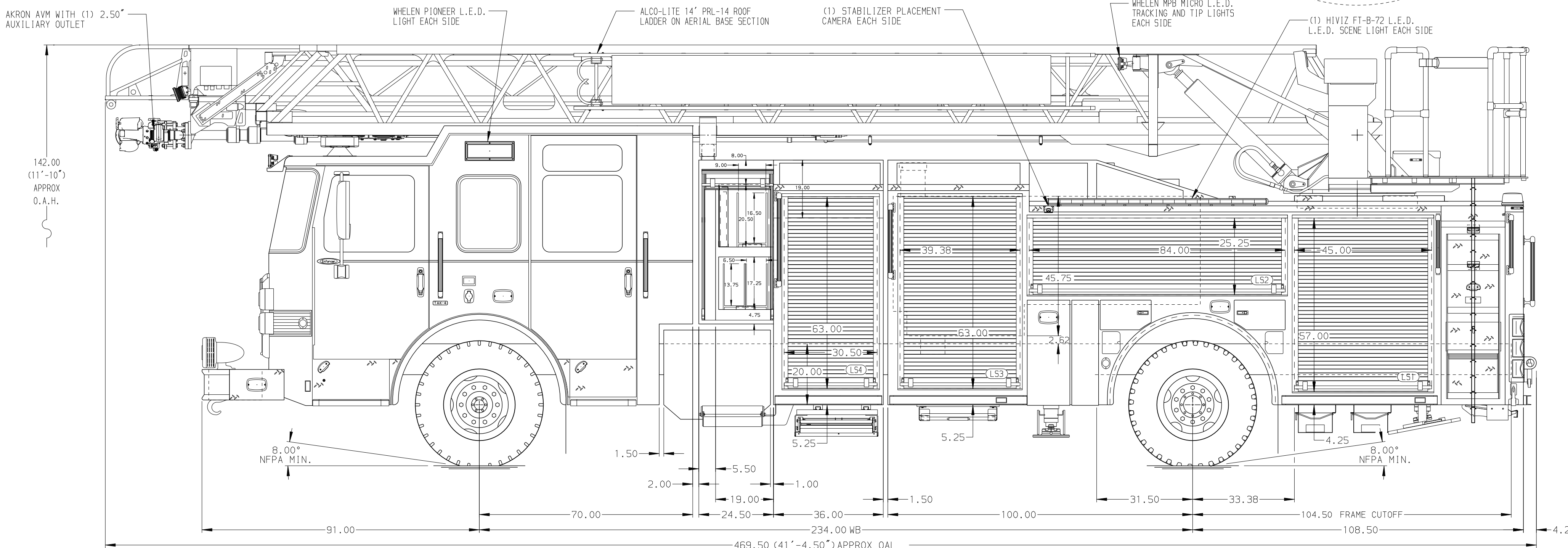
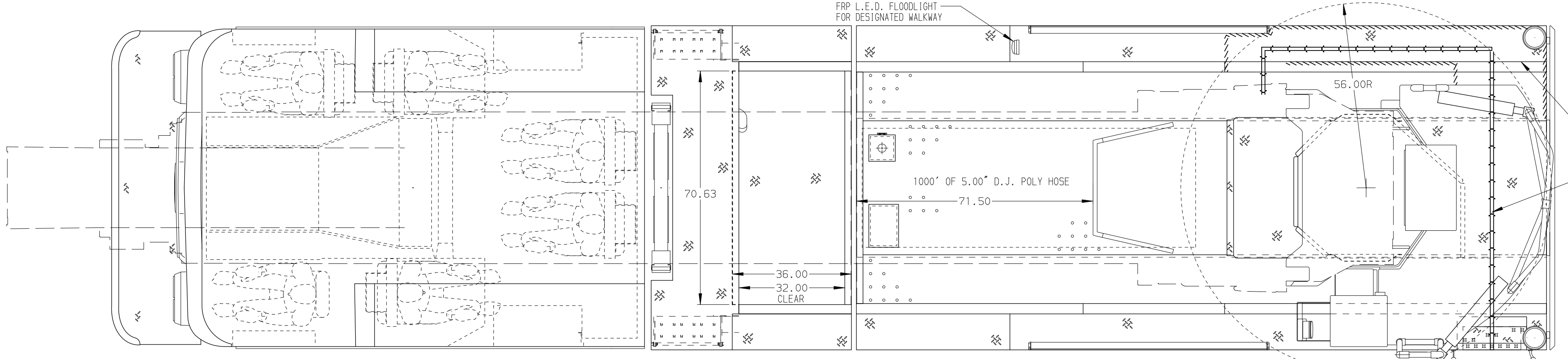


<b>BODY</b> 107' ASL Aluminum Body PUC <b>COMPT, DRIVER SIDE FRONT</b> Full Height RollUp Forward <b>COMPT, DRIVER SIDE REAR</b> Full Height RollUp Rearward <b>COMPT, PASSENGER SIDE FRONT</b> Full Height RollUp Forward <b>COMPT, PASSENGER SIDE REAR</b> Full Height RollUp Rearward	<b>WATER TANK</b> 500 Gallon Poly Water Tank <b>Foam System</b> Husky 3 Foam System <b>Foam Cell</b> 20 Gallon Foam Cell, Non-Reduced Water, PUC
---	---



<b>CHASSIS</b> Enforcer Chassis, PUC <b>ENGINE</b> 500 HP Cummins X12 Engine	<b>CAB</b> 7010 Notched Enforcer Cab, PUC <b>BUMPER</b> 22\"/>	<b>AXLE, FRONT, CUSTOM</b> 22,800 Lb TAK-4 Axle <b>AXLE, REAR</b> 33,500 Lb Meritor Axle	<b>TRANSMISSION</b> Allison 5th Gen, 4500 EVS P	<b>PUMPHOUSE</b> Control Zone, PAL/PAP PUC <b>PUMP</b> 1500 GPM Pierce PUC	<b>CROSSLAYS, 1.50"</b> (2) 1.50\", Full Width Trays, 200' <b>CROSSLAYS, 2.50"</b> (1) 2.50\", Full Width Tray, 200'	<b>SPEEDLAYS</b> Speedlays Not Required <b>GENERATOR</b> Generator Not Required	<b>SAFETY</b> Side Roll and Frontal Impact Protection	<b>CUSTOMER APPROVAL</b> APPROVED BY: _____ DATE: _____		JOB NO. 36731 SCALE 1:24 DATE _____ DRAWN BY TKA 28MAY21 CHECKED BY THS 28MAY21 SHEET SIZE D SHEET NO. 1 OF 1	
<b>NOTE</b> DIMENSIONS SHOWN ARE APPROXIMATE AND ARE SUBJECT TO MINOR DEVIATIONS AS MAY OCCUR OR BE NECESSARY IN CONSTRUCTION. MINOR DETAILS NOT SHOWN.		1. ONE 1.50 OUTLET WITH 2.00 PIPING AND SWIVEL LOCATED IN CENTER BUMPER TRAY 2. SHORELINE RECEPTACLE WITH KUSSMAUL SUPER AUTO-EJECT LOCATED ON DRIVER SIDE OF THE CAB 3. AIR INLET WITH DISCONNECT COUPLING IN THE DRIVER SIDE STEPWELL 4. BATTERY CHARGER LOCATED BEHIND DRIVER'S SEAT 5. BATTERY CHARGE INDICATOR LOCATED ON DRIVER SIDE OF THE CAB 6. DUAL L.E.D. LIGHT STRIPS LOCATED IN HOSE BED 7. SIX ADJUSTABLE SHELVES IN COMPARTMENTS PER SHOP ORDER 8. FOUR FLOOR MOUNTED SLIDE-OUT TRAYS IN COMPARTMENTS PER SHOP ORDER 9. NON-RAISED AERIAL PEDESTAL	10. LIFTING EYE ROPE RESCUE ATTACHMENT AT AERIAL 11. 1500 GPM HIGH FLOW WATERWAY 12. NO LIMITED RETRACTION								
CHASSIS DATA MAKE PIERCE MODEL ENFORCER		TITLE 107' ASCENDANT AERIAL LADDER AND BODY ASSEMBLY		FOR PIERCE FIELD UNIT APPLETON, WISCONSIN		DWG NO. 36731AD					