

**PUMPER BODY**

Long Aluminum 2nd Gen Pumper

**CHASSIS**

Enforcer Chassis

**CHASSIS AXLE, FRONT, CUSTOM**

19,500 Lb TAK-4 Axle

**AXLE, REAR**

27,000 Lb Meritor Axle

**ENGINE**

380 HP Cummins L9 Engine

**TRANSMISSION**

Allison 5th Gen, 3000 EVS P

**BUMPER**

19" Extended Painted Steel

**CAB**

7010 Enforcer Cab

**BODY**

**WATER TANK**

750 Gallon Poly Water Tank

**COMPT, PUMPER, REAR**

51.25" FF RollUp Rear Compt

**COMPT, PUMPER, LEFT SIDE**

161" RollUp Full Height & Depth Front & Rear

**COMPT, PUMPER, RIGHT SIDE**

161" RollUp Full Height Front & Rear FDLER

**FIRE SUPPRESSION PUMPHOUSE**

42" Control Zone Top Mount

**PUMP**

1500 GPM Hale QMAX

**CROSSLAYS, 1.50"**

1.50" Crosslays Not Required

**CROSSLAYS, 2.50"**

2.50" Crosslay Not Required

**SPEEDLAYS**

(2) 1.50", (1) 2.50" w/Tray Std. Capacity

**GENERATOR**

Not Required

**Foam System**

Husky 12 Single Agent Foam System

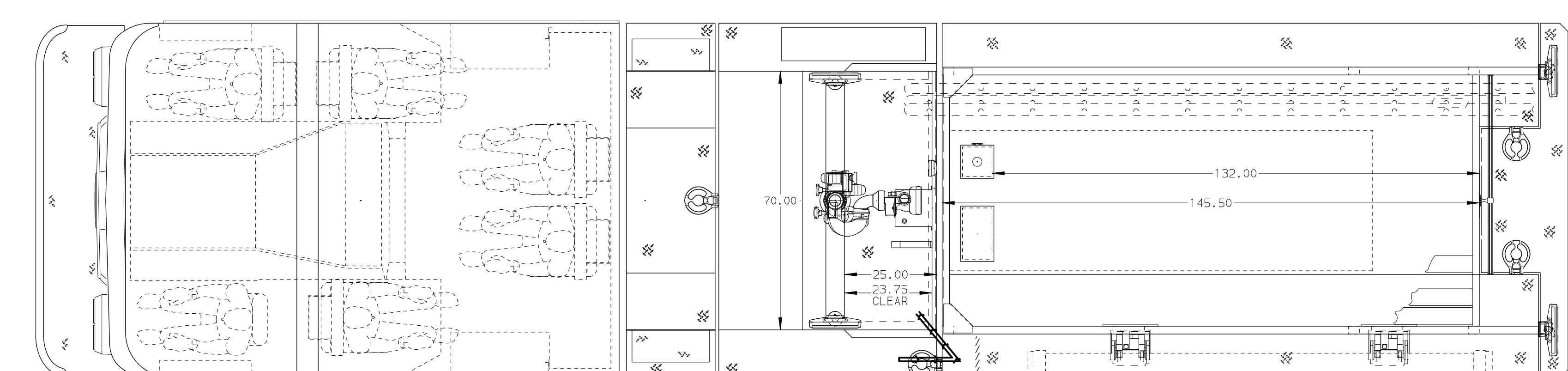
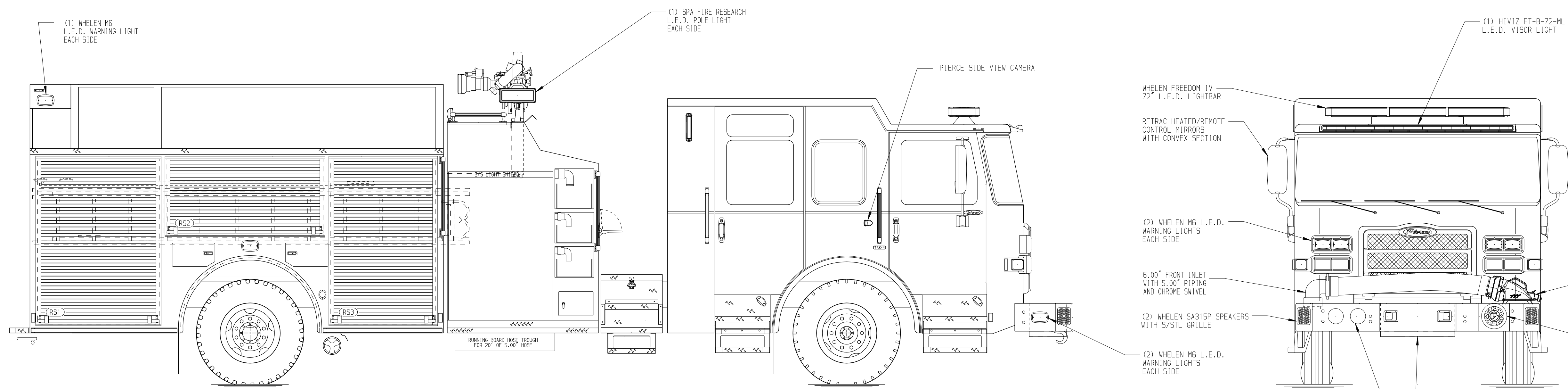
**Foam Cell**

25 Gallon Foam Cell, Not Reduced Water

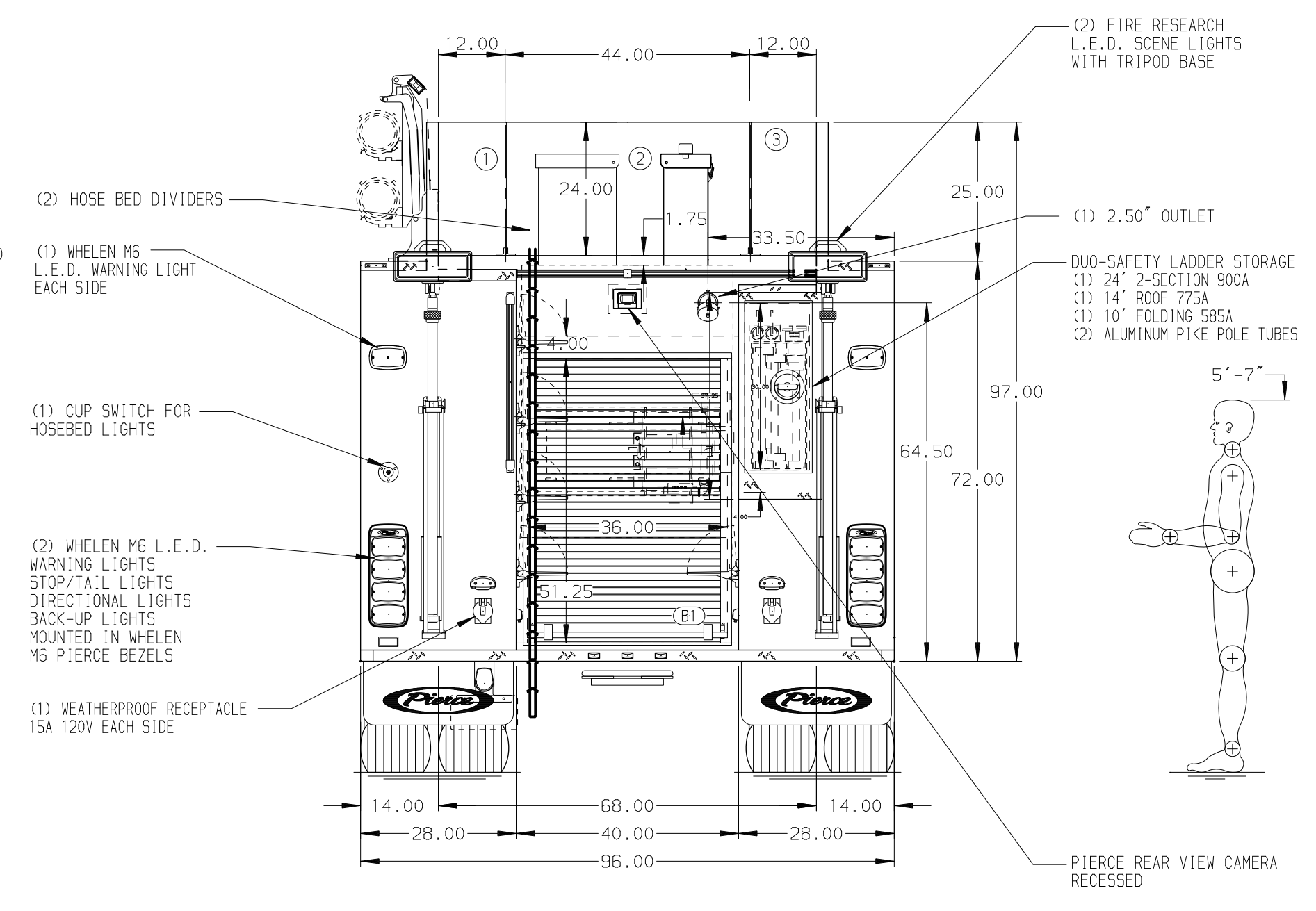
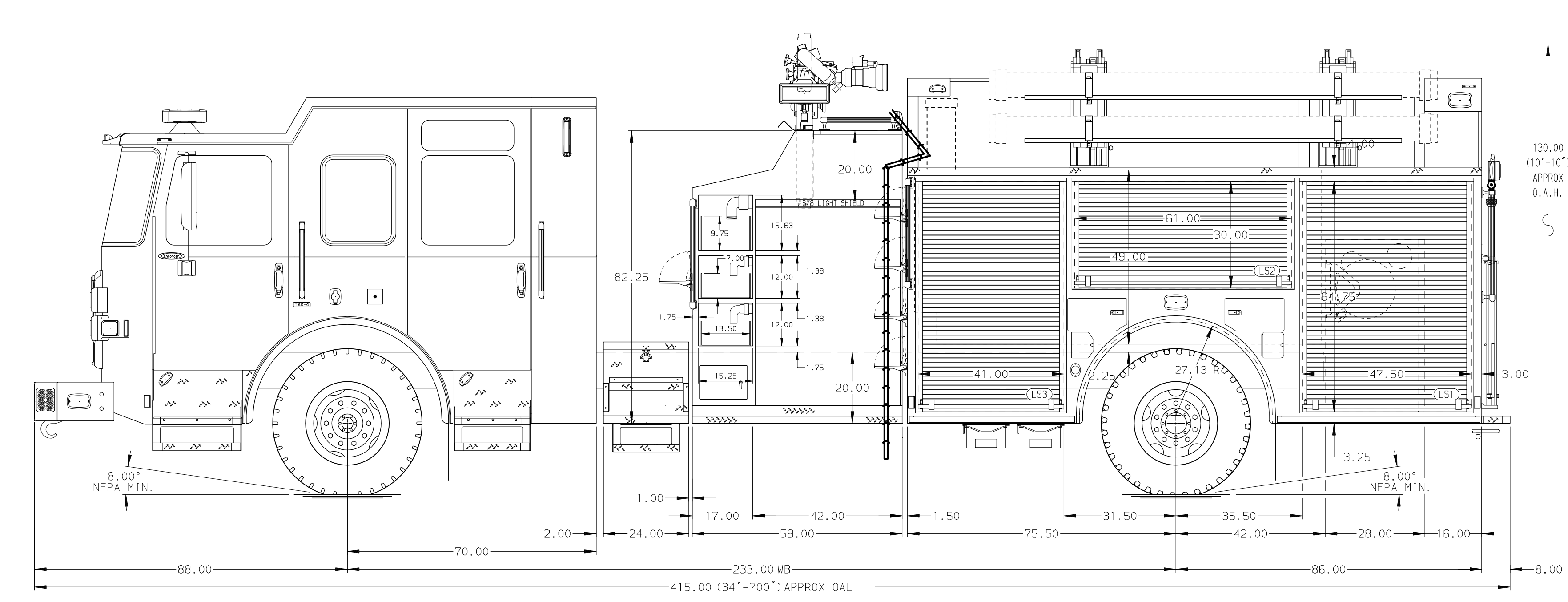
Side Roll and Frontal Impact Protection

**NOTE**  
DIMENSIONS SHOWN ARE APPROXIMATE AND ARE SUBJECT TO MINOR DEVIATIONS AS MAY OCCUR OR BE NECESSARY IN CONSTRUCTION. MINOR DETAILS NOT SHOWN.

1. SHORELINE RECEPTACLE WITH KUSSMAUL SUPER AUTO-EJECT LOCATED ON DRIVER SIDE OF THE CAB
2. AIR INLET WITH DISCONNECT COUPLING RECESSED DRIVER SIDE OF CAB
3. BATTERY CHARGER LOCATED IN COMPARTMENT PER SHOP ORDER
4. BATTERY CHARGE INDICATOR LOCATED ON THE DRIVER SIDE SEAT RISER
5. THREE ADJUSTABLE SHELVES IN COMPARTMENTS PER SHOP ORDER
6. SIX FLOOR MOUNTED SLIDE-OUT TRAYS IN COMPARTMENT PER SHOP ORDER
7. FOUR SLIDE-OUT TRAYS LOCATED IN COMPARTMENT PER SHOP ORDER
8. TWO TILT/SLIDE-OUT TRAYS LOCATED IN COMPARTMENT PER SHOP ORDER
9. ONE SWING-OUT TOOLBOARD IN COMPARTMENT PER SHOP ORDER
10. ONE HANNAY CORD REEL (E1616-17-18) WITH 200' OF 10/3 CABLE LOCATED IN COMPARTMENT B1



HOSEBED CAPACITY	
<b>BED 1</b>	300' OF 3.00" D.J. POLY HOSE
<b>BED 2</b>	1000' OF 5.00" D.J. POLY HOSE
<b>BED 3</b>	300' OF 3.00" D.J. POLY HOSE



<b>Pierce MANUFACTURING INC.</b>		JOB NO.	36389
		SCALE	DATE
		1:24	
TITLE		Pierce Pumper Approval Drawing	
FOR		Thomson Fire Protection District	
DRAWN BY		MMF	10MAR21
CHECKED BY		COL	11MAR21
DWG NO.		36389AD	SHEET NO.
			1 OF 1

REV	DATE	BY	CH	ENFORCER
16JUL21	MMF	ZWE	MAKE	
01JUN21	MMF	ZWE	PIERCE	
18MAY21	MMF	ZWE	MODEL	