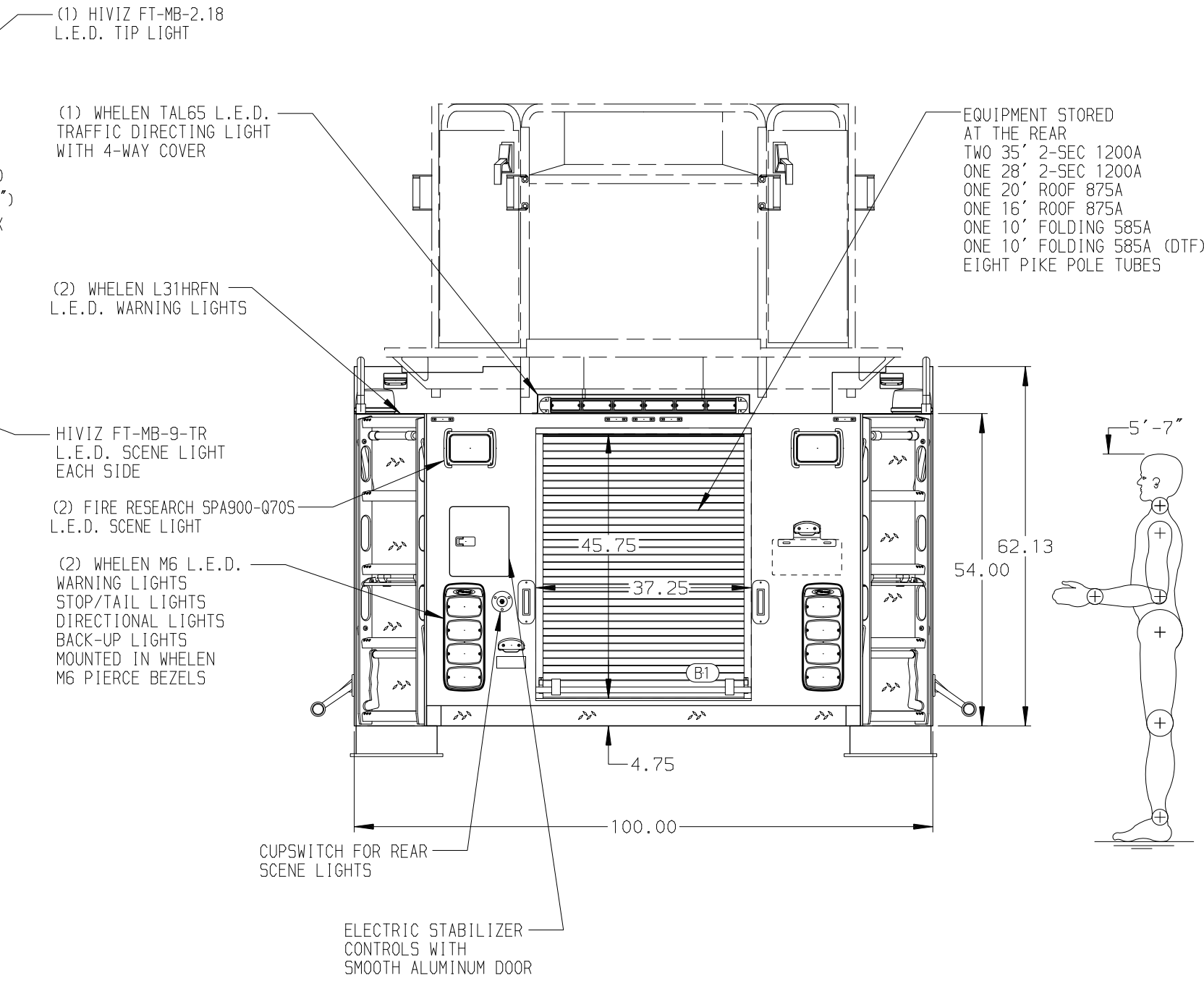
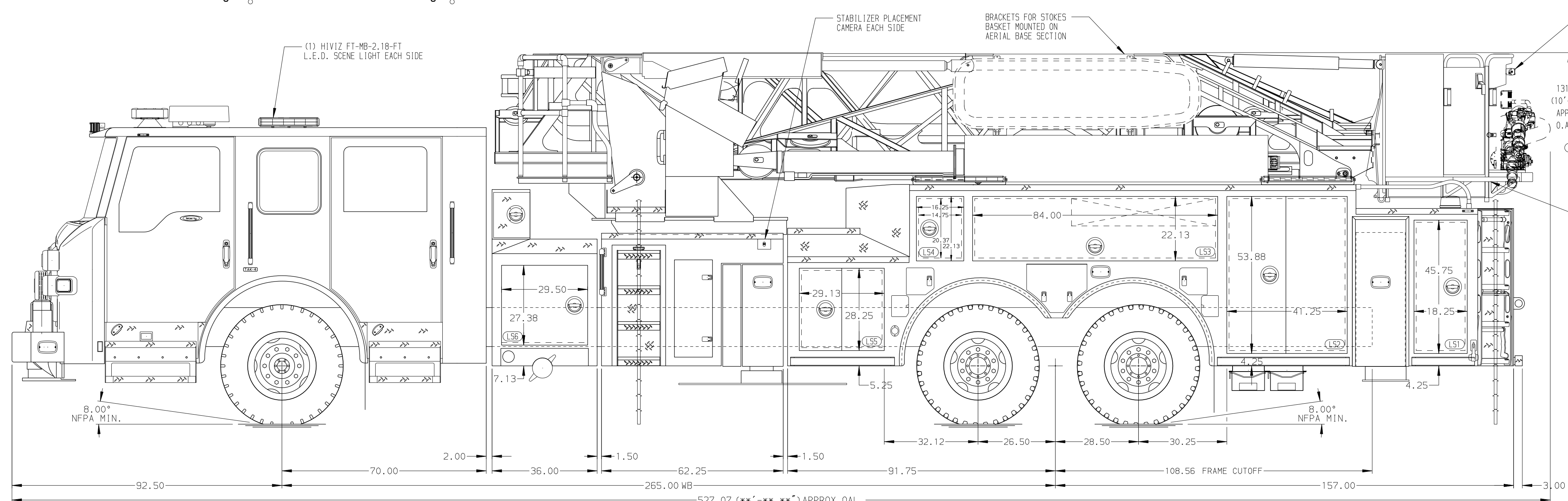


<b>BODY</b> 100' Ascendant Aerial Tower No Pump Alum Body <b>COMPT, LEFT SIDE</b> Full Height Lap Doors <b>COMPT, RIGHT SIDE</b> Full Height Lap Doors	<b>WATER TANK</b> Water Tank Not Required <b>Foam System</b> Foam System Not Required <b>Foam Cell</b> Foam Cell Not Required
---	--



<b>CHASSIS</b> Velocity Chassis (Big Block) <b>ENGINE</b> 525 HP DD13 Engine	<b>CAB</b> 7000 Velocity FR Cab <b>BUMPER</b> 15\"/>
---	---

<b>AXLE, FRONT, CUSTOM</b> 24,000 Lb TAK-4 Axle <b>AXLE, REAR</b> 52,000 Lb Meritor Axle	<b>TRANSMISSION</b> Allison 5th Gen, 4000 EVS P	<b>PUMPHOUSE</b> 36\"/>
---	--	----------------------------

<b>CROSSLAYS, 1.50"</b> 1.50\"/>
-------------------------------------

<b>SPEEDLAYS</b> Speedlays Not Required <b>GENERATOR</b> Generator Not Required	<b>PIERCE MANUFACTURING INC.</b>	JOB NO. 36352
	TITLE 100' ASCENDANT AERIAL TOWER AND BODY ASSEMBLY	SCALE 1:24
	FOR PENSACOLA FIRE DEPARTMENT PENSACOLA, FLORIDA	DATE 06MAY21
	DWG NO. 36352AD	CHECKED BY NDA
	REV 09AUG21 TKA ZWE	DATE 07MAY21
	REV 04JUN21 TKA ZWE	SHEET NO. 1 OF 1

**NOTE**  
DIMENSIONS SHOWN ARE APPROXIMATE AND ARE SUBJECT TO MINOR DEVIATIONS AS MAY OCCUR OR BE NECESSARY IN CONSTRUCTION. MINOR DETAILS NOT SHOWN.

- 120V SHORELINE RECEPTACLE LOCATED ON THE DRIVER SIDE SEAT RISER
- AIR INLET WITH DISCONNECT COUPLING LOCATED ON THE DRIVER SIDE SEAT RISER
- BATTERY CHARGER LOCATED BEHIND DRIVER'S SEAT
- BATTERY CHARGER INDICATOR LOCATED AT DRIVER'S SIDE STEP AREA
- EIGHT ADJUSTABLE FULL WIDTH/FULL DEPTH SHELVES IN COMPARTMENTS PER SHOP ORDER
- TWO INVERTED ADJUSTABLE FULL WIDTH/FULL DEPTH SHELVES IN COMPARTMENTS PER SHOP ORDER
- THREE ADJUSTABLE, TILTING SLIDE-OUT TRAYS IN COMPARTMENTS PER SHOP ORDER
- TWO FLOOR MOUNTED SLIDE-OUT TRAYS IN COMPARTMENTS PER SHOP ORDER
- ONE ADJUSTABLE TOOL BOARD MOUNTED TO SLIDE-OUT TRAY IN COMPARTMENT PER SHOP ORDER

- TWO VERTICAL PARTITIONS IN COMPARTMENTS PER SHOP ORDER
- 1.00\"/>