

PUMPER BODY

Medium Aluminum 2nd Gen Pumper

CHASSIS

Sober FR Chassis

CHASSIS AXLE, FRONT, CUSTOM

18,000 Lb Dana Axle

AXLE, REAR

24,000 Lb Dana Axle

ENGINE

450 HP Cummins L9 Engine

TRANSMISSION

Allison 5th Gen, 3000 EVS P

BUMPER

19" Extended Painted Steel

CAB

7010 Sober FR Cab

BODY WATER TANK

750 Gallon New York Style Water Tank

COMPT, PUMPER, REAR

37.75" FF RollUp Rear Compt

COMPT, PUMPER, LEFT SIDE

152" Lap Full Height Front & Rear FOLER

COMPT, PUMPER, RIGHT SIDE

152" Lap Full Height Front & Rear FOLER

FIRE SUPPRESSION PUMPHOUSE

45" Control Zone Side Mount

PUMP

1500 GPM Waterous CSU

CROSSLAYS, 1.50"

1.50" Crosslays Not Required

CROSSLAYS, 2.50"

2.50" Crosslay Not Required

SPEEDLAYS

(2) 1.50" W/Tray Std. Capacity

GENERATOR

Generator Not Required

Foam System

Foam System Not Required

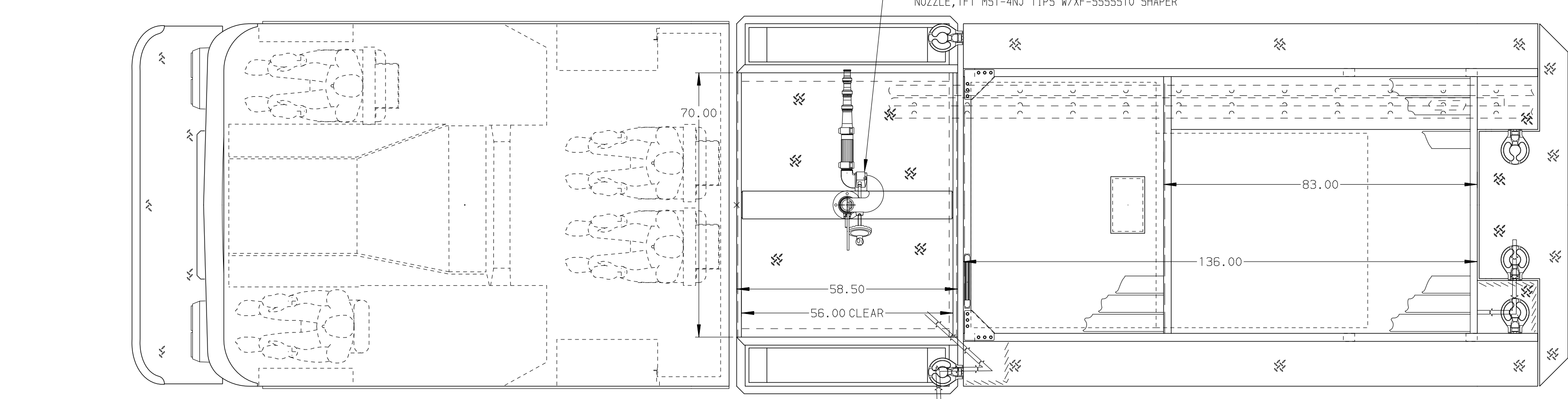
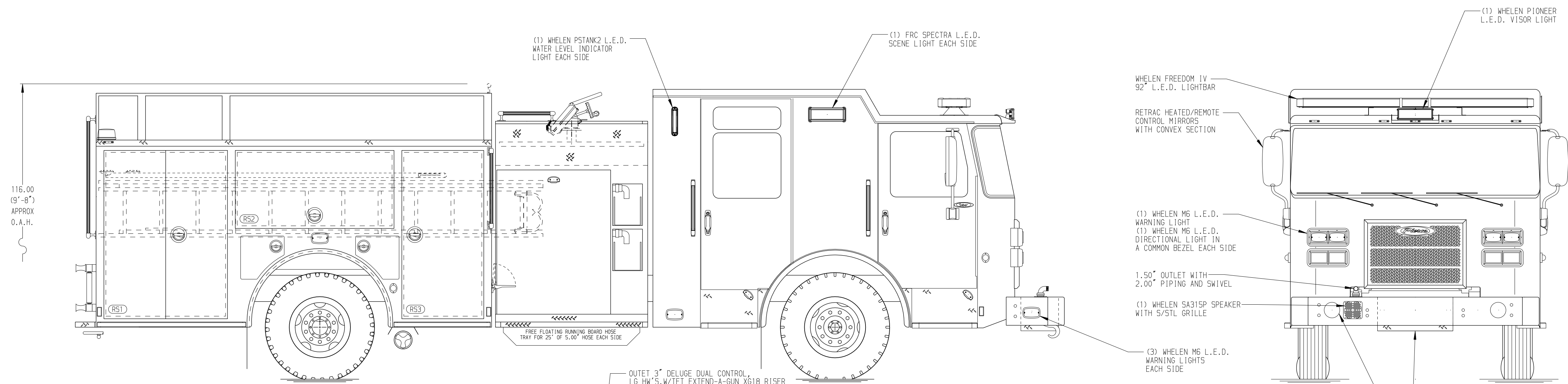
Foam Cell

Foam Cell Not Required

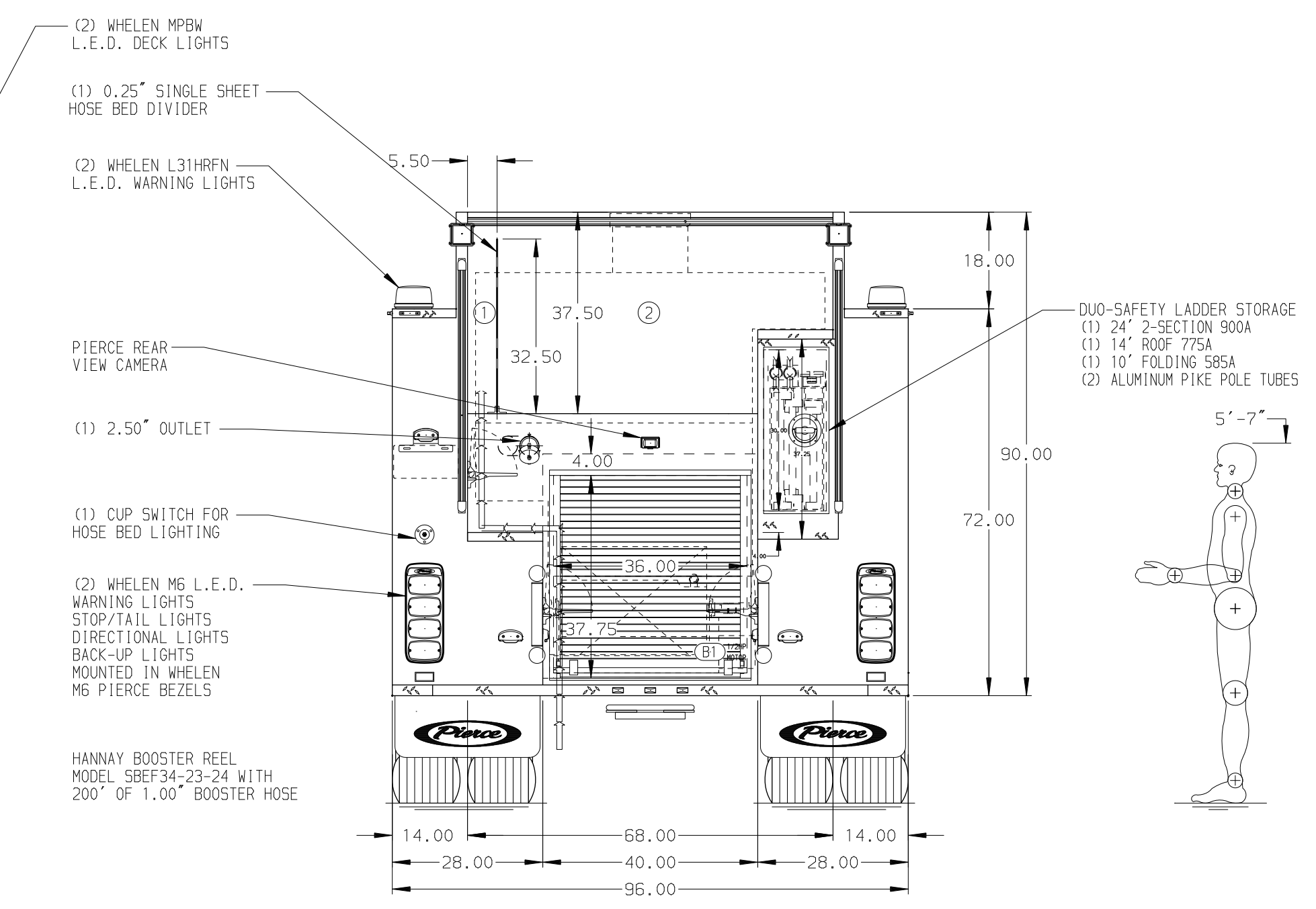
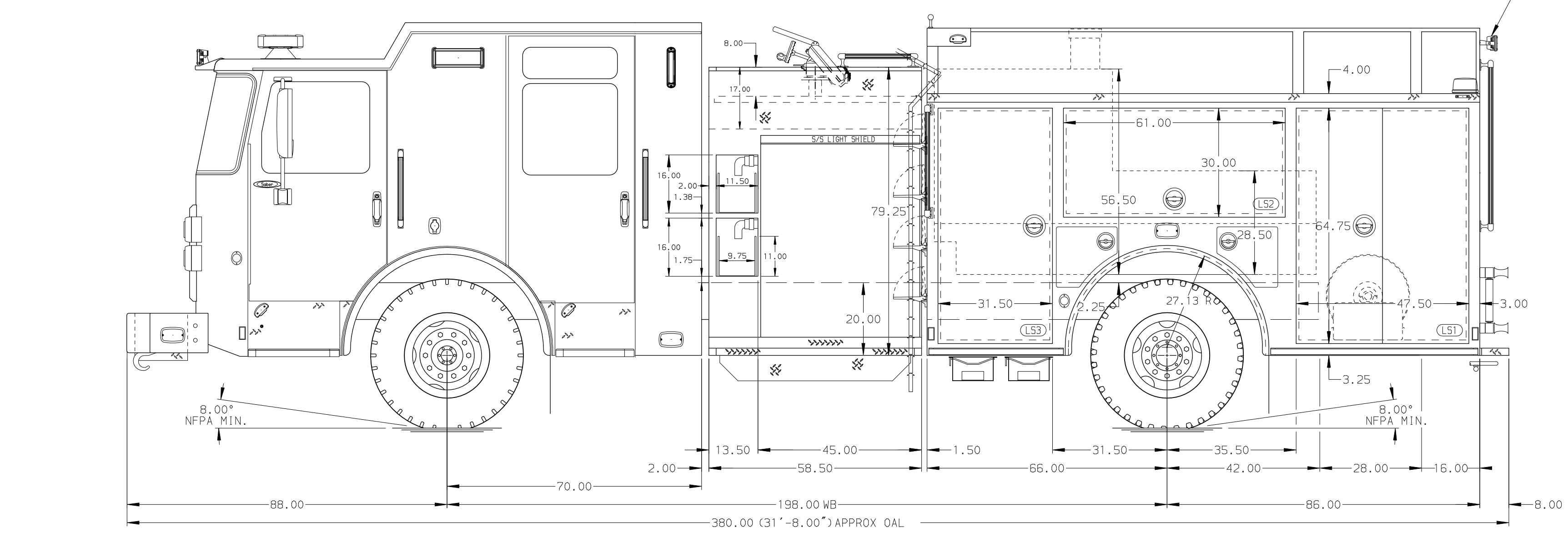
Side Roll and Frontal Impact Protection

NOTE

DIMENSIONS SHOWN ARE APPROXIMATE AND ARE SUBJECT TO MINOR DEVIATIONS AS MAY OCCUR OR BE NECESSARY IN CONSTRUCTION. MINOR DETAILS NOT SHOWN.



HOSEBED CAPACITY	
BED 1	200' OF 2.50" D.J. POLY HOSE
BED 2	1200' OF 4.00" D.J. POLY HOSE



Pierce MANUFACTURING INC.		JOB NO.	36319
		SCALE	DATE
		1:24	
TITLE		Pierce Pumper Approval Drawing	
FOR		Benton Fire Department	
DRAWN BY		MMF	01MAR21
CHECKED BY		-	-
SHEET SIZE		D	SHEET NO.
DWG NO.		36319AD	1 OF 1

REV	DATE	BY	CH	SABER FR
18MAY21	JAF	AJA		
30MAR21	JLA	AJA		