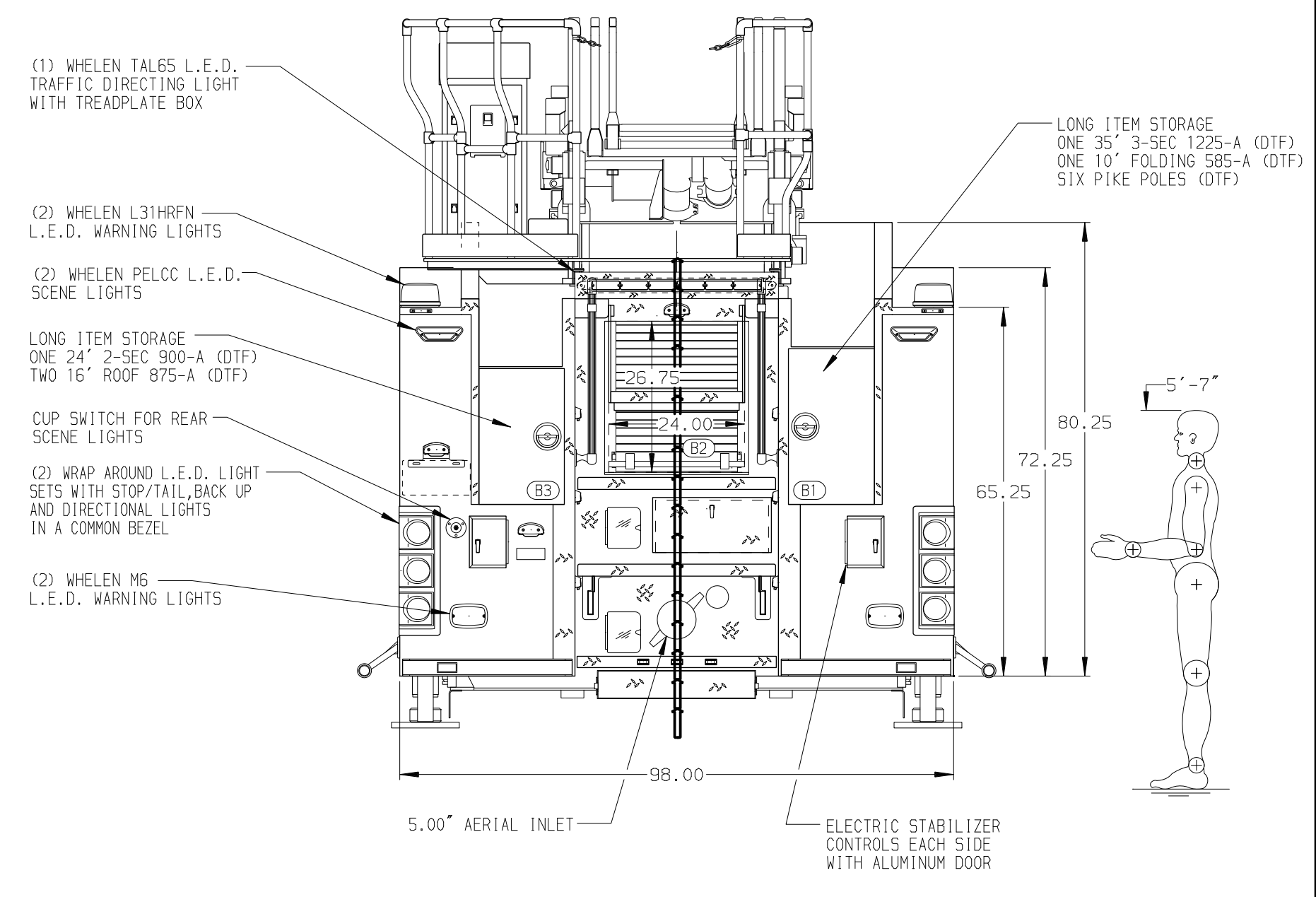
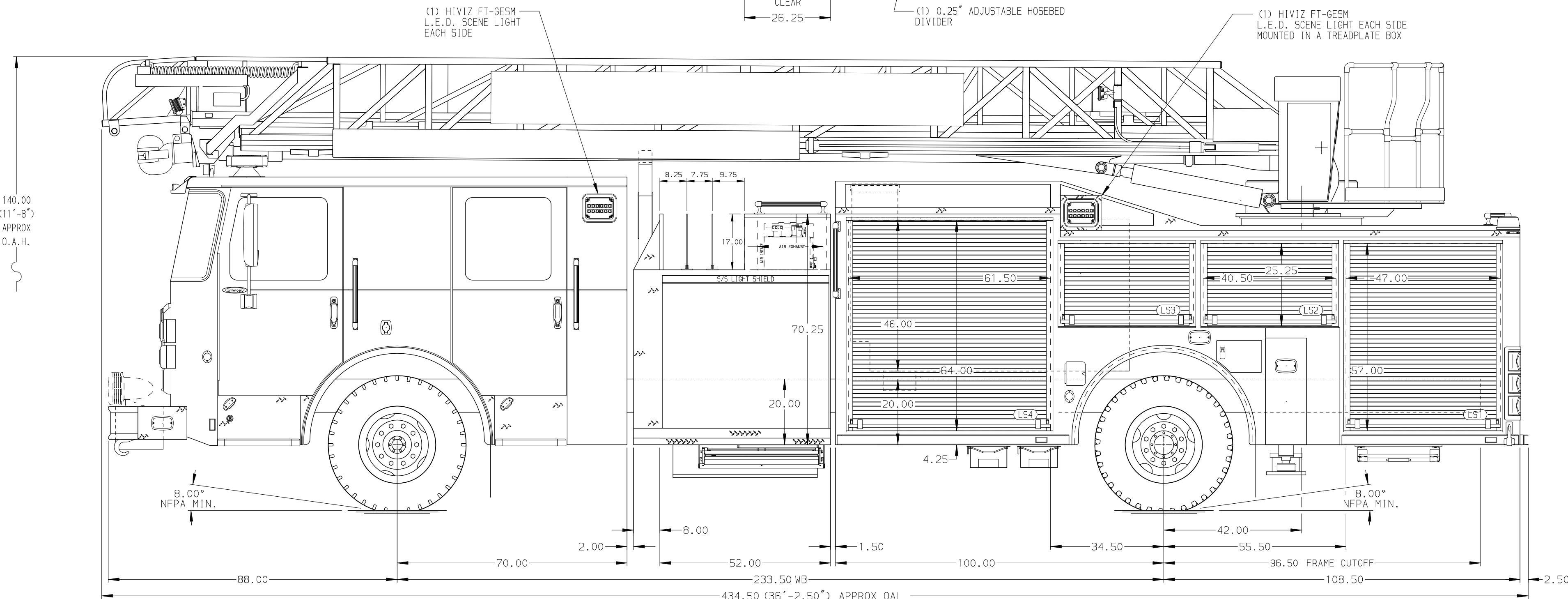
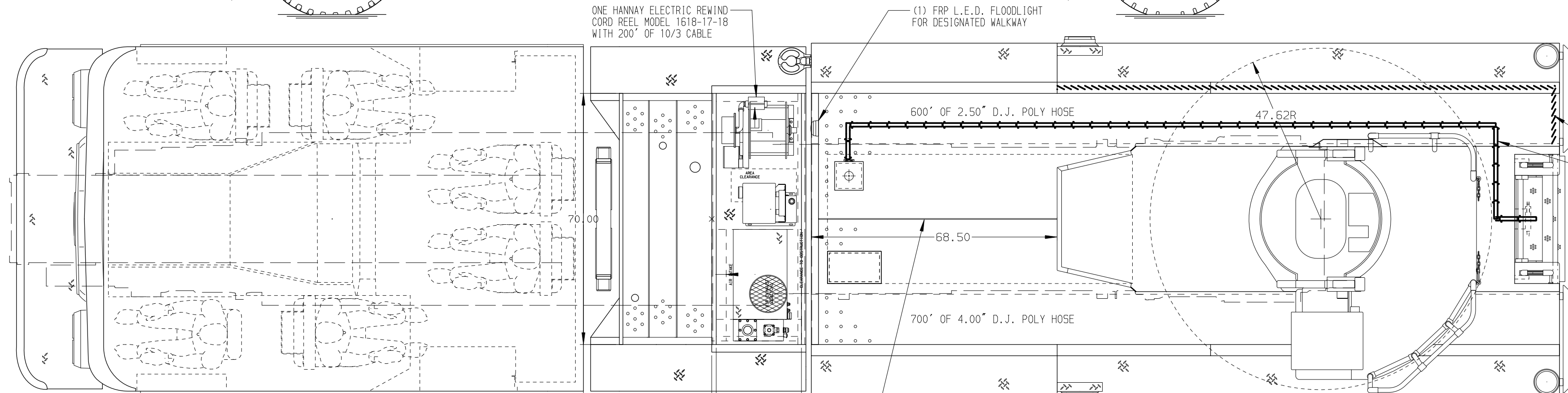


BODY	WATER TANK
75' HAL Aluminum Body	480 Gallon Poly Water Tank
COMPT, LEFT SIDE FRONT	Foam System
Full Height RollUp Forward	Husky 3 Single Agent Foam System
COMPT, LEFT SIDE REAR	Foam Cell
Full Height RollUp Rearward	20 Gallon Foam Cell, Reduced Water
COMPT, RIGHT SIDE FRONT	
Full Height RollUp Forward	
COMPT, RIGHT SIDE REAR	
Full Height RollUp Rearward	



<b>CHASSIS</b> Enforcer Chassis <b>ENGINE</b> 450 HP Cummins L9 Engine	<b>CAB</b> 7000 Enforcer Cab <b>BUMPER</b> 19" Extended Stainless Steel	<b>AXLE, FRONT, CUSTOM</b> 20,000 Lb Dana Axle <b>AXLE, REAR</b> 33,500 Lb Meritor Axle	<b>TRANSMISSION</b> Allison 5th Gen, 3000 EVS P	<b>PUMPHOUSE</b> 52" Control Zone Side Mount <b>PUMP</b> 2000 GPM Waterous CSU	<b>CROSSLAYS, 1.50"</b> (2) 1.50" Standard Capacity <b>CROSSLAYS, 2.50"</b> (1) 2.50" Standard Capacity	<b>SPEEDLAYS</b> Speedlays Not Required <b>GENERATOR</b> Harrison 6kW MSV Hydraulic
---	--	--	--	---	--	--

**NOTE**  
DIMENSIONS SHOWN ARE APPROXIMATE AND ARE SUBJECT TO MINOR DEVIATIONS AS MAY OCCUR OR BE NECESSARY IN CONSTRUCTION. MINOR DETAILS NOT SHOWN.

- ONE 1.50" OUTLET WITH 2.00" PIPING AND SWIVEL LOCATED IN CENTER BUMPER TRAY
- SHORELINE RECEPTACLE WITH KUSSMAUL SUPER AUTO-EJECT LOCATED ON DRIVER SIDE OF THE CAB
- AIR INLET WITH KUSSMAUL AIR-EJECT IN THE DRIVER SIDE STEPWELL
- BATTERY CHARGER LOCATED IN COMPARTMENT PER SHOP ORDER
- BATTERY CHARGE INDICATOR LOCATED ON THE DRIVER SIDE SEAT RISER
- DUAL L.E.D. LIGHT STRIPS LOCATED IN HOSE BED
- EIGHT ADJUSTABLE SHELVES IN COMPARTMENTS PER SHOP ORDER
- TWO FLOOR MOUNTED SLIDE-OUT TRAYS IN COMPARTMENTS PER SHOP ORDER
- CIRCUIT BREAKER PANEL LOCATED IN COMPARTMENT PER SHOP ORDER

- 1.50" RAISED AERIAL PEDESTAL
- LIFTING EYE RESCUE ATTACHMENT AT AERIAL TIP
- 1500 GPM HIGH FLOW WATERWAY
- LIMITED RETRACTION NOT REQUIRED

MAXIMUM OVERALL HEIGHT = 144.00" (12'-0")

MAXIMUM OVERALL LENGTH = 492.00" (41'-0")

REV	DATE	BY	CH	ENFORCER
1	11JUN21	TKA	JGO	PIERCE
2	14APR21	BST	JGO	MODEL

<b>Pierce MANUFACTURING INC.</b>		JOB NO.	36260
TITLE		SCALE	DATE
75 HAL AERIAL LADDER & BODY ASSEMBLY		1:24	16MAR21
FOR		CHECKED BY	DATE
CITY OF PROCTOR PROCTOR, MINNESOTA		NDA	16MAR21
DWG NO.		SHEET SIZE	SHEET NO.
36260AD		D	1 OF 1