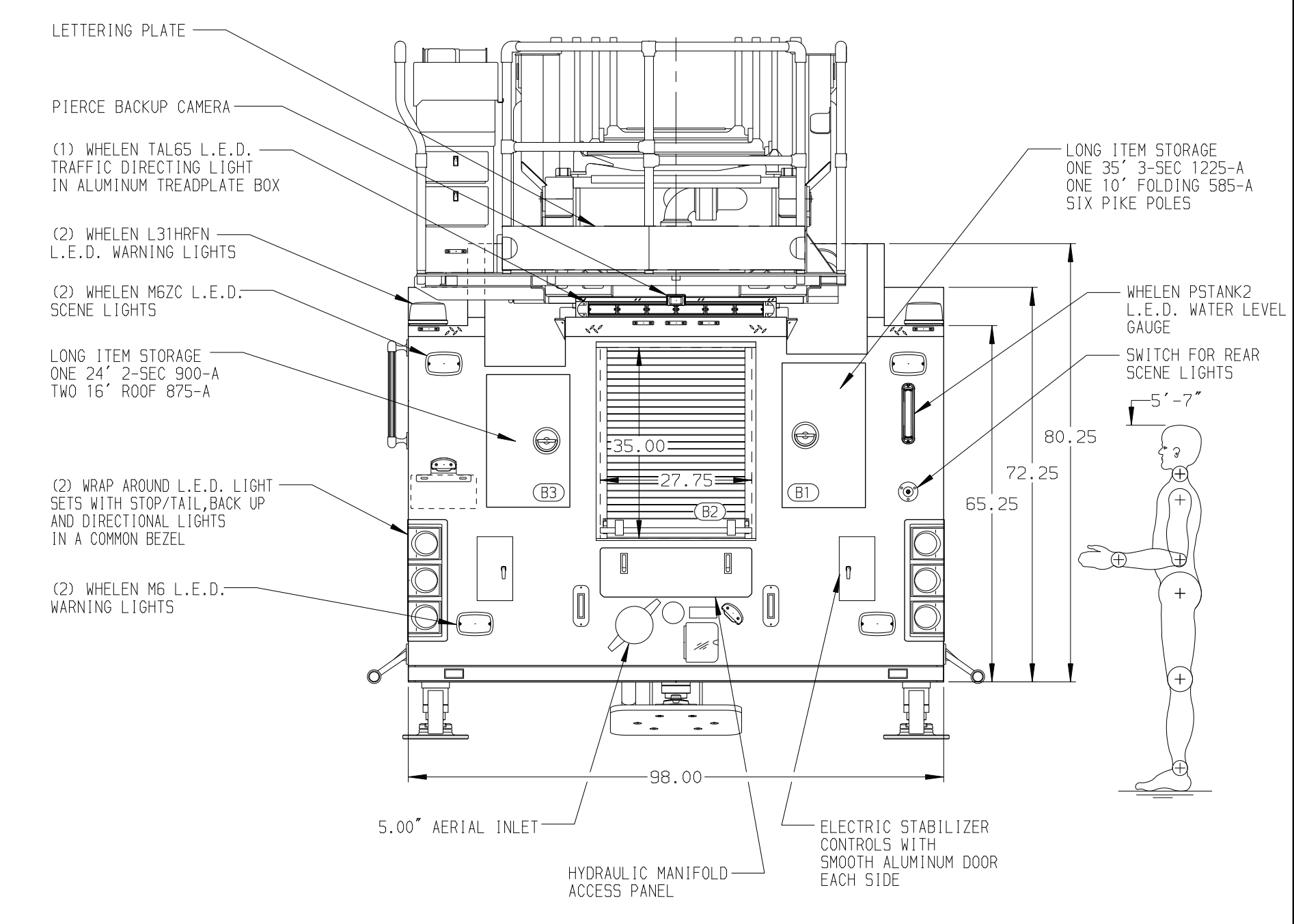
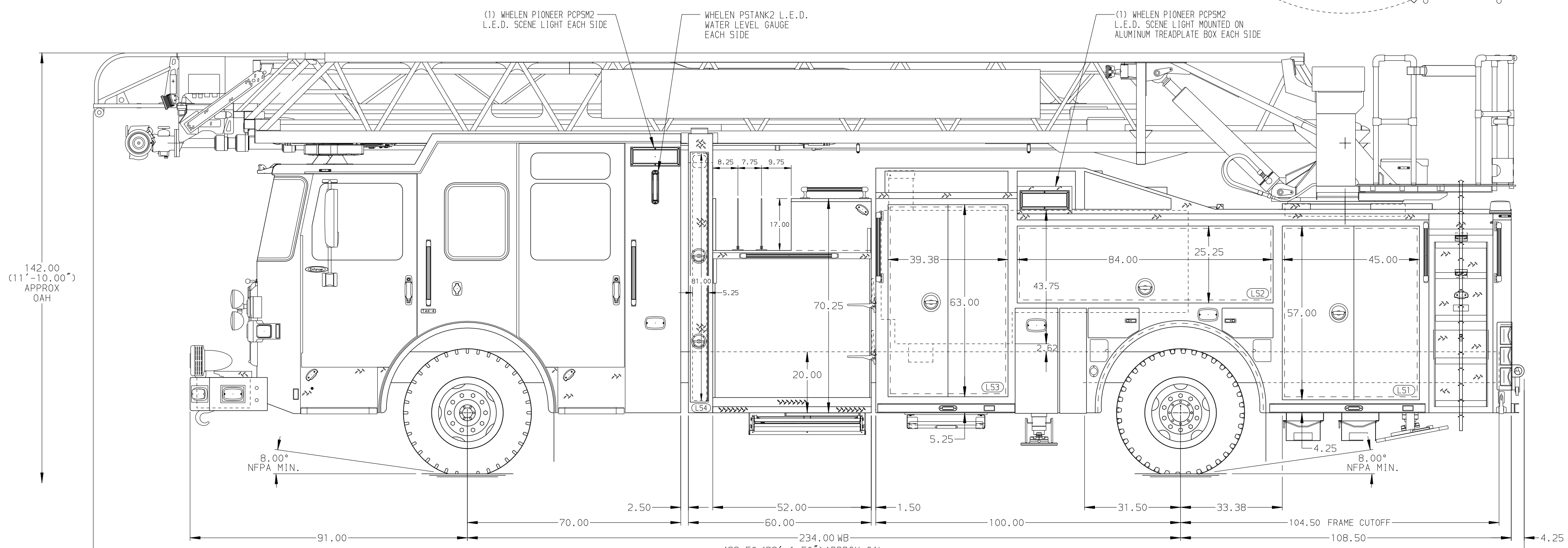


<p><b>BODY</b></p> <p>107' ASL Aluminum Body</p> <p>COMPT, LEFT SIDE FRONT</p> <p>Full Height Lap Forward</p> <p>COMPT, LEFT SIDE REAR</p> <p>Full Height Lap Rearward</p> <p>COMPT, RIGHT SIDE FRONT</p> <p>Full Height Lap Forward</p> <p>COMPT, RIGHT SIDE REAR</p> <p>Full Height Lap Rearward</p>	<p><b>WATER TANK</b></p> <p>500 Gallon Poly Water Tank</p> <p>Foam System</p> <p>Foam System Not Required</p> <p>Foam Cell</p> <p>Foam Cell Not Required</p>
--	--



<p><b>CHASSIS</b></p> <p>Enforcer Chassis</p> <p><b>ENGINE</b></p> <p>500 HP Cummins X12 Engine</p>	<p><b>CAB</b></p> <p>7010 Notched Enforcer Cab</p> <p><b>BUMPER</b></p> <p>22\" Extended Painted Steel</p>	<p><b>AXLE, FRONT, CUSTOM</b></p> <p>22,800 Lb TAK-4 Axle</p> <p><b>AXLE, REAR</b></p> <p>33,500 Lb Meritor Axle</p>	<p><b>TRANSMISSION</b></p> <p>Allison 5th Gen, 4000 EV5 P</p>	<p><b>PUMPHOUSE</b></p> <p>52\" Control Zone Side Mount</p> <p><b>PUMP</b></p> <p>1500 GPM HoLe QMAX-150</p>	<p><b>CROSSLAYS, 1.50\"</b></p> <p>(2) 1.50\" Standard Capacity</p> <p><b>CROSSLAYS, 2.50\"</b></p> <p>(1) 2.50\" Standard Capacity</p>	<p><b>SPEEDLAYS</b></p> <p>Speedlays Not Required</p> <p><b>GENERATOR</b></p> <p>Generator Not Required</p>	<p><b>SAFETY</b></p> <p>Side Roll and Frontal Impact Protection</p>
<p><b>NOTE</b></p> <p>DIMENSIONS SHOWN ARE APPROXIMATE AND ARE SUBJECT TO MINOR DEVIATIONS AS MAY OCCUR OR BE NECESSARY IN CONSTRUCTION. MINOR DETAILS NOT SHOWN.</p>							
<p>1. ONE 1.50\" OUTLET WITH 2.00\" PIPING AND SWIVEL LOCATED IN CENTER BUMPER TRAY</p> <p>2. SHORELINE RECEPTACLE WITH KUSSMALL SUPER AUTO-EJECT LOCATED ON DRIVER SIDE OF THE CAB</p> <p>3. AIR INLET WITH DISCONNECT COUPLING IN THE DRIVER SIDE STEPIWELL</p> <p>4. BATTERY CHARGER LOCATED IN COMPARTMENT PER SHOP ORDER</p> <p>5. BATTERY CHARGE INDICATOR LOCATED ON THE DRIVER SIDE SEAT RISER</p> <p>6. DUAL L.E.D. LIGHT STRIPS LOCATED IN HOSE BED</p> <p>7. SIX ADJUSTABLE SHELVES IN COMPARTMENTS PER SHOP ORDER</p> <p>8. TWO FLOOR MOUNTED SLIDE-OUT TRAYS IN COMPARTMENTS PER SHOP ORDER</p> <p>9. ONE SWING-OUT ALUMINUM TOOL BOARD IN COMPARTMENT PER SHOP ORDER</p> <p>10. ONE VERTICAL DIVIDER IN COMPARTMENT PER SHOP ORDER</p> <p>11. ALUMINUM PEGBOARD ON BACK WALL OF FOUR COMPARTMENTS PER SHOP ORDER</p>		<p>12. TWO 120V DUPLEX RECEPTACLES LOCATED IN CAB PER SHOP ORDER</p> <p>13. ONE 120V 6-PLACE DUPLEX RECEPTACLE LOCATED IN COMPARTMENT PER SHOP ORDER</p> <p>14. NON-RAISED AERIAL PEDESTAL</p> <p>15. LIFTING EYE ROPE RESCUE ATTACHMENT AT AERIAL TIP</p> <p>16. AIR HORN CONTROL AT AERIAL TURNTABLE</p> <p>17. 1500 GPM HIGH FLOW WATERWAY</p> <p>18. TRIDENT FOLDING STEPS ON AERIAL DEVICE</p> <p>19. 2-WAY INTERCOM SYSTEM BETWEEN AERIAL TIP AND TURNTABLE</p> <p>20. NO LIMITED RETRACTION ON AERIAL DEVICE</p> <p>21. TECNIO L.E.D. RING STYLE LIGHTING ON AERIAL LADDER SECTIONS PER SHOP ORDER</p>		<p>1. WHELEN PIONEER PCPSM2 L.E.D. SCENE LIGHT EACH SIDE</p> <p>WHELEN PSTANK2 L.E.D. WATER LEVEL GAUGE EACH SIDE</p> <p>(1) WHELEN PIONEER PCPSM2 L.E.D. SCENE LIGHT MOUNTED ON ALUMINUM TREADPLATE BOX EACH SIDE</p>			

<p><b>Pierce MANUFACTURING INC.</b></p>		<p>JOB NO. 36253</p> <p>SCALE 1:24</p> <p>DATE</p>
<p>TITLE</p> <p>107' ASCENDANT AERIAL LADDER AND BODY ASSEMBLY</p>	<p>DRAWN BY SHU</p> <p>14APR21</p>	<p>CHECKED BY NDA</p> <p>22APR21</p>
<p>FOR</p> <p>SNOW HILL FIRE DEPARTMENT</p> <p>SNOW HILL, NORTH CAROLINA</p>	<p>SHEET SIZE</p> <p>D</p>	<p>SHEET NO.</p> <p>1 OF 1</p>
<p>DWG NO.</p> <p>36253AD</p>		