

PUMPER BODY

Long Aluminum 2nd Gen Pumper

CHASSIS

Enforcer Chassis

CHASSIS AXLE, FRONT, CUSTOM

18,000 Lb Dana Axle

AXLE, REAR

27,000 Lb Dana Axle

ENGINE

450 HP Cummins L9 Engine

TRANSMISSION

Allison 5th Gen, 3000 EVS P

BUMPER

19" Extended Steel

CAB

7010 Enforcer Cab

BODY WATER TANK

1000 Gallon Poly Water Tank

COMPT, PUMPER, REAR

44.50" FF RollUp Rear Compt

COMPT, PUMPER, LEFT SIDE

161" Lap Full Height Front & Rear FOLER

COMPT, PUMPER, RIGHT SIDE

161" Lap Full Height Front & Rear FOLER

FIRE SUPPRESSION PUMPHOUSE

45" Control Zone Top Mount

PUMP

1500 GPM Waterous CSU

CROSSLAYS, 1.50"

(1) 1.50" CrossLay Std. Capacity

CROSSLAYS, 2.50"

(1) DeadLay Special Capacity

SPEEDLAYS

(2) 1.50" Std. Capacity

GENERATOR

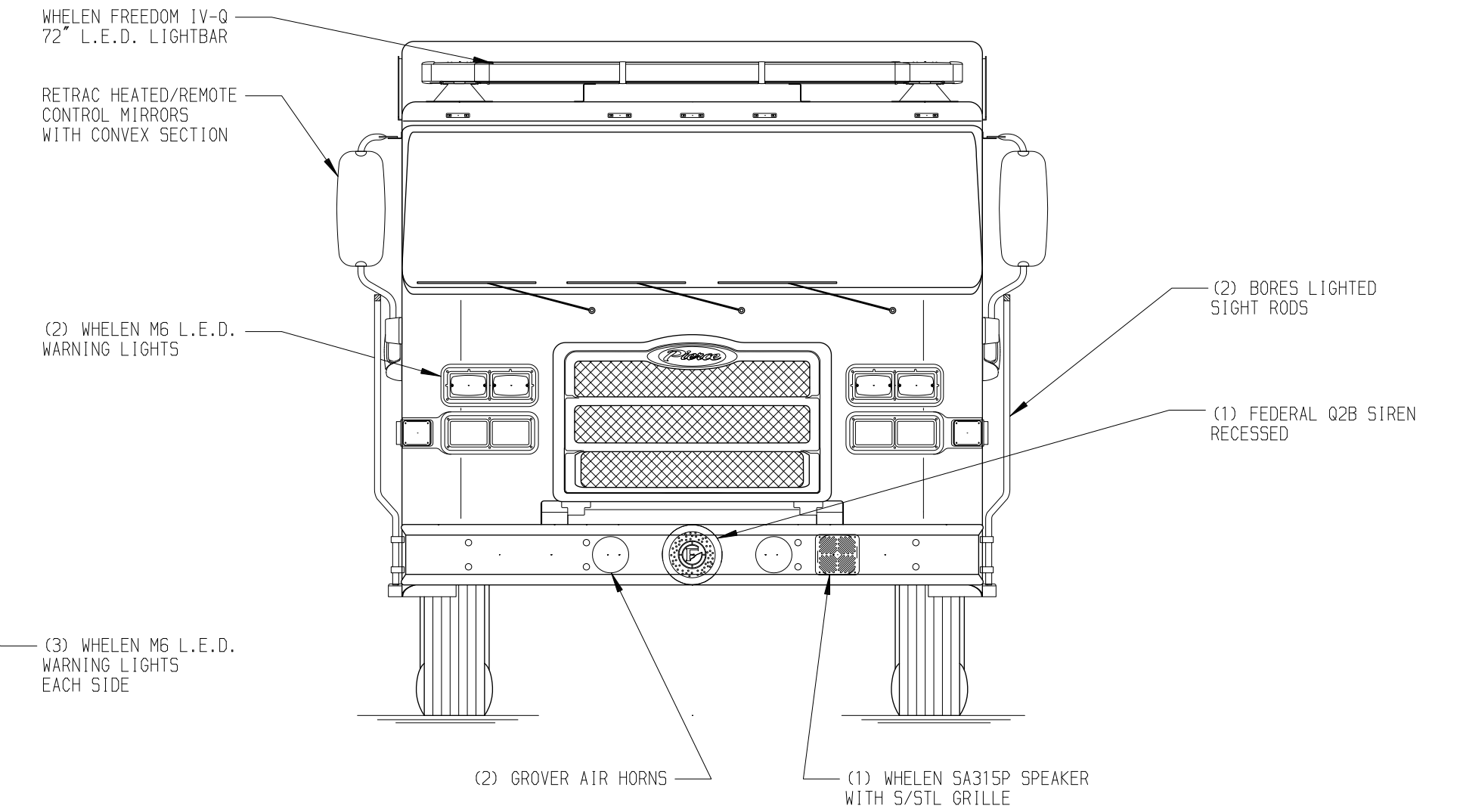
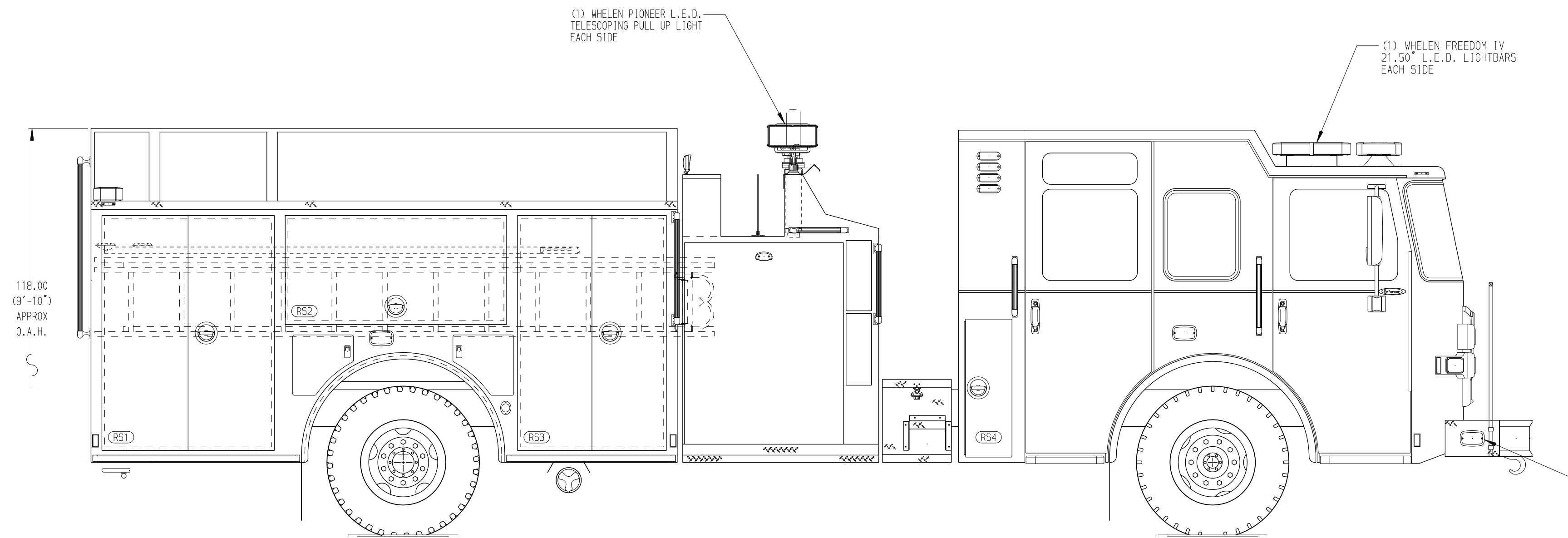
Generator Not Required

Foam System

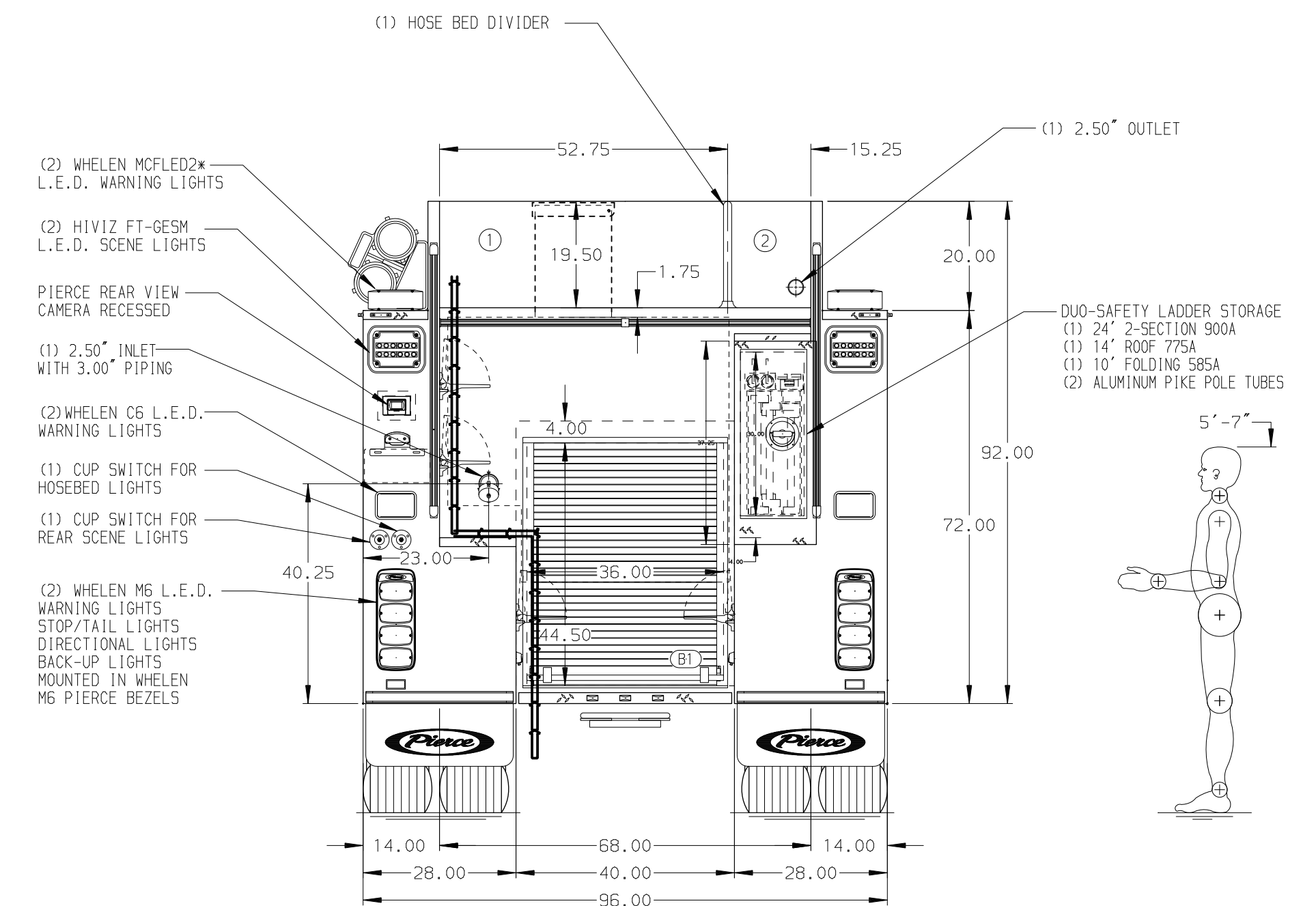
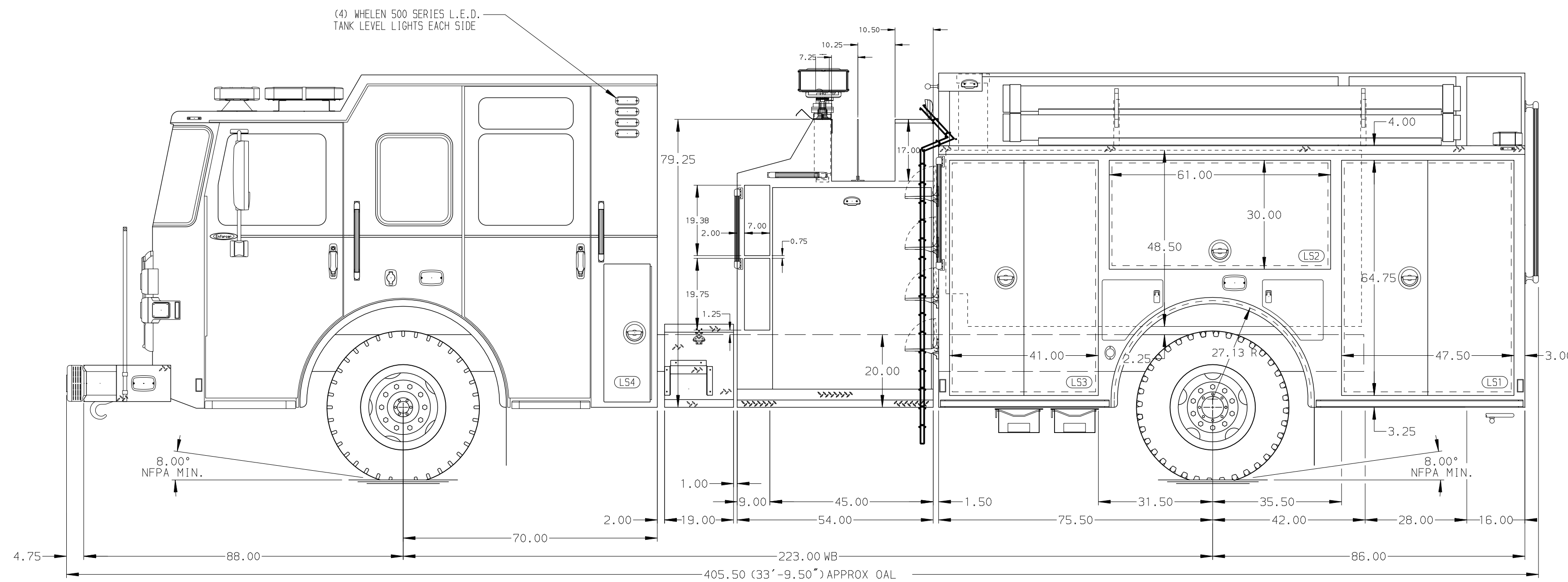
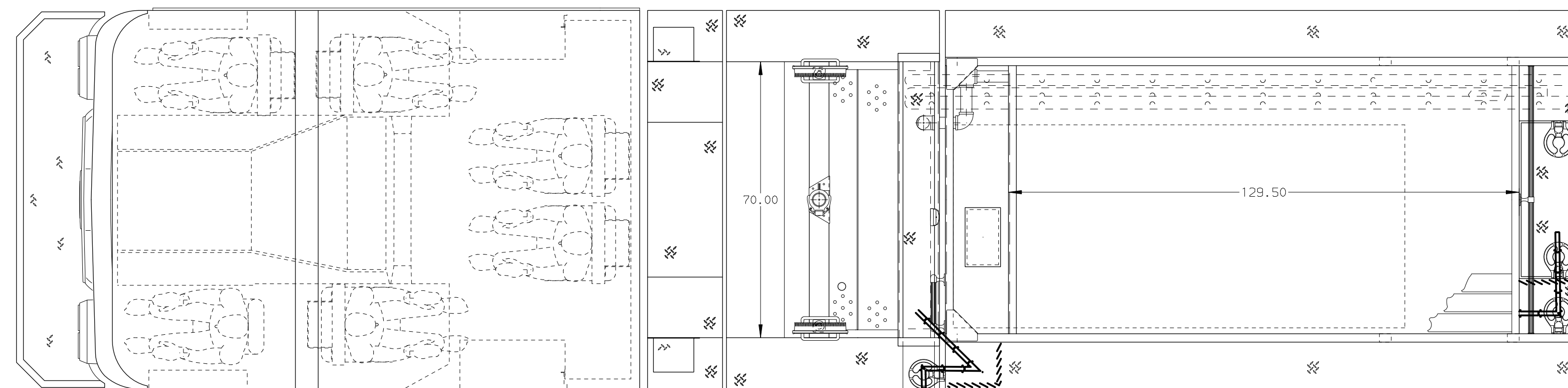
Foam System Not Required

Foam Cell

Foam Cell Not Required



HOSEBED CAPACITY	
BED 1	1000' OF 4.00" D.J. POLY HOSE
BED 2	200' OF 2.50" D.J. POLY HOSE



MAXIMUM O.A.H. 118.00"

NOTE
DIMENSIONS SHOWN ARE APPROXIMATE AND ARE SUBJECT TO MINOR DEVIATIONS AS MAY OCCUR OR BE NECESSARY IN CONSTRUCTION. MINOR DETAILS NOT SHOWN.

- SHORELINE RECEPTACLE WITH KUSSMAUL SUPER AUTO-EJECT LOCATED ON DRIVER SIDE OF THE CAB
- AIR INLET WITH DISCONNECT COUPLING IN THE DRIVER SIDE STEPMELL
- BATTERY CHARGER LOCATED IN COMPARTMENT PER SHOP ORDER
- BATTERY CHARGE INDICATOR LOCATED ON THE DRIVER SIDE SEAT RISER
- SIX ADJUSTABLE SHELVES LOCATED PER SHOP ORDER
- TWO FLOOR MOUNTED SLIDE-OUT TRAYS LOCATED PER SHOP ORDER
- ONE SLIDE-OUT TOOLBOARD LOCATED PER SHOP ORDER
- ONE SWING-OUT TOOLBOARD LOCATED PER SHOP ORDER

REV	DATE	BY	CH	ENFORCER
23JUL21	MMF	GKH	MAKE	
17MAY21	MMF	ZWE	PIERCE	
01APR21	MMF	ZWE	MODEL	

Pierce MANUFACTURING INC.		JOB NO.	36237
TITLE		SCALE	DATE
Pierce Pumper Approval Drawing		1:24	
FOR		DRAWN BY	06NOV20
Beverly VFC		CHECKED BY	17FEB21
DWG NO.		SHEET SIZE	SHEET NO.
36237AD		D	1 OF 1