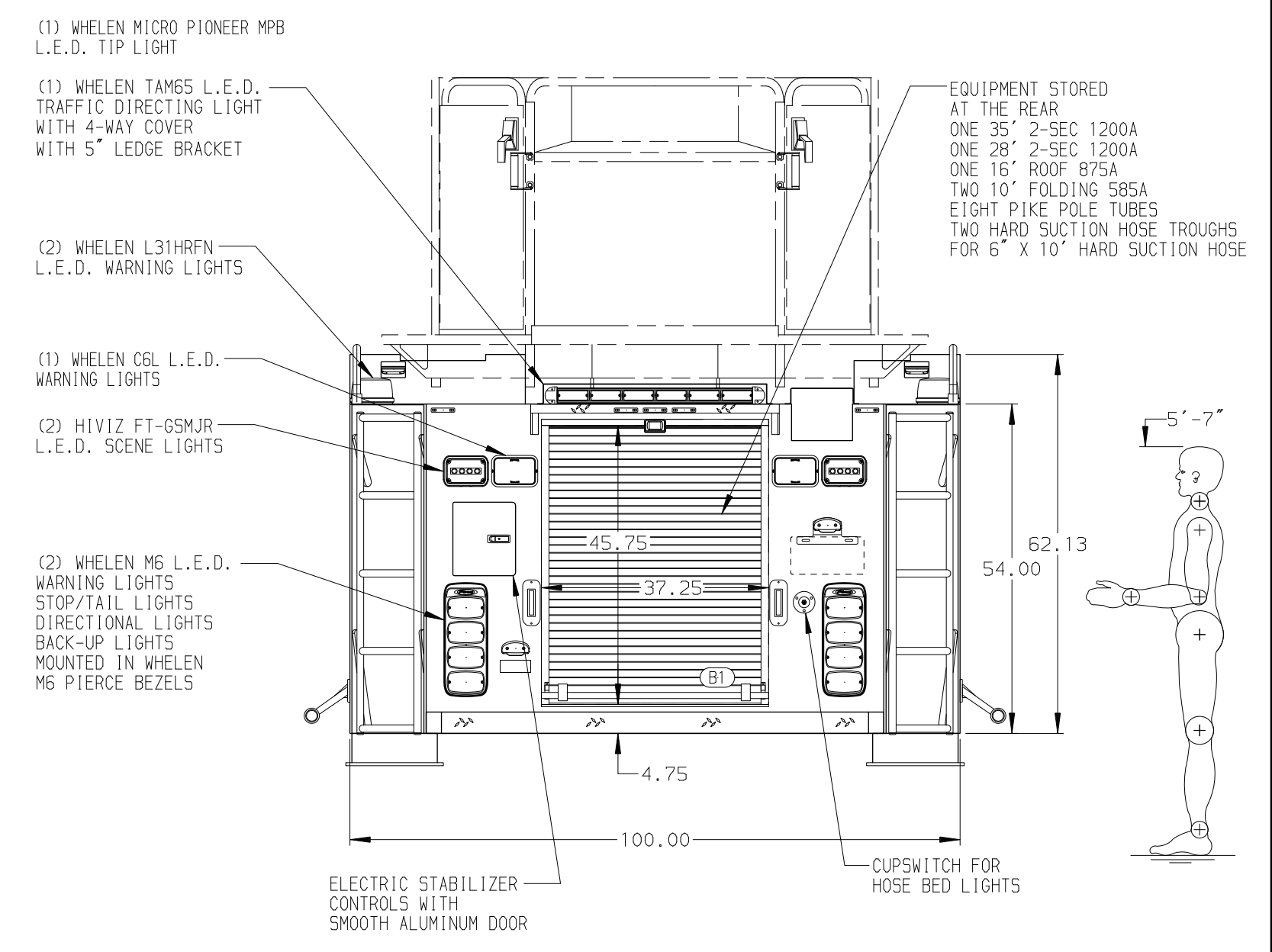
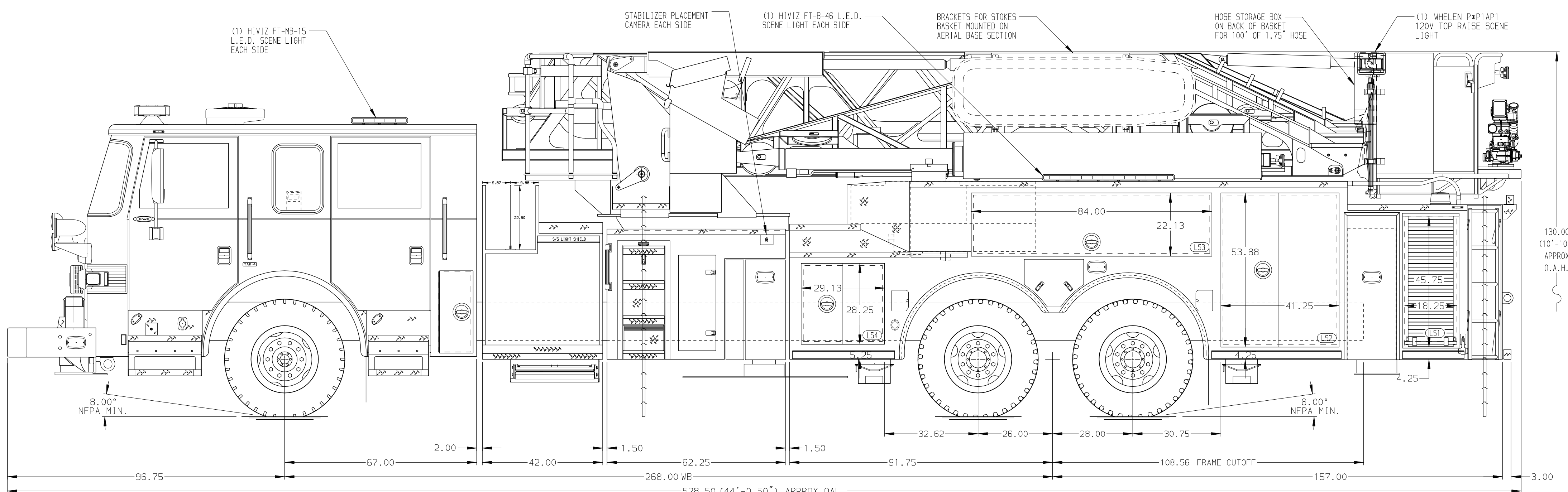


BODY 100' Ascendant Aerial Tower Alum Body COMPT, LEFT SIDE Full Height Lap Doors COMPT, RIGHT SIDE Full Height Lap Doors	WATER TANK 275 Gal/Lon Poly Water Tank Foam System Husky 12 Singe Agent Foam System Foam Cell 25 Gal/Lon Foam Cell, Reduced Water
---	---



CHASSIS Arrow XT Chassis ENGINE 525 HP DD13 Engine	CAB 6700 Arrow XT Cab BUMPER 27" (16" Extended) Painted Aluminum	AXLE, FRONT, CUSTOM 24,000 Lb TAK-4 Axle AXLE, REAR 54,000 Lb Meritor Axle	TRANSMISSION Allison 5th Gen, 4500 EVS P	PUMPHOUSE 42" Control Zone Side Mount PUMP 2000 GPM Waterous S100	CROSSLAYS, 1.50" (2) 1.50", With Trays, 200' CROSSLAYS, 2.50" 2.50" Crosslay Not Required	SPEEDLAYS Speedlays Not Required GENERATOR Generator Not Required	SAFETY Side Roll and Frontal Impact Protection
NOTE DIMENSIONS SHOWN ARE APPROXIMATE AND ARE SUBJECT TO MINOR DEVIATIONS AS MAY OCCUR OR BE NECESSARY IN CONSTRUCTION. MINOR DETAILS NOT SHOWN.							
1. SHORELINE RECEPTACLE WITH KUSSMAUL SUPER AUTO-EJECT LOCATED IN THE DRIVER SIDE STEPWELL 2. AIR INLET WITH DISCONNECT COUPLING IN A RECESSED ALUMINUM TREADPLATE BOX IN THE DRIVER SIDE STEPWELL 3. BATTERY CHARGER LOCATED BEHIND DRIVER'S SEAT 4. BATTERY CHARGER INDICATOR BEHIND DRIVER'S SEAT DISPLAYED THROUGH WINDOW 5. L.E.D. LIGHT STRIPS WITH STAINLESS STEEL PROTECTIVE COVER LOCATED IN HOSE BED 6. TWO ADJUSTABLE FULL WIDTH/FULL DEPTH SHELVES IN COMPARTMENTS PER SHOP ORDER 7. TWO ADJUSTABLE SLIDE-OUT TRAYS IN COMPARTMENTS PER SHOP ORDER 8. FIVE FLOOR MOUNTED SLIDE-OUT TRAYS IN COMPARTMENTS PER SHOP ORDER 9. ONE ADJUSTABLE TOOL BOARD MOUNTED TO SLIDE-OUT TRAY IN COMPARTMENT PER SHOP ORDER		10. ONE TOOL DRAWER SET OF (4) IN COMPARTMENT PER SHOP ORDER 11. THREE PAC TRAC ON BACK WALL OF COMPARTMENTS PER SHOP ORDER 12. TWO 120V DUREX RECEPTACLES LOCATED IN CAB PER SHOP ORDER 13. HOSE STORAGE BOX ON RIGHT SIDE OF BASKET FOR 100' OF 1.75" D.J. POLY HOSE 14. 120V POWER TO AERIAL BASKET 15. NON-RAISED AERIAL PEDESTAL 16. 3-IN-1 LIFECOMB BRACKETS AT AERIAL BASKET 17. CIRCUIT BREAKER PANEL LOCATED PER SHOP ORDER					

		JOB NO.	36228
		SCALE	1:24
TITLE	100' ASCENDANT AERIAL TOWER AND BODY ASSEMBLY	DRAWN BY	TKA
FOR	HAMMONDSPOUT FIRE DISTRICT	CHECKED BY	NDA
DWG NO.	36228AD	SHEET SIZE	D
REV	DATE	BY	CH
07MAY21	TKA	GKH	
19MAR21	TKA	MSA	
ARROW-XT			