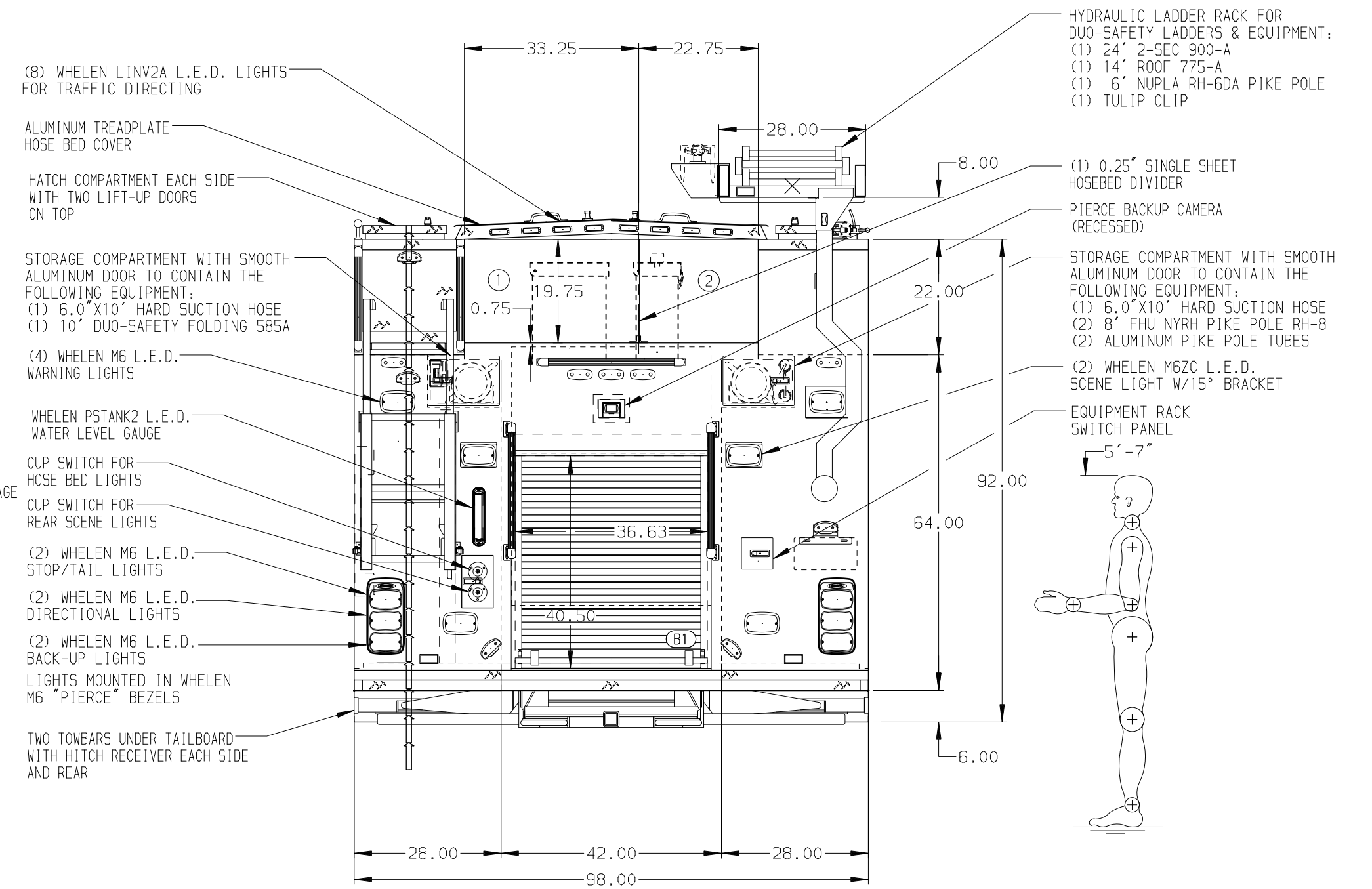
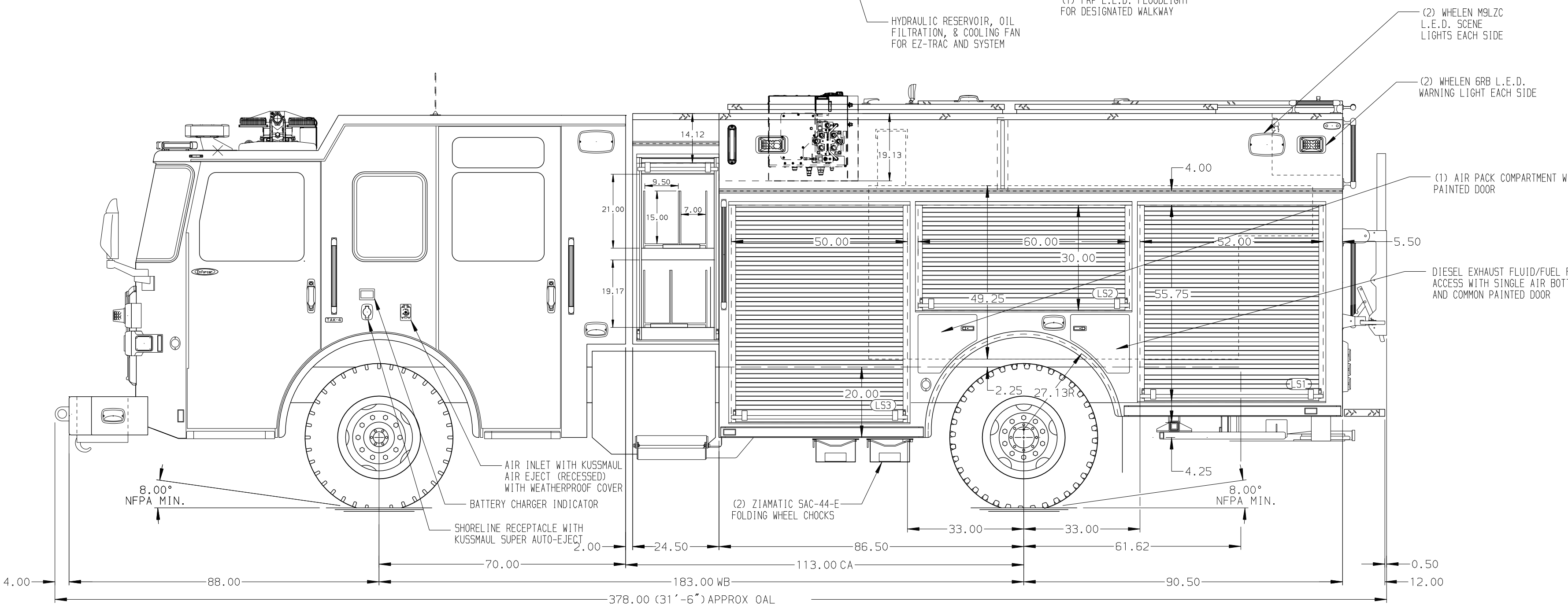


HOSEBED CAPACITIES
 ① 1000' OF 5.00 LDH HOSE
 ② 500' OF 3.00 D.J. HOSE



ALUMINUM BODY MAXIMUM O.A.L. 420" MAXIMUM O.A.H. 144" SIDE ROLL AND FRONTAL IMPACT PROTECTION

NOTE
 DIMENSIONS SHOWN ARE APPROXIMATE AND ARE SUBJECT TO MINOR DEVIATIONS AS MAY OCCUR OR BE NECESSARY IN CONSTRUCTION. MINOR DETAILS NOT SHOWN.

- BATTERY CHARGER LOCATED BEHIND OFFICER'S SEAT
- DUAL L.E.D. LIGHT STRIPS LOCATED BELOW HOSE BED COVER
- ONE ADJUSTABLE FW/D SHELVES IN COMPARTMENTS LS3, B1; TWO IN LS1, LS2, RS1, RS3
- ONE FLOOR MOUNTED SLIDE-OUT TRAY IN COMPARTMENTS LS1, LS3, RS1, RS3, B1
- LOUVERS IN COMPARTMENT RS1
- STORAGE BIN FOR (2) EXTINGUISHERS LOCATED IN COMPARTMENT RS3
- INSTA-CHAIN AUTOMATIC TIRE CHAINS
- ONE 120V DUPLEX RECEPTACLE LOCATED IN COMPARTMENT LS1, LS2, RS1, RS2; TWO IN RS3
- XANTREX PROSINE INVERTER LOCATED IN RH2
- ONE ADJUSTABLE SLIDE-OUT TRAY IN COMPARTMENT B1; TWO IN LS3
- ONE ADJUSTABLE TILT/SLIDE-OUT TRAY IN COMPARTMENT LS2
- TWO SWING-OUT TOOLBOARDS WITH PEGBOARD LOCATED IN COMPARTMENT RS2
- ONE CTECH DRAWER ASSEMBLY WITH (4) DRAWERS LOCATED IN COMPARTMENT RS3
- ONE HORIZONTAL PARTITION LOCATED IN COMPARTMENT RS3
- ONE HORIZONTAL PARTITION LOCATED IN COMPARTMENT RS3
- 100 # OIL DRY HOPPER IN RH2
- AXE MOUNTING ON TOOLBOARDS IN COMPARTMENT RS2

REV	DATE	BY	CH	ENFORCER
08SEP21	LME	NPE		CHASSIS DATA
19AUG21	LME	NPE		MAKE
17AUG21	LME	NPE		PIERCE
17JUN21	LME	NPE		MODEL
19MAR21	LME	NPE		

		JOB NO.	36194
		SCALE	1:24
TITLE 1500-D-770, 750 WATER W/20 FOAM, 177" PUC (3) XLAYS, EZ TRAC, DELUGE, HUSKY 3, BOOSTER REEL		DATE	11MAR21
		FOR ASPEN FIRE PROTECTION DISTRICT FRONT RANGE FIRE APPARATUS, LTD	
DWG NO. 36194AD		BID#	1025
		CHECKED BY	NPE
SHEET NO. 1 OF 1		WAYNE KERBER	12MAR21
		SHEET SIZE	D