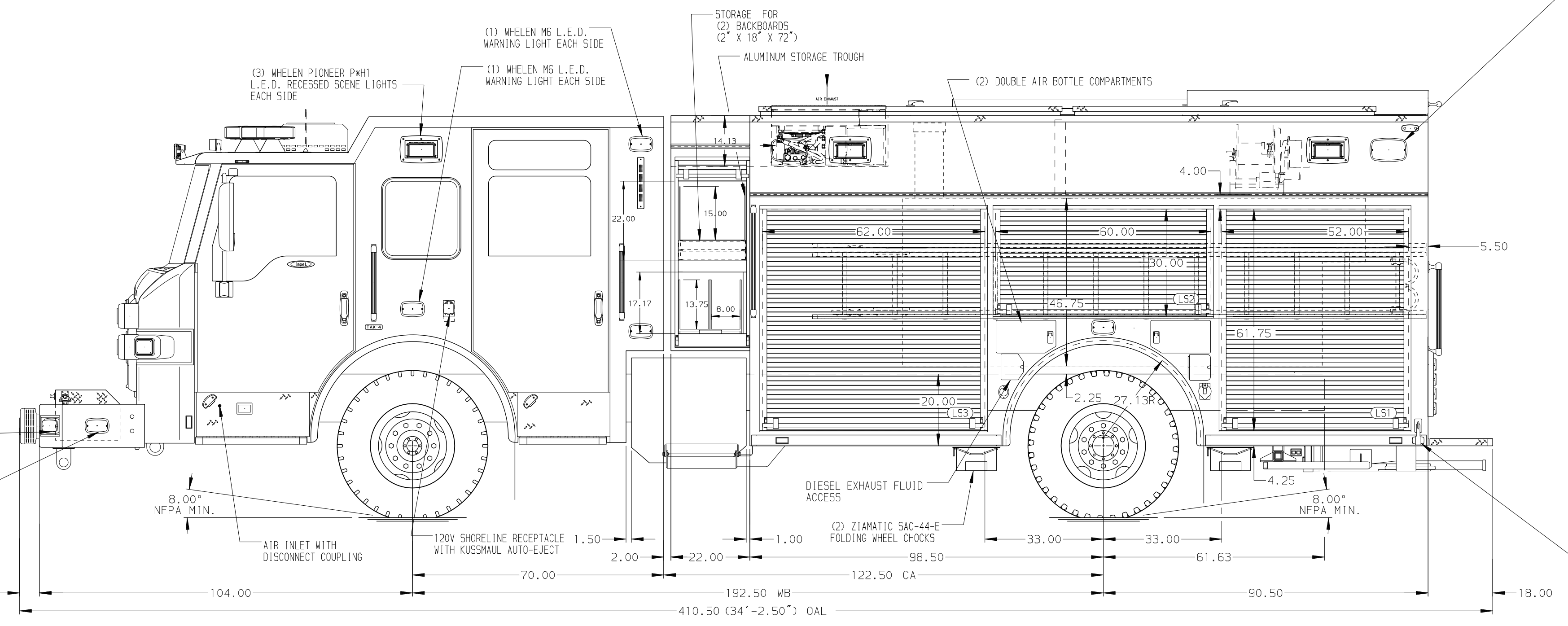


- HOSEBED CAPACITIES
- ① 200' OF 2.50" D.J. POLY HOSE
  - ② 900' OF 5.00" LOH HOSE
  - ③ 600' OF 2.50" D.J. POLY HOSE



SURFACE DESIGNATION AND PATHWAY MARKINGS

(2) WHELEN M9 L.E.D. WARNING LIGHTS EACH SIDE

2-SECTION ROLLER TOP LIFT-UP ALUMINUM TREADPLATE HOSE BED COVER

(2) HOSEBED DIVIDERS

WHELEN TAL65 L.E.D. TRAFFIC DIRECTING LIGHT RECESSED WITH STAINLESS STEEL TRIM

PIERCE REAR VIEW CAMERA WITH ALUMINUM TREADPLATE GUARD

L.S. LONG ITEM COMPARTMENT ALCO-LITE LADDER

(1) 10" FOLDING FL-10

(2) ALUM PIKE POLE TUBES

LADDER STORAGE COMPARTMENT FOR ALCO-LITE LADDERS:

(1) 24" PEL-24 2-SECTION

(1) 14" PRL-14 ROOF

(2) WHELEN PELCC L.E.D. SCENE LIGHTS

(2) WHELEN M5 L.E.D. WARNING LIGHTS

CUPSWITCH FOR HOSEBED LIGHTING

CUPSWITCH FOR REAR FLOOD LIGHTS

(2) WHELEN M5 L.E.D. WARNING LIGHTS

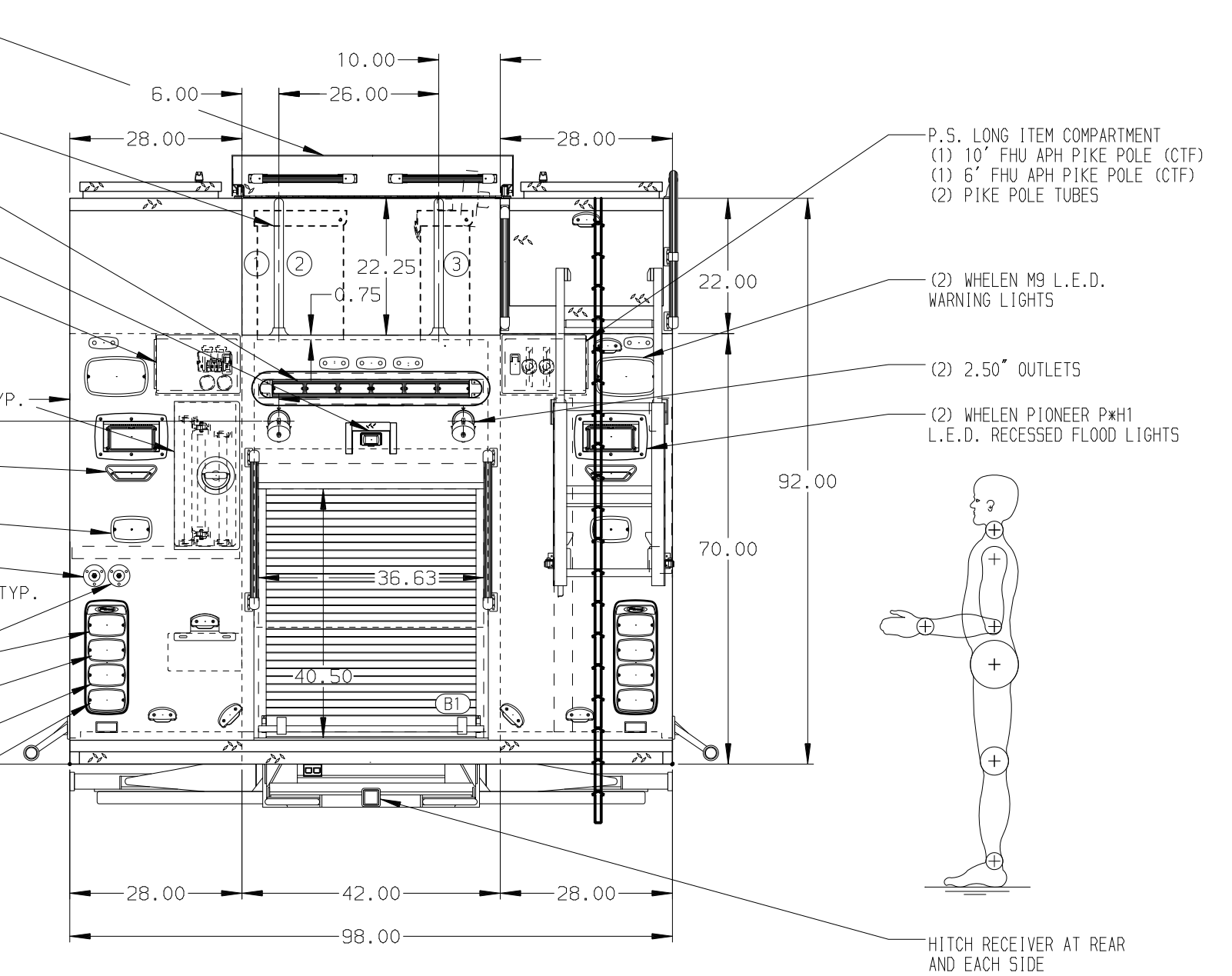
(2) WHELEN M5 L.E.D. STOP/TAIL LIGHTS

(2) WHELEN M5 L.E.D. DIRECTIONAL LIGHTS

(2) WHELEN M5 L.E.D. BACK-UP LIGHTS

LIGHTS MOUNTED IN WHELEN M9 'PIERCE' BEZELS

(1) BRITAX MODEL 427 L.E.D. MARKER LIGHT EACH SIDE



ALUMINUM BODY

NOTE  
DIMENSIONS SHOWN ARE APPROXIMATE AND ARE SUBJECT TO MINOR DEVIATIONS AS MAY OCCUR OR BE NECESSARY IN CONSTRUCTION. MINOR DETAILS NOT SHOWN.

1. BATTERY CHARGER LOCATED BEHIND DRIVER'S SEAT
2. BATTERY CHARGER INDICATOR LOCATED AT DRIVER'S SIDE STEP AREA
3. DUAL L.E.D. LIGHT STRIPS LOCATED IN HOSE BED
4. PULL STRAP ON DOOR IN CROSSLAY ROLL UP DOORS
5. ONE 120V DUPLEX RECEPTACLE IN EACH OVERHEAD CREW CAB COMPARTMENT AND ONE IN THE LEFT SIDE FORWARD FACING CREW CAB COMPARTMENT

REV	DATE	BY	CH	IMPEL
21JUN21	LST	JJR		
17MAY21	LST	JJR		
11MAR21	LST	JJR		

		JOB NO.	36169
		SCALE	DATE
CHASSIS DATA TITLE MAKE PIERCE MODEL DWG NO.	1500-D-780P, 750 GAL OF WATER W/ 30 GAL FOAM CELL 189" PUC RESCUE, LADDERS THRU BODY, (2) CROSSLAYS SEMINOLE COUNTY FIRE DEPARTMENT SANFORD, FLORIDA	DRAWN BY	LST
		CHECKED BY	JJR
		SHEET SIZE	SHEET NO.
		D	1 OF 2