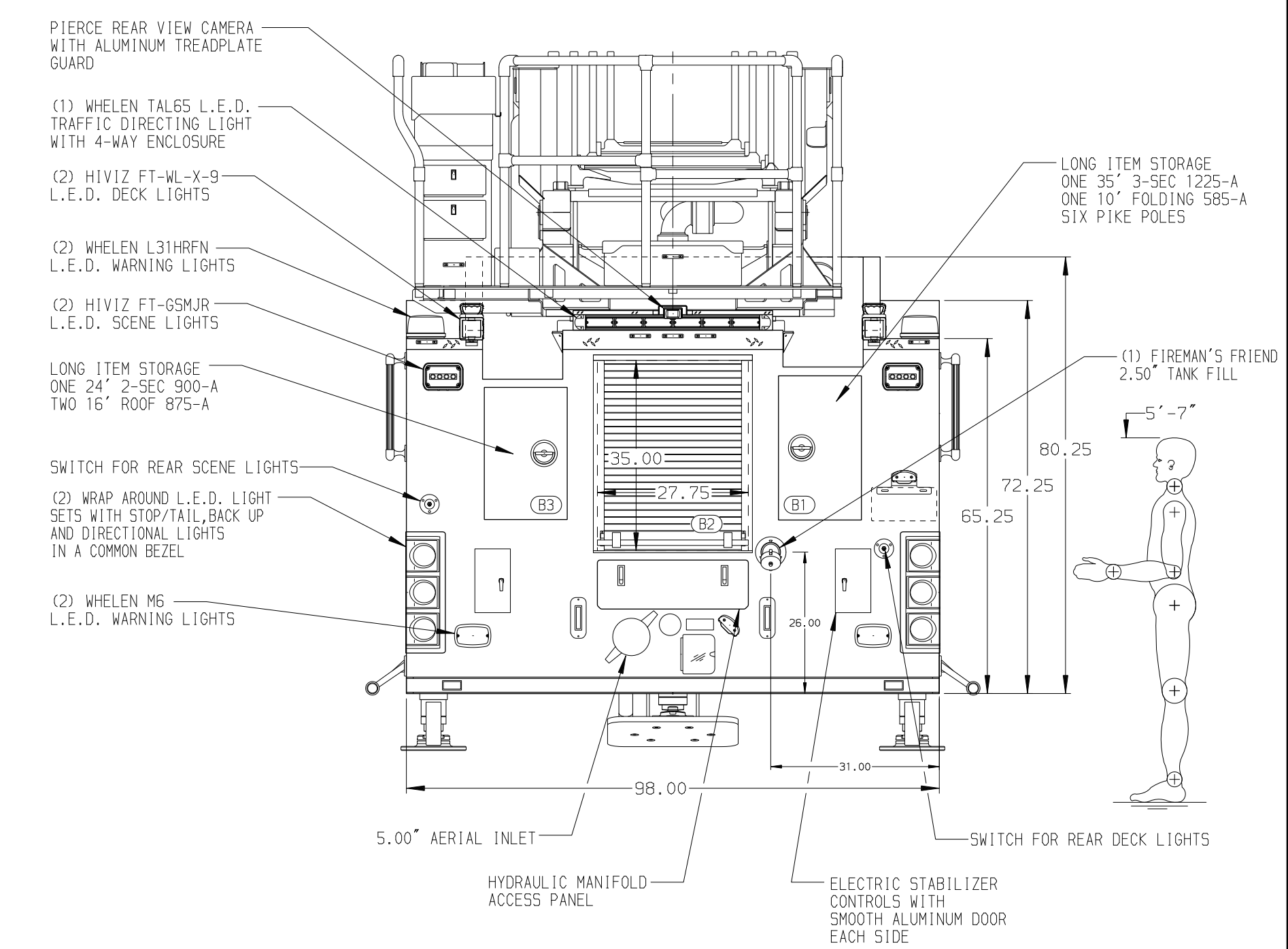
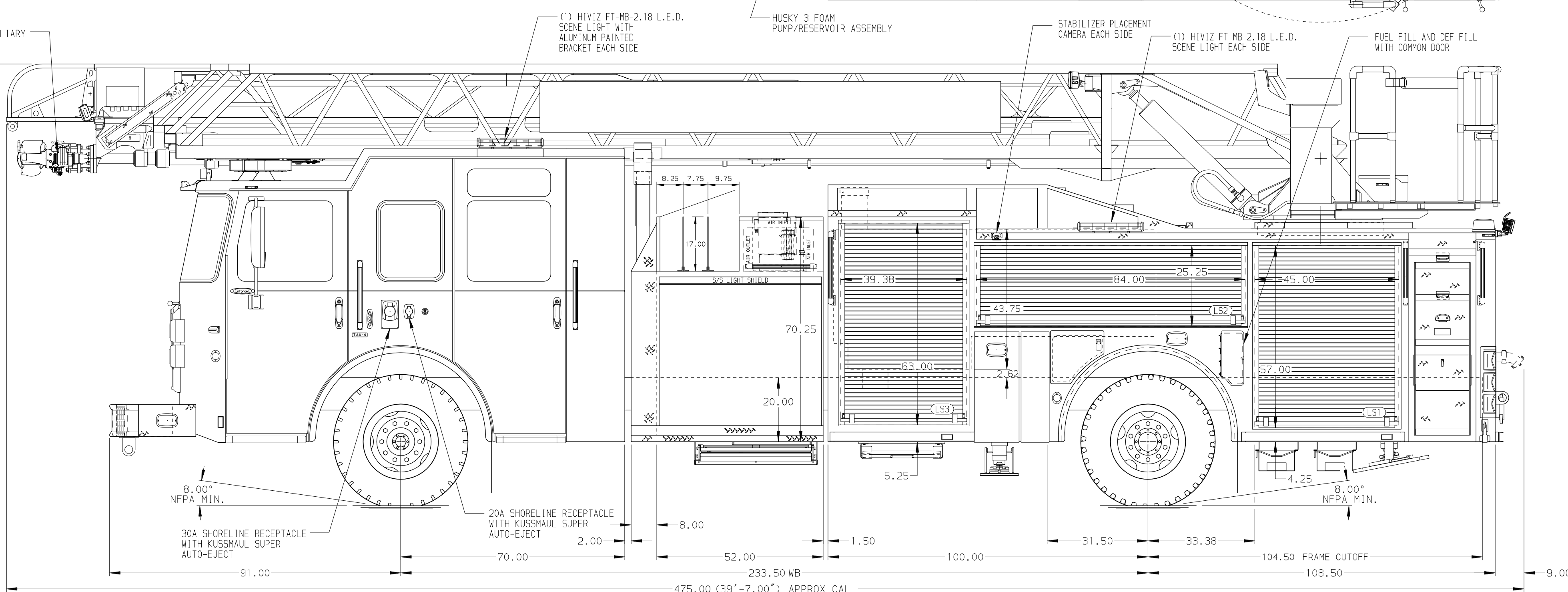


BODY	WATER TANK
107' ASL Aluminum Body	470 Gallon Poly Water Tank
COMPT, LEFT SIDE FRONT	Foam System
Full Height RollUp Forward	Husky 3 Single Agent Foam System
COMPT, LEFT SIDE REAR	Foam Cell
Full Height RollUp Rearward	30 Gallon Foam Cell, Reduced Water
COMPT, RIGHT SIDE FRONT	
Full Height RollUp Forward	
COMPT, RIGHT SIDE REAR	
Full Height RollUp Rearward	



CHASSIS	CAB	AXLE, FRONT, CUSTOM	TRANSMISSION	PUMPHOUSE	CROSSLAYS, 1.50"	SPEEDLAYS	SAFETY
Enforcer Chassis	7010 Notched Enforcer Cab	24,000 Lb TAK-4 Axle	Allison 5th Gen, 4000 EVS P	52" Control Zone Side Mount	(2) 1.50" Standard Capacity	Speedlays Not Required	Side Roll and
ENGINE	BUMPER	AXLE, REAR		PUMP	CROSSLAYS, 2.50"	GENERATOR	Frontal Impact Protection
505 HP DD13 Engine	22" Extended Stainless Steel	33,500 Lb Meritor Axle		2000 GPM Waterous CSU	(1) 2.50" Standard Capacity	Onan 6kW Hydraulic	

**NOTE**  
DIMENSIONS SHOWN ARE APPROXIMATE AND ARE SUBJECT TO MINOR DEVIATIONS AS MAY OCCUR OR BE NECESSARY IN CONSTRUCTION. MINOR DETAILS NOT SHOWN.

- AIR INLET WITH KUSSMAUL AIR-EJECT LOCATED ON DRIVER SIDE OF THE CAB
- AIR OUTLET WITH SHUT OFF VALVE LOCATED ON THE DRIVER'S SIDE PUMP PANEL
- TWO POWER CONVERTER/BATTERY CHARGERS LOCATED IN COMPARTMENT PER SHOP ORDER
- L.E.D. LIGHT STRIPS LOCATED IN HOSE BED PER SHOP ORDER
- FIVE ADJUSTABLE SHELVES IN COMPARTMENTS PER SHOP ORDER
- FOUR FLOOR MOUNTED SLIDE-OUT TRAYS IN COMPARTMENTS PER SHOP ORDER
- ONE SWING-OUT ALUMINUM TOOL BOARD IN COMPARTMENT PER SHOP ORDER
- SIX ZIMMATIC SCBA HOLDER BRACKETS IN COMPARTMENTS PER SHOP ORDER
- ONE VERTICAL PEGBOARD PARTITION IN COMPARTMENT PER SHOP ORDER
- TWO ALUMINUM PEGBOARD ON REAR WALL IN COMPARTMENTS PER SHOP ORDER
- CIRCUIT BREAKER PANEL LOCATED IN COMPARTMENT PER SHOP ORDER
- SUB-FEED BREAKER BOX LOCATED IN COMPARTMENT PER SHOP ORDER
- ONE 120V DUPLEX RECEPTACLE LOCATED IN CAB PER SHOP ORDER
- TWO 120V DUPLEX RECEPTACLES LOCATED IN COMPARTMENT PER SHOP ORDER
- THERMAL KF6 COLOR AND WIRELESS CAMERA SYSTEM AT AERIAL TIP
- NON-RAISED AERIAL PEDESTAL
- LIFTING EYE ROPE RESCUE ATTACHMENT AT AERIAL TIP
- 1500 GPM HIGH FLOW WATERWAY
- LIMITED RETRACTION NOT REQUIRED

REV	DATE	BY	CH	ENFORCER	CHASSIS DATA	TITLE	JOB NO.
07SEP21	SHU	CW1				107' ASCENDANT AERIAL LADDER AND BODY ASSEMBLY	36157
03SEP21	SHU	CW1					SCALE 1:24 DATE
27AUG21	TKA	CW1			PIERCE	ABBOTSFORD FIRE DEPARTMENT	DRAWN BY TKA 07APR21
17JUN21	TKA	THS				ABBOTSFORD, BRITISH COLUMBIA	CHECKED BY CRI 08APR21
						DWG NO. 36157AD	SHEET SIZE D SHEET NO. 1 OF 1

