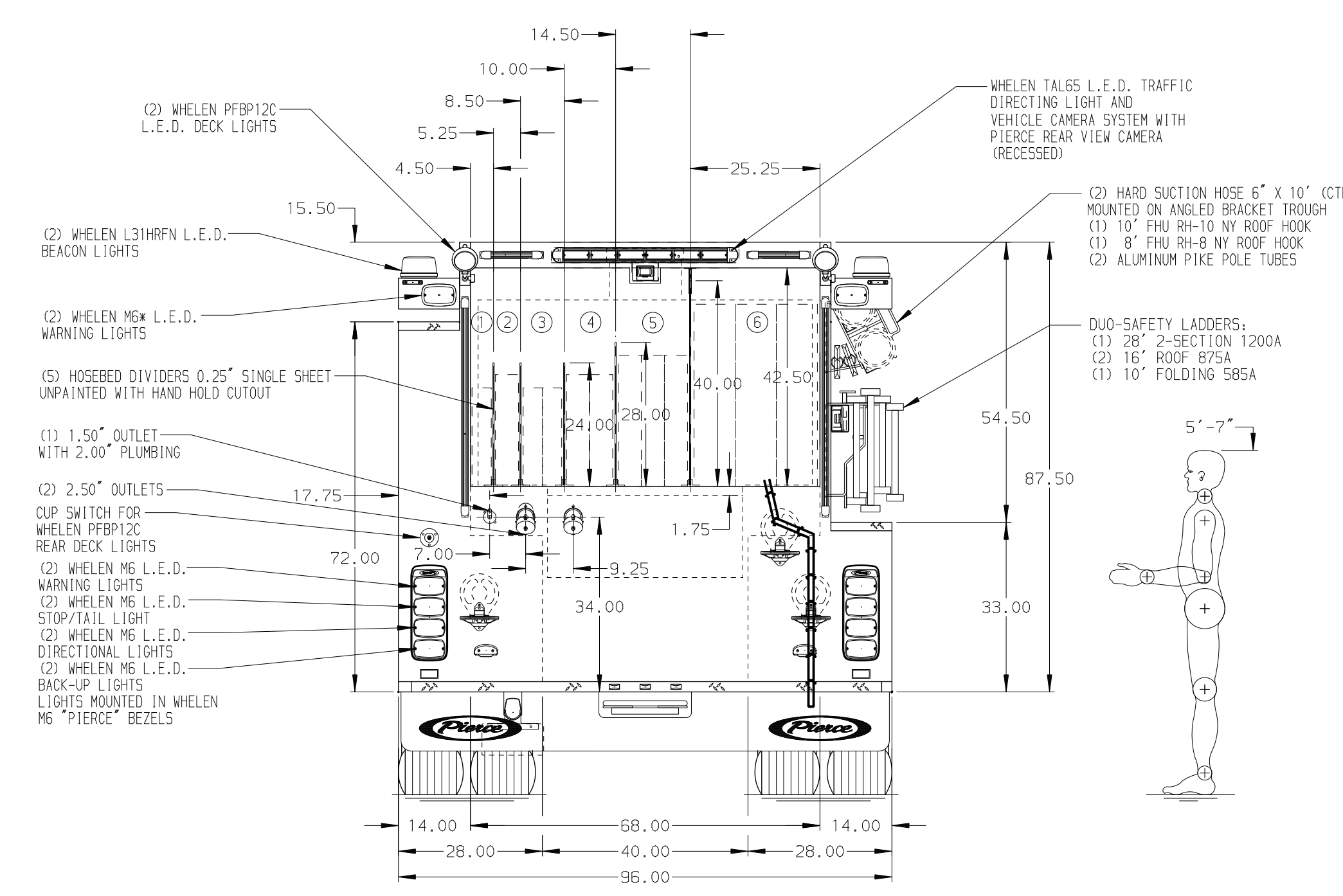
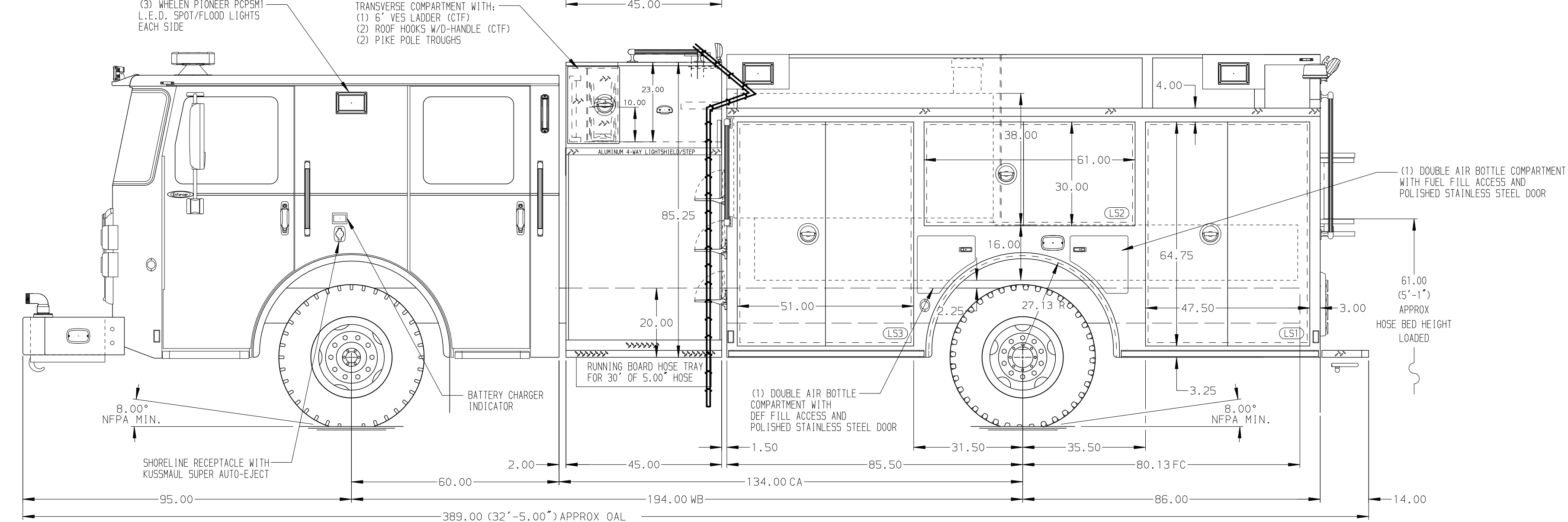
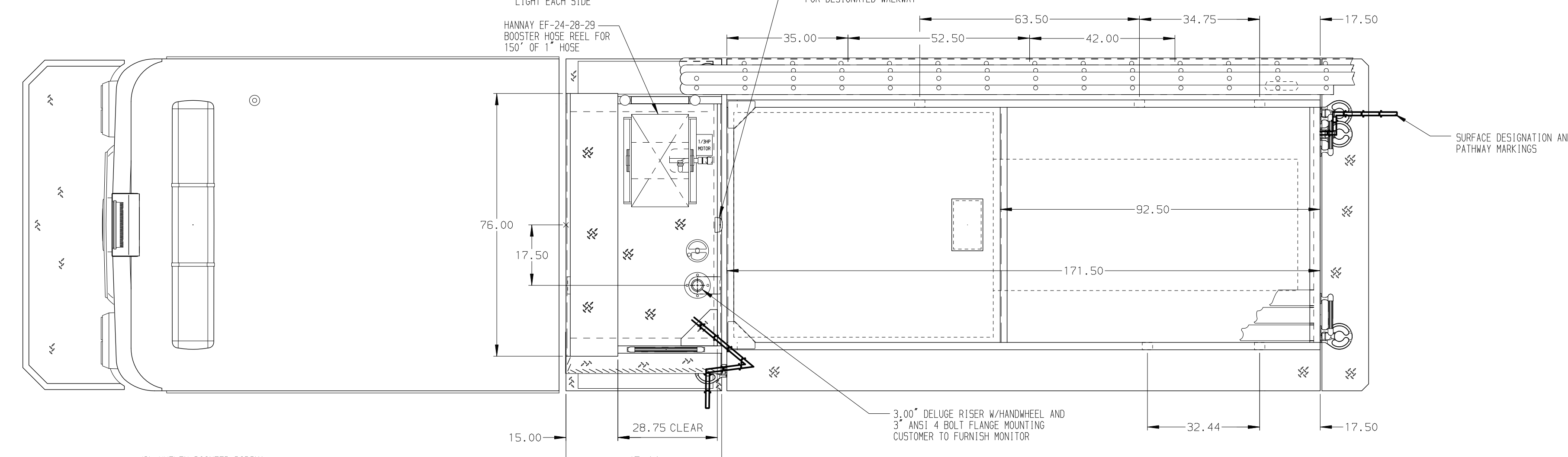


- HOSEBED CAPACITIES**
- ① - 200' OF 1.88" DJP HOSE (SINGLE STACK)
  - ② - 200' OF 2.50" DJP HOSE (SINGLE STACK)
  - ③ - 400' OF 1.88" DJP HOSE (DOUBLE STACK)
  - ④ - 400' OF 2.50" DJP HOSE (DOUBLE STACK)
  - ⑤ - 700' OF 2.50" DJP HOSE
  - ⑥ - 1000' OF 5.00" DJP HOSE



ALUMINUM BODY

SIDE ROLL AND FRONTAL IMPACT PROTECTION

**NOTE**  
DIMENSIONS SHOWN ARE APPROXIMATE AND ARE SUBJECT TO MINOR DEVIATIONS AS MAY OCCUR OR BE NECESSARY IN CONSTRUCTION. MINOR DETAILS NOT SHOWN.

1. AIR INLET WITH DISCONNECT COUPLING LOCATED IN DRIVER'S SIDE STEP WELL
2. BATTERY CHARGER LOCATED BEHIND DRIVER'S SEAT
3. ONE FULL WIDTH/DEPTH ADJUSTABLE SHELF IN COMPARTMENT L53, TWO IN L51
4. ONE FLOOR MOUNTED SLIDE-OUT TRAY IN COMPARTMENT R51 AND R52
5. CTECH DRAWER ASSEMBLY IN L53
6. 120V RECEPTACLE IN L51

REV	DATE	BY	CH	ENFORCER
15JUL21		SAM	ZWE	PIERCE
17JUN21		SAM	ZWE	MODEL

		JOB NO.	36131
		SCALE	DATE
TITLE	1500-D-1000P, 1000 GAL NY STYLE TANK, 171" BODY LADDER BRACKETS, DELUGE MOUNT, TRAVERSE COMPARTMENT		
FOR	BUTLER COUNTY FD 8 DOUGLASS, KANSAS		
DWG NO.	36131AD		
CHECKED BY	CZA	DRAWN BY	SAM
SHEET SIZE	D	CHECKED BY	CZA
SHEET NO.	1 OF 1	DRAWN BY	SAM