

**PUMPER BODY**  
Medium Aluminum 2nd Gen Pumper

**CHASSIS**  
Enforcer Chassis

**CHASSIS AXLE, FRONT, CUSTOM**  
18,000 Lb Dana Axle

**AXLE, REAR**  
27,000 Lb Dana Axle

**ENGINE**  
450 HP Cummins L9 Engine

**TRANSMISSION**  
Allison 5th Gen, 3000 EVS P

**BUMPER**  
19" Extended Painted Steel

**CAB**  
7010 Enforcer Cab

**BODY WATER TANK**  
1000 Gallon Poly Water Tank

**COMPT, PUMPER, REAR**  
51.25" FF RollUp Rear Compt

**COMPT, PUMPER, LEFT SIDE**  
152" RollUp Full Height Front & Rear FDLR

**COMPT, PUMPER, RIGHT SIDE**  
152" RollUp Full Height Front & Rear FDLR

**FIRE SUPPRESSION PUMPHOUSE**  
45" Control Zone Side Mount

**PUMP**  
1500 GPM Waterous CSU

**CROSSLAYS, 1.50"**  
(2) 1.50" Standard Capacity

**CROSSLAYS, 2.50"**  
2.50" Crosslay Not Required

**SPEEDLAYS**  
Speedlays Not Required

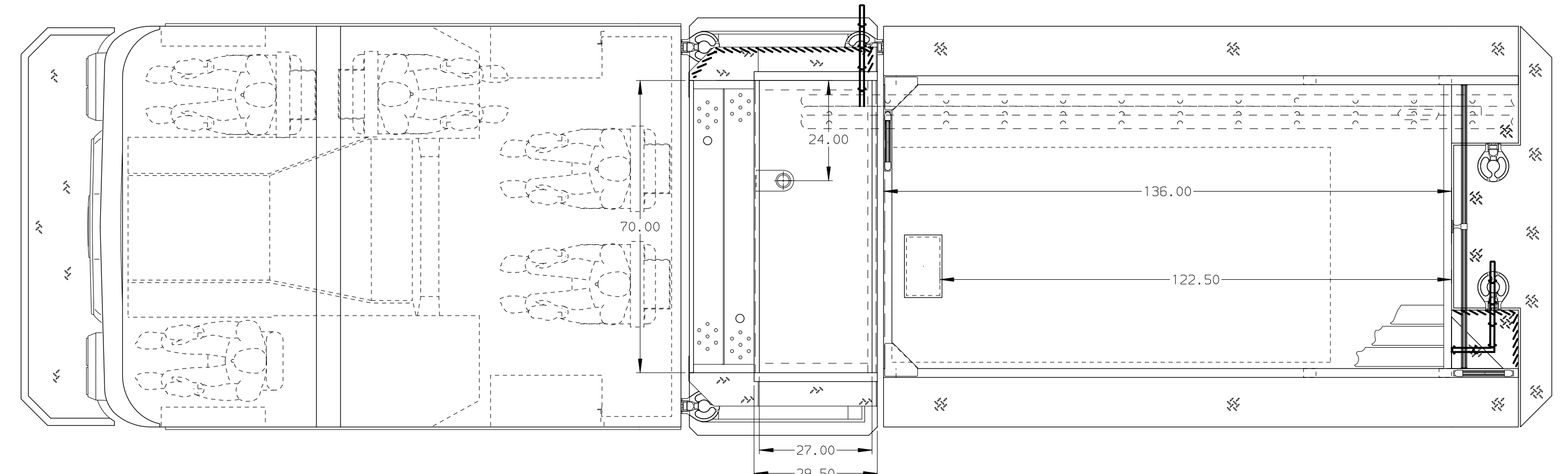
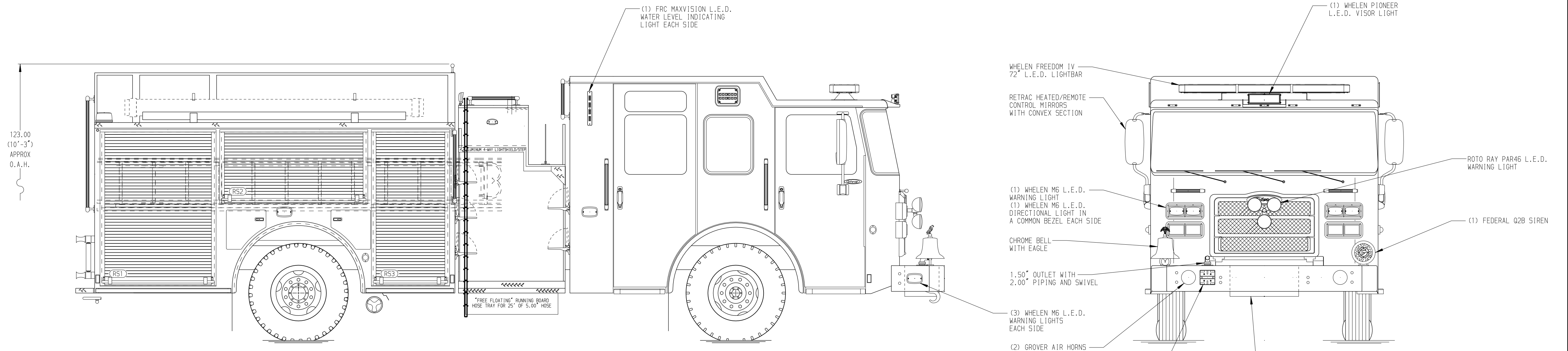
**GENERATOR**  
Generator Not Required

**Foam System**  
Foam System Not Required

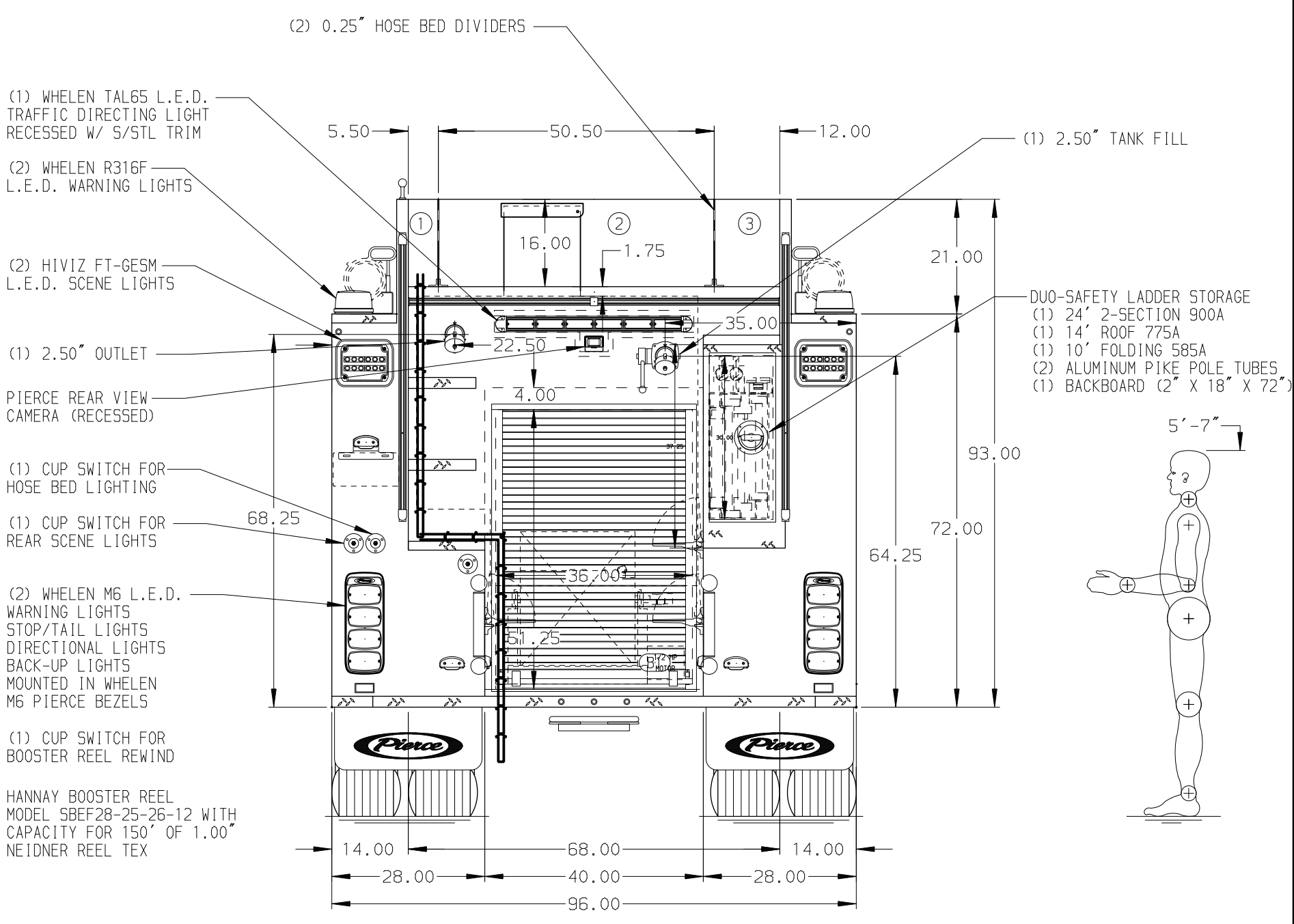
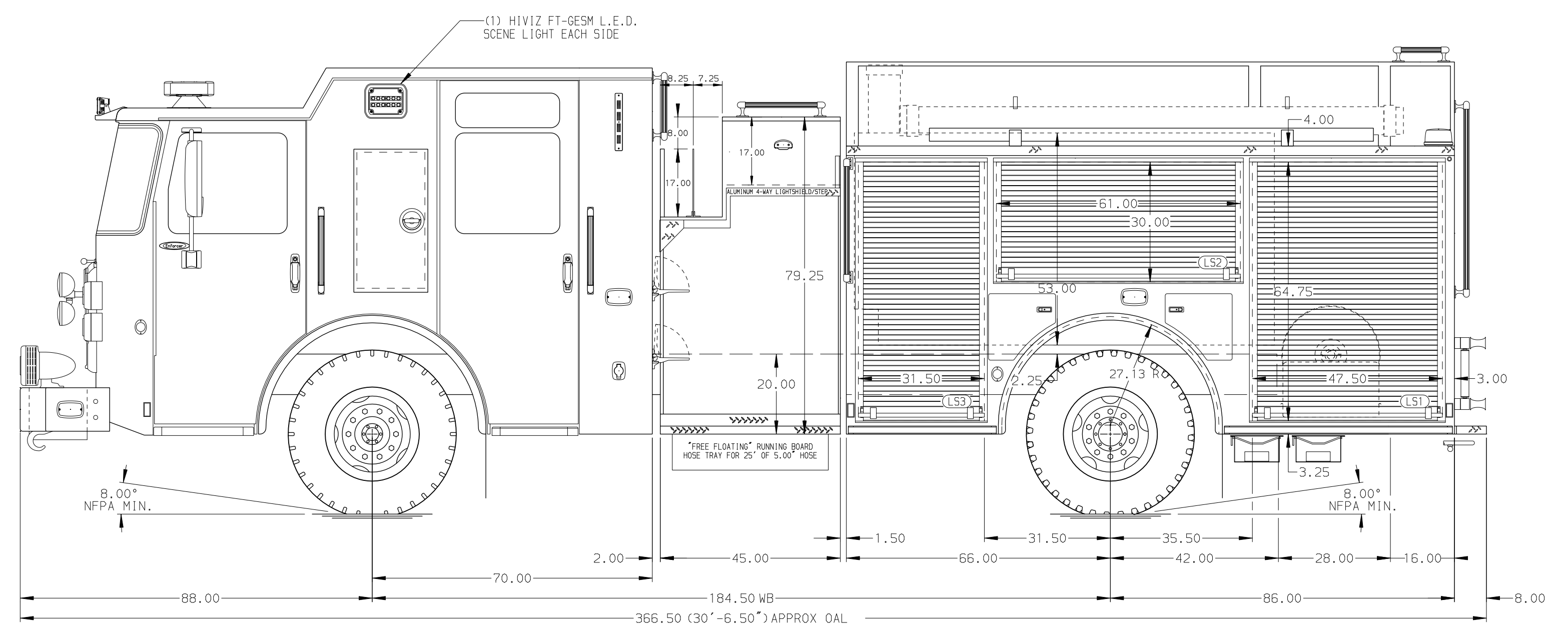
**Foam Cell**  
Foam Cell Not Required

**NOTE**  
DIMENSIONS SHOWN ARE APPROXIMATE AND ARE SUBJECT TO MINOR DEVIATIONS AS MAY OCCUR OR BE NECESSARY IN CONSTRUCTION. MINOR DETAILS NOT SHOWN.

1. SHORELINE RECEPTACLE WITH KUSSMAUL SUPER AUTO-EJECT LOCATED ON DRIVER SIDE OF THE CREW CAB
2. AIR INLET/OUTLET WITH DISCONNECT COUPLING ON THE DRIVER SIDE PUMP PANEL
3. BATTERY CHARGER LOCATED IN CAB PER SHOP ORDER
4. BATTERY CHARGE INDICATOR LOCATED ON THE DRIVER SIDE SEAT RISER
5. SIX ADJUSTABLE SHELVES LOCATED PER SHOP ORDER
6. FOUR FLOOR MOUNTED SLIDE-OUT TRAYS LOCATED PER SHOP ORDER
7. ONE TILTING/SLIDE-OUT TRAY LOCATED PER SHOP ORDER



HOSEBED CAPACITY	
<b>BED 1</b>	200' OF 2.50" D.J. POLY HOSE
<b>BED 2</b>	1000' OF 5.00" D.J. POLY HOSE
<b>BED 3</b>	400' OF 3.00" D.J. POLY HOSE



<b>Pierce MANUFACTURING INC.</b>		JOB NO.	36113
		SCALE	DATE
		1:24	
Pierce Pumper Approval Drawing		DRAWN BY	30MAR21
St Tammany Fire Protection District		CHECKED BY	30MAR21
DWG NO.		SHEET SIZE	SHEET NO.
36113AD		D	1 OF 1

REV	DATE	BY	CH	ENFORCER
31AUG21	MMF	CHR		
08JUL21	COL	CHR		