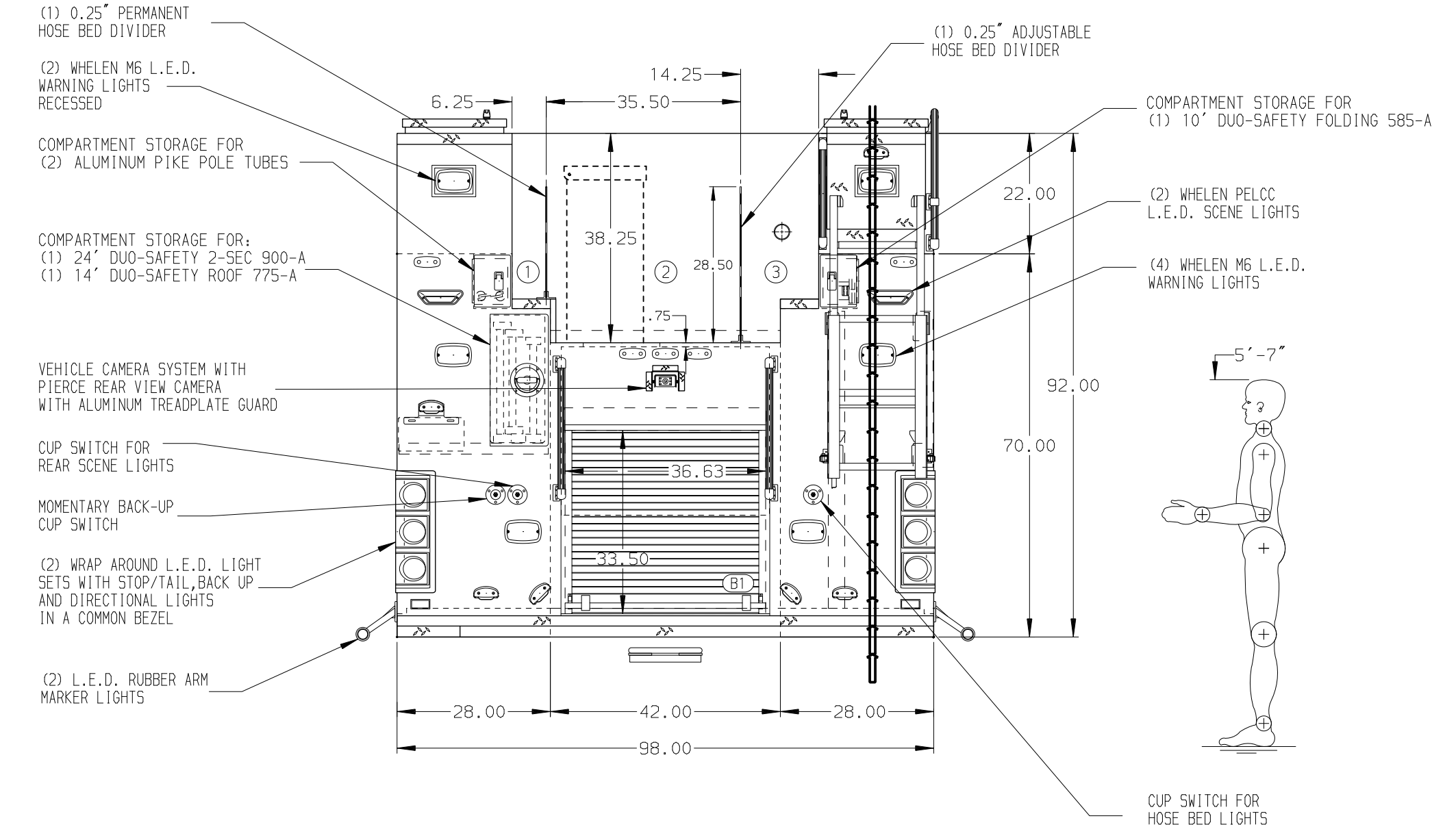
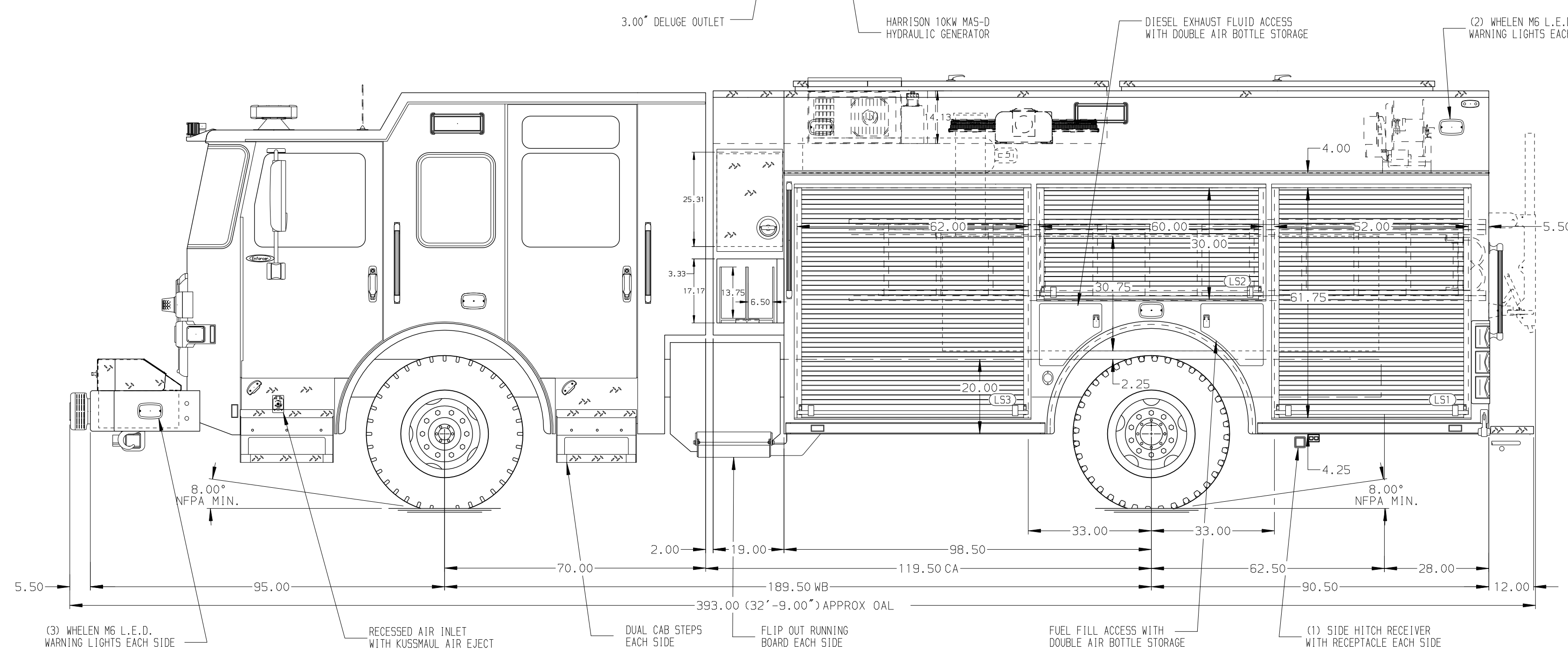


- HOSEBED CAPACITIES
- ① - 200' OF 2.50" D.J. POLY HOSE
 - ② - 1000' OF 5.00" D.J. POLY HOSE
 - ③ - 400' OF 3.00" D.J. POLY HOSE



ALUMINUM BODY

NOTE
DIMENSIONS SHOWN ARE APPROXIMATE AND ARE SUBJECT TO MINOR DEVIATIONS AS MAY OCCUR OR BE NECESSARY IN CONSTRUCTION. MINOR DETAILS NOT SHOWN.

1. BATTERY CHARGER/COMPRESSOR LOCATED ON REAR WALL OF CAB
2. BATTERY CHARGER INDICATOR LOCATED ON DRIVER'S SEAT RISER
3. DUAL L.E.D. LIGHT STRIPS LOCATED IN HOSE BED
4. ELASTIC PULL STRAP ON DOOR IN COMPARTMENT LS1, LS2, LS3, RS1, RS2 AND RS3
5. TWO FULL WIDTH/DEPTH ADJUSTABLE SHELVES IN COMPARTMENT LS1 AND LS3
6. TWO ADJUSTABLE SHELF WITH SPECIAL HEIGHT SIDES IN COMPARTMENT RS3
7. ONE FLOOR MOUNTED SLIDE-OUT TRAY IN COMPARTMENT B1
8. ONE SWING-OUT ALUMINUM TOOL BOARD IN COMPARTMENT LS2
9. ONE VERTICAL PARTITION IN COMPARTMENT RS3
10. ALUMINUM PEGBOARD WITH TRACKS ON THE BACK WALL OF COMPARTMENT LS2

11. CIRCUIT BREAKER PANEL IN COMPARTMENT RS1
12. ONE HANNAY ELECTRIC REWIND CORD REEL MODEL 1618-17-18 LOCATED IN LH1 WITH 200' OF 10/3 CABLE
13. AIR CONTROL PANEL FOR BREATHING AIR SYSTEM LOCATED IN COMPARTMENT RS1
14. SPACESAVER MODEL 100A (2) BOTTLE FILL ENCLOSURE LOCATED IN COMPARTMENT RS1
15. AIR OUTLET WITH SHUT-OFF VALVE LOCATED ON DS PUMP PANEL
16. TWO CASCADE BREATHING AIR BOTTLES IN HATCH COMPARTMENT EACH SIDE

REV	DATE	BY	CH	ENFORCER
14DEC21	JJB	ZWE		
17NOV21	JJB	ZWE		
27OCT21	JJB	ZWE		CHASSIS DATA
15SEP21	JJB	ZWE		MAKE
26JUL21	JJB	ZWE		PIERCE
10JUN21	JJB	ZWE		MODEL
25MAR21	JJB	PHA		

		JOB NO.	36106
		SCALE	DATE
TITLE	1500-D-500 GALLON WATER TANK, 189" FH/FD PUC BODY LADDERS IN LEFT SIDE BODY, (2) CROSSLAYS, DELUGE		
FOR	PINELLAS SUNCOAST INDIAN ROCKS, FLORIDA		
DWG NO.	36106AD		
	CHECKED BY	EGO	18MAR21
	SHEET SIZE	D	SHEET NO. 1 OF 1