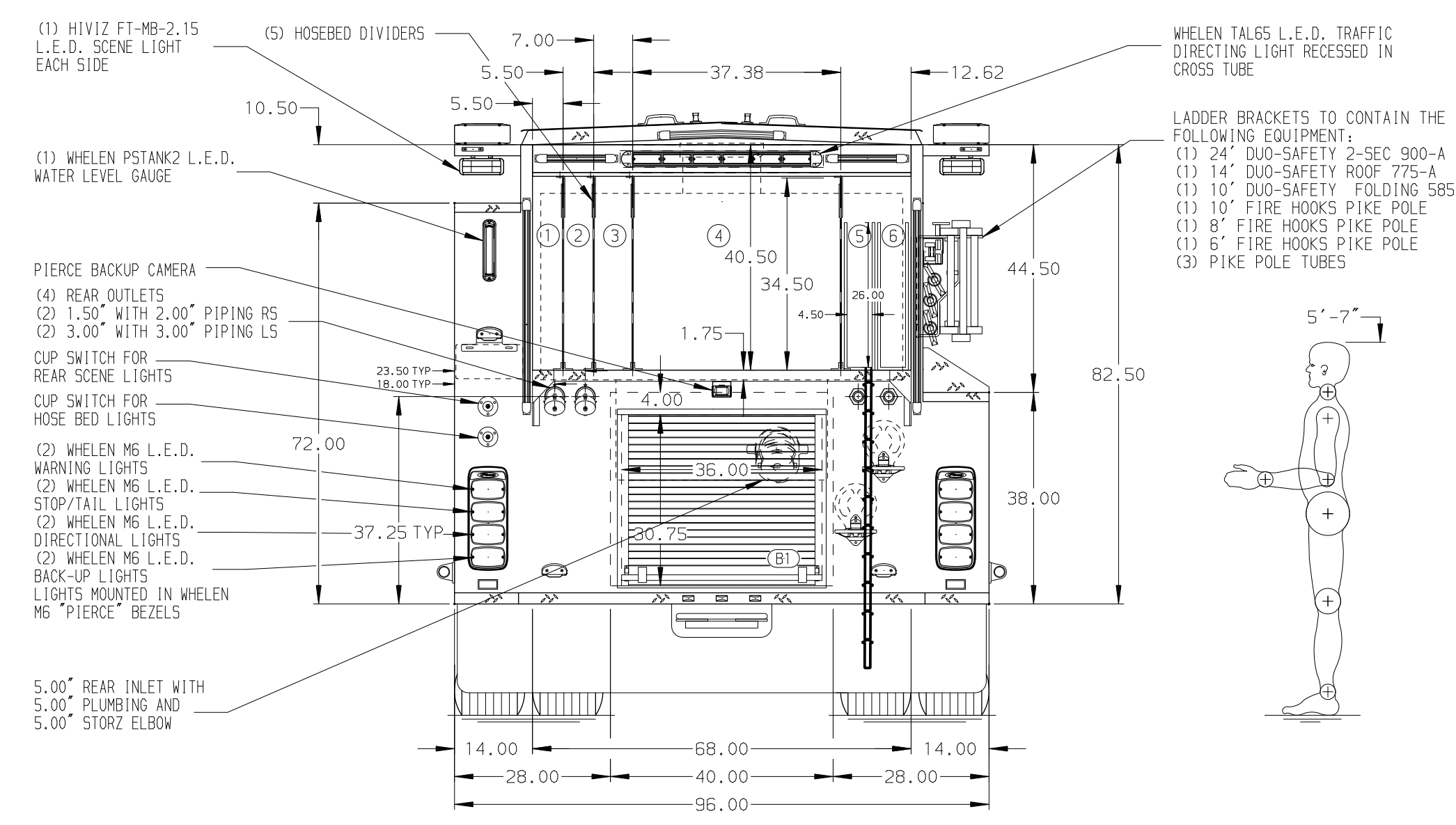
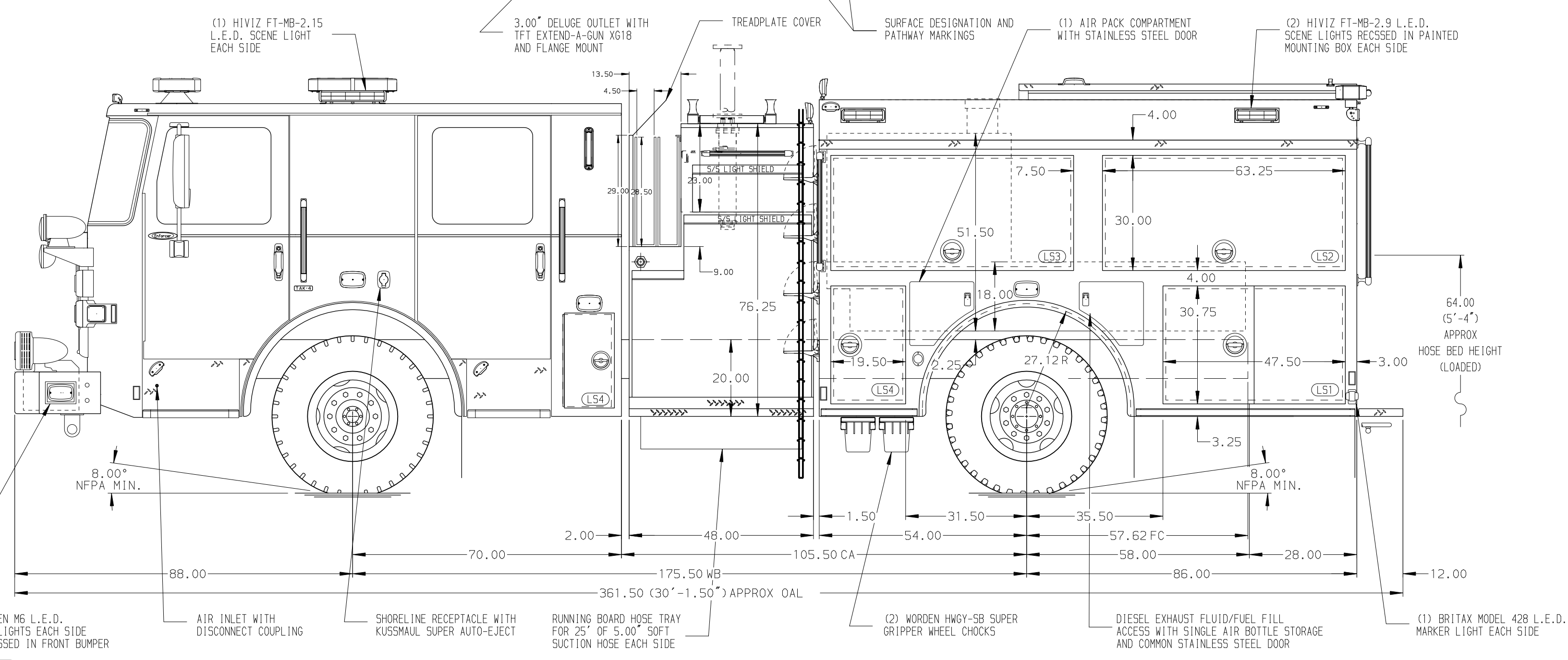


- HOSEBED CAPACITIES**
- ① - 250' OF 2.50" D.J. POLY HOSE
 - ② - 200' OF 2.50" D.J. POLY HOSE
 - ③ - 300' OF 3.00" D.J. POLY HOSE
 - ④ - 1200' OF 5.00" D.J. POLY HOSE
 - ⑤ - 200' OF 1.75" D.J. POLY HOSE (IN POLY TRAY)
 - ⑥ - 250' OF 1.75" D.J. POLY HOSE (IN POLY TRAY)



ALUMINUM BODY

NOTE
DIMENSIONS SHOWN ARE APPROXIMATE AND ARE SUBJECT TO MINOR DEVIATIONS AS MAY OCCUR OR BE NECESSARY IN CONSTRUCTION. MINOR DETAILS NOT SHOWN.

- 1. BATTERY CHARGER LOCATED BEHIND DRIVER'S SEAT
- 2. BATTERY CHARGER INDICATOR LOCATED ON DRIVER'S SEAT RISER
- 3. DUAL L.E.D. LIGHT STRIPS LOCATED IN HOSE BED
- 4. REVERSED HINGED DOOR ON COMPARTMENT LS4
- 5. DRIP PAN GUARD FOR ROLL-UP DOOR LOCATED B1
- 6. PARTITION BETWEEN COMPARTMENTS LS1/B1 AND RS1/B1
- 7. 120V DUPLEX RECEPTACLE LOCATED IN COMPARTMENT LS1, LS2, LS3, RS1 AND RS2

REV	DATE	BY	CH	ENFORCER
24JUN21	CDU	PHA		
11MAY21	CDU	PHA		
15MAR21	CDU	PHA		

		JOB NO.	36100
		SCALE	DATE
TITLE	2000-D-625P, 625 GAL WATER TANK, 140" FDLER BODY (2) CROSSLAYS, LADDER RACK, DELUGE, BOOSTER REEL		
FOR	WELDON FIRE COMPANY GLENSIDE, PENNSYLVANIA		
DWG NO.	36100AD		
MAKE	PIERCE	DRAWN BY	JJB
MODEL		CHECKED BY	CDU
		SHEET SIZE	SHEET NO.
		D	1 OF 1