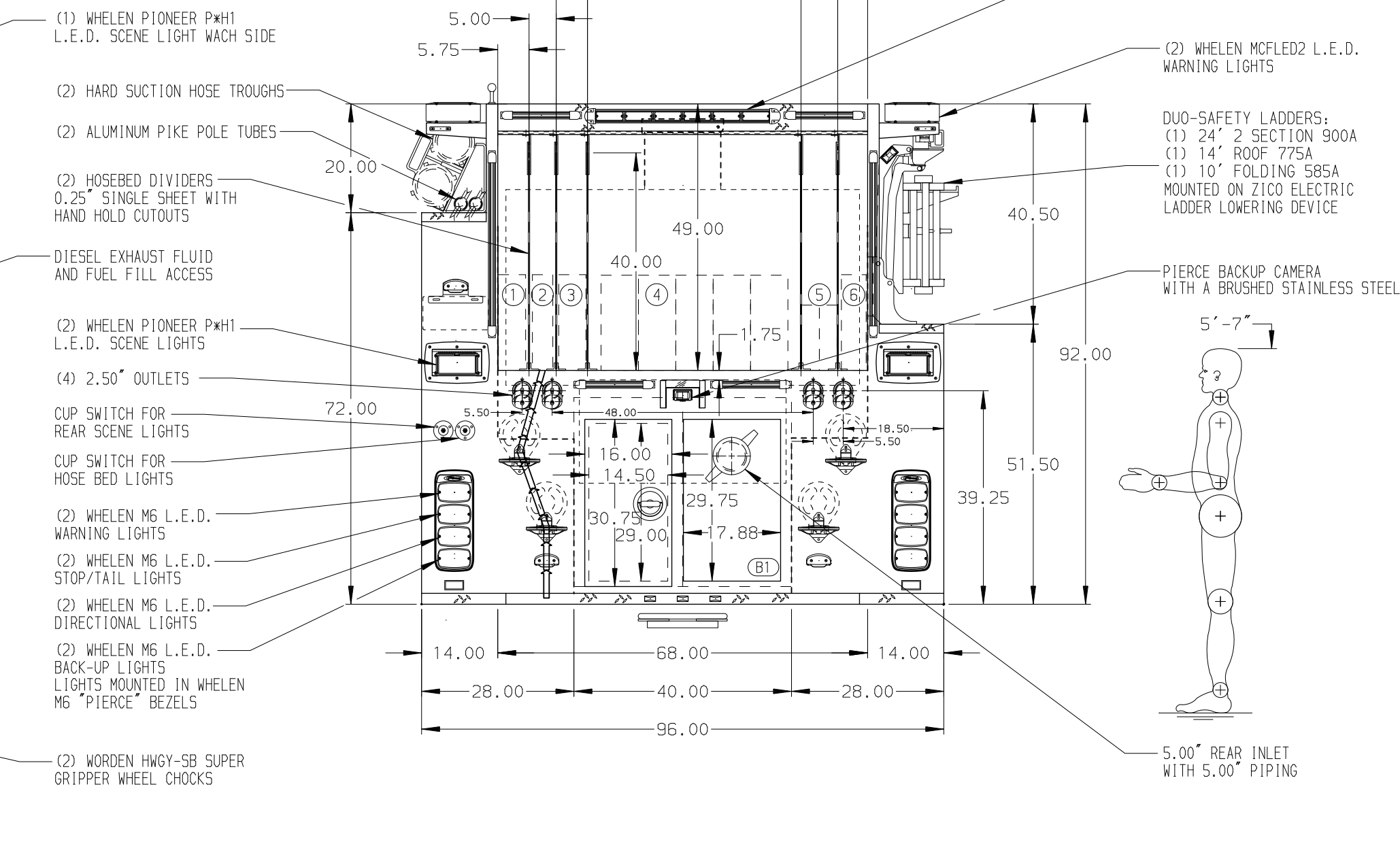
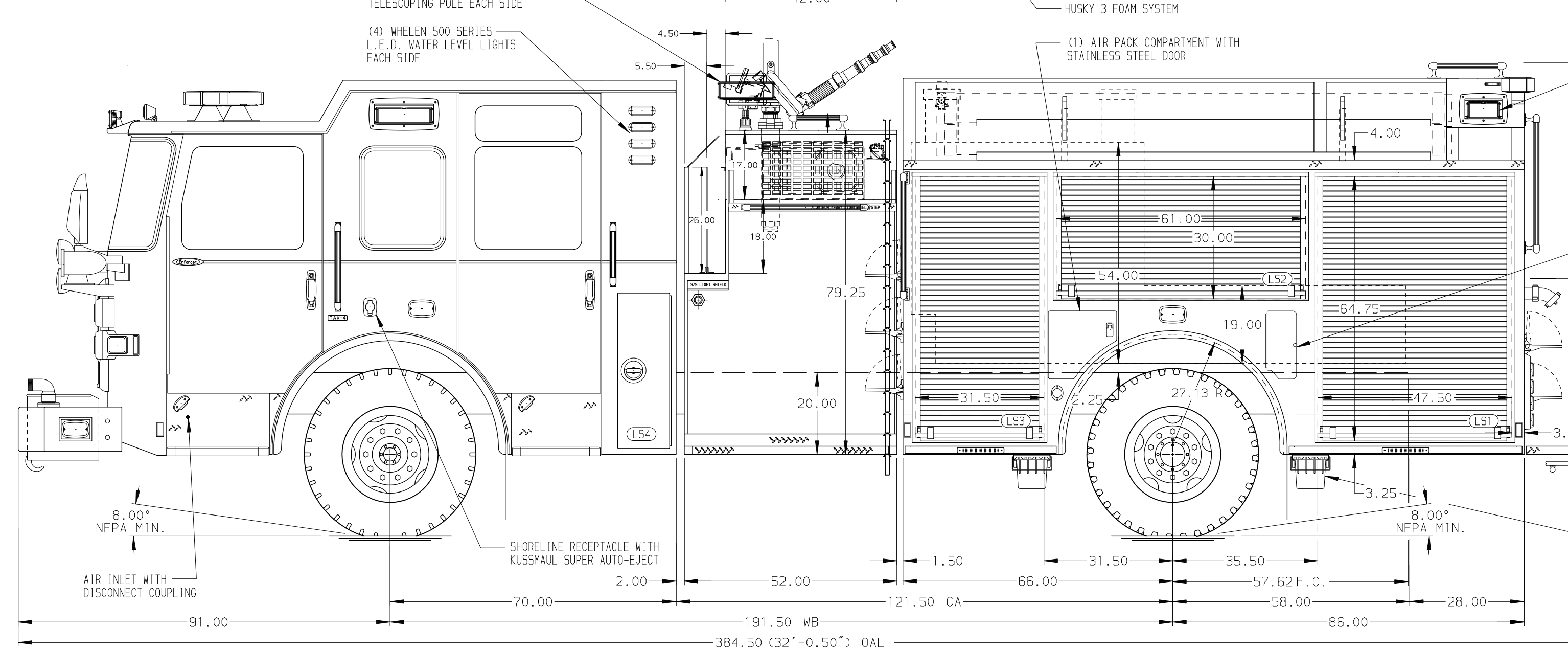


- HOSEBED CAPACITIES
- ① 300' OF 3.00" MERCEDES AQUAFLOW HOSE
 - ② 300' OF 2.00" MERCEDES AQUAFLOW HOSE
 - ③ 300' OF 3.00" MERCEDES AQUAFLOW HOSE
 - ④ 1200' OF 4.00" MERCEDES MEGAFLOW HOSE
 - ⑤ 400' OF 1.75" MERCEDES AQUAFLOW HOSE
 - ⑥ 300' OF 2.50" MERCEDES AQUAFLOW HOSE



ALUMINUM BODY

SIDE ROLL AND FRONTAL IMPACT PROTECTION

NOT BATTERY CHARGER LOCATED BEHIND DRIVER'S SEAT
DIMENSIONS SHOWN ARE APPROXIMATE AND ARE SUBJECT TO MINOR DEVIATIONS AS MAY OCCUR OR BE NECESSARY IN CONSTRUCTION.
MINOR DETAILS NOT SHOWN.

1. ONSPOT AUTOMATIC TIRE CHAINS TO BE PROVIDED AT REAR
2. BATTERY CHARGER INDICATOR LOCATED ON DRIVER'S SEAT RISER
3. BRUSHED STAINLESS STEEL SCUFFPLATE INSIDE EACH BODY COMPARTMENT DOORS
4. DRIP PAN GUARD FOR ROLL-UP DOOR LOCATED IN COMPARTMENTS LS1,LS2,LS3,RS1,RS3
5. ONE FULL WIDTH/DEPTH ADJUSTABLE SHELF IN COMPARTMENT LS3,RS1,RS3
6. ONE FLOOR MOUNTED SLIDE-OUT TRAY IN COMPARTMENT LS3,RS3
7. SWING-OUT TOOL BOARD WITH PEGBOARD PATTERN IN COMPARTMENT LS2
8. REMOVABLE FILTER FOR ALL BODY COMPARTMENTS WITH LOUVERS
9. TOOL BOARD MOUNTED ON THE BACK WALL OF COMPARTMENT LS3
10. CIRCUIT BREAKER PANEL IN COMPARTMENT LS2

REV	DATE	BY	CH	ENFORCER	CHASSIS DATA	TITLE
19JUL21	JWO	COL			MAKE	1500-D-780P, 750 GAL OF WATER W/ 30 GAL FOAM CELL
17JUN21	JWO	COL			PIERCE	152" BODY, Z100 LADDER RACK, (2) CROSSLAYS
24MAR21	CDU	PHA			MODEL	CHAMBERSBURG FIRE DEPARTMENT
						CHAMBERSBURG, PENNSYLVANIA
						DWG NO. 36072AD

Pierce MANUFACTURING INC.

JOB NO. 36072

SCALE 1:24 DATE

DRAWN BY JWO 25FEB21

CHECKED BY CDU 16MAR21

SHEET SIZE D SHEET NO. 1 OF 1