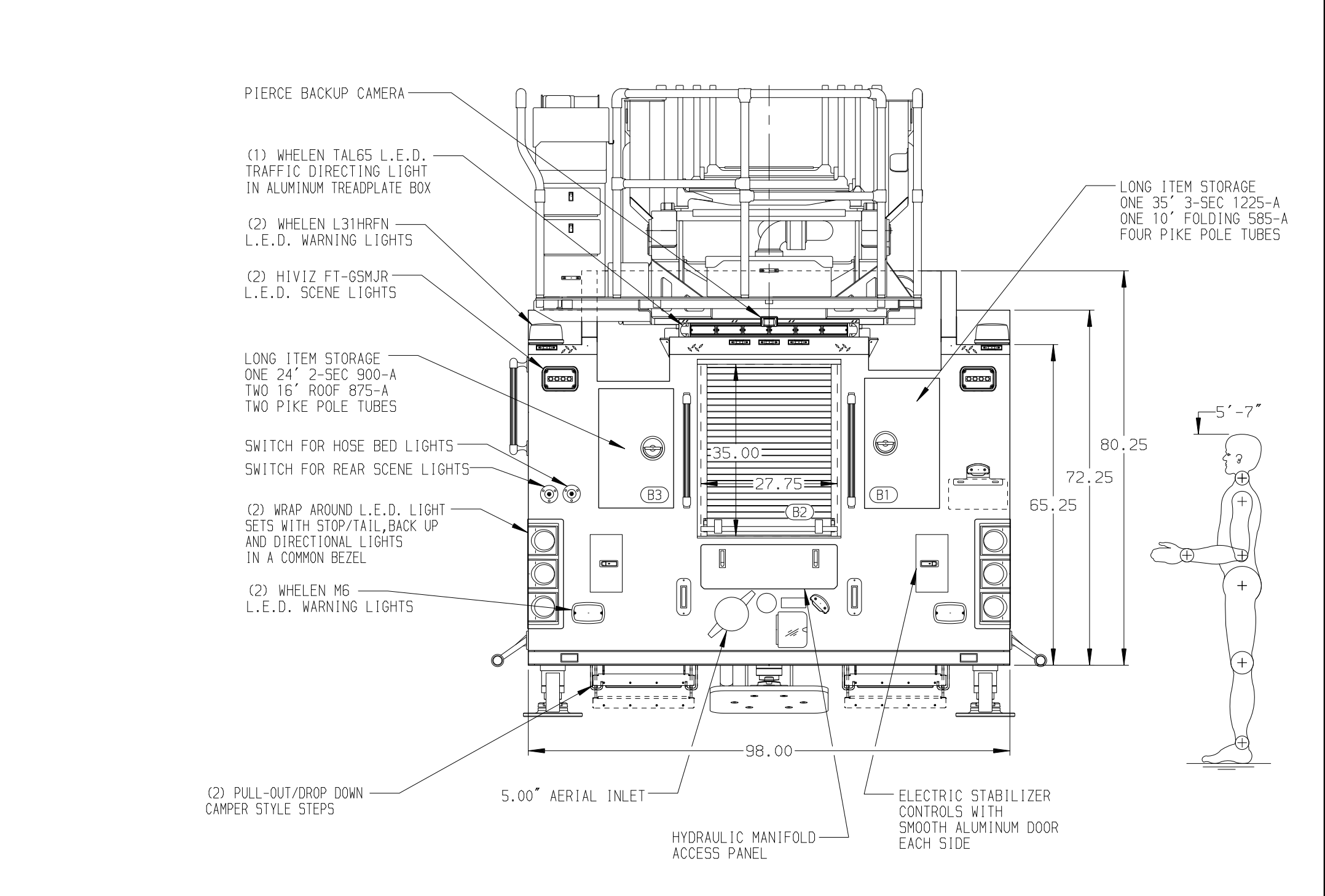


<p>BODY</p> <p>107' ASL Aluminum Body</p> <p>COMPT, LEFT SIDE FRONT Full Height RollUp Forward</p> <p>COMPT, LEFT SIDE REAR Full Height RollUp Rearward</p> <p>COMPT, RIGHT SIDE FRONT Full Height RollUp Forward</p> <p>COMPT, RIGHT SIDE REAR Full Height RollUp Rearward</p>	<p>WATER TANK</p> <p>500 Gallon Poly Water Tank</p> <p>Foam System Plumbing for Future Husky Foam System</p> <p>Foam Cell 20 Gallon Foam Cell, Non Reduced Water</p>
--	---



<p>CHASSIS Enforcer Chassis ENGINE 500 HP Cummins X12 Engine</p>	<p>CAB 7010 Enforcer Notched Cab BUMPER 19\"/> </p>	<p>AXLE, FRONT, CUSTOM 22,800 Lb TAK-4 Axle AXLE, REAR 33,500 Lb Meritor Axle</p>	<p>TRANSMISSION Allison 5th Gen, 4500 EVS P</p>	<p>PUMPHOUSE 52\"/> </p>	<p>CROSSLAYS, 1.50\" (2) 1.50\"/> <p>CROSSLAYS, 2.50\" (1) 2.50\"/> </p></p>	<p>SPEEDLAYS Speedlays Not Required GENERATOR Generator Not Required</p>	<p>SAFETY Side Roll and Frontal Impact Protection</p>	<p>CUSTOMER APPROVAL</p> <p>APPROVED BY: _____ DATE: _____</p>	<p>Pierce MANUFACTURING INC.</p>	<p>JOB NO. 36064</p> <p>SCALE 1:24</p> <p>DATE</p>
<p>NOTE</p> <p>DIMENSIONS SHOWN ARE APPROXIMATE AND ARE SUBJECT TO MINOR DEVIATIONS AS MAY OCCUR OR BE NECESSARY IN CONSTRUCTION. MINOR DETAILS NOT SHOWN.</p>	<p>1. ONE 1.50\"/> <p>2. SHOVELLINE RECEPTACLE WITH KUSSMAUL SUPER AUTO-EJECT LOCATED ON DRIVER SIDE OF THE CAB</p> <p>3. AIR INLET WITH DISCONNECT COUPLING IN THE DRIVER SIDE STEPWELL</p> <p>4. BATTERY CHARGER LOCATED BEHIND DRIVER SEAT</p> <p>5. BATTERY CHARGE INDICATOR LOCATED ON DRIVERS SIDE CAB</p> <p>6. DUAL L.E.D. LIGHT STRIPS LOCATED IN HOSE BED</p> <p>7. SIX ADJUSTABLE SHELVES LOCATED IN COMPARTMENTS PER SHOP ORDER</p> <p>8. FOUR FLOOR MOUNTED SLIDE-OUT TRAYS LOCATED IN COMPARTMENTS PER SHOP ORDER</p> <p>9. NON-RAISED AERIAL PEDESTAL</p> </p>	<p>10. 1500 GPM HIGH FLOW WATERWAY</p> <p>11. LIMITED RETRACTION NOT REQUIRED</p> <p>12. MOUNTING PROVISIONS FOR FRONT INLET</p> <p>13. RUNG LIGHTING ON AERIAL LADDER</p>	<p>107' ASCENDANT AERIAL LADDER AND BODY ASSEMBLY</p> <p>PIERCE FIELD UNIT APPLETON, WI</p> <p>DWG NO. 36064AD</p>	<p>DRAWN BY TKA</p> <p>CHECKED BY THS</p> <p>SHEET SIZE D</p> <p>SHEET NO. 1 OF 1</p>						