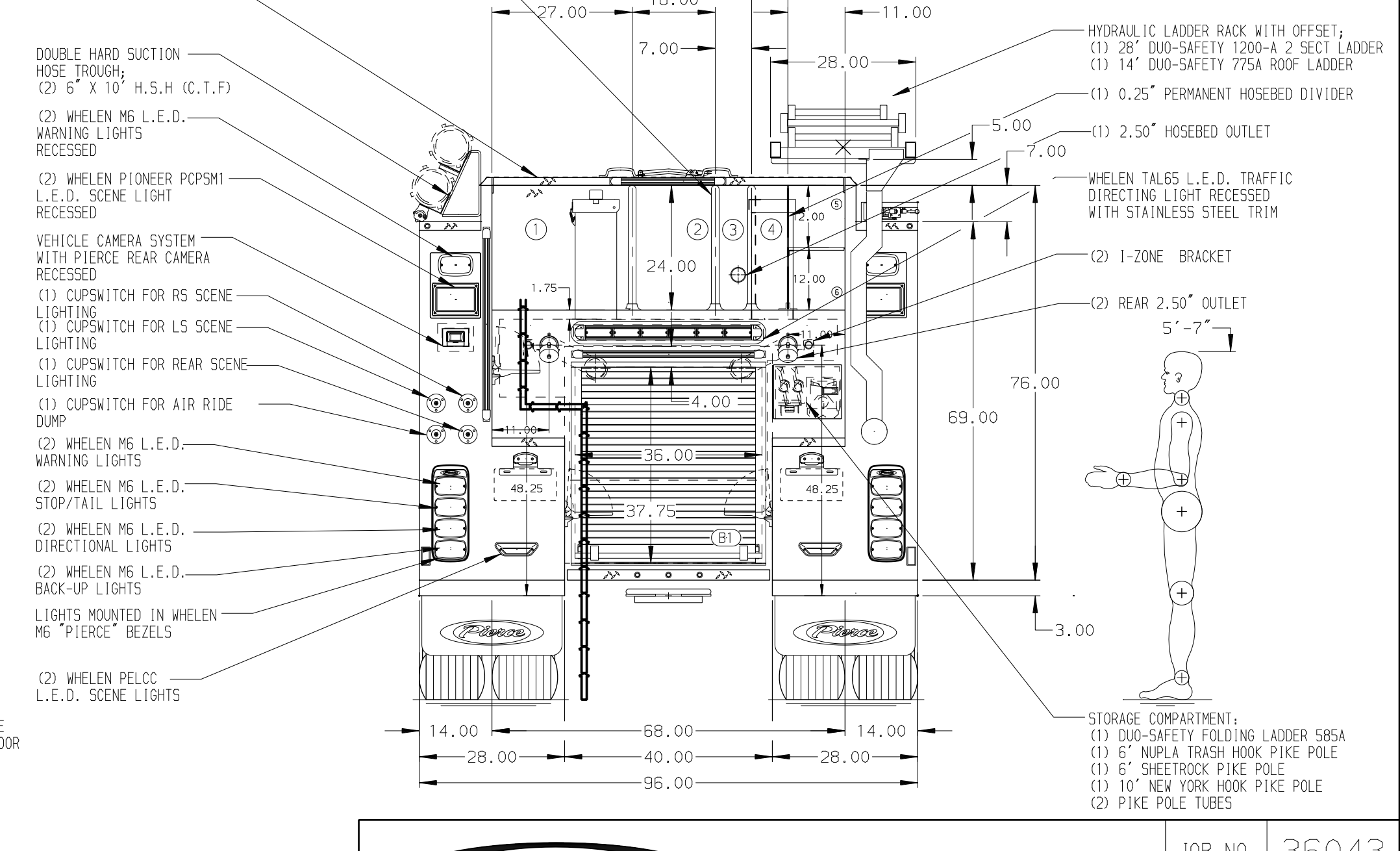
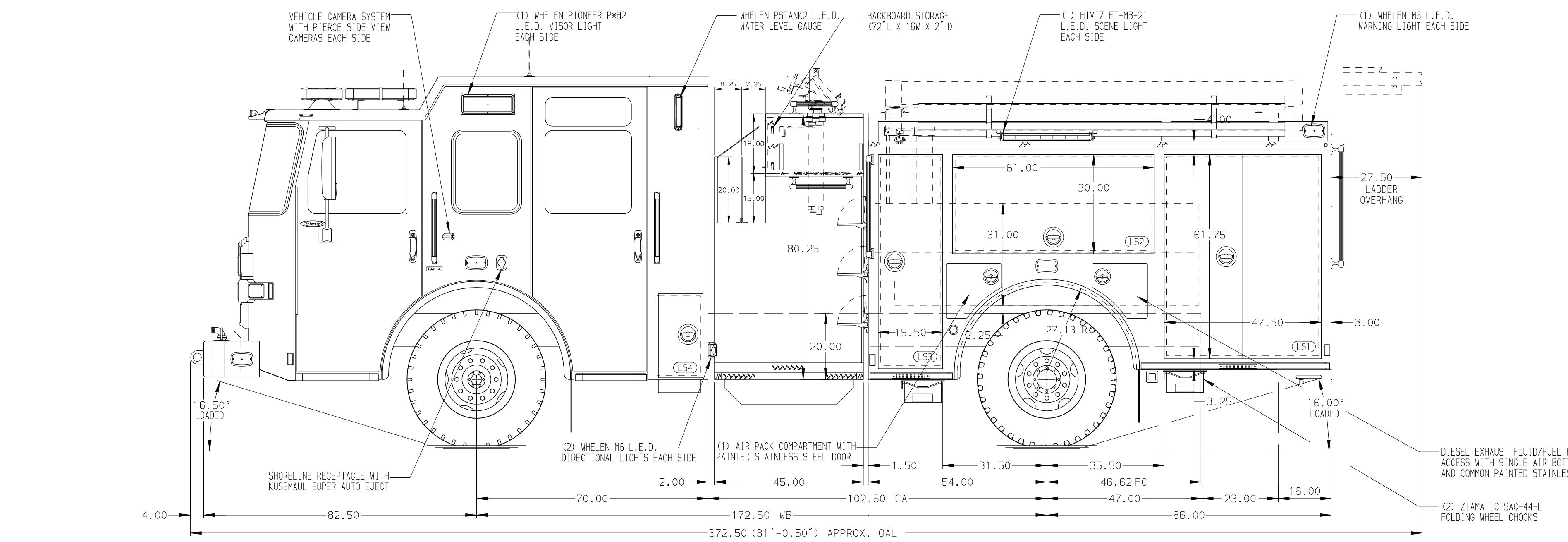


- HOSEBED CAPACITIES**
- ① 900' OF 4.00" D.J. POLY HOSE
  - ② 800' OF 2.50" D.J. POLY HOSE
  - ③ 150' OF 2.50" D.J. POLY HOSE (PRECONNECTED)
  - ④ 300' OF 1.50" D.J. POLY HOSE
  - ⑤ 100' OF 1.75" D.J. POLY HOSE
  - ⑥ 100' OF 1.75" D.J. POLY HOSE



**GALVANNEAL BODY** (SIDE ROLL AND FRONTAL IMPACT PROTECTION)

**NOTE**  
DIMENSIONS SHOWN ARE APPROXIMATE AND ARE SUBJECT TO MINOR DEVIATIONS AS MAY OCCUR OR BE NECESSARY IN CONSTRUCTION. MINOR DETAILS NOT SHOWN.

- 1. AIR OUTLET WITH SHUT-OFF VALVE LOCATED ON LEFT SIDE OPERATOR PANEL
- 2. BATTERY CHARGER LOCATED BEHIND DRIVER'S SEAT
- 3. BATTERY CHARGER INDICATOR LOCATED ON DRIVER'S SEAT RISER
- 4. DUAL L.E.D. LIGHT STRIPS LOCATED IN HOSE BED
- 5. L.E.D. DUAL LIGHT STRIPS LOCATED IN HOSE BED PER SHOP ORDER
- 6. REVERSED HINGED DOOR ON COMPARTMENTS; LS3 & RS3
- 7. BRUSHED STAINLESS STEEL SCUFFPLATE INSIDE EACH BODY COMPARTMENT DOORS
- 8. DRIP PAN GUARD FOR ROLL-UP DOOR LOCATED IN COMPARTMENT B1
- 9. ONE FLOOR MOUNTED SLIDE-OUT TRAY IN COMPARTMENT B1
- 10. ONE ADJUSTABLE FULL WIDTH/DEPTH SHELF WITH SPECIAL SIDE HEIGHTS IN COMPARTMENTS; LS3,RS1,RS2,RS3 & B1 TWO IN LS1 & RS1
- 11. SLIDE-OUT TOOL BOARD WITH PEGBOARD PATTERN IN COMPARTMENTS; LS1 & LS2
- 12. CTECH (3) DRAWER ASSEMBLY IN COMPARTMENTS; LS3
- 13. PARTITION BETWEEN COMPARTMENTS LS1/B1 AND RS1/B1
- 14. ONE VERTICAL PARTITION IN COMPARTMENT LS1
- 15. ONE REVERSED HINGED DOOR ON COMPARTMENT LS1
- 16. 120V DUPLEX RECEPTACLE LOCATED IN COMPARTMENT LS1
- 17. ONE BRUSHED 5/5 SCUFFPLATE TO BE LOCATED ON THE BOTTOM OF DOOR ON COMPARTMENTS; LS1,LS2,LS3,RS1,RS2 & RS3
- 18. ALUM PEG BOARD MOUNTED IN COMPARTMENTS; LS1,LS2,LS3 & RS1
- 19. ONE ZIAMTIC SAC-44-E FOLDING WHEEL CHOCK & MOUNT TO BE SENT LOOSE

		JOB NO.	36043
		SCALE	1:24
<b>MANUFACTURING INC.</b>		DATE	8MAR21
		DRAWN BY	JRC
<b>TITLE</b> 1500-D-515P, 500G WATER 15G FOAM ,DELUGE, (2) X-LAYS 140" PUMPER BODY, HYDRAULIC LADDER RACK		CHECKED BY	PHA
		DATE	9MAR21
<b>FOR</b> CENTRAL MARIN FIRE AUTHORITY CORTE MADERA, CALIFORNIA		SHEET SIZE	SHEET NO.
		DWG NO.	36043AD
<b>REV</b>		DATE	BY
<b>ENFORCER</b>		DATE	BY