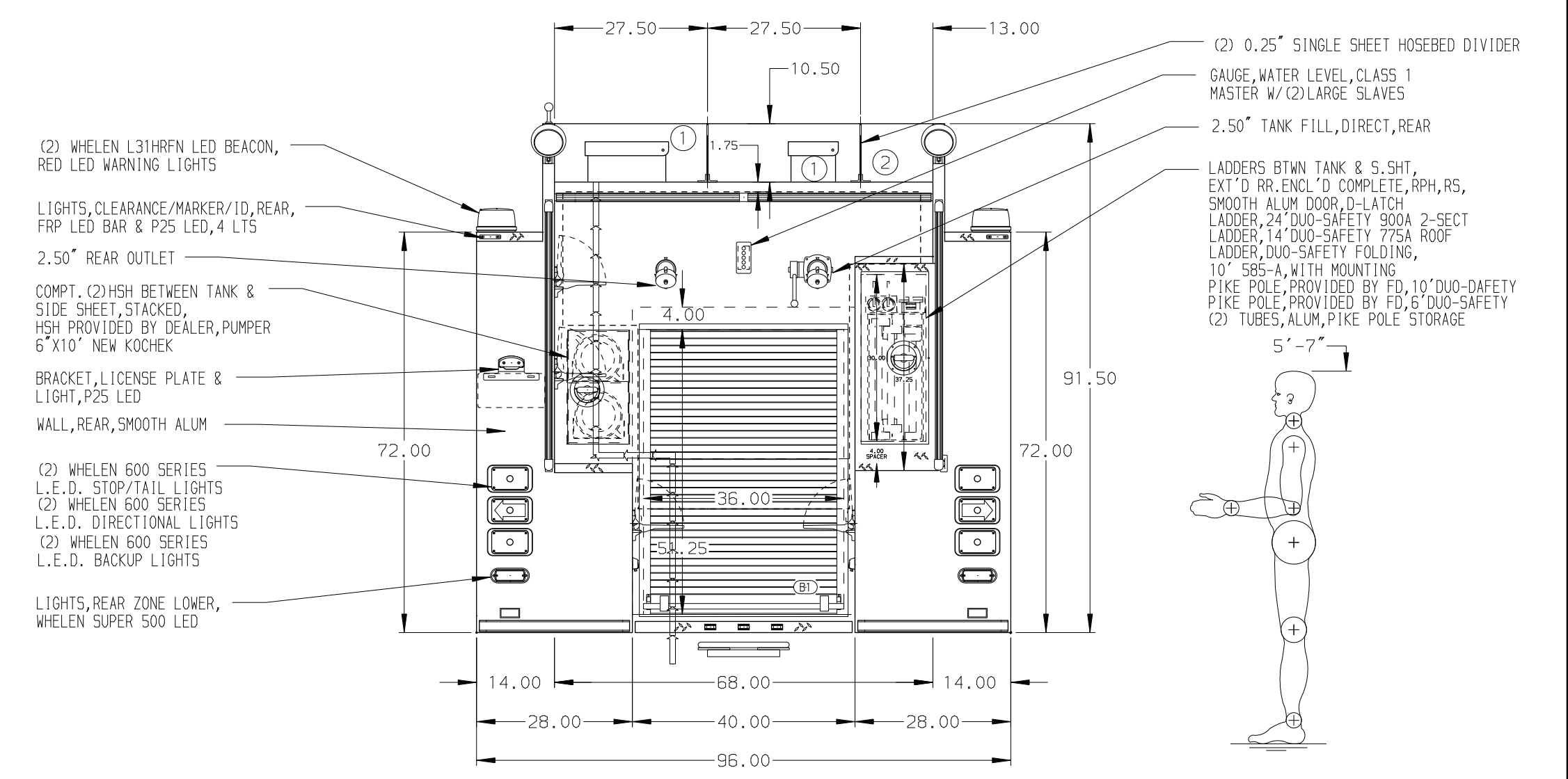
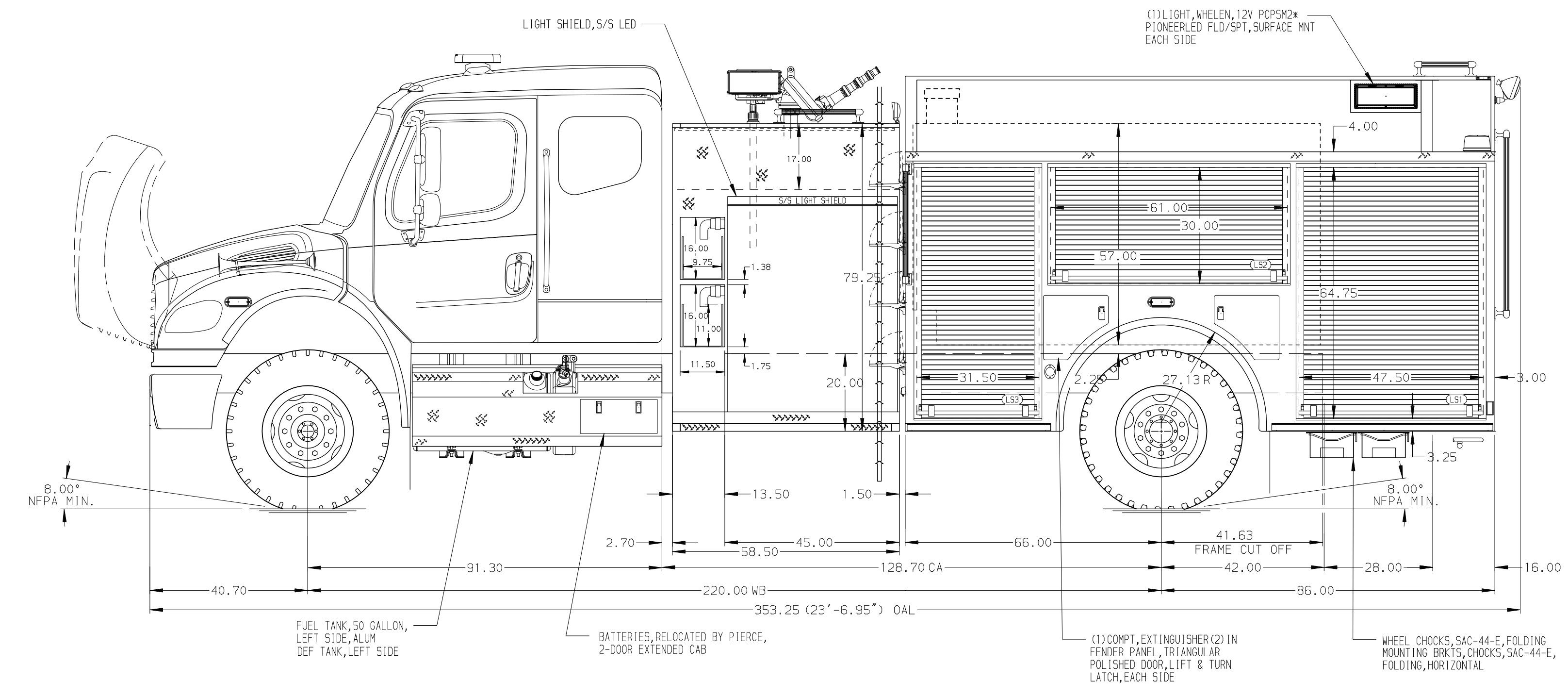


- HOSEBED CAPACITIES**
- ① 1500' OF 2.50\"/>



NOTE
DIMENSIONS SHOWN ARE APPROXIMATE AND ARE SUBJECT TO MINOR DEVIATIONS AS MAY OCCUR OR BE NECESSARY IN CONSTRUCTION. MINOR DETAILS NOT SHOWN.

REV	DATE	BY	CH	MODEL
21JUN21	JAF	NAS		M2-106

		JOB NO.	36038
		SCALE	DATE
TITLE	1250-D-1000 POLY, 30 FOAM, 152\"/>		
FOR	FAYETTE COUNTY TENNESSEE SOMERVILLE, TENNESSEE	DRAWN BY	RHU
DWG NO.	36038AD	CHECKED BY	RWI
		SHEET SIZE	SHEET NO.
		D	1 OF 1