

PUMPER BODY
Medium Aluminum 2nd Gen Pumper

CHASSIS
Sober FR Chassis

CHASSIS AXLE, FRONT, CUSTOM
18,000 Lb Dana Axle

AXLE, REAR
24,000 Lb Dana Axle

ENGINE
400 HP Cummins L9 Engine

TRANSMISSION
Allison 5th Gen, 3000 EVS P

BUMPER
13" Extended Painted Steel

CAB
6010 Sober FR Cab

BODY WATER TANK
750 Gallon New York Style Water Tank

COMPT, PUMPER, REAR
30.75" FF RollUp Rear Compt

COMPT, PUMPER, LEFT SIDE
152" RollUp Full Height Front & Rear FDLR

COMPT, PUMPER, RIGHT SIDE
152" RollUp Full Height Front & Rear FDLR

FIRE SUPPRESSION PUMPHOUSE
52" Control Zone Side Mount

PUMP
1500 GPM Waterous CSU

CROSSLAYS, 1.50"
(2) 1.50" Standard Capacity

CROSSLAYS, 2.50"
(1) 2.50" Standard Capacity

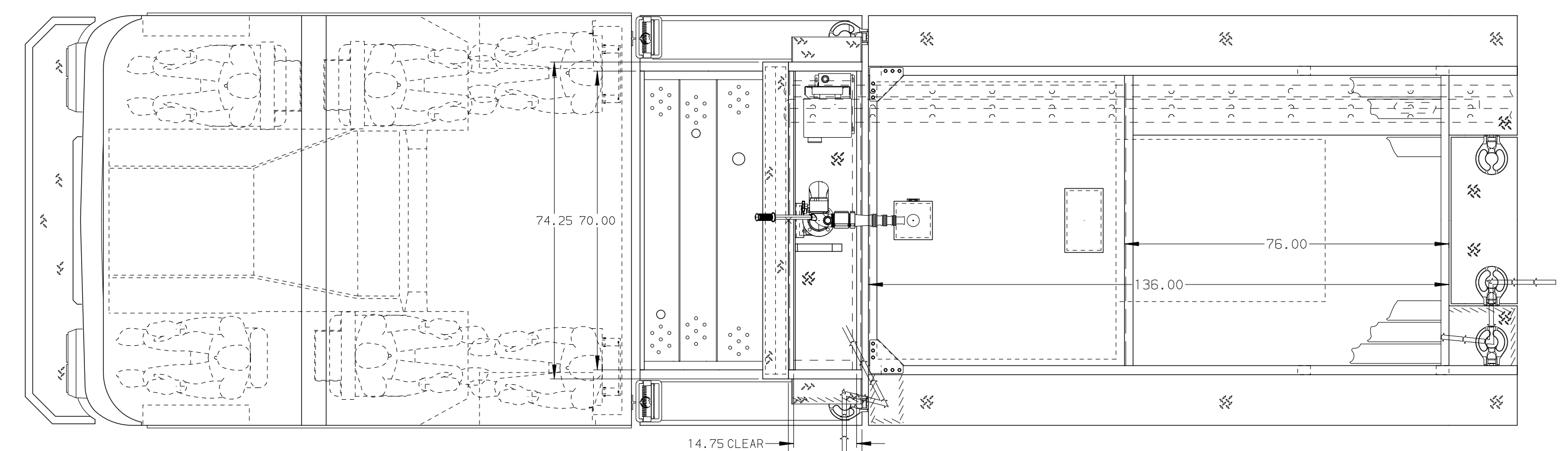
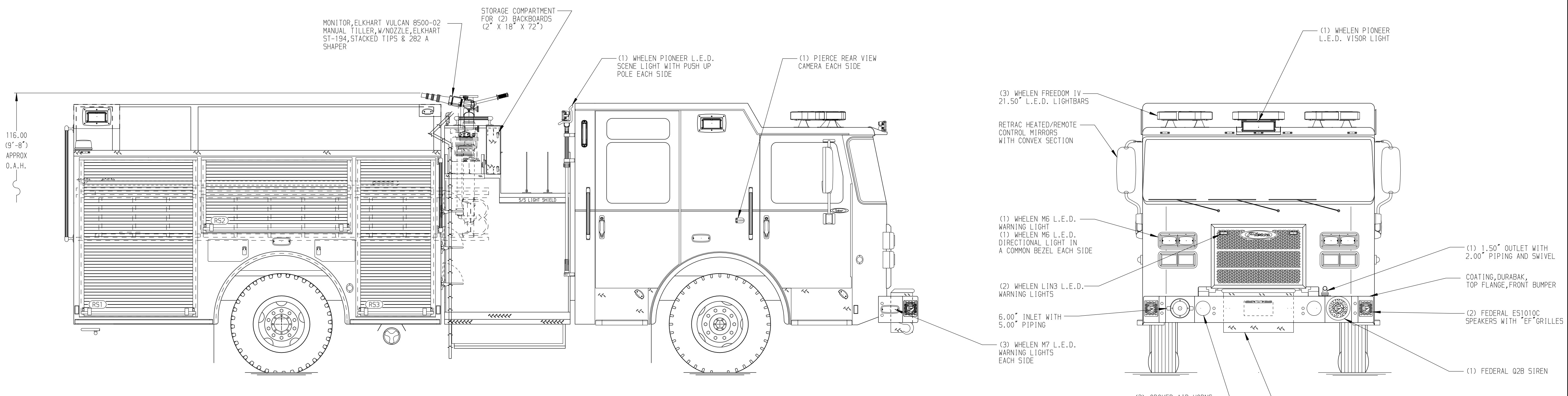
SPEEDLAYS
SpeedLays Not Required

GENERATOR
Generator Not Required

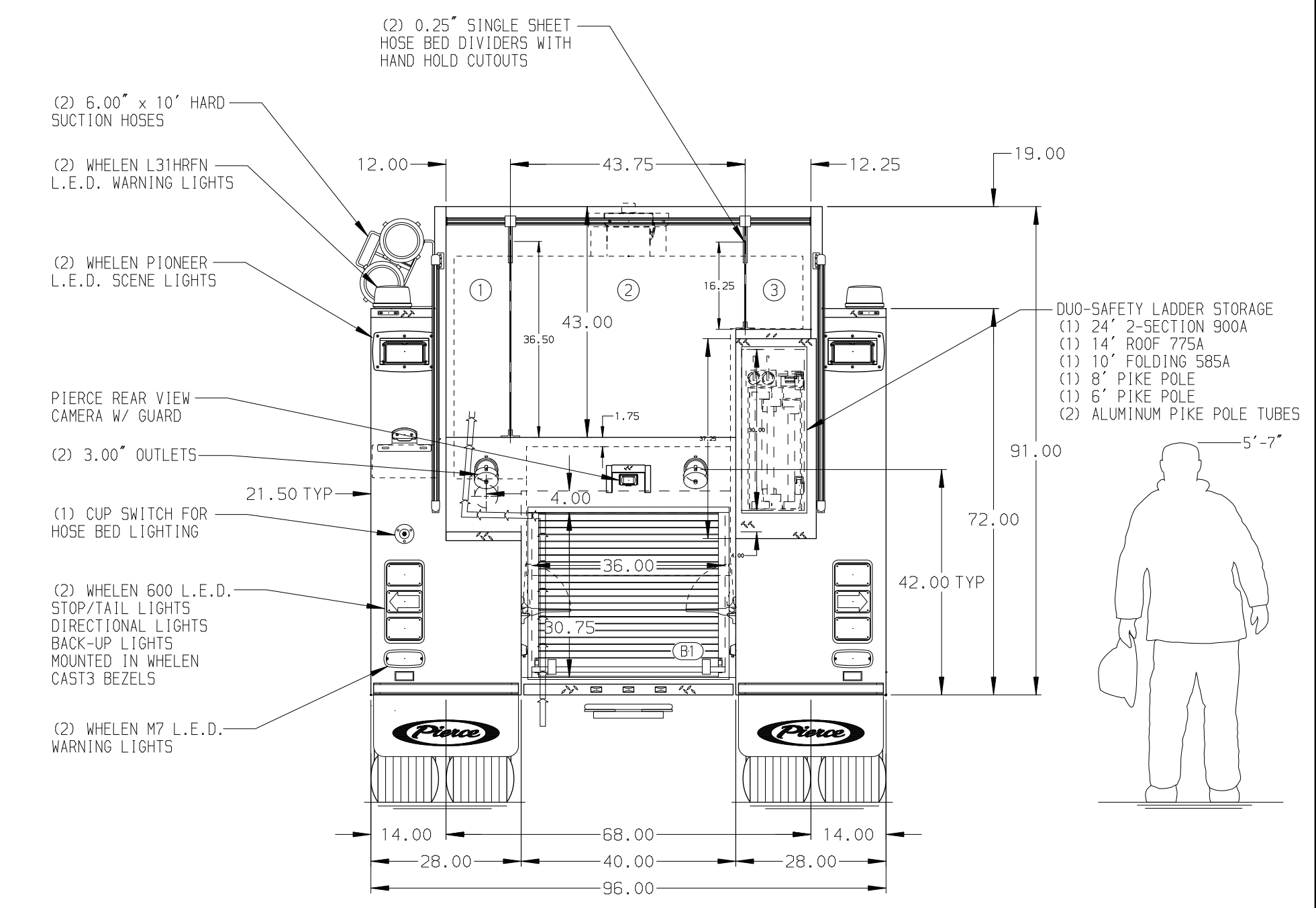
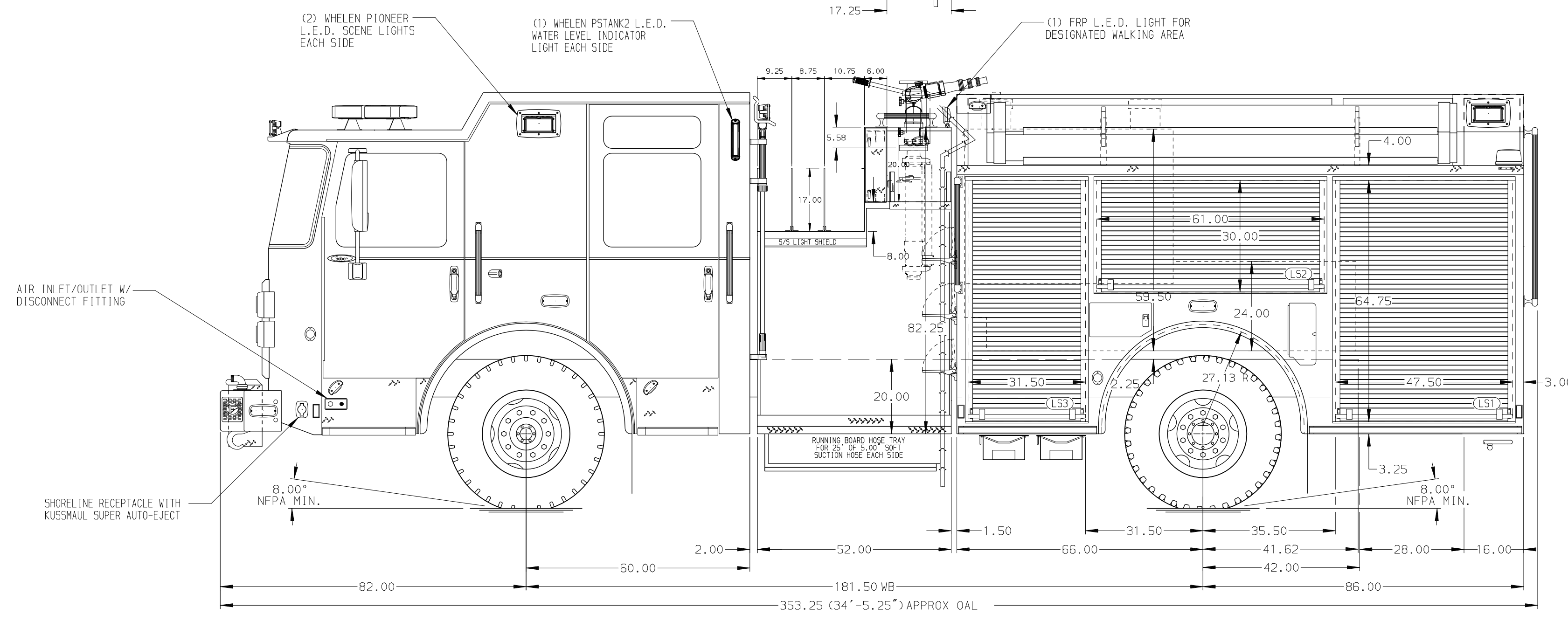
Foam System
Husky 3

Foam Cell
25 Gallon Foam Cell, Not Reduced Water

NOTE
DIMENSIONS SHOWN ARE APPROXIMATE AND ARE SUBJECT TO MINOR DEVIATIONS AS MAY OCCUR OR BE NECESSARY IN CONSTRUCTION. MINOR DETAILS NOT SHOWN.



HOSEBED CAPACITY	
BED 1	400' OF 3.00" D.J. POLY HOSE
BED 2	1000' OF 5.00" D.J. POLY HOSE
BED 3	200' OF 3.00" D.J. POLY HOSE



MAXIMUM O.A.H. 116.00"

MAXIMUM O.A.L. 354.00"

Pierce MANUFACTURING INC.		JOB NO.	34810
		SCALE	1:24
		TITLE	Pierce Pumper Approval Drawing
		DATE	13JAN21
		DRAWN BY	MMF
		CHECKED BY	COL
		SHEET SIZE	D
		SHEET NO.	1 OF 1
		FOR	US Army
		DWG NO.	36026AD
REV	DATE	BY	CH
19MAY21	JAF	NAS	PIERCE
26FEB21	JLA	NAS	MODEL
			SABER FR