

PUMPER BODY

Medium Aluminum 2nd Gen Pumper

CHASSIS

Sober FR Chassis

CHASSIS AXLE, FRONT, CUSTOM

18,000 Lb Dana Axle

AXLE, REAR

27,000 Lb Dana Axle

ENGINE

450 HP Cummins L9 Engine

TRANSMISSION

Allison 5th Gen, 3000 EVS P

BUMPER

26" Extended Painted Steel

CAB

7010 Sober FR Cab

BODY

WATER TANK

1000 Gallon New York Style Water Tank

COMPT, PUMPER, REAR

30.75" FF RollUp 41.88" Deep Flush Rear Compt

COMPT, PUMPER, LEFT SIDE

152" RollUp Full Height Front & Rear FDLR

COMPT, PUMPER, RIGHT SIDE

152" RollUp, 3/4 Height Front & Rear, Lap Broom, FDLR

FIRE SUPPRESSION PUMPHOUSE

45" Control Zone Top Mount

PUMP

2000 GPM WATEROUS CMU

CROSSLAYS, 1.50"

(1) 1.50" Special Capacity

CROSSLAYS, 2.50"

(1) 2.50" Standard Capacity

SPEEDLAYS

Speedlays Not Required

GENERATOR

Generator Not Required

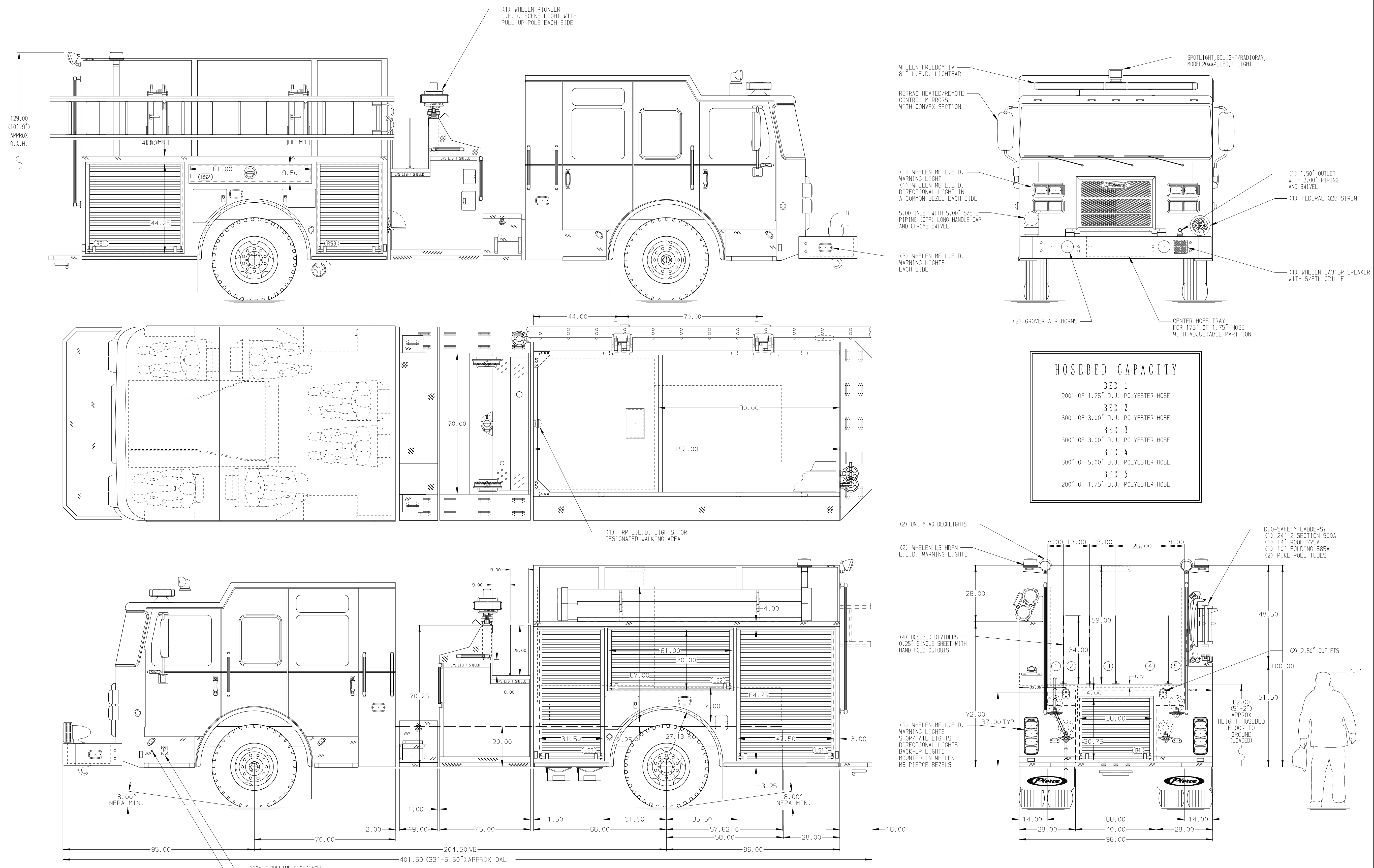
Foam System

Foam System Not Required

Foam Cell

Foam Cell Not Required

NOTE
DIMENSIONS SHOWN ARE APPROXIMATE AND ARE SUBJECT TO MINOR DEVIATIONS AS MAY OCCUR OR BE NECESSARY IN CONSTRUCTION. MINOR DETAILS NOT SHOWN.



HOSEBED CAPACITY

BED 1	200' OF 1.75" D.J. POLYESTER HOSE
BED 2	600' OF 3.00" D.J. POLYESTER HOSE
BED 3	600' OF 3.00" D.J. POLYESTER HOSE
BED 4	600' OF 5.00" D.J. POLYESTER HOSE
BED 5	200' OF 1.75" D.J. POLYESTER HOSE

		JOB NO.	36025
		SCALE	DATE
		1:24	
TITLE		Pierce Pumper Approval Drawing	
FOR		Indianapolis Fire Department	
DRAWN BY		MMF	
CHECKED BY		COL	
SHEET SIZE		SHEET NO.	
D		1 OF 1	
DWG NO.		36025AD	

REV	DATE	BY	CH	SABER FR
08APR21		MMF	CAG	MAKE
12FEB21		JLA	CAG	PIERCE
22DEC20		COL	MMF	MODEL