

PUMPER BODY

Medium Aluminum 2nd Gen Pumper

CHASSIS

Sober FR Chassis

CHASSIS AXLE, FRONT, CUSTOM

18,000 Lb Dana Axle

AXLE, REAR

24,000 Lb Dana Axle

ENGINE

450 HP Cummins L9 Engine

TRANSMISSION

Allison 5th Gen, 3000 EVS P

BUMPER

26" Extended Painted Steel

CAB

7010 Sober FR Cab

BODY WATER TANK

500 Gallon New York Style Water Tank

COMPT, PUMPER, REAR

30.75" FF RollUp 41.88" Deep Flush Rear Compt

COMPT, PUMPER, LEFT SIDE

152" RollUp Full Height Front & Rear FDLR

COMPT, PUMPER, RIGHT SIDE

152" RollUp, 3/4 Height Front & Rear, Lap Broom, FDLR

FIRE SUPPRESSION PUMPHOUSE

45" Control Zone Top Mount

PUMP

2000 GPM WATEROUS CMU

CROSSLAYS, 1.50"

(1) 1.50" Special Capacity

CROSSLAYS, 2.50"

(1) 2.50" Standard Capacity

SPEEDLAYS

Speedlays Not Required

GENERATOR

Generator Not Required

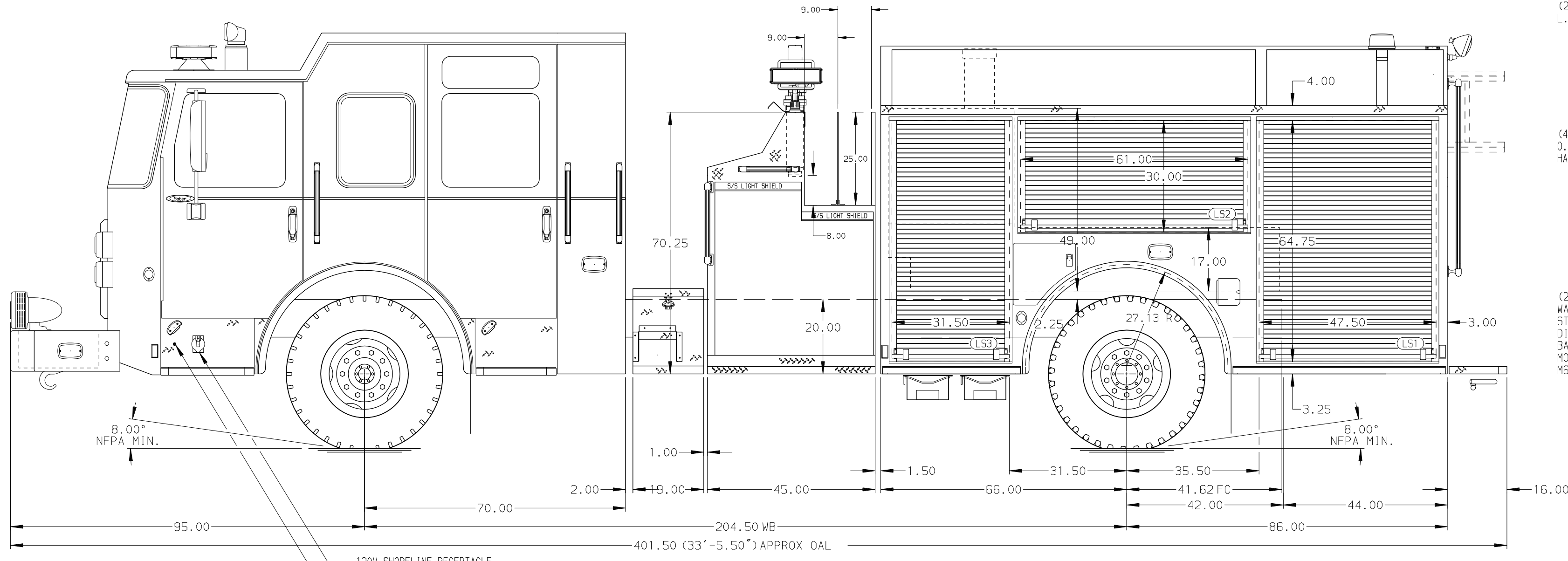
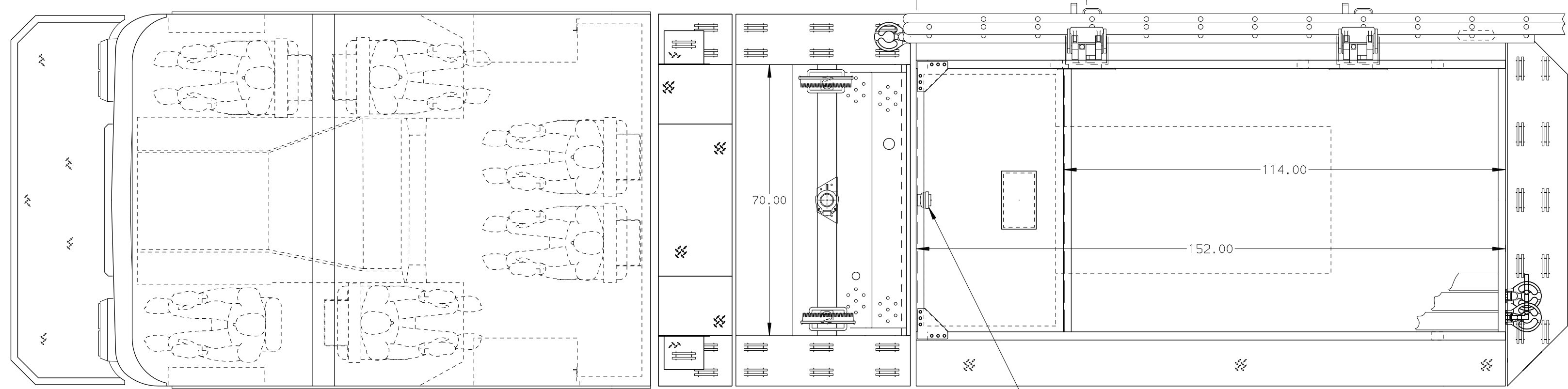
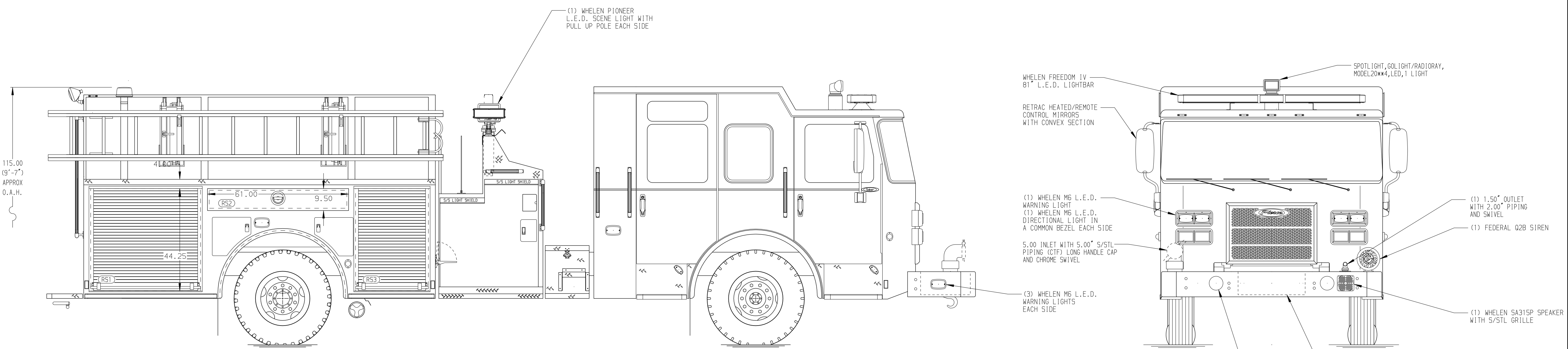
Foam System

Foam System Not Required

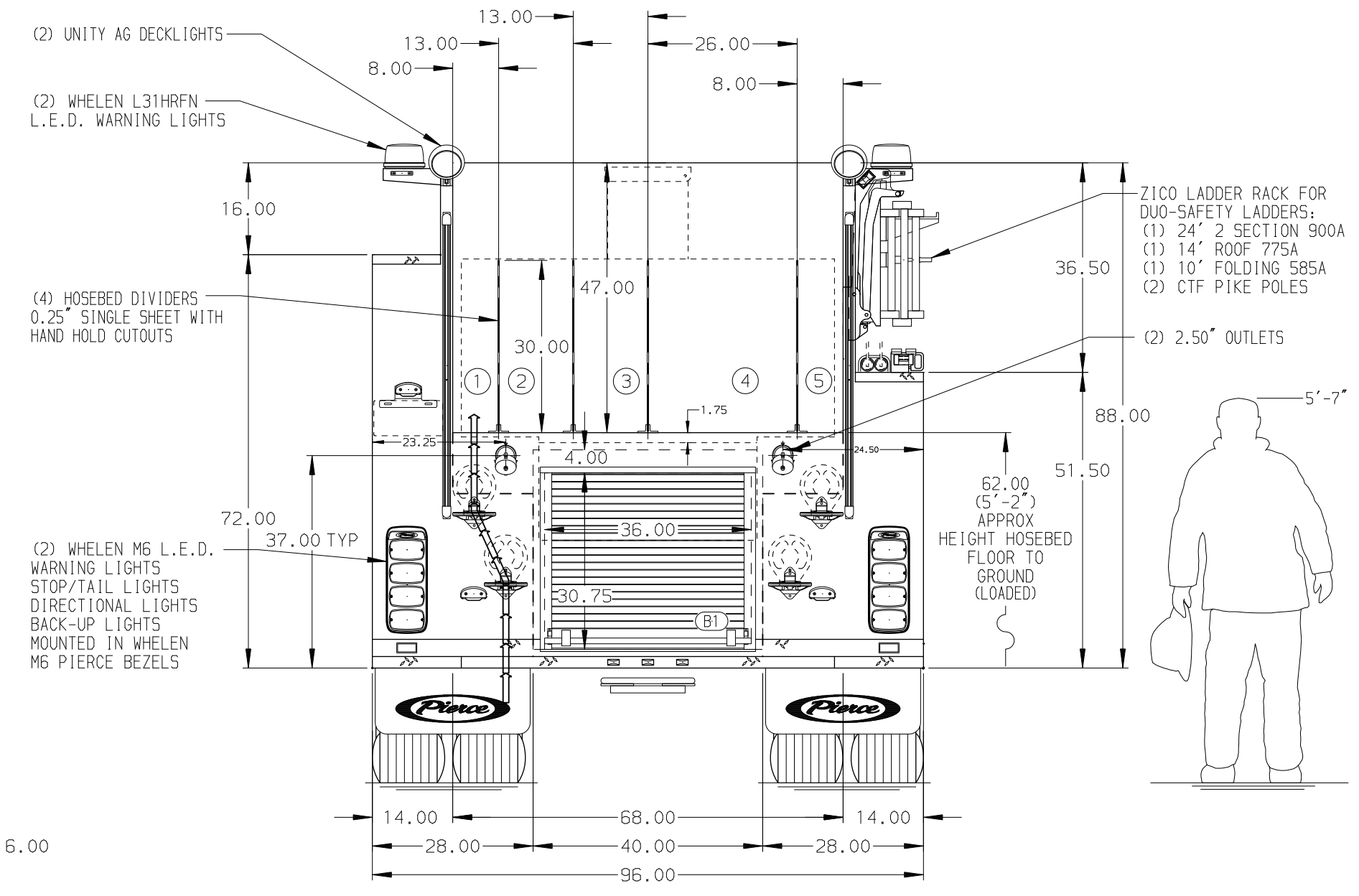
Foam Cell

Foam Cell Not Required

NOTE
DIMENSIONS SHOWN ARE APPROXIMATE AND ARE SUBJECT TO MINOR DEVIATIONS AS MAY OCCUR OR BE NECESSARY IN CONSTRUCTION. MINOR DETAILS NOT SHOWN.



HOSEBED CAPACITY	
BED 1	200' OF 1.75" D.J. POLYESTER HOSE
BED 2	600' OF 3.00" D.J. POLYESTER HOSE
BED 3	600' OF 3.00" D.J. POLYESTER HOSE
BED 4	600' OF 5.00" D.J. POLYESTER HOSE
BED 5	200' OF 1.75" D.J. POLYESTER HOSE



MAXIMUM O.A.H. 116.00"

		JOB NO.	36022
		SCALE	DATE
TITLE	Pierce Pumper Approval Drawing	DRAWN BY	MMF
FOR	Indianapolis Fire Department	CHECKED BY	COL
DWG NO.	36022AD	SHEET SIZE	SHEET NO.
REV	NO.	D	1 OF 1

REV	DATE	BY	CH	SABER FR
11MAR21	MMF	CAG		CHASSIS DATA
12FEB21	JLA	CAG		MAKE
22DEC20	COL	MMF		PIERCE
				MODEL
				SABER FR