

PUMPER BODY

Long Aluminum 2nd Gen Pumper

CHASSIS

Enforcer Chassis

CHASSIS AXLE, FRONT, CUSTOM

19,500 Lb TAK-4 Axle

AXLE, REAR

24,000 Lb Dana Axle

ENGINE

450 HP Cummins L9 Engine

TRANSMISSION

Allison 5th Gen, 3000 EVS P

BUMPER

19" Extended Painted Steel

CAB

7010 Enforcer Cab

BODY

WATER TANK

750 Gallon New York Style Water Tank
COMPT, PUMPER, REAR
 30.75" FF RollUp, 41.88" Deep Flush Rear Compt

COMPT, PUMPER, LEFT SIDE
 161" RollUp Full Height & Depth Front & Rear

COMPT, PUMPER, RIGHT SIDE
 161" RollUp Full Height Front & Rear FDLER

FIRE SUPPRESSION PUMPHOUSE

45" Control Zone Top Mount

PUMP

1500 GPM Waterous CSU

CROSSLAYS, 1.50"

1.50" Crosslays Not Required

CROSSLAYS, 2.50"

2.50" Crosslay Not Required

SPEEDLAYS

(2) 1.50" W/Troy Std. Capacity

GENERATOR

Generator Not Required

Foam System

Foam System Not Required

Foam Cell

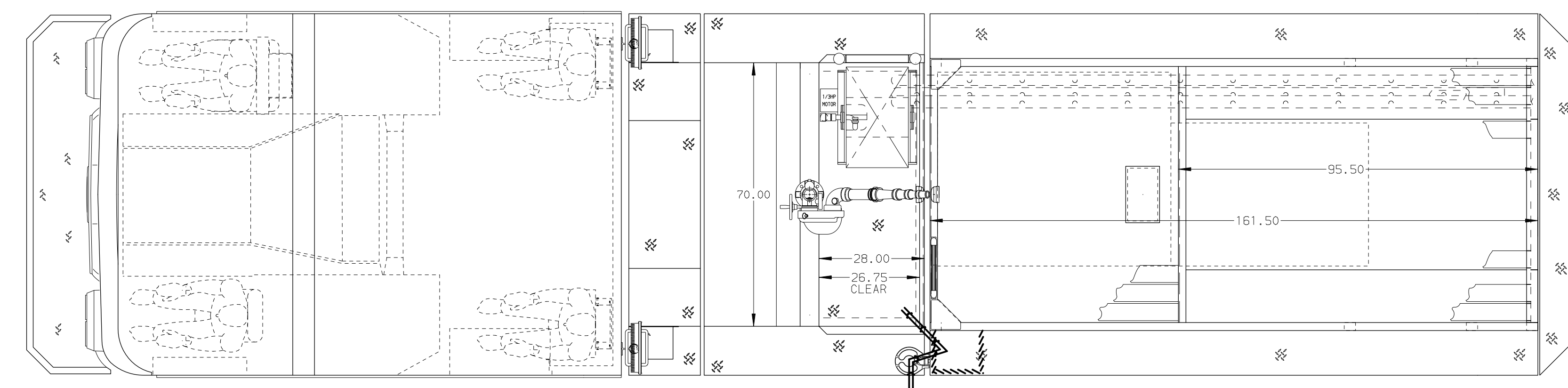
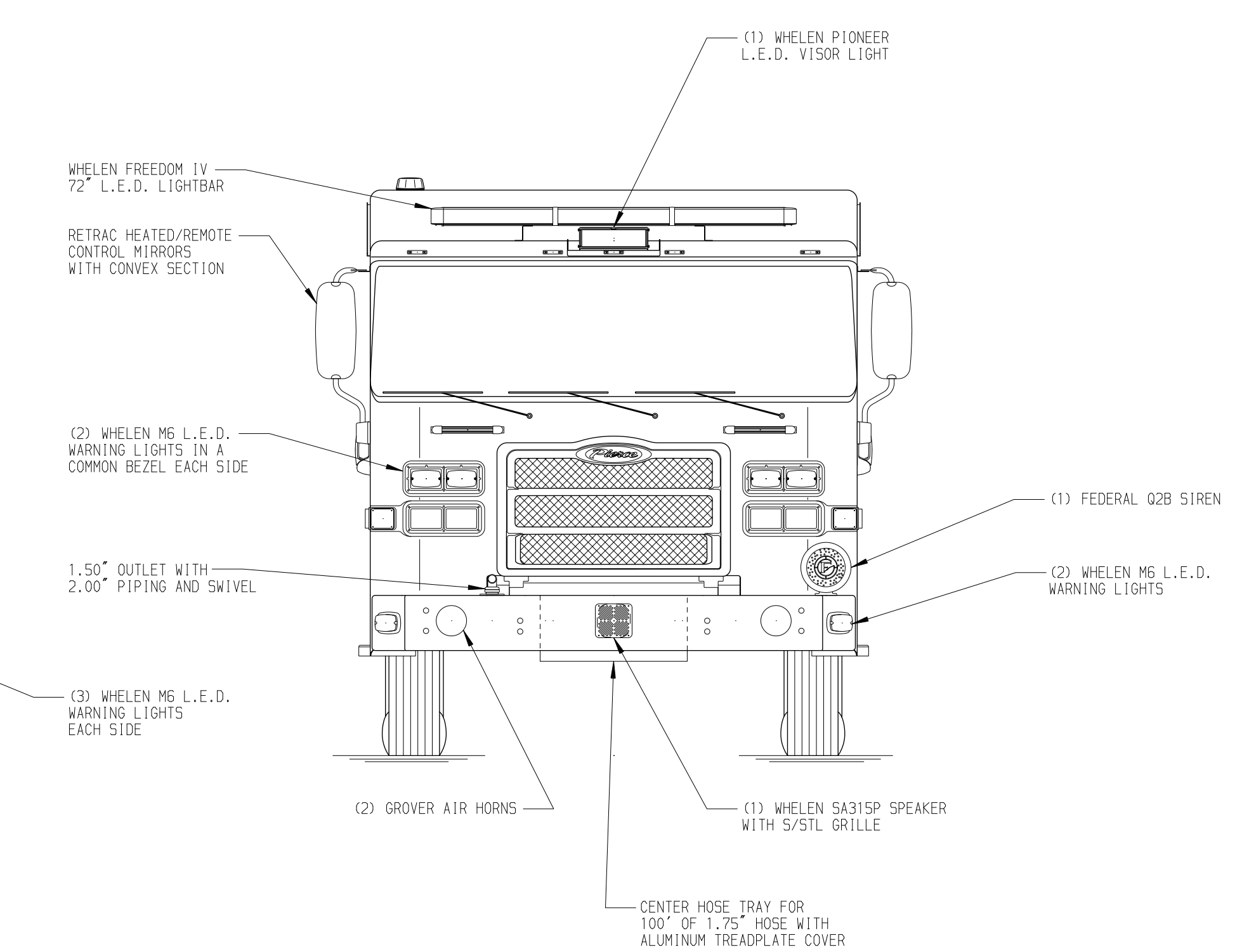
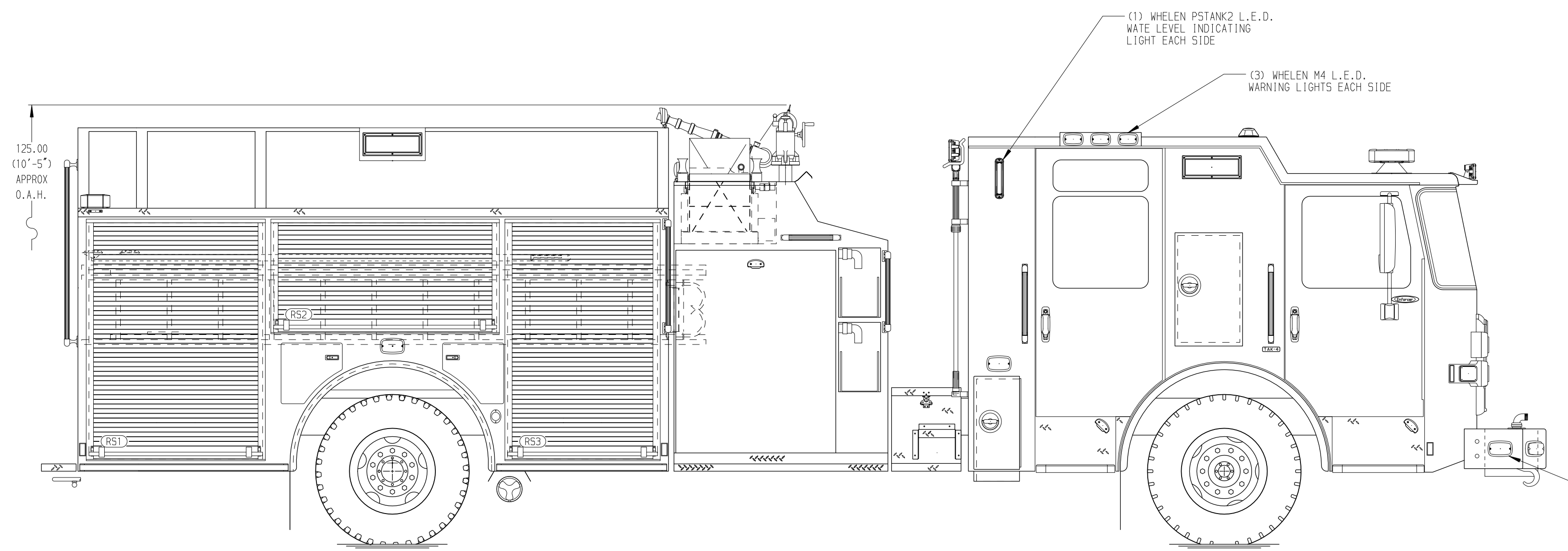
Foam Cell Not Required

Frontal Impact Protection

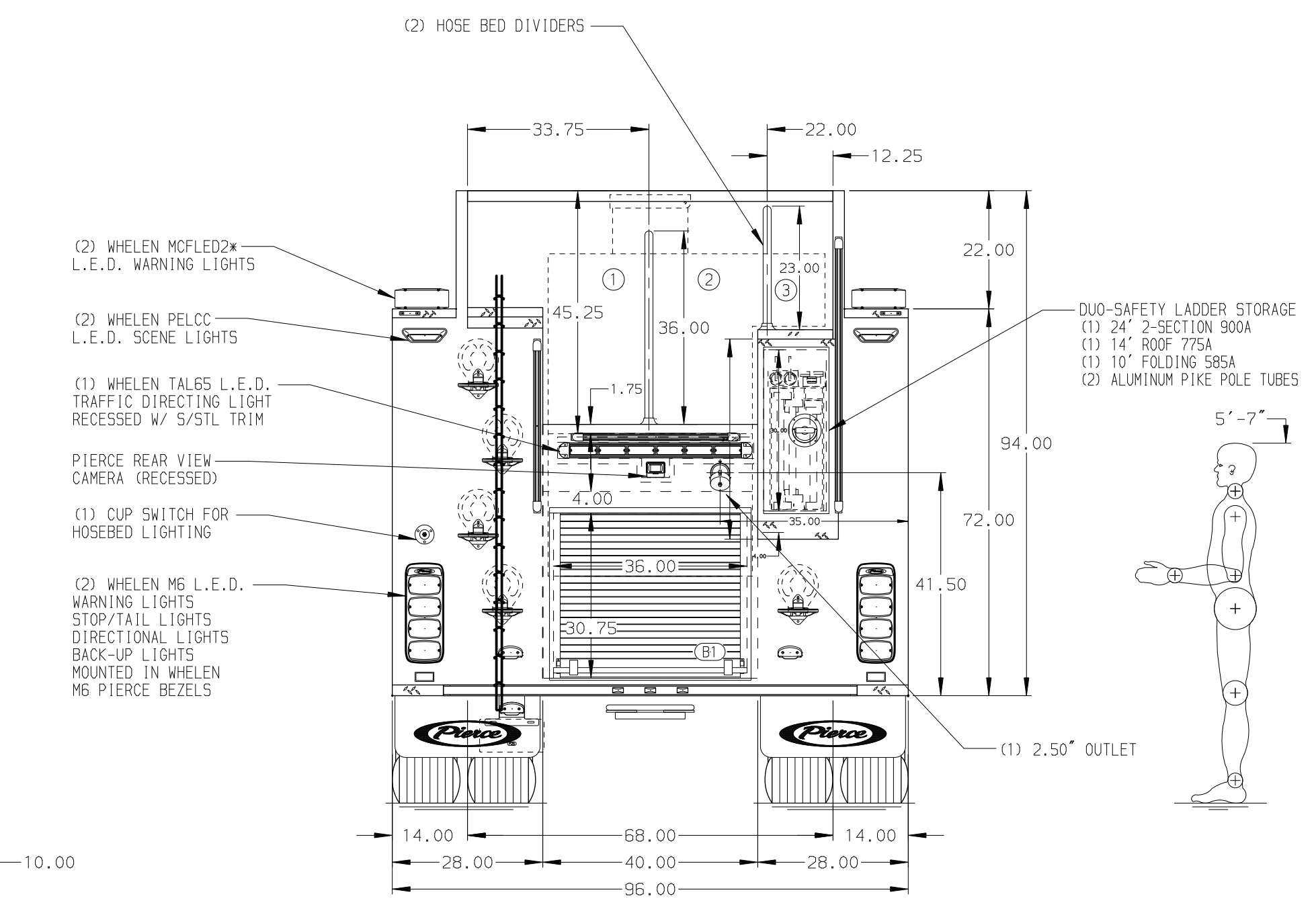
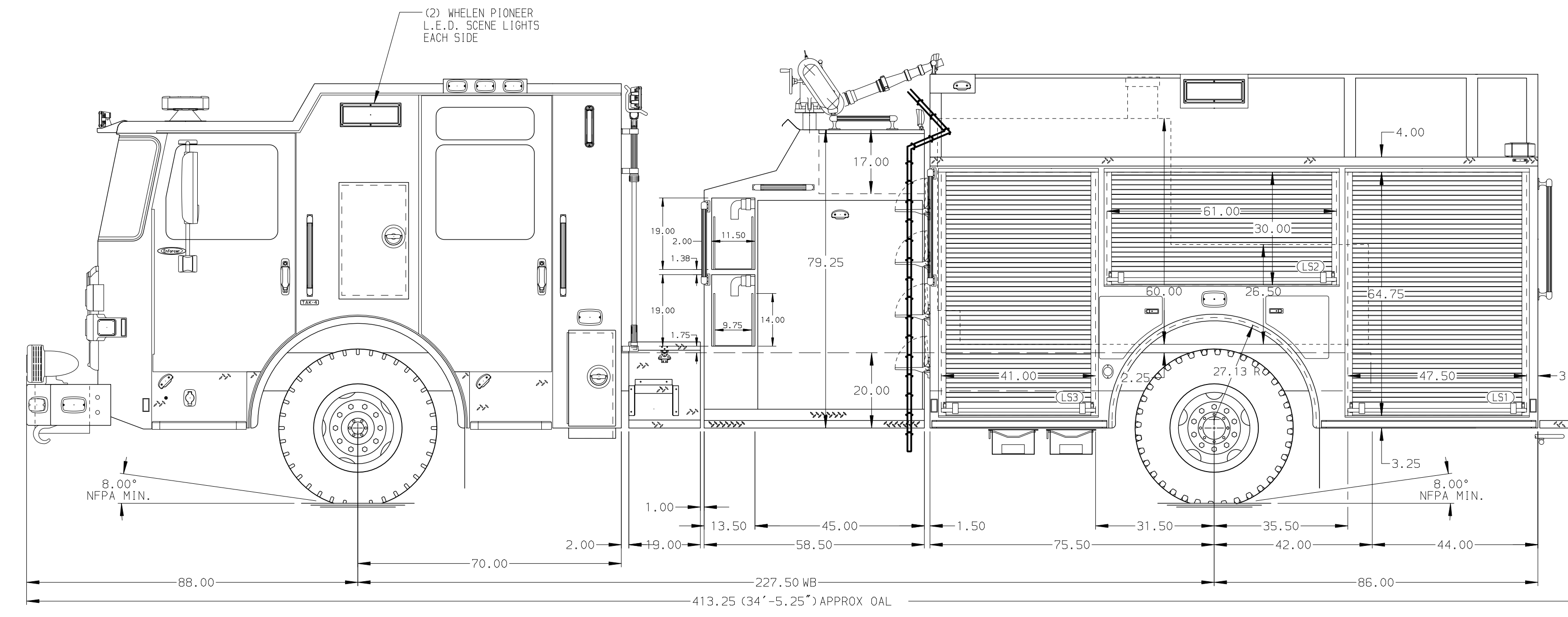
NOTE
 DIMENSIONS SHOWN ARE APPROXIMATE AND ARE SUBJECT TO MINOR DEVIATIONS AS MAY OCCUR OR BE NECESSARY IN CONSTRUCTION. MINOR DETAILS NOT SHOWN.

1. SHORELINE RECEPTACLE WITH KUSSMAUL SUPER AUTO-EJECT LOCATED IN DRIVER'S STEP AREA
2. AIR INLET WITH DISCONNECT COUPLING LOCATED IN DRIVER'S STEP AREA
3. BATTERY CHARGER LOCATED IN BEHIND DRIVER'S SEAT
4. BATTERY CHARGE INDICATOR LOCATED ON THE DRIVER SIDE SEAT RISER
5. TEN ADJUSTABLE SHELVES LOCATED PER SHOP ORDER
6. FOUR FLOOR MOUNTED SLIDE-OUT TRAYS LOCATED PER SHOP ORDER
7. ONE TILTING SLIDE-OUT TRAY LOCATED PER SHOP ORDER
8. CTECH TWO DRAWER ASSEMBLY LOCATED PER SHOP ORDER
9. ONE VERTICAL PEGBOARD PARTITION LOCATED PER SHOP ORDER

10. ALUMINUM PEGBOARD LOCATED PER SHOP ORDER
11. HANNAY BOOSTER REEL MODEL EF24-28-29 WITH CAPACITY FOR 150' OF 1.00" HOSE
12. TWO 120V 6-PLACE RECEPTACLES LOCATED PER SHOP ORDER



| HOSEBED CAPACITY | |
|------------------|---|
| BED 1 | 1000' OF 5.00" D.J. POLY HOSE |
| BED 2 | 800' OF 3.00" D.J. POLY HOSE |
| BED 2 | 300' OF 3.00" D.J. POLY HOSE AND 200' OF 1.75" D.J. POLY HOSE |



| REV | DATE | BY | CH | ENFORCER |
|---------|------|-----|----|----------|
| 17MAY21 | MMF | CW1 | | PIERCE |
| 07APR21 | COL | CW1 | | MODEL |

| | | | |
|---------|--------------------------------|------------|-----------|
| | | JOB NO. | 35999 |
| | | SCALE | DATE |
| TITLE | Pierce Pumper Approval Drawing | DRAWN BY | 08MAR21 |
| FOR | City of Garden City | CHECKED BY | 10MAR21 |
| DWG NO. | 35999AD | SHEET SIZE | SHEET NO. |
| | | D | 1 OF 1 |