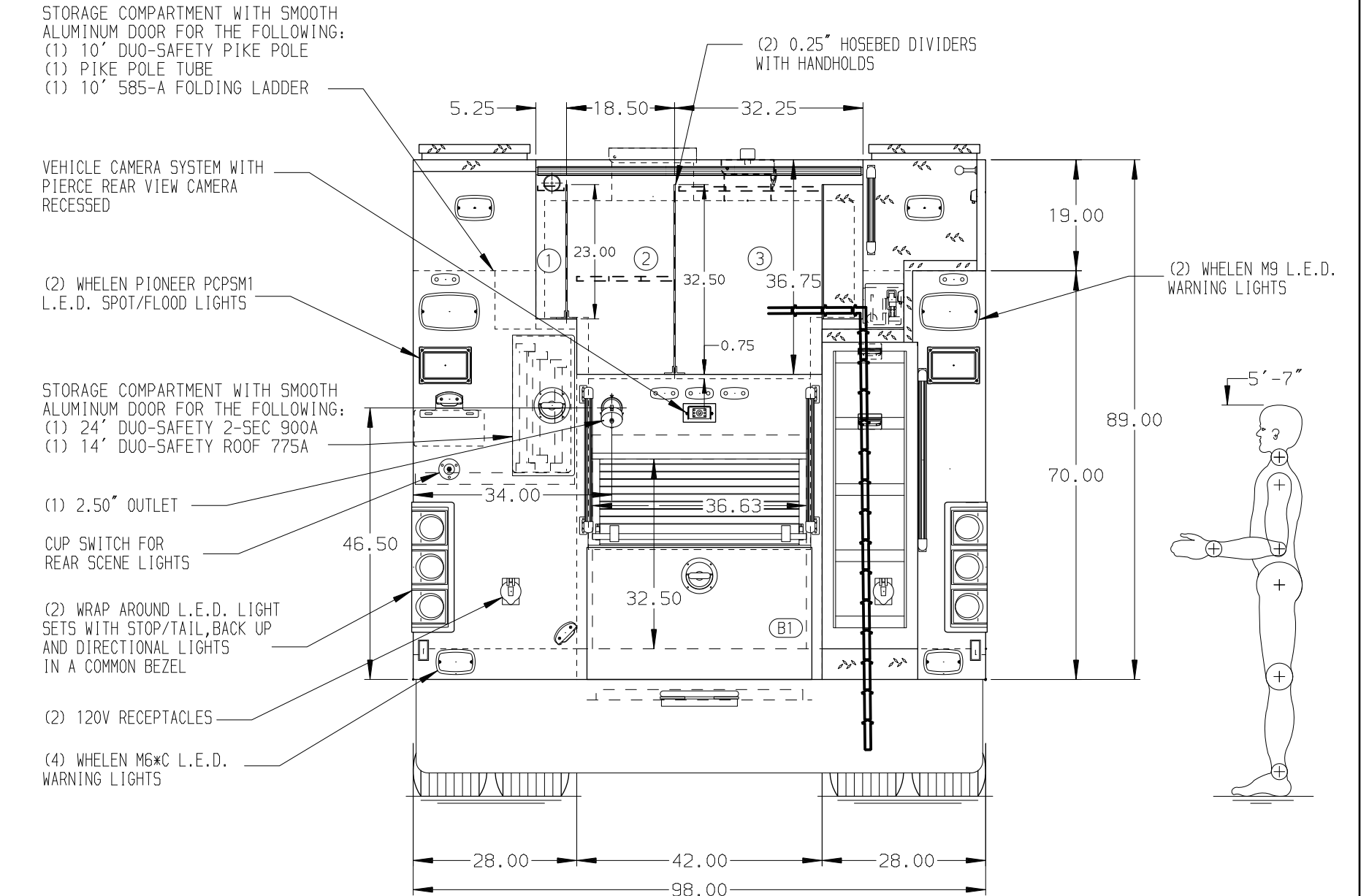
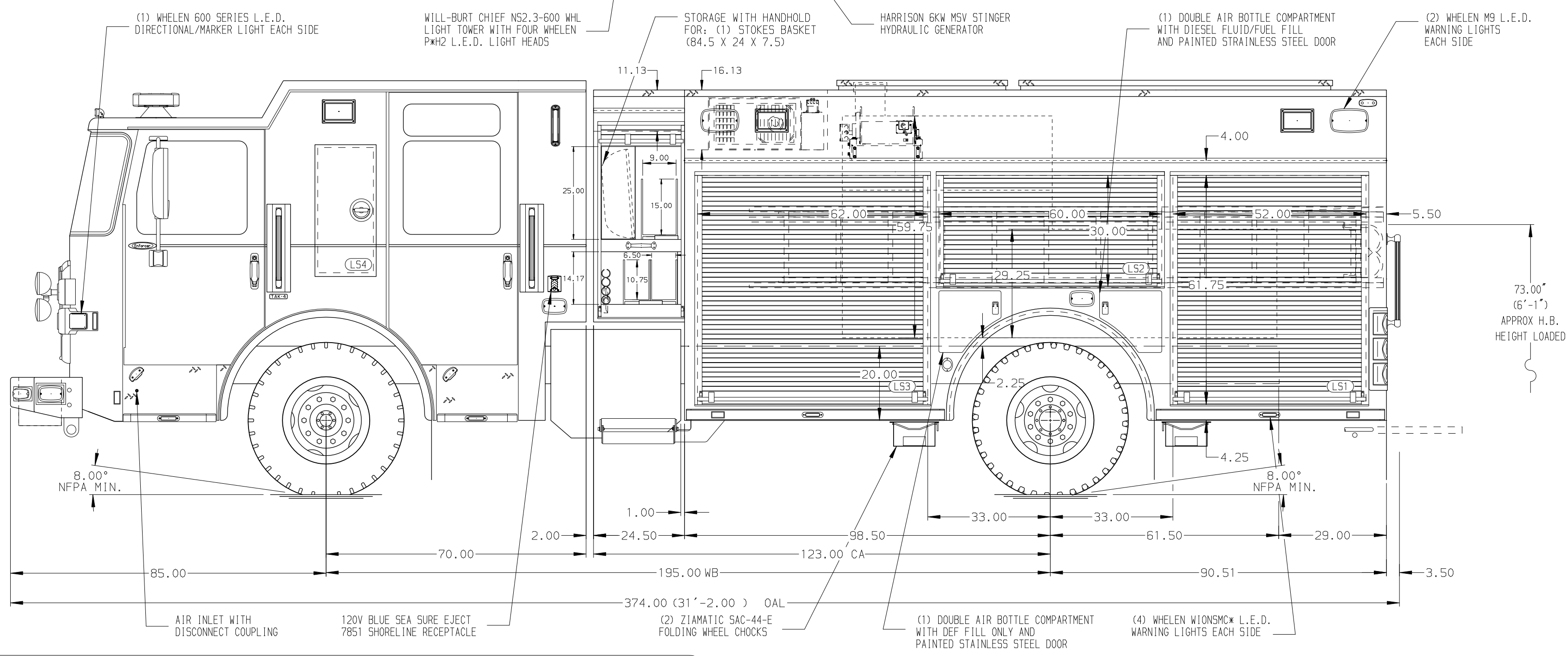


- HOSEBED CAPACITIES
- ① - 200' OF 2.50" D.J. POLY HOSE
 - ② - 800' OF 3.00" D.J. POLY HOSE
 - ③ - 1000' OF 5.00" D.J. POLY HOSE



MAXIMUM O.A.L. 378"

MAXIMUM O.A.H. 116"

ALUMINUM BODY

SIDE ROLL AND FRONTAL IMPACT PROTECTION

NOTE
 DIMENSIONS SHOWN ARE APPROXIMATE AND ARE SUBJECT TO MINOR DEVIATIONS AS MAY OCCUR OR BE NECESSARY IN CONSTRUCTION. MINOR DETAILS NOT SHOWN.

- 1. KUSSMAIL BATTERY CHARGER/AIR COMPRESSOR LOCATED PER SHOP ORDER
- 2. BATTERY CHARGER LOCATED BEHIND DRIVER'S SEAT
- 3. BATTERY CHARGER INDICATOR LOCATED ON DRIVER'S SEAT RISER
- 4. DUAL L.E.D. LIGHT STRIPS LOCATED ON THE FRONT OF THE HOSEBED
- 5. Z100 SCBA HOLDER BRACKET IN DRIVERS SIDE EMS CABINET
- 6. (1) WHELEN SA315P SPEAKER LOCATED BEHIND FRONT BUMPER ON DRIVERS SIDE

REV	DATE	BY	CH	ENFORCER
1	10NOV21	JJB	CSH	CHASSIS DATA
2	01SEP21	JJB	CSH	MAKE
3	07JUL21	JJB	CDU	PIERCE
4	21MAY21	JJB	CDU	MODEL
5	26FEB21	CDU	PHA	

		JOB NO.	35992
		SCALE	DATE
TITLE	1500-D-750P, 730G WATER W/20G FOAM, 189" RESCUE PUC LS LADDER STORAGE, MORTON CASS SWING DOWN STP	DRAWN BY	JJB
FOR	NORTON FIRE DEPARTMENT NORTON, VIRGINIA	CHECKED BY	CDU
DWG NO.	35992AD-SH1	SHEET SIZE	SHEET NO.
		D	1 OF 2