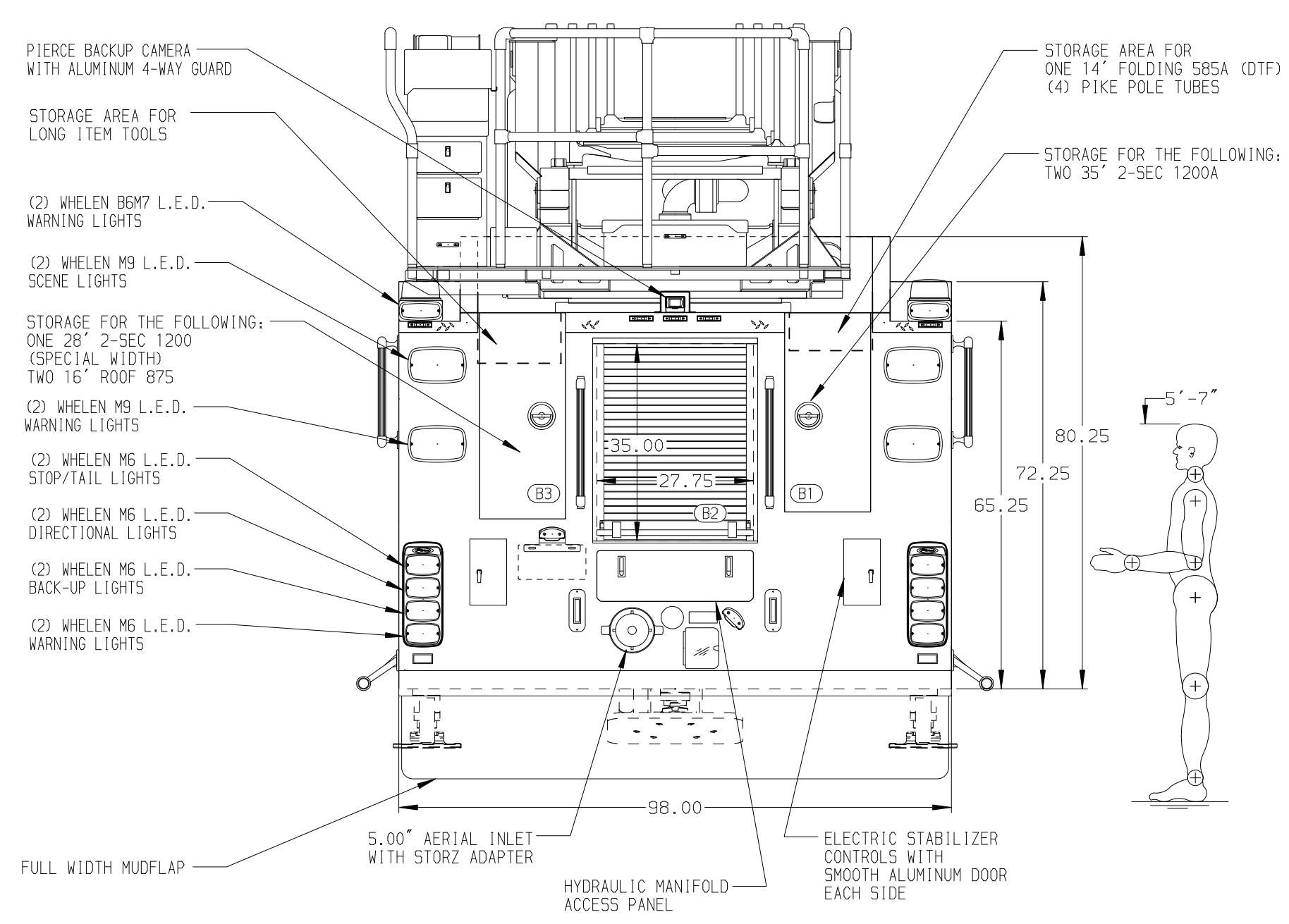
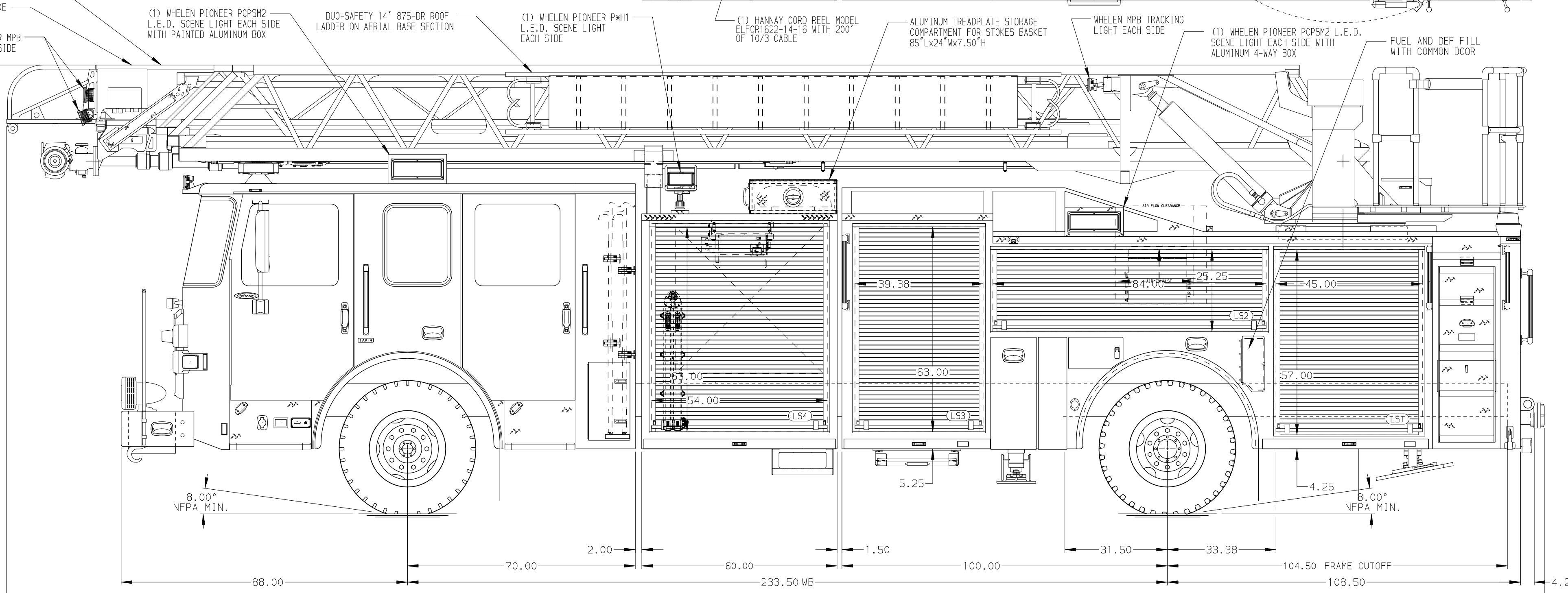


<b>BODY</b> 107' ASL Aluminum Body <b>COMPT, LEFT SIDE FRONT</b> Full Height RollUp Forward <b>COMPT, LEFT SIDE REAR</b> Full Height RollUp Rearward <b>COMPT, RIGHT SIDE FRONT</b> Full Height RollUp Forward <b>COMPT, RIGHT SIDE REAR</b> Full Height RollUp Rearward	<b>WATER TANK</b> Water Tank Not Required <b>Foam System</b> Foam System Not Required <b>Foam Cell</b> Foam Cell Not Required
---	--



<b>CHASSIS</b> Enforcer Chassis	<b>CAB</b> 7000 Enforcer Cab	<b>AXLE, FRONT, CUSTOM</b> 22,800 Lb TAK-4 Axle	<b>TRANSMISSION</b> Allison 5th Gen, 4000 EV5 P	<b>PUMPHOUSE</b> 60" Compartment, No Pump	<b>CROSSLAYS, 1.50"</b> 1.50" CrossLays Not Required	<b>SPEEDLAYS</b> SpeedLays Not Required	<b>SAFETY</b> Side Roll and Frontal Impact Protection
<b>ENGINE</b> 525 HP DD13 Engine	<b>BUMPER</b> 19" Extended Painted Steel	<b>AXLE, REAR</b> 33,500 Lb Meritor Axle		<b>PUMP</b> Pump Not Required	<b>CROSSLAYS, 2.50"</b> 2.50" CrossLays Not Required	<b>GENERATOR</b> Harrison 8kW MAS-D Hydraulic	

- NOTE**  
DIMENSIONS SHOWN ARE APPROXIMATE AND ARE SUBJECT TO MINOR DEVIATIONS AS MAY OCCUR OR BE NECESSARY IN CONSTRUCTION. MINOR DETAILS NOT SHOWN.
- WHEEL CHOCKS SHIPPED LOOSE
  - SHORELINE RECEPTACLE WITH KUSSMALL SUPER AUTO-EJECT LOCATED ON DRIVER SIDE STEP WELL
  - AIR INLET WITH DISCONNECT COUPLING AND SHUT-OFF VALVE IN THE DRIVER SIDE STEP WELL
  - BATTERY CHARGER LOCATED IN CAB PER SHOP ORDER
  - BATTERY CHARGE INDICATOR LOCATED ON THE DRIVER SIDE STEP WELL
  - ALUMINUM TREADPLATE ON CAB ROOF
  - FIVE FLOOR MOUNTED SLIDE-OUT TRAYS IN COMPARTMENT PER SHOP ORDER
  - NON-RAISED AERIAL PEDESTAL
  - LIFTING EYE ROPE RESCUE ATTACHMENT AT AERIAL TIP
  - 1500 GPM HIGH FLOW WATERWAY
  - NINE ADJ FULL WIDTH/DEPTH SHELVES IN COMPARTMENTS PER SHOP ORDER
  - THREE FLOOR MOUNTED SLIDE-OUT TRAYS IN COMPARTMENTS PER SHOP ORDER
  - THREE ADJUSTABLE TOOL BOARDS MOUNTED TO SLIDE-OUT TRAY IN COMPARTMENTS PER SHOP ORDER
  - ONE SWING-OUT SPLIT TOOLBOARD IN COMPARTMENT PER SHOP ORDER
  - ONE VERTICAL PARTITION IN COMPARTMENT PER SHOP ORDER
  - ONE PEGBOARD ON BACK WALL OF COMPARTMENT PER SHOP ORDER
  - ONE TILT-OUT BACK FOR (4) AIR BAGS IN COMPARTMENT PER SHOP ORDER
  - ONE FLOOR EXTENSION IN COMPARTMENT PER SHOP ORDER
  - ONE LITTLE GIANT VELOCITY MODEL 13 LADDER IN COMPARTMENT PER SHOP ORDER
  - CIRCUIT BREAKER PANEL IN COMPARTMENT PER SHOP ORDER
  - TWO 120V RECEPTACLES LOCATED PER SHOP ORDER
  - RUNG LIGHTING ON AERIAL LADDER
  - DC POWER TO AERIAL TIP
  - 2-WAY INTERCOM SYSTEM BETWEEN AERIAL TIP AND TURNABLE

**Pierce MANUFACTURING INC.**

JOB NO. 35964

SCALE 1:24 DATE

DRAWN BY LWE DATE 02DEC20

CHECKED BY NDA DATE 04DEC20

SHEET SIZE D SHEET NO. 1 OF 1

**Pierce**

CHASSIS DATA

TITLE 107' ASCENDANT HSL AERIAL LADDER AND BODY ASSEMBLY NO PUMP/NO TANK

FOR BRIDGEPORT FIRE DEPARTMENT BRIDGEPORT, CT

DWG NO. 35964AD

REV	DATE	BY	CH	ENFORCER
11JUN21	TKA	CSH		
23APR21	TKA	CSH		