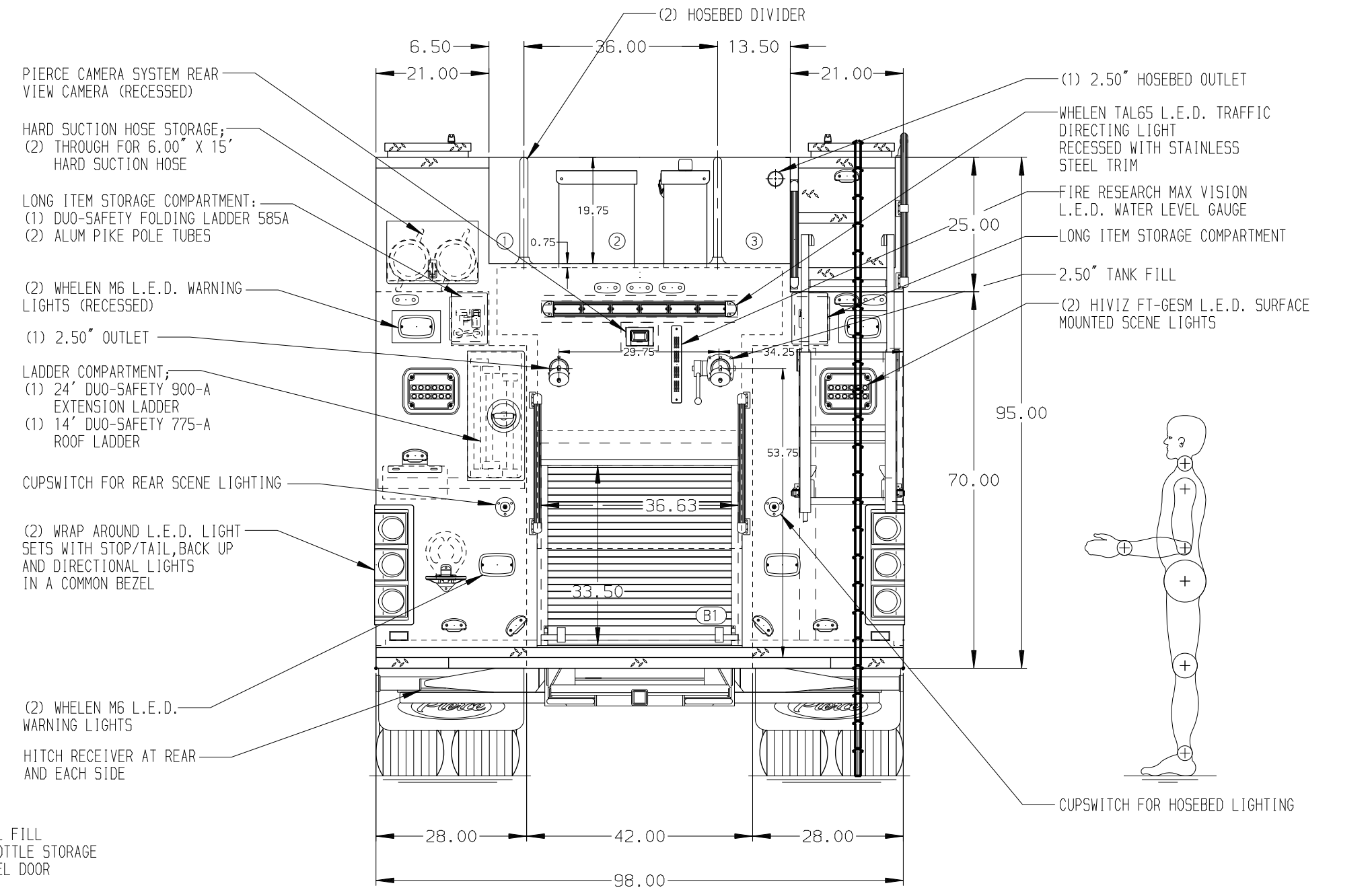
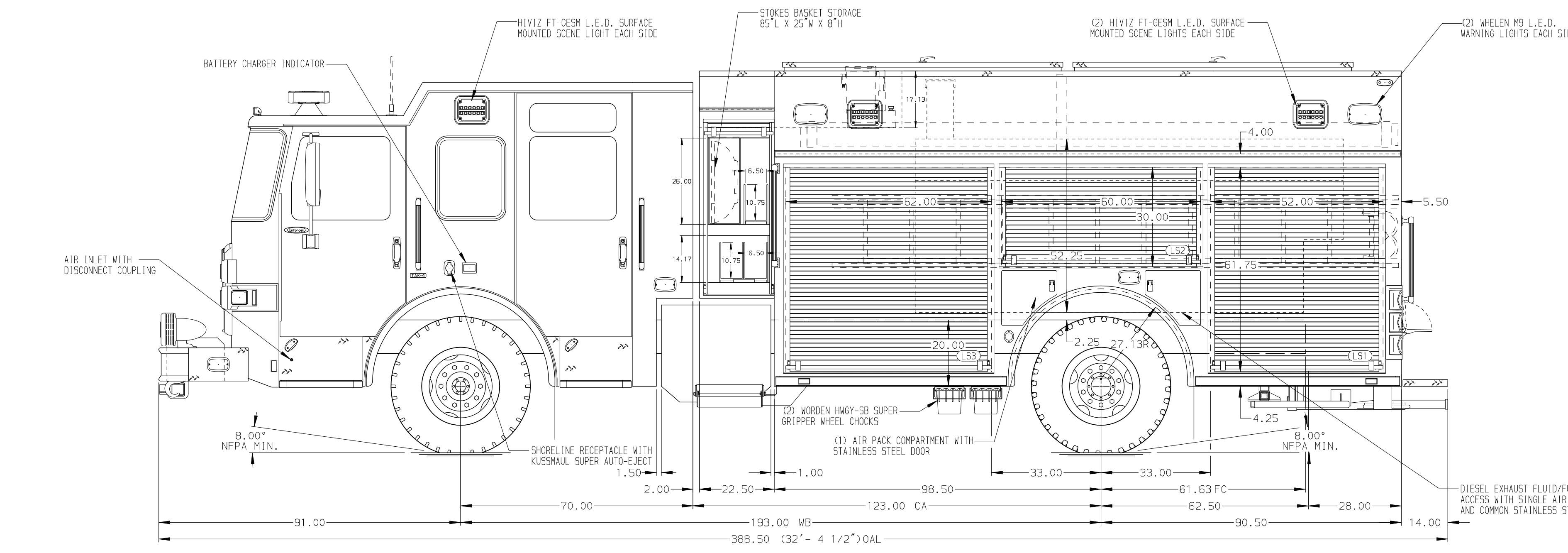


- HOSEBED CAPACITIES
- ① 200' OF 2.50" D.J.POLY HOSE
 - ② 1500' OF 5.00" MERCEDES MEGAFLOW HOSE
 - ③ 300' OF 3.00" D.J.POLY HOSE



ALUMINUM BODY

NOTE
DIMENSIONS SHOWN ARE APPROXIMATE AND ARE SUBJECT TO MINOR DEVIATIONS AS MAY OCCUR OR BE NECESSARY IN CONSTRUCTION. MINOR DETAILS NOT SHOWN.

1. ONSPOT AUTOMATIC TIRE CHAINS TO BE PROVIDED AT REAR
2. 3,000# W/ARN PORTABLE WINCH WITH 100' OF NYLON REINFORCED SYNTHETIC ROPE
3. BATTERY CHARGER LOCATED BEHIND DRIVER'S SEAT
4. DUAL L.E.D. LIGHT STRIPS LOCATED IN HOSE BED
5. STAINLESS STEEL SCUFFPLATE ON BODY REAR CORNERS
6. ONE FULL WIDTH/DEPTH ADJUSTABLE SHELF IN COMPARTMENT(S) L51, L53, R51, R53, B1
7. ONE ADJUSTABLE TILTING SLIDE-OUT TRAY IN COMPARTMENT R51, R52, R53
8. CABLE RELEASE LATCH WITH SINGLE HAND OPERATION FOR TRAY IN COMPARTMENT R52
9. ONE FLOOR MOUNTED SLIDE-OUT TRAY WITH 2.00" SIDES IN COMPARTMENT B1
10. SLIDE-OUT TOOLBOARD WITH PEGBOARD PATTERN AND PAINTED FINISH IN COMPARTMENT(S) R51 & R53
11. ONE SWING-OUT ALUMINUM TOOL BOARD IN COMPARTMENT L52
12. PARTITION BETWEEN COMPARTMENTS L51/R51 AND R51/R51
13. ONE VERTICAL PARTITION IN COMPARTMENT(S) R51 & R53
14. ALUMINUM PEGBOARD ON BACK WALL COMPARTMENT L52
15. ALUMINUM PEGBOARD ON BACK WALL OF COMPARTMENT(S) L51 & L53

REV	DATE	BY	CH	ENFORCER
07MAY21	JRC	DTS		CHASSIS DATA
02APR21	BST	DTS		MAKE
01APR21	BST	DTS		PIERCE
21JAN21	CDU	PHA		MODEL

		JOB NO.	35920
		SCALE	DATE
TITLE	1500-D-1000 WATER/20 FOAM, 189" BODY, SIDE CONTROL CROSSLAYS, LADDER STORAGE COMPARTMENT, FOAM SYSTEM		
FOR	WAYNE TOWNSHIP VOLUNTEER FIRE COMPANY MCELHATTAN, PENNSYLVANIA		
DWG NO.	35920AD		
CHECKED BY	CDU	DRAWN BY	JRC
SHEET SIZE	D	SHEET NO.	1 OF 1