

**PUMPER
BODY**

Long Aluminum 2nd Gen Pumper

CHASSIS

Enforcer Chassis

**CHASSIS
AXLE, FRONT, CUSTOM**

19,500 Lb TAK-4 Axle

AXLE, REAR

27,000 Lb Dana Axle

ENGINE

450 HP Cummins L9 Engine

TRANSMISSION

Allison 5th Gen, 3000 EVS P

BUMPER

19" Extended Stainless Steel

CAB

7010 Enforcer Cab

**BODY
WATER TANK**

1000 Gallon Poly Water Tank

COMPT, PUMPER, REAR

44.50" FF RollUp Rear Compt

COMPT, PUMPER, LEFT SIDE

161" RollUp Full Height & Depth Front & Rear

COMPT, PUMPER, RIGHT SIDE

161" RollUp Low FDLER

**FIRE SUPPRESSION
PUMPHOUSE**

45" Control Zone Side Mount

PUMP

1500 GPM Waterous CSU

CROSSLAYS, 1.50"

(2) 1.50", 250' of 1.75" Hose

CROSSLAYS, 2.50"

2.50" Crosslay Not Required

SPEEDLAYS

Speedlays Not Required

GENERATOR

Generator Not Required

Foam System

Foam System Not Required

Foam Cell

Foam Cell Not Required

Side Roll and Frontal Impact Protection

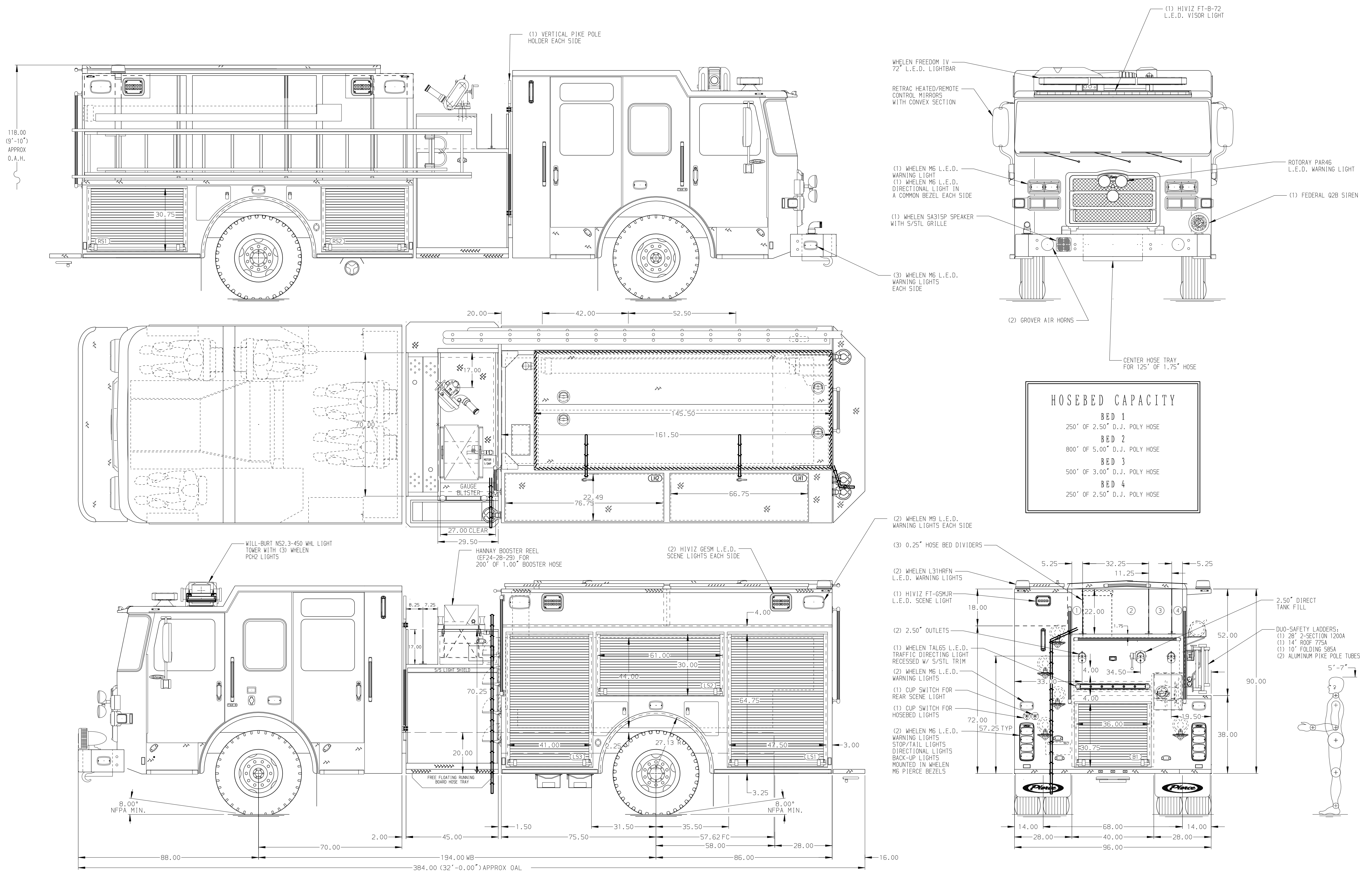
NOTE

DIMENSIONS SHOWN ARE APPROXIMATE AND ARE SUBJECT TO MINOR DEVIATIONS AS MAY OCCUR OR BE NECESSARY IN CONSTRUCTION. MINOR DETAILS NOT SHOWN.

- ONE 2.50 OUTLET WITH 2.50 PIPING ON TOP BUMPER RIGHT SIDE
- SHORELINE RECEPTACLE WITH KUSSMAUL SUPER AUTO-EJECT LOCATED ON DRIVER'S SIDE OF THE CAB
- AIR INLET WITH DISCONNECT COUPLING IN THE DRIVER SIDE STEPMELL
- BATTERY CHARGER LOCATED IN CAB PER SHOP ORDER
- BATTERY CHARGE INDICATOR LOCATED ON THE DRIVER SIDE OF CAB
- FOUR ADJUSTABLE SHELVES LOCATED PER SHOP ORDER
- ONE FLOOR MOUNTED SLIDE-OUT TRAY LOCATED PER SHOP ORDER
- INSTA-CHAIN AUTOMATIC TIRE CHAINS
- ONE SLIDE-OUT TRAY WITH 4" SIDES LOCATED IN COMPARTMENT PER SHOP ORDER
- ONE TILT/SLIDE-OUT TRAY LOCATED IN COMPARTMENT PER SHOP ORDER

- ONE TOOLBOARD ADDED TO SLIDE OUT TRAY IN COMPARTMENT PER SHOP ORDER
- ONE VERTICAL DIVIDER LOCATED IN COMPARTMENT PER SHOP ORDER
- AIR KUSSMAUL COMPRESSOR LOCATED IN CAB PER SHOP ORDER

MAXIMUM O.A.H. - 118.00"



HOSEBED CAPACITY	
BED 1	250' OF 2.50" D.J. POLY HOSE
BED 2	800' OF 5.00" D.J. POLY HOSE
BED 3	500' OF 3.00" D.J. POLY HOSE
BED 4	250' OF 2.50" D.J. POLY HOSE

		JOB NO.	35918
		SCALE	DATE
TITLE	Pierce Pumper Approval Drawing	DRAWN BY	MMF
FOR	Efland Vol Fire Department	CHECKED BY	COL
DWG NO.	35918AD	SHEET SIZE	SHEET NO.
		D	1 OF 1

REV	DATE	BY	CH	ENFORCER
1	19MAY21	MMF	DTS	MAKE
2	30APR21	MMF	GKH	PIERCE
3	05MAR21	MMF	DTS	MODEL