

**PUMPER  
BODY**

Medium Aluminum 2nd Gen Pumper

**CHASSIS**

Sober FR Chassis

**CHASSIS  
AXLE, FRONT, CUSTOM**

20,000 Lb Dana Axle

**AXLE, REAR**

27,000 Lb Dana Axle

**ENGINE**

380 HP Cummins L9 Engine

**TRANSMISSION**

Allison 5th Gen, 3000 EVS P

**BUMPER**

19" Extended Stainless Steel

**CAB**

7010 Sober FR Cab

**BODY**

**WATER TANK**

1000 Gallon Poly Water Tank

**COMPT, PUMPER, REAR**

51.25" FF RollUp Rear Compt

**COMPT, PUMPER, LEFT SIDE**

152" RollUp Full Height Front & Rear FDLR

**COMPT, PUMPER, RIGHT SIDE**

152" RollUp Full Height Front & Rear FDLR

**FIRE SUPPRESSION  
PUMPHOUSE**

48" Control Zone Side Mount

**PUMP**

1500 GPM Waterous CSU

**CROSSLAYS, 1.50"**

(2) 1.50" Standard Capacity

**CROSSLAYS, 2.50"**

(1) 2.50" Standard Capacity

**SPEEDLAYS**

SpeedLays Not Required

**GENERATOR**

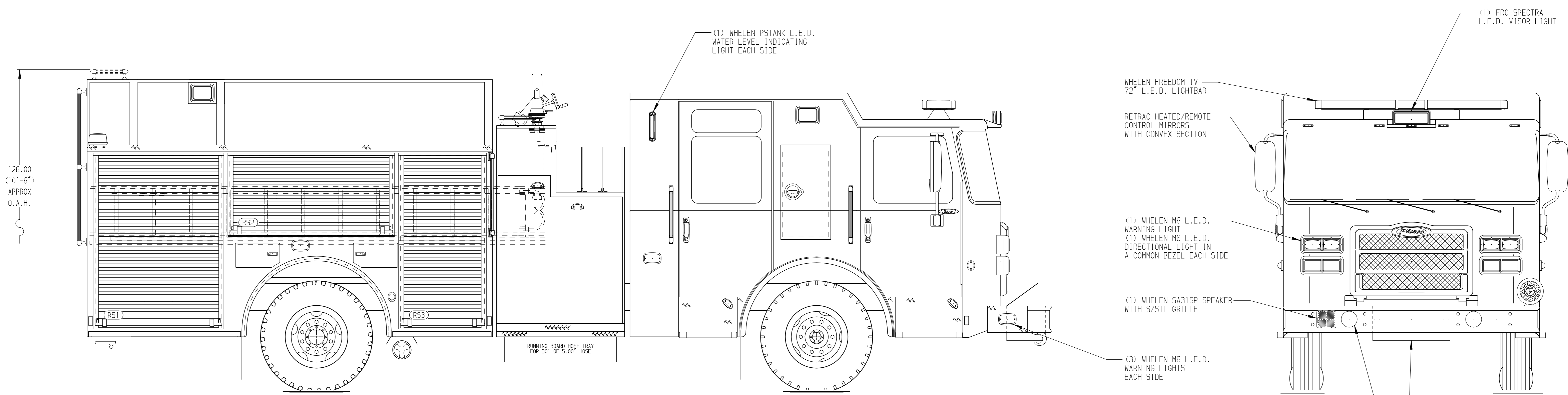
Generator Not Required

**Foam System**

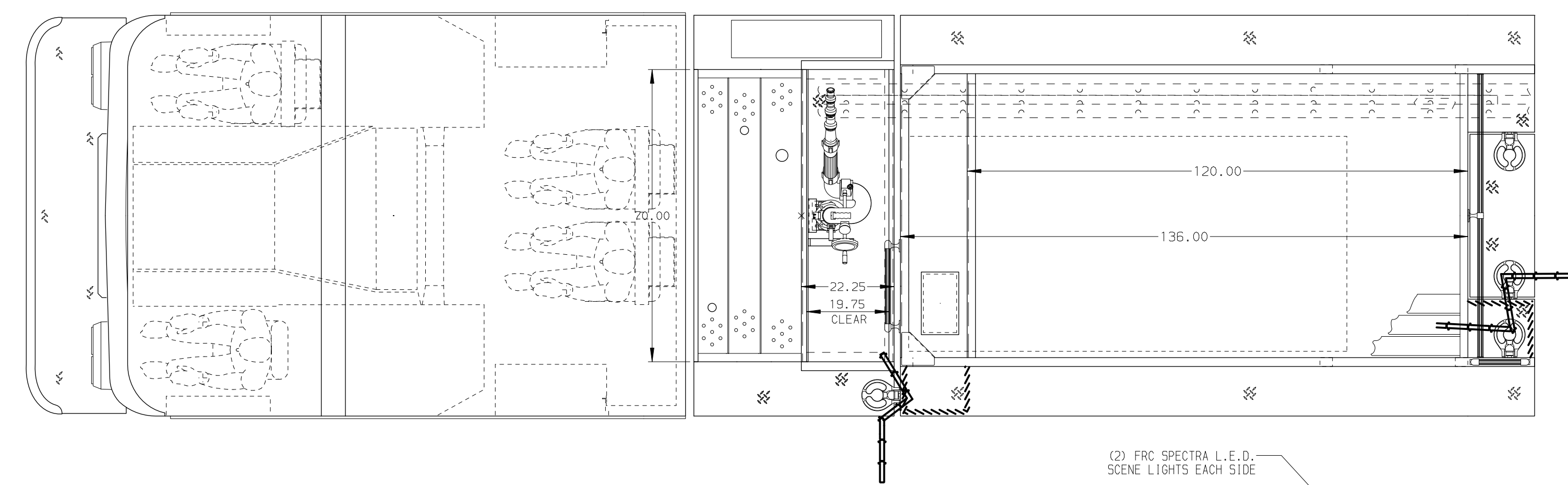
Foam System Not Required

**Foam Cell**

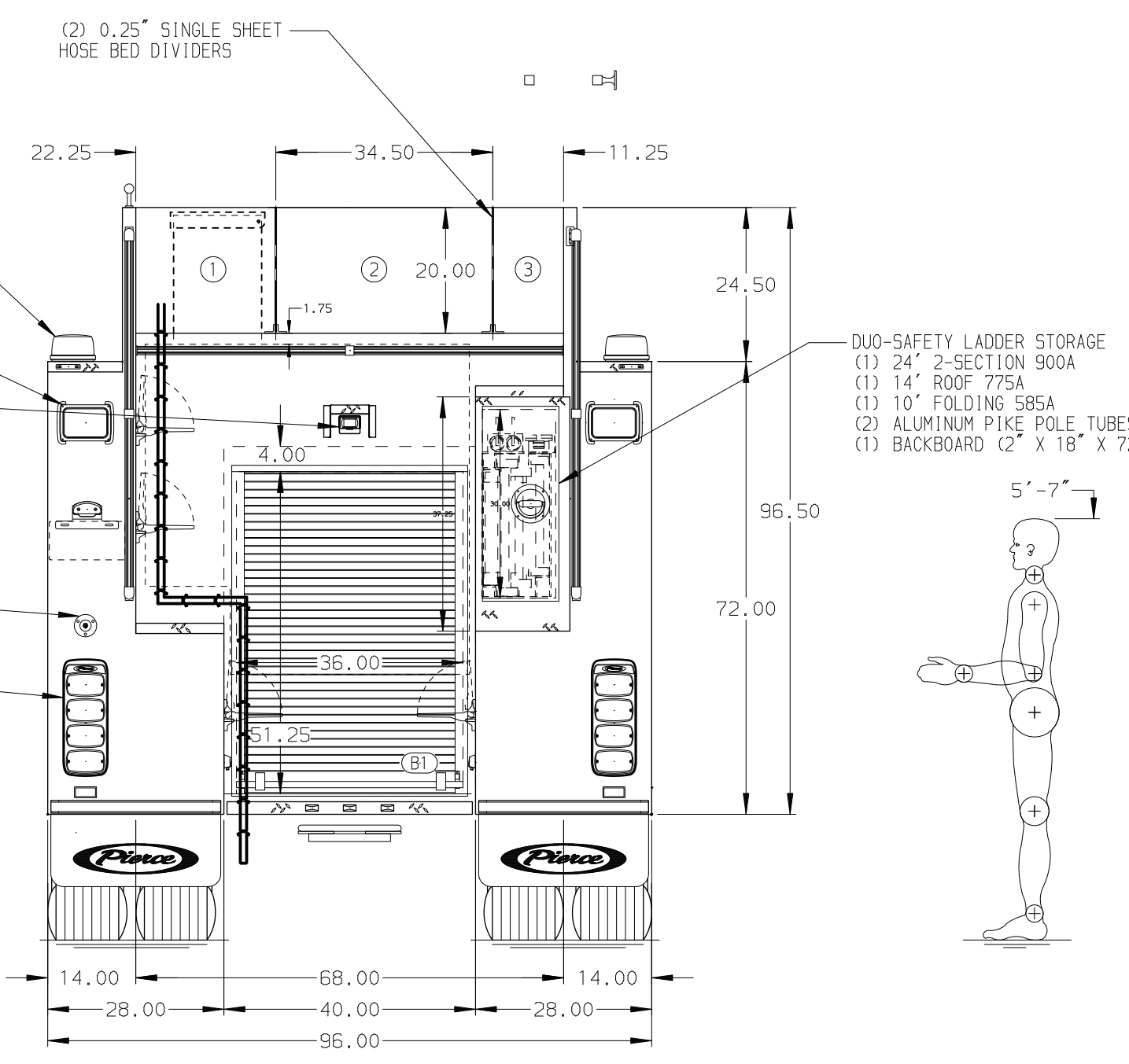
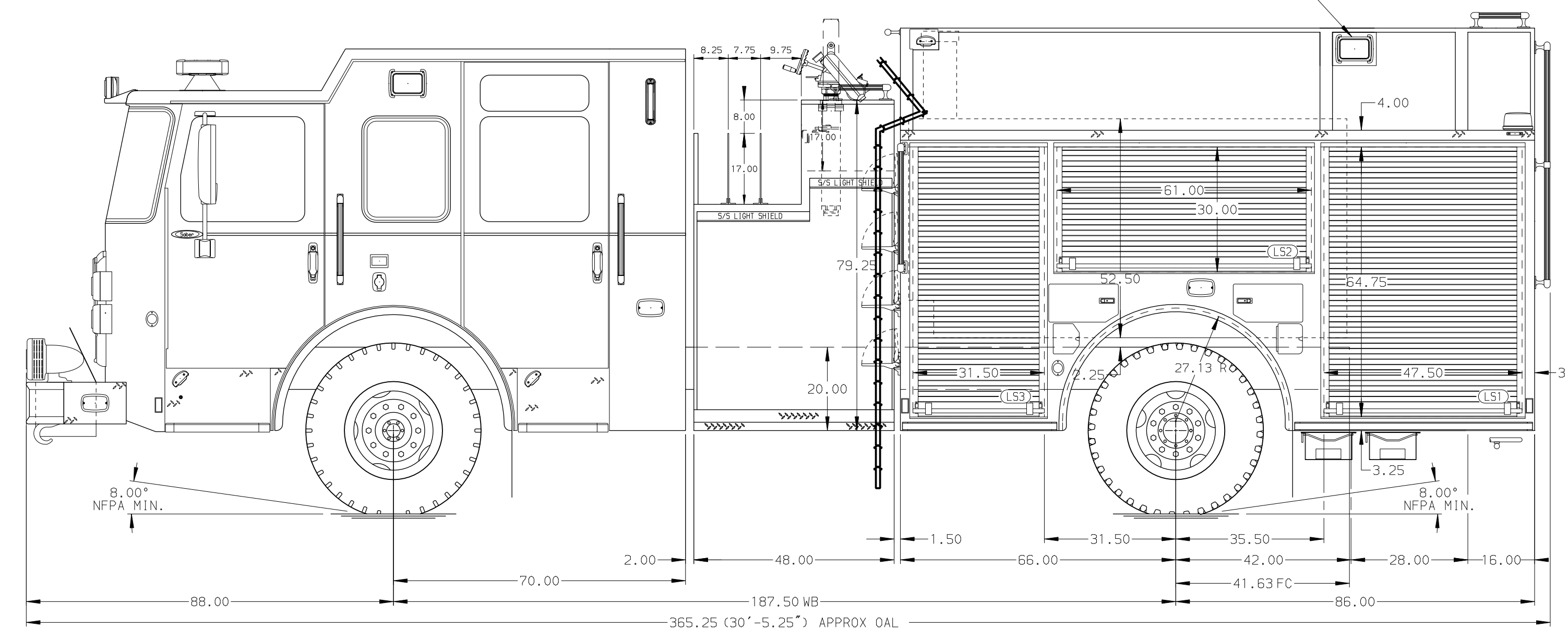
Foam Cell Not Required



(1) FEDERAL Q2B SIREN



HOSEBED CAPACITY	
<b>BED 1</b>	800' OF 3.00" D.J. POLY HOSE
<b>BED 2</b>	1000' OF 5.00" D.J. POLY HOSE
<b>BED 3</b>	200' OF 3.00" D.J. POLY HOSE



**NOTE**  
DIMENSIONS SHOWN ARE APPROXIMATE AND ARE SUBJECT TO MINOR DEVIATIONS AS MAY OCCUR OR BE NECESSARY IN CONSTRUCTION. MINOR DETAILS NOT SHOWN.

						JOB NO.	35917 01-03
						SCALE	DATE
						DRAWN BY	02NOV20
						CHECKED BY	3NOV20
						SHEET SIZE	SHEET NO.
						DWG NO.	1 OF 1
REV	DATE	BY	CH	CHASSIS DATA	TITLE	35917AD	
24FEB21		RHU	NAS	PIERCE	FOR	Jackson Fire Department	
				MODEL			
				SABER FR			