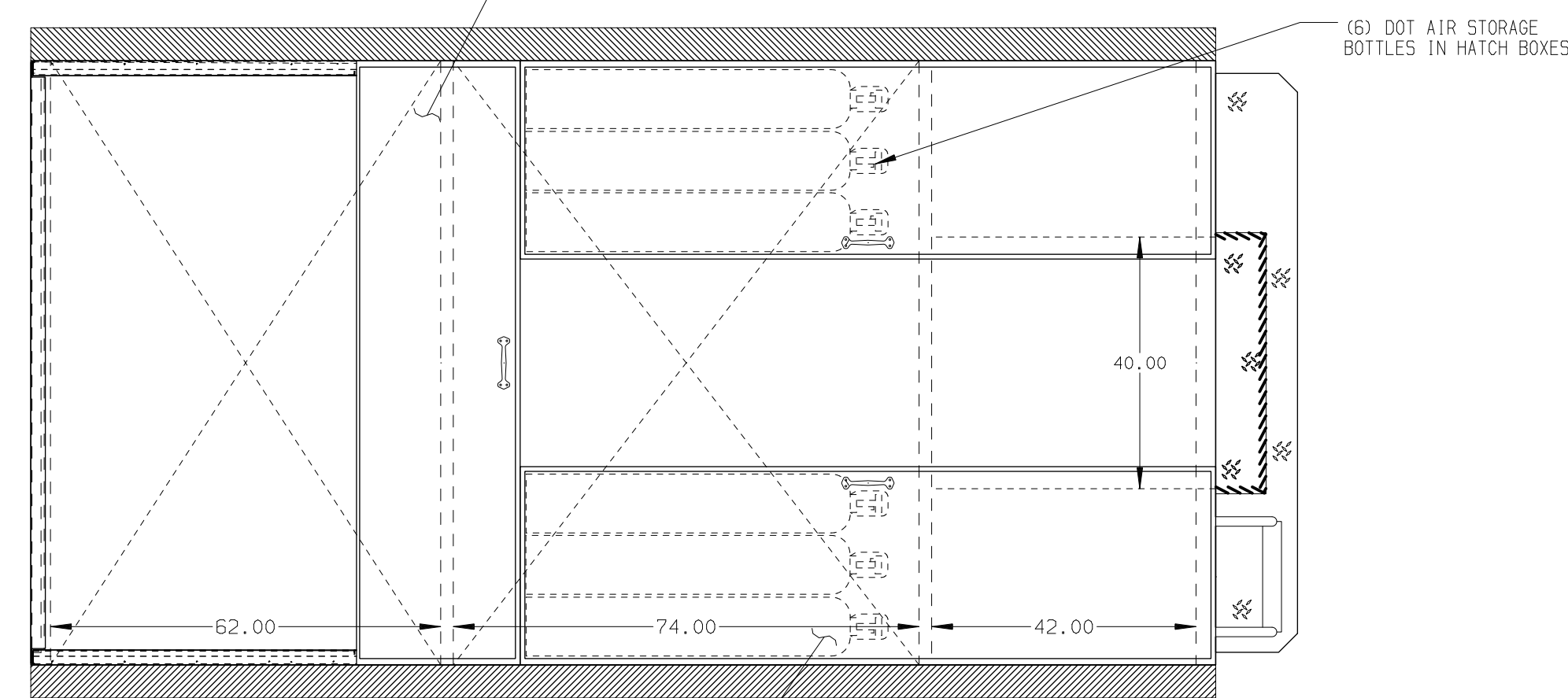
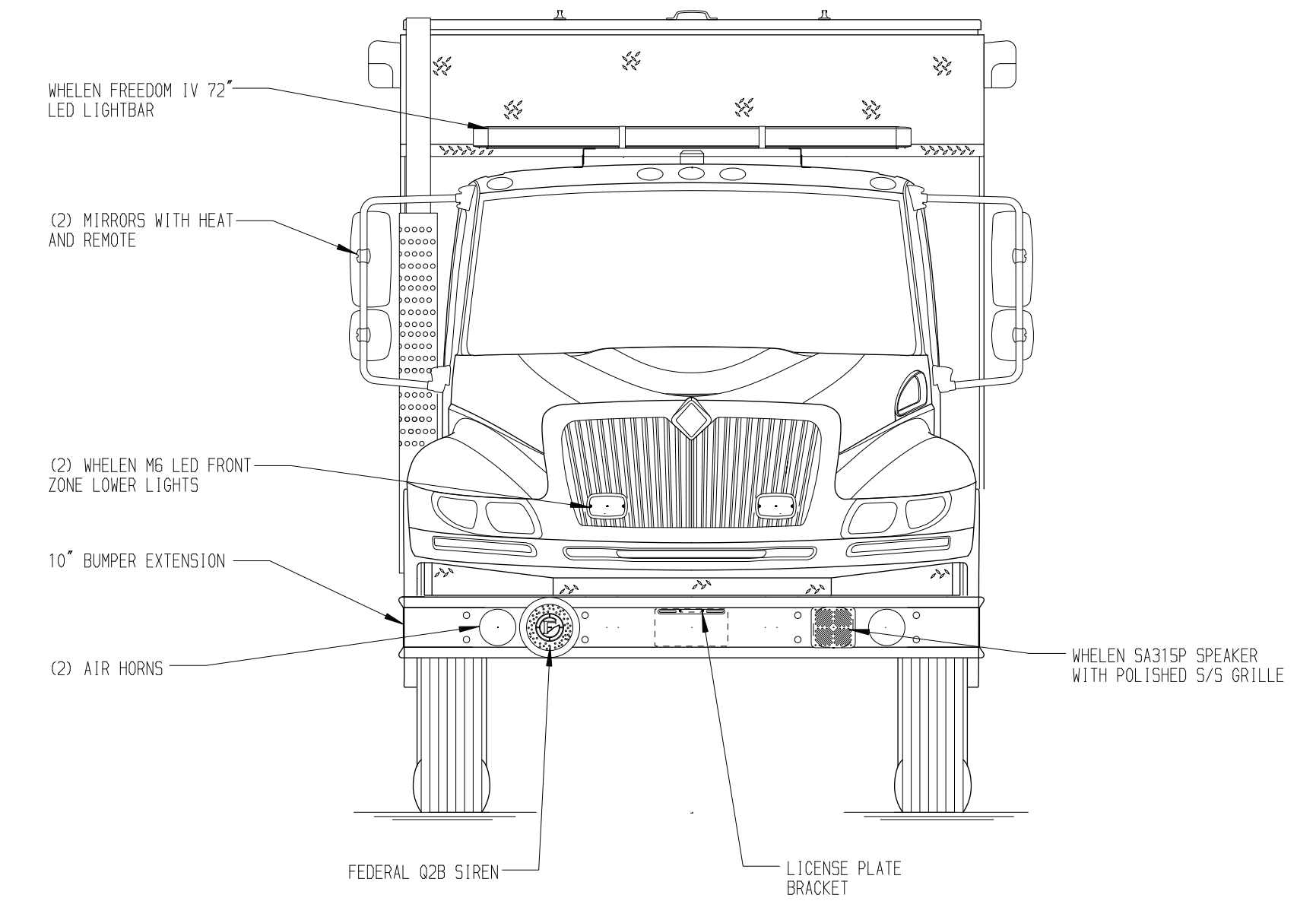
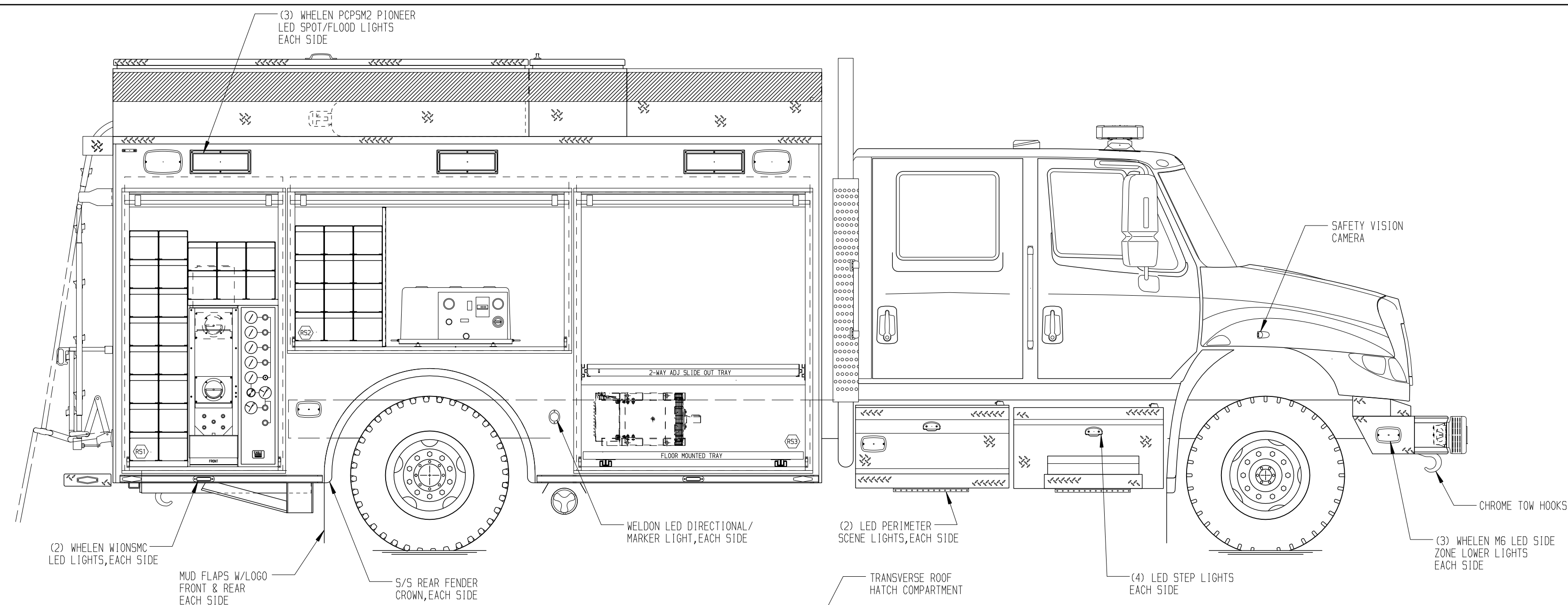


RIGHT SIDE COMPARTMENTS CONTAIN THE FOLLOWING:

COMPARTMENT R51 CONTAINS:
 - (1) RACK FOR 22 SCBA BOTTLES
 - (1) "SPACE SAVER" 2-BOTTLE FILL ENCLOSURE
 - (1) CASCADE SYSTEM CONTROL PANEL

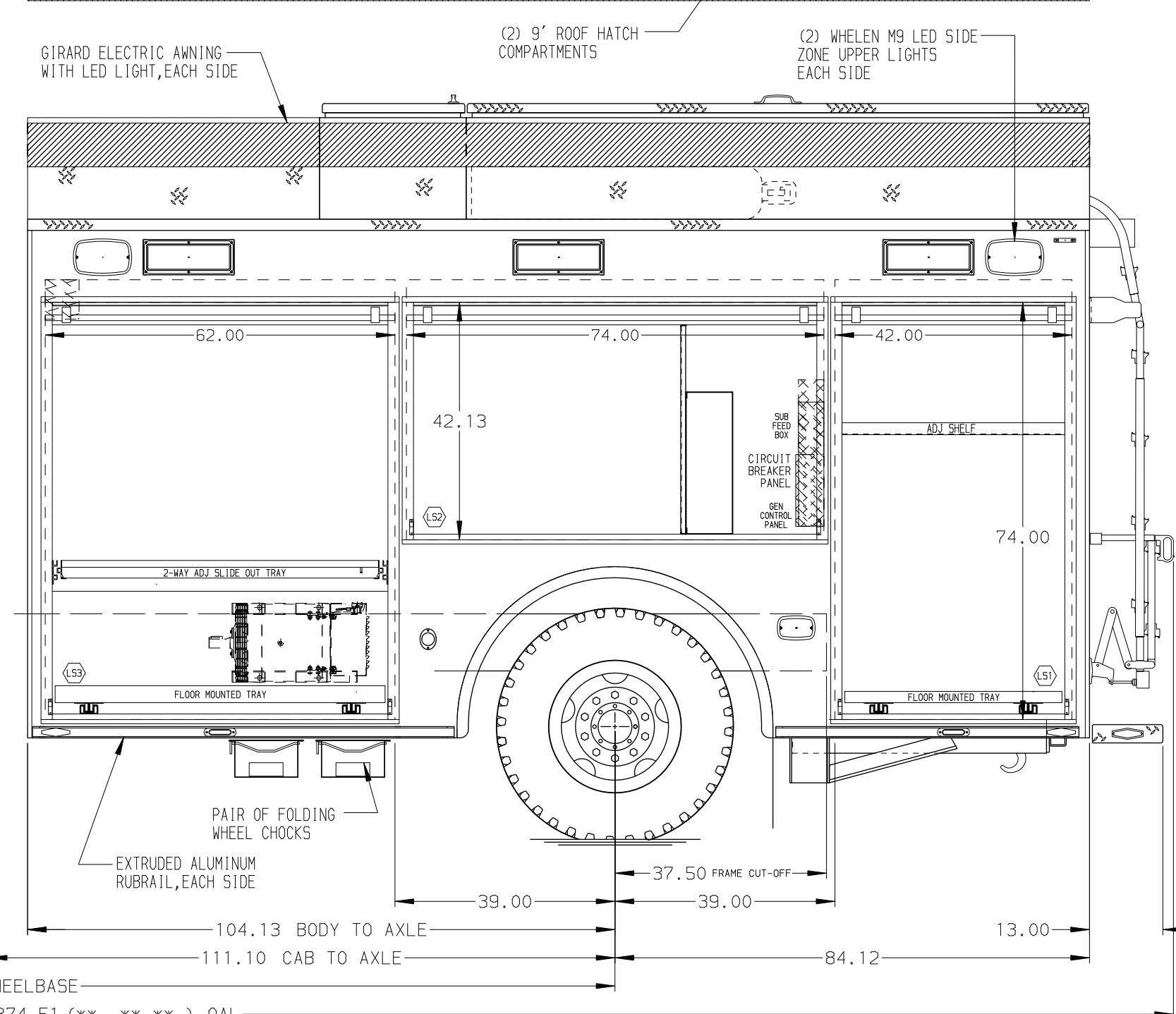
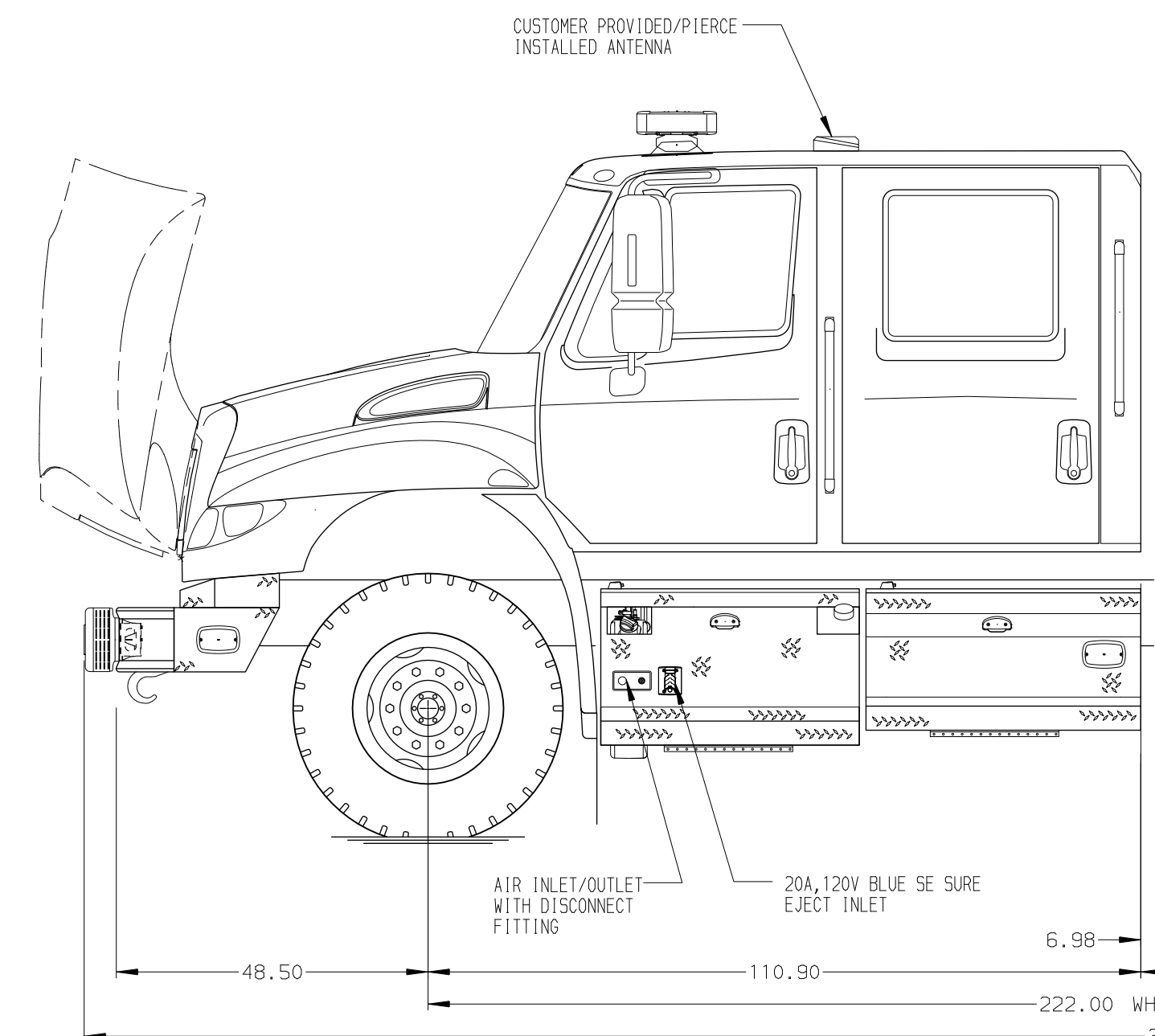
COMPARTMENT R52 CONTAINS:
 - (1) RACK FOR 12 SCBA BOTTLES
 - (1) VERTICAL COMPARTMENT DIVIDER
 - (1) BREATHING AIR BOOSTER PUMP

COMPARTMENT R53 CONTAINS:
 - (1) 2-WAY ADJ. SLIDE OUT TRAY
 - (1) 22" DP FLOOR MOUNTED TRAY



REAR COMPARTMENT CONTAINS THE FOLLOWING:

COMPARTMENT B1 CONTAINS:
 - (1) 42" DP ADJ. SHELF
 - (1) 22" DP FLOOR MOUNTED TRAY
 - (1) SUMMIT 3.2 CU. FT. REFRIGERATOR
 - (1) ELECTRIC CORD REEL WITH 200' OF 10/3 BLACK CORD
 - (1) 20A, 120V 6-PLACE RECEPTACLE

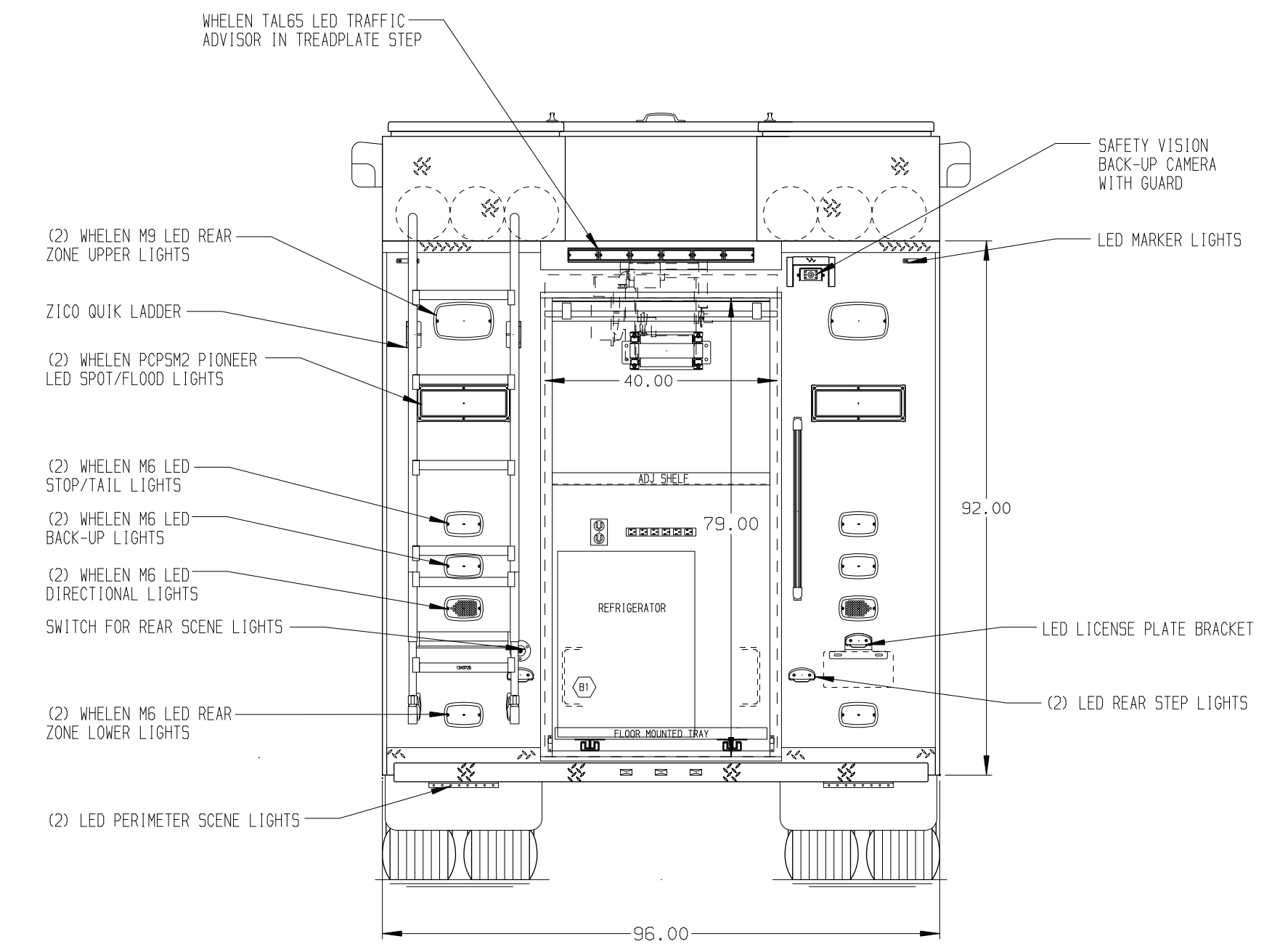


LEFT SIDE COMPARTMENTS CONTAIN THE FOLLOWING:

COMPARTMENT L51 CONTAINS:
 - (1) 22" DP ADJ. SHELF
 - (1) STD DEPTH FLOOR MOUNTED TRAY

COMPARTMENT L52 CONTAINS:
 - (1) VERTICAL COMPARTMENT DIVIDER
 - (1) CIRCUIT BREAKER PANEL
 - (1) GENERATOR METER PANEL
 - (1) SUB FEED BOX
 - (1) SPECIAL DEPTH STORAGE TROUGH

COMPARTMENT L53 CONTAINS:
 - (1) KUSSMAUL 1200 CHARGER
 - (1) STD DEPTH FLOOR MOUNTED TRAY (3 SIDES)
 - (1) 2-WAY ADJ. SLIDE OUT TRAY



NOTE
 DIMENSIONS SHOWN ARE APPROXIMATE AND ARE SUBJECT TO MINOR DEVIATIONS AS MAY OCCUR OR BE NECESSARY IN CONSTRUCTION. MINOR DETAILS NOT SHOWN.

NOTES:
 1. BATTERY CHARGE INDICATOR LOCATED ON DRIVER'S SEAT RISER
 2. PIERCE LED STRIP LIGHTS LOCATED IN ALL BODY COMPARTMENTS
 3. ONAN 25kW SINGLE PHASE PTO DRIVEN GENERATOR WITH SPLASH GUARD LOCATED BETWEEN THE FRAME RAILS

CUSTOMER APPROVAL
 APPROVED BY: _____
 DATE: _____



JOB NO. 35911
 SCALE 1:24
 DATE
 DRAWN BY DHE
 10NOV20
 CHECKED BY CDK
 20NOV20
 SHEET SIZE D
 SHEET NO. 1 OF 1

CLEAR DOOR WIDTH KEY		CHASSIS DATA	
AMDR ROLL UP DOORS:	-2 1/4"	13APR21	DHE CDK
CURTAIN ROLL UP DOORS:	-2 1/2"	13APR21	DHE CDK
PIERCE DOUBLE LIP DOORS:	-4 1/4"	05MAR21	DHE CDK
PIERCE LIFT-UP LAP DOORS:	-1 1/2"	11DEC20	DHE CDK
(EX: 60" F-F - 2 1/4" = 57 3/4" CLEAR) (F-F) = FRAME TO FRAME		REV	DATE BY CH MV

TITLE ENCORE RESCUE VEHICLE
 62.74.42
 FOR CITY OF PASADENA
 BID #857
 DWG NO. 35911AD
 JAMES CAMPBELL