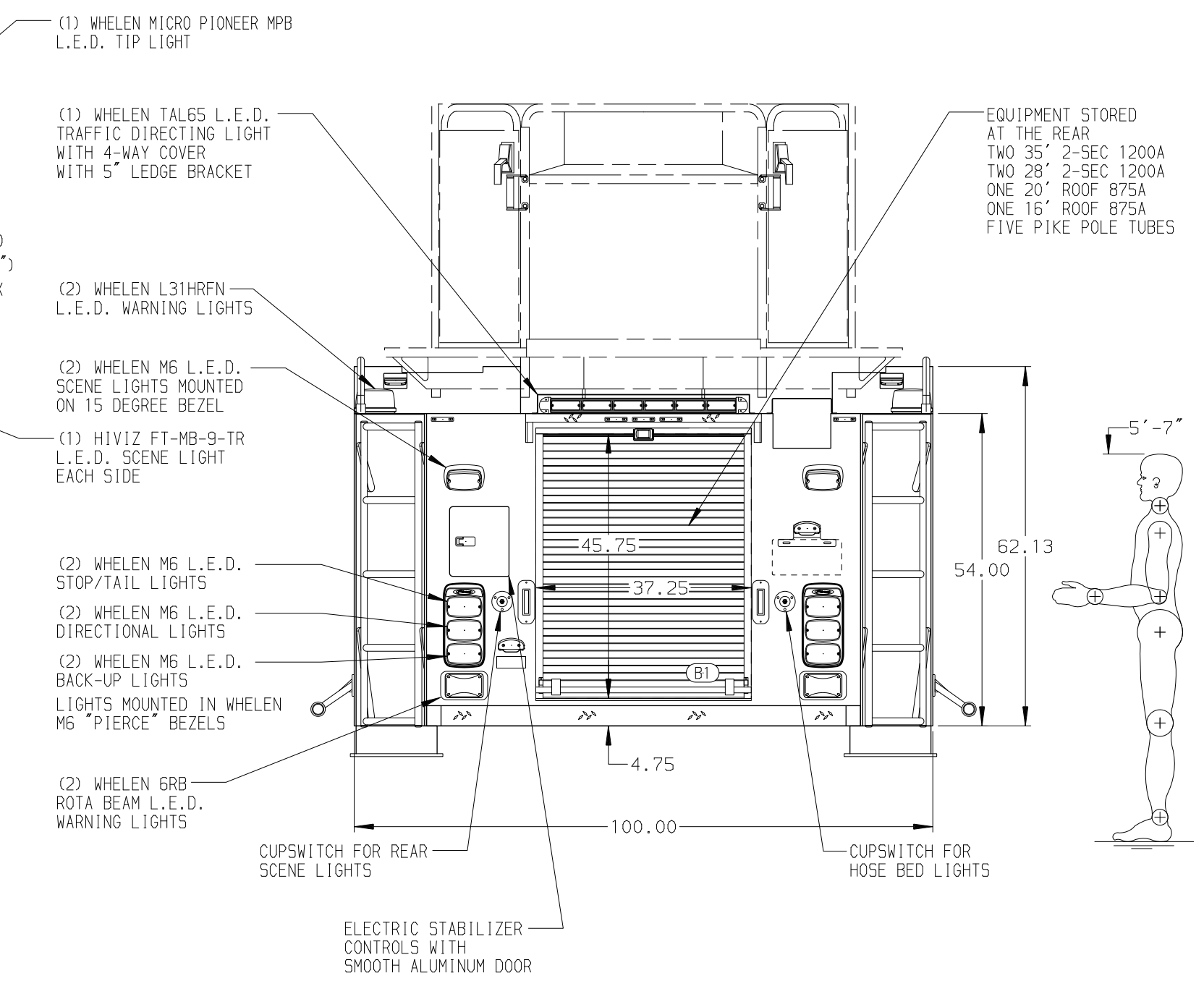
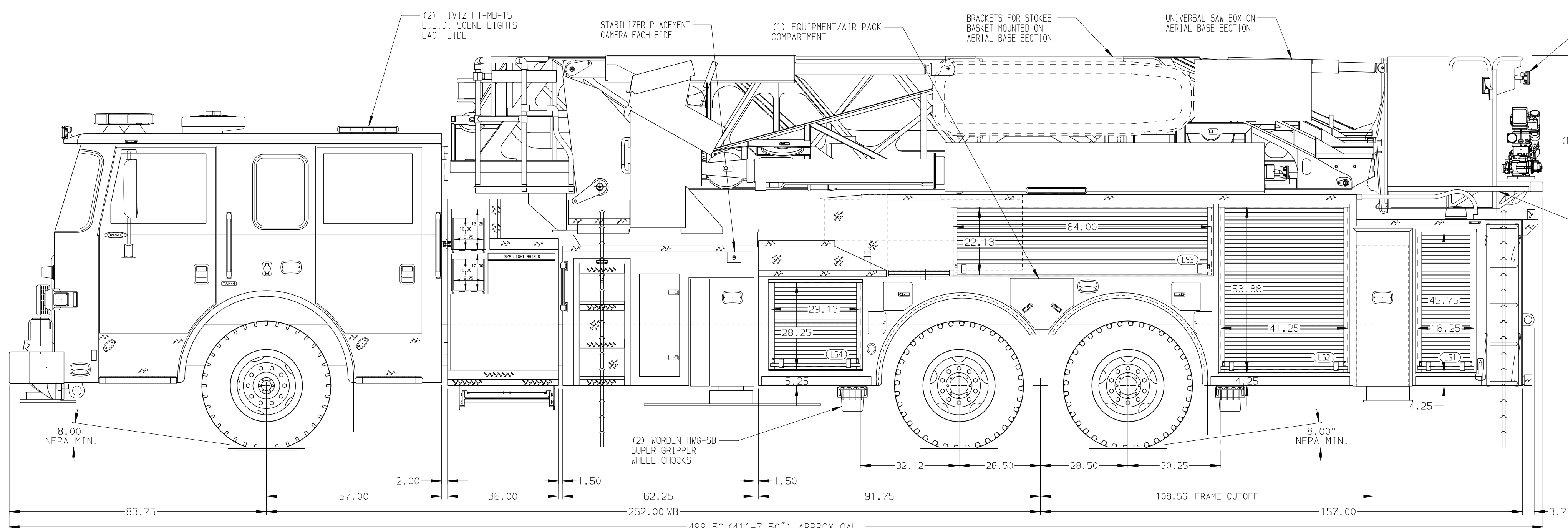


<b>BODY</b> 100' Ascendant Aerial Tower Alum Body COMPT, LEFT SIDE Full Height RollUp Doors COMPT, RIGHT SIDE Full Height RollUp Doors	<b>WATER TANK</b> 300 Galon Poly Water Tank Foam System Foam System Not Required Foam Cell Foam Cell Not Required
---	--



<b>CHASSIS</b> Arrow XT Chassis <b>ENGINE</b> 605 HP Cummins X15 Engine	<b>CAB</b> 5700 Arrow XT Cab <b>BUMPER</b> 15" Extended Painted Aluminum	<b>AXLE, FRONT, CUSTOM</b> 24,000 Lb TAK-4 Axle <b>AXLE, REAR</b> 52,000 Lb Meritor Axle	<b>TRANSMISSION</b> Allison 5th Gen, 4000 EV5 P	<b>PUMPHOUSE</b> 36" Control Zone Side Mount <b>PUMP</b> 2000 GPM Waterous S100	<b>CROSSLAYS, 1.50"</b> (2) 1.50", With Trays, 200' <b>CROSSLAYS, 2.50"</b> 2.50" Crosslay Not Required	<b>SPEEDLAYS</b> Speedlays Not Required <b>GENERATOR</b> Generator Not Required
--	---	---	--	--	--	--

**NOTE**  
DIMENSIONS SHOWN ARE APPROXIMATE AND ARE SUBJECT TO MINOR DEVIATIONS AS MAY OCCUR OR BE NECESSARY IN CONSTRUCTION. MINOR DETAILS NOT SHOWN.

- SHORELINE RECEPTACLE WITH KUSSMAUL SUPER AUTO-EJECT LOCATED ON DRIVER SIDE OF THE CAB
- AIR INLET/OUTLET WITH DISCONNECT COUPLING LOCATED ON THE DRIVER SIDE PUMP PANEL
- BATTERY CHARGER LOCATED BEHIND DRIVER'S SEAT
- BATTERY CHARGE INDICATOR LOCATED NEAR DRIVER SEAT RISER WITH BRACKET
- L.E.D. LIGHT STRIPS WITH STAINLESS STEEL PROTECTIVE COVER LOCATED IN HOSE BED
- EIGHT ADJUSTABLE FULL WIDTH/FULL DEPTH SHELVES IN COMPARTMENTS PER SHOP ORDER
- TWO FLOOR MOUNTED SLIDE-OUT TRAYS IN COMPARTMENTS PER SHOP ORDER
- TWO SLIDE-OUT TOOL BOARDS WITH REGBARD PATTERN IN COMPARTMENTS PER SHOP ORDER
- ONE TOOL DRAWER SET OF (4) IN COMPARTMENT PER SHOP ORDER
- TWO VERTICAL PARTITIONS IN COMPARTMENTS PER SHOP ORDER
- ONE VERTICAL PARTITION (SPECIAL HEIGHT) IN COMPARTMENT PER SHOP ORDER
- TEMPORARY KENT SAW SCHEMATIC LOCATED IN AERIAL BASKET PER SHOP ORDER
- DC POWER TO AERIAL BASKET
- NON-RAISED AERIAL PEDESTAL
- 3-in-1 LYNCEMBO BRACKETS AT AERIAL BASKET

<b>Pierce MANUFACTURING INC.</b>		JOB NO.	35903
TITLE		SCALE	DATE
100' ASCENDANT AERIAL TOWER AND BODY ASSEMBLY		1:24	01FEB21
DRAWN BY TKA		CHECKED BY NDA	1FEB21
FOR BUTLER BUREAU OF FIRE BUTLER, PENNSYLVANIA		SHEET SIZE	SHEET NO.
DWG NO. 35903AD		D	1 OF 1

REV	DATE	BY	CH
24FEB21	TKA	DTS	