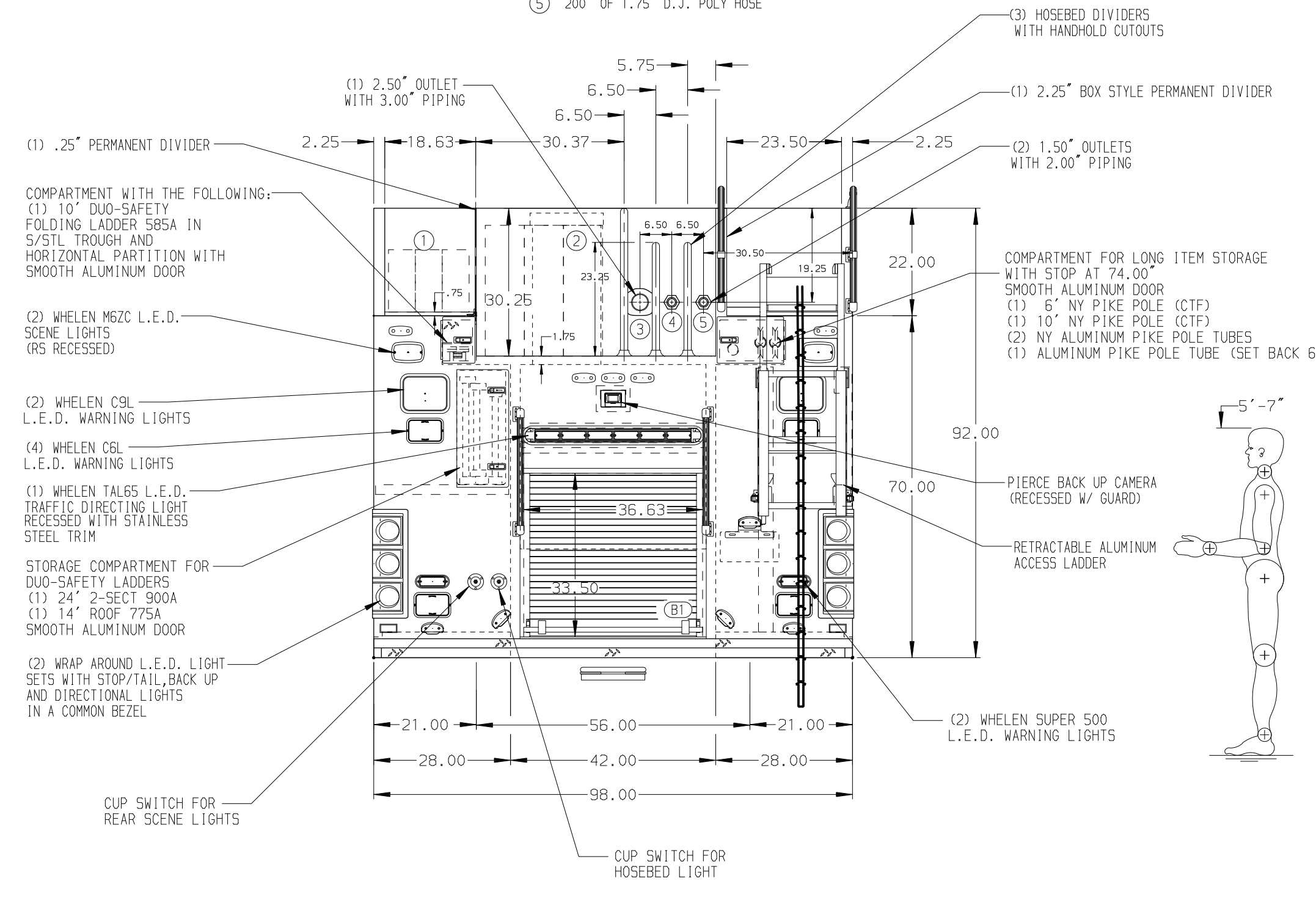
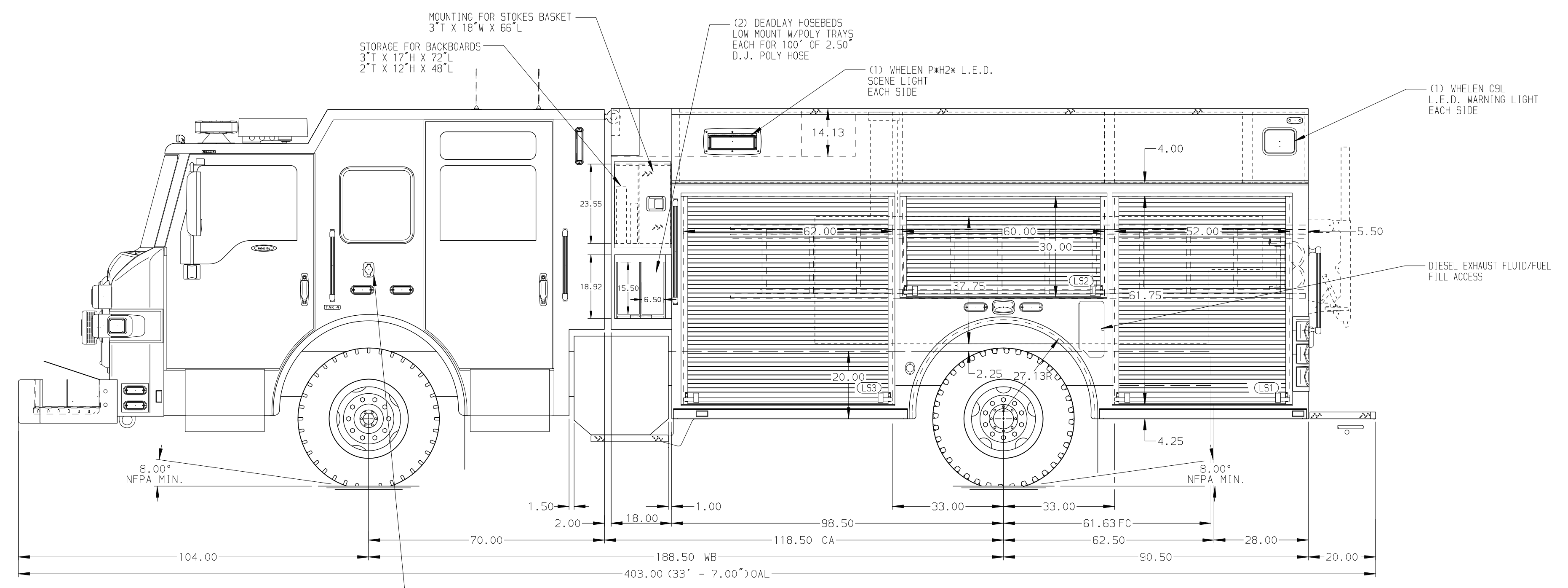


HOSEBED CAPACITIES

- 500' OF 3.00" D.J. POLY HOSE
- 1000' OF 5.00" D.J. POLY HOSE
- 200' OF 2.50" D.J. POLY HOSE
- 200' OF 1.75" D.J. POLY HOSE
- 200' OF 1.75" D.J. POLY HOSE



ALUMINUM BODY

FRONTAL IMPACT PROTECTION

NOTE
DIMENSIONS SHOWN ARE APPROXIMATE AND ARE SUBJECT TO MINOR DEVIATIONS AS MAY OCCUR OR BE NECESSARY IN CONSTRUCTION. MINOR DETAILS NOT SHOWN.

- CTF WHEEL CHOCKS AND MOUNTING BRACKETS
- AIR INLET/OUTLET WITH DISCONNECT COUPLING ON LS PUMP PANEL
- ALUMINUM TREADPLATE EXTERIOR REAR WALL OF CAB
- BATTERY CHARGER LOCATED IN RS2
- BATTERY CHARGER INDICATOR LOCATED ON DRIVER'S SIDE SEAT WITH BRACKET
- DUAL L.E.D. LIGHT STRIPS LOCATED IN HOSE BED
- DUAL L.E.D. LIGHT STRIPS LOCATED ON THE FRONT OF THE HOSEBED
- DUAL L.E.D. LIGHT STRIPS LOCATED IN THE CARGO AREA
- DUAL L.E.D. LIGHT STRIPS LOCATED IN THE HOSEBED WALKWAY
- ONE FIXED FULL WIDTH/DEPTH SHELF IN COMPARTMENT RS1
- ONE ADJUSTABLE FULL WIDTH/FULL DEPTH SHELF IN COMPARTMENTS LS1, RS3, AND B1; TWO IN LS3
- ONE ADJUSTABLE FULL WIDTH/DEPTH 2.00" HIGH SHELF IN RS3
- ONE ADJUSTABLE TILTING SLIDE-OUT TRAY WITH CABLE RELEASE IATS IN COMPARTMENT RS2
- TWO FLOOR MOUNTED SLIDE-OUT TRAYS IN COMPARTMENT RS1
- ONE ALUMINUM PEG BOARD TOOLBOARD ADDED TO EACH SLIDE-OUT TRAY IN COMPARTMENT RS1
- ONE SWING-OUT ALUMINUM TOOL BOARD IN COMPARTMENT LS2
- ONE 120V DUPLEX RECEPTACLE LOCATED IN EMS CABINET AND ON THE REAR FACING WALL OF THE ENGINE TUNNEL
- ONE RECEPTACLE STRIP LOCATED IN RS1

		JOB NO.	35873
		SCALE	DATE
TITLE	1500-D-650P, 650G WATER, 189" PUC FULL HEIGHT/DEPTH (2) DEADLAYS, (2) BUMPER CROSSLAYS, DELUGE OUTLET	DRAWN BY	SAM
FOR	CITY OF LARGO LARGO, FLORIDA	CHECKED BY	EGO
MODEL	VELOCITY	DWG NO.	35873AD
REV	DATE	BY	CH
30APR21		SAM	PPE