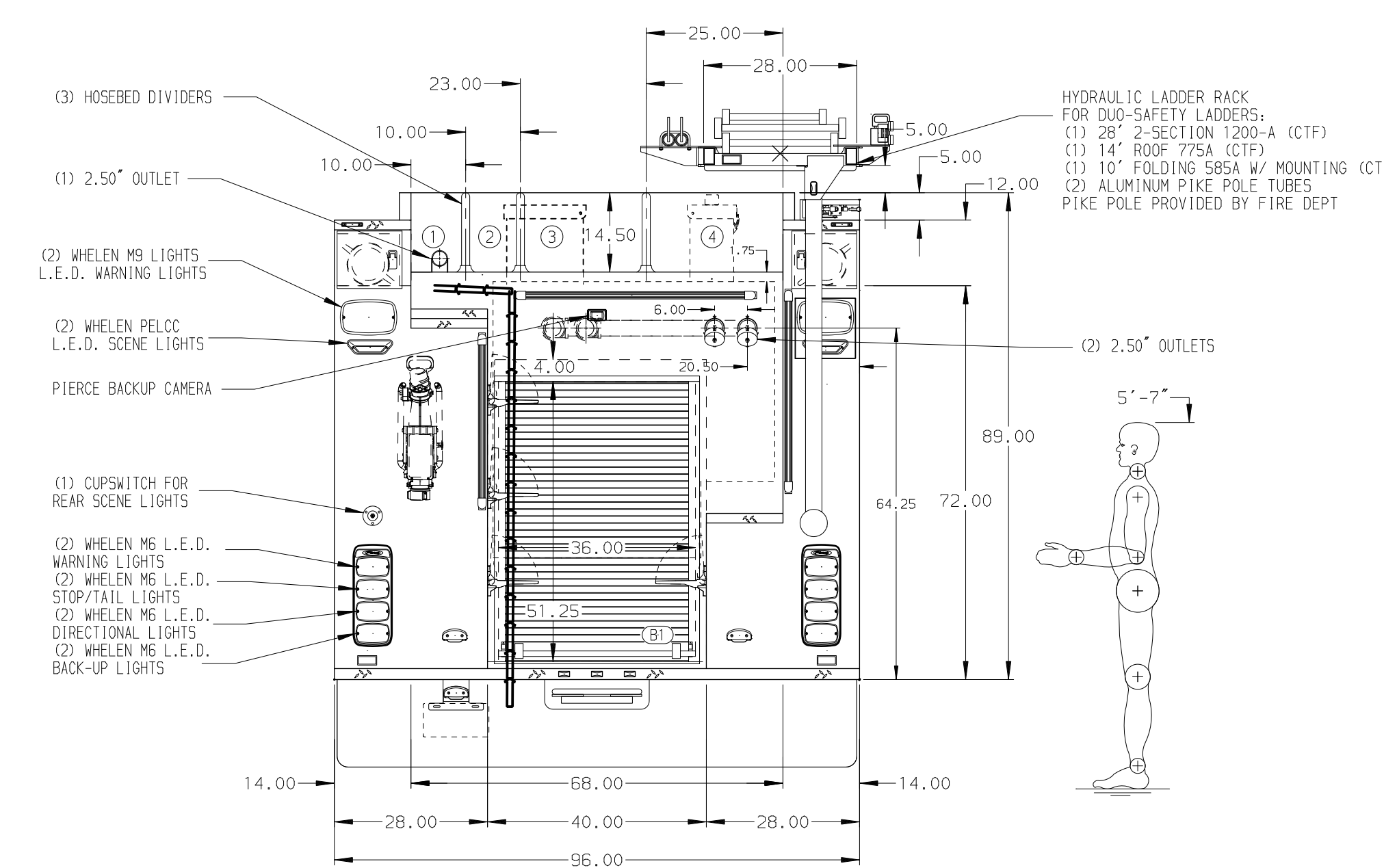
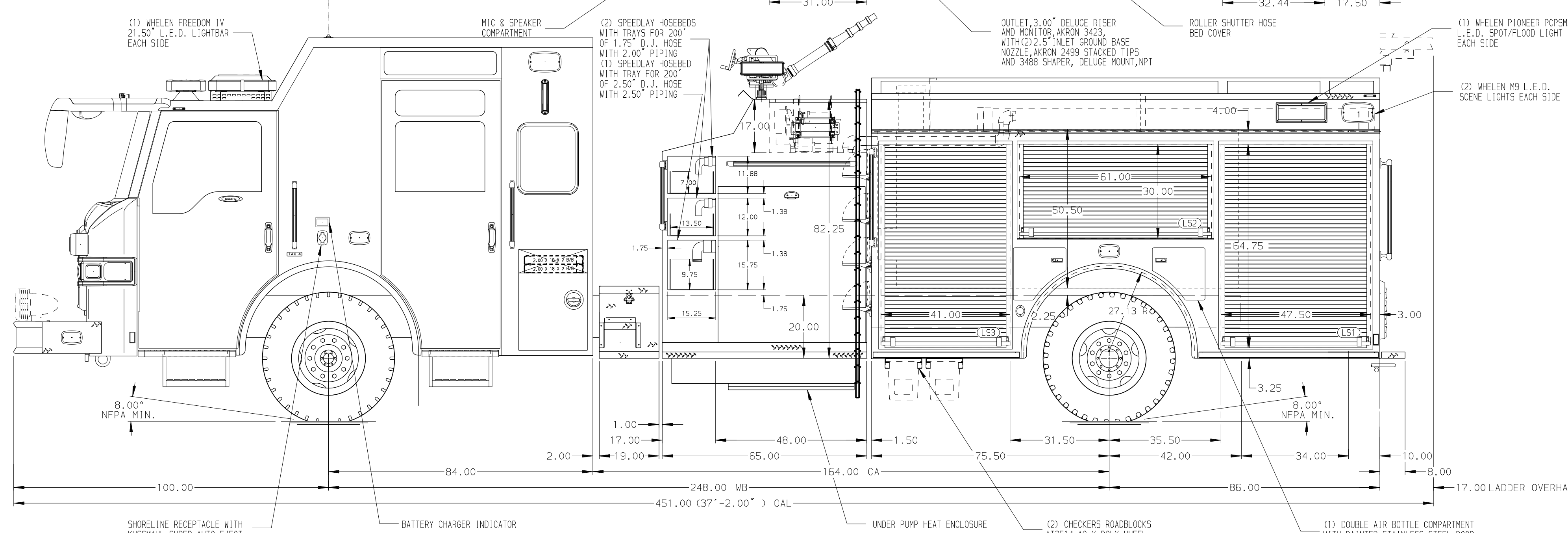


- HOSEBED CAPACITIES**
- ① - 250' OF 2.50\"/>



ALUMINUM BODY

SIDE ROLL AND FRONTAL IMPACT PROTECTION

NOTE
 DIMENSIONS SHOWN ARE APPROXIMATE AND ARE SUBJECT TO MINOR DEVIATIONS AS MAY OCCUR OR BE NECESSARY IN CONSTRUCTION. MINOR DETAILS NOT SHOWN.

1. BATTERY CHARGER/COMPRESSOR LOCATED IN COMPARTMENT L53
2. DUAL L.E.D. LIGHT STRIPS LOCATED IN HOSE BED
3. DRIP PAN GUARD FOR ROLL-UP DOOR LOCATED L51, L52, L53, R51, R52, R53 AND B1
4. TWO FULL WIDTH/DEPTH ADJUSTABLE SHELVES IN COMPARTMENT R51, R53, ONE IN L52, L53 AND R52
5. ONE ADJUSTABLE TILTING SLIDE-OUT TRAY IN COMPARTMENT L53 AND B1
6. ONE FLOOR MOUNTED SLIDE-OUT TRAY IN COMPARTMENT R51, R53, L51, L53 AND B1
7. SLIDE-OUT TOOL BOARD WITH PEGBOARD PATTERN IN COMPARTMENT L51
8. ONE VERTICAL PARTITION IN COMPARTMENT L51
9. CIRCUIT BREAKER PANEL IN COMPARTMENT L53
10. ONE HANNAY ELECTRIC REMIND CORD REEL MODEL 1618-17-16 LOCATED ABOVE PUMP, RIGHT SIDE AND LEFT SIDE
11. 120V 6-PLACE RECEPTACLE STRIP IN COMPARTMENT R51
12. AIR INLET WITH DISCONNECT COUPLING LOCATED IN DS STEP WELL
13. DEF TANK MOUNTED UNDER CAB ON THE DRIVER'S SIDE
14. ONE ADJUSTABLE SLIDE-OUT TRAY IN COMPARTMENT L53

REV	DATE	BY	CH	VELOCITY
31AUG21	JJB	PJP	MAKE	
04AUG21	JJB	PJP	PIERCE	
29JAN21	JJB	PHA	MODEL	

		JOB NO.	35814
		SCALE	DATE
TITLE	2000-D-1000P, 980G WATER W/20G FOAM, 161\"/>		
FOR	CITY OF ROGERS ROGERS, MINNESOTA		
DWG NO.	35814AD		
DRAWN BY	JJB	25JAN21	
CHECKED BY	EGO	26JAN21	
SHEET SIZE	D	SHEET NO.	1 OF 1