

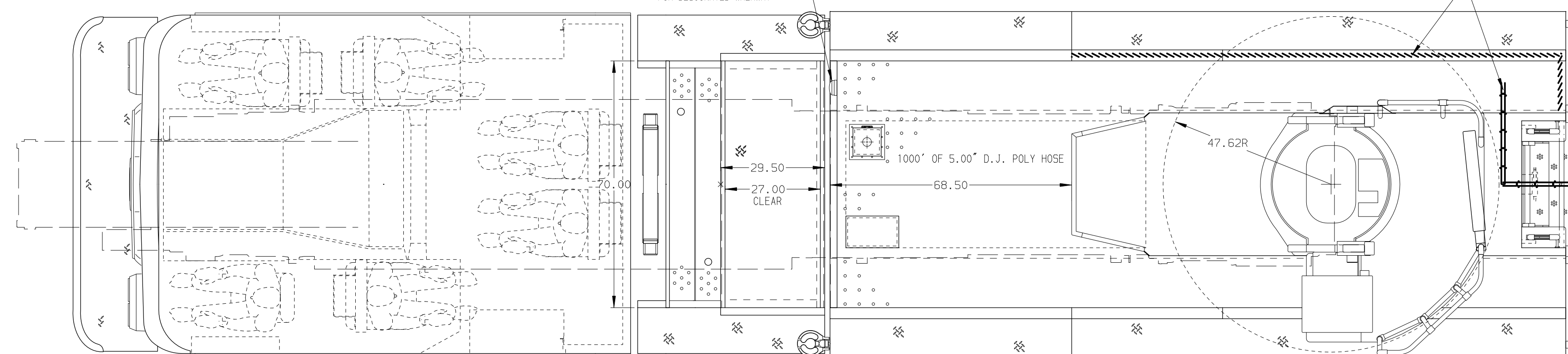
(3) SPECIAL DOUBLE AIR BOTTLE COMPARTMENTS 14.00" W x 7.50" H x 26.00" D

(1) FRP L.E.D. FLOODLIGHT FOR DESIGNATED WALKWAY

STIRRUP STEP WITH GRIP PATTERN

PIERCE SIDE VIEW CAMERA EACH SIDE

SURFACE DESIGNATION AND PATHWAY MARKINGS



29.50

27.00 CLEAR

1000' OF 5.00" D.J. POLY HOSE

47.62R

(2) GOLIGHT RADIORAY 20x46T L.E.D. SPOTLIGHTS

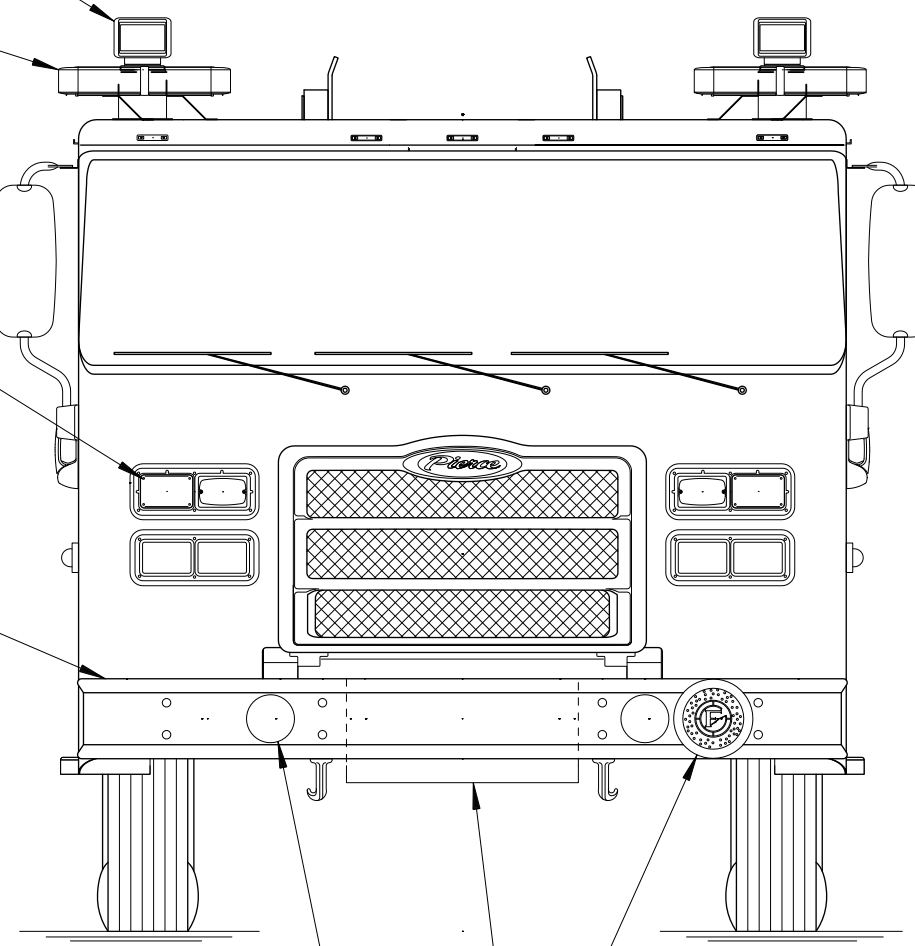
(2) WHELEN FREEDOM IV 21.50" L.E.D. LIGHTBARS

RETRACT HEATED/REMOTE CONTROL MIRRORS WITH CONVEX SECTION

(1) WHELEN 600TAR L.E.D. DIRECTIONAL LIGHT AND (1) WHELEN M6 L.E.D. WARNING LIGHT IN A COMMON BEZEL EACH SIDE

MOUNTING PROVISIONS FOR FRONT INLET

(3) WHELEN M6 L.E.D. WARNING LIGHTS EACH SIDE

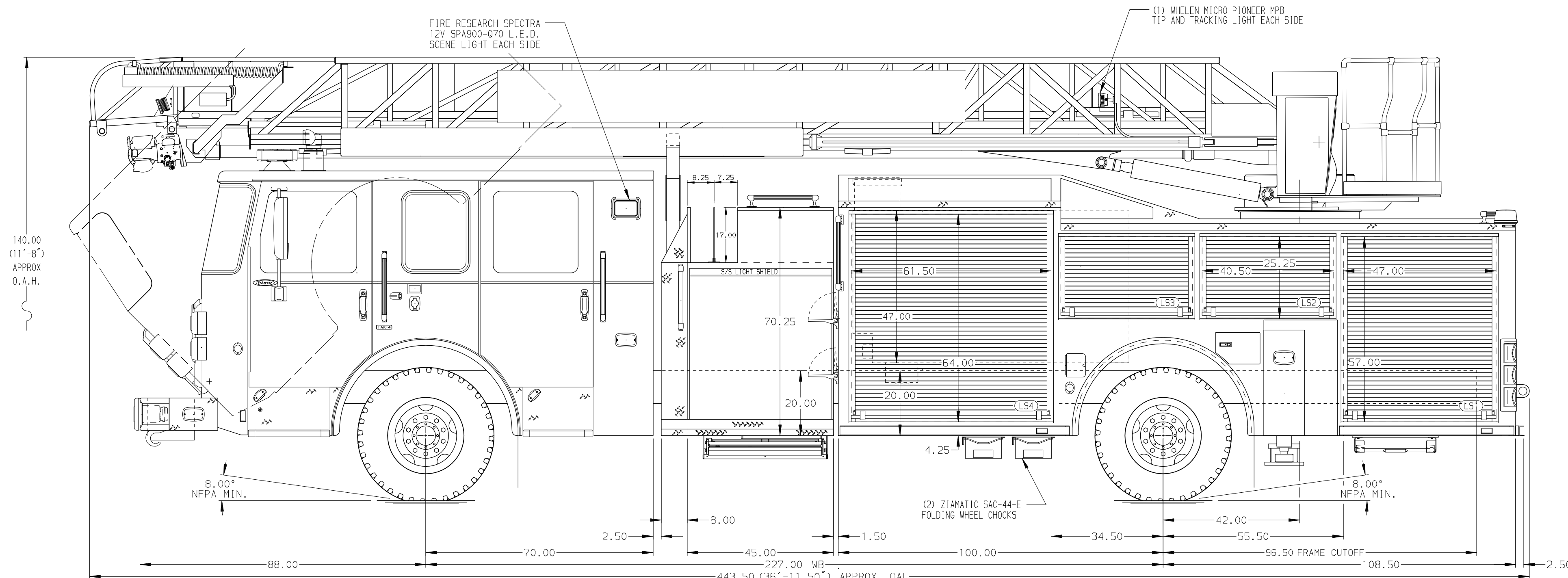


(2) GROVER AIR HORNS

(1) FEDERAL BP200-0 SPEAKER

CENTER HOSE TRAY FOR 125' OF 1.75" HOSE

| BODY | WATER TANK |
|-----------------------------|--|
| 75' HAL Aluminum Body | 500 Gallon Poly Water Tank |
| COMPT, LEFT SIDE FRONT | Foam System |
| Full Height RollUp Forward | Plumbing for Future Husky Foam System |
| COMPT, LEFT SIDE REAR | Foam Cell |
| Full Height RollUp Rearward | 20 Gallon Foam Cell, Non-Reduced Water |
| COMPT, RIGHT SIDE FRONT | |
| Full Height RollUp Forward | |
| COMPT, RIGHT SIDE REAR | |
| Full Height RollUp Rearward | |



FIRE RESEARCH SPECTRA 12V SPA900-070 L.E.D. SCENE LIGHT EACH SIDE

(1) WHELEN MICRO PIONEER MP8 TIP AND TRACKING LIGHT EACH SIDE

140.00 (11'-8") APPROX O.A.H.

8.00" NFPA MIN.

70.00

2.50

8.00

45.00

1.50

443.50 (36'-11.50") APPROX. OAL

227.00 WB

61.50

47.00

64.00

20.00

4.25

100.00

34.50

55.50

96.50 FRAME CUTOFF

108.50

8.00" NFPA MIN.

(2) ZIAMATIC SAC-44-E FOLDING WHEEL CHOCKS

(2) WHELEN L31HRFN L.E.D. WARNING LIGHTS

(2) WHELEN MPR15 RECESSED SCENE LIGHTS

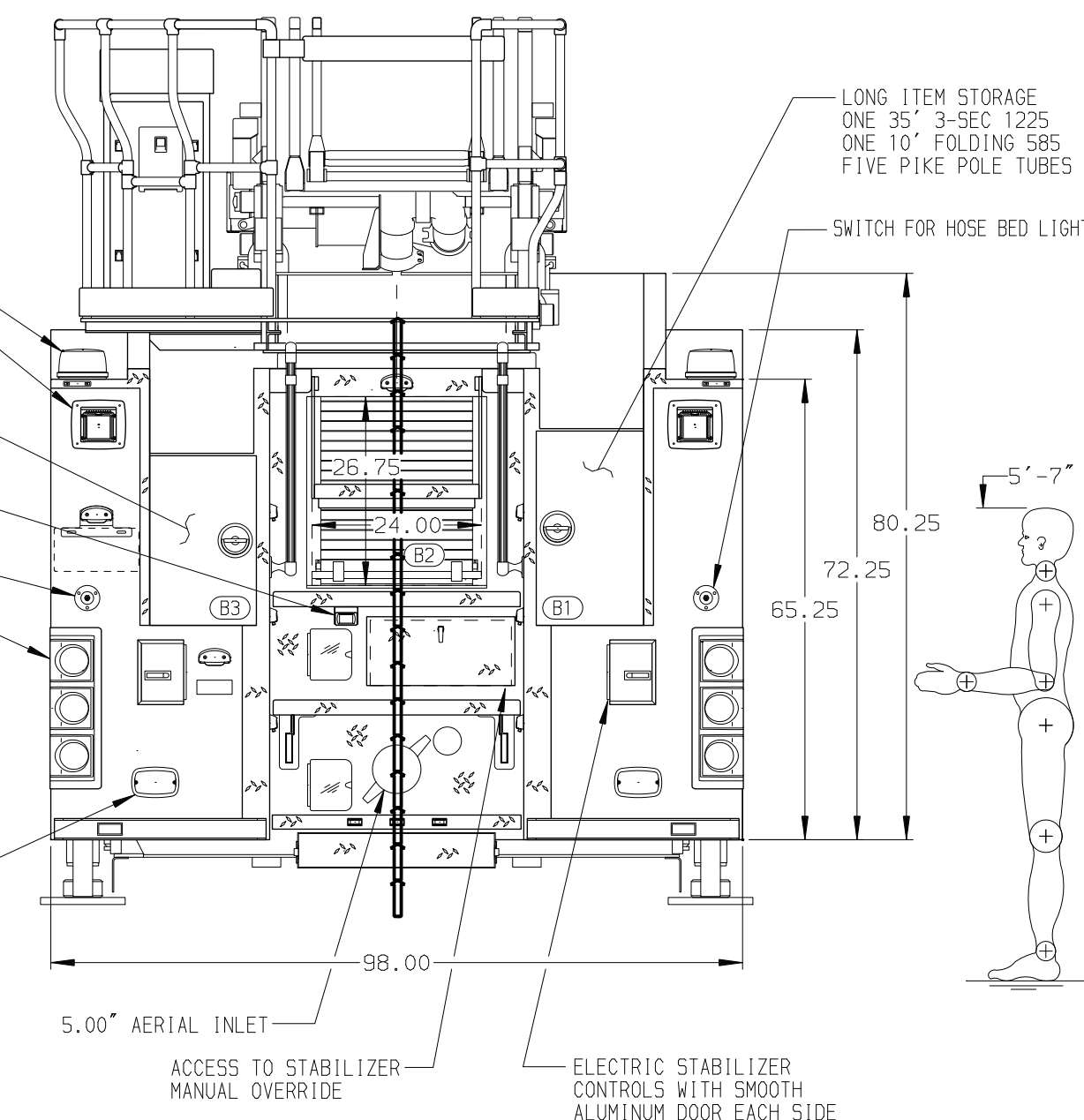
LONG ITEM STORAGE ONE 24' 2-SEC 900 TWO 16' ROOF 875 TWO PIKE POLE TUBES

PIERCE BACK UP CAMERA

SWITCH FOR REAR SCENE LIGHTS

(2) WRAP AROUND L.E.D. LIGHT SETS WITH STOP/TAIL, BACK UP AND DIRECTIONAL LIGHTS IN A COMMON BEZEL

(2) WHELEN M6 L.E.D. WARNING LIGHTS



LONG ITEM STORAGE ONE 35' 3-SEC 1225 ONE 10' FOLDING 585 FIVE PIKE POLE TUBES

SWITCH FOR HOSE BED LIGHTS

80.25

72.25

65.25

5'-7"

5.00" AERIAL INLET

ACCESS TO STABILIZER MANUAL OVERRIDE

ELECTRIC STABILIZER CONTROLS WITH SMOOTH ALUMINUM DOOR EACH SIDE

| CHASSIS | CAB | AXLE, FRONT, CUSTOM | TRANSMISSION | PUMPHOUSE | CROSSLAYS, 1.50" | SPEEDLAYS |
|--------------------------|------------------------------|------------------------|-----------------------------|-----------------------------|-----------------------------|------------------------|
| Enforcer Chassis | 7000 Enforcer Cab | 19,500 Lb TAK-4 Axle | Allison 5th Gen, 3000 EV5 P | 45" Control Zone Side Mount | (2) 1.50" Standard Capacity | Speedlays Not Required |
| ENGINE | BUMPER | AXLE, REAR | | PUMP | CROSSLAYS, 2.50" | GENERATOR |
| 400 HP Cummins L9 Engine | 19" Extended Stainless Steel | 33,500 Lb Meritor Axle | | 1500 GPM Waterous CSU | 2.50" Crosslay Not Required | Generator Not Required |

NOTE
DIMENSIONS SHOWN ARE APPROXIMATE AND ARE SUBJECT TO MINOR DEVIATIONS AS MAY OCCUR OR BE NECESSARY IN CONSTRUCTION. MINOR DETAILS NOT SHOWN.

- ONE 1.50 OUTLET WITH 2.00 PIPING AND SWIVEL LOCATED IN CENTER BUMPER TRAY
- SHORELINE RECEPTACLE WITH KUSSMAUL SUPER AUTO-EJECT LOCATED ON DRIVER SIDE OF THE CAB
- AIR INLET WITH DISCONNECT COUPLING IN THE DRIVER SIDE STEPPWELL
- BATTERY CHARGE INDICATOR LOCATED BEHIND DRIVER SEAT
- DUAL L.E.D. LIGHT STRIPS LOCATED IN HOSE BED
- FOUR ADJUSTABLE SHELVES IN COMPARTMENTS PER SHOP ORDER
- ONE ALUMINUM PEGBOARD ON BACK WALL COMPARTMENT PER SHOP ORDER
- 7.00" AERIAL LIMITED RETRACTION
- 1.50" RAISED AERIAL PEDESTAL
- 1500 GPM HIGH FLOW WATERWAY
- LIFTING EYE RESCUE ATTACHMENT AT AERIAL TIP

| REV | DATE | BY | CH |
|---------|------|-----|----|
| 16FEB21 | TKA | THS | |

| Pierce MANUFACTURING INC. | | JOB NO. | 35778 | | |
|---------------------------|---------|--|------------|-----|-----------|
| | | SCALE | 1:24 | | |
| | | DATE | | | |
| CHASSIS DATA | TITLE | 75 AERIAL LADDER & BODY ASSEMBLY (HAL) | DRAWN BY | TKA | 270CT20 |
| MAKE | FOR | HASKELL FIRE DEPARTMENT | CHECKED BY | THS | 280CT20 |
| PIERCE | | HASKELL, AR | SHEET SIZE | | SHEET NO. |
| MODEL | DWG NO. | 35778AD | | | 1 OF 1 |