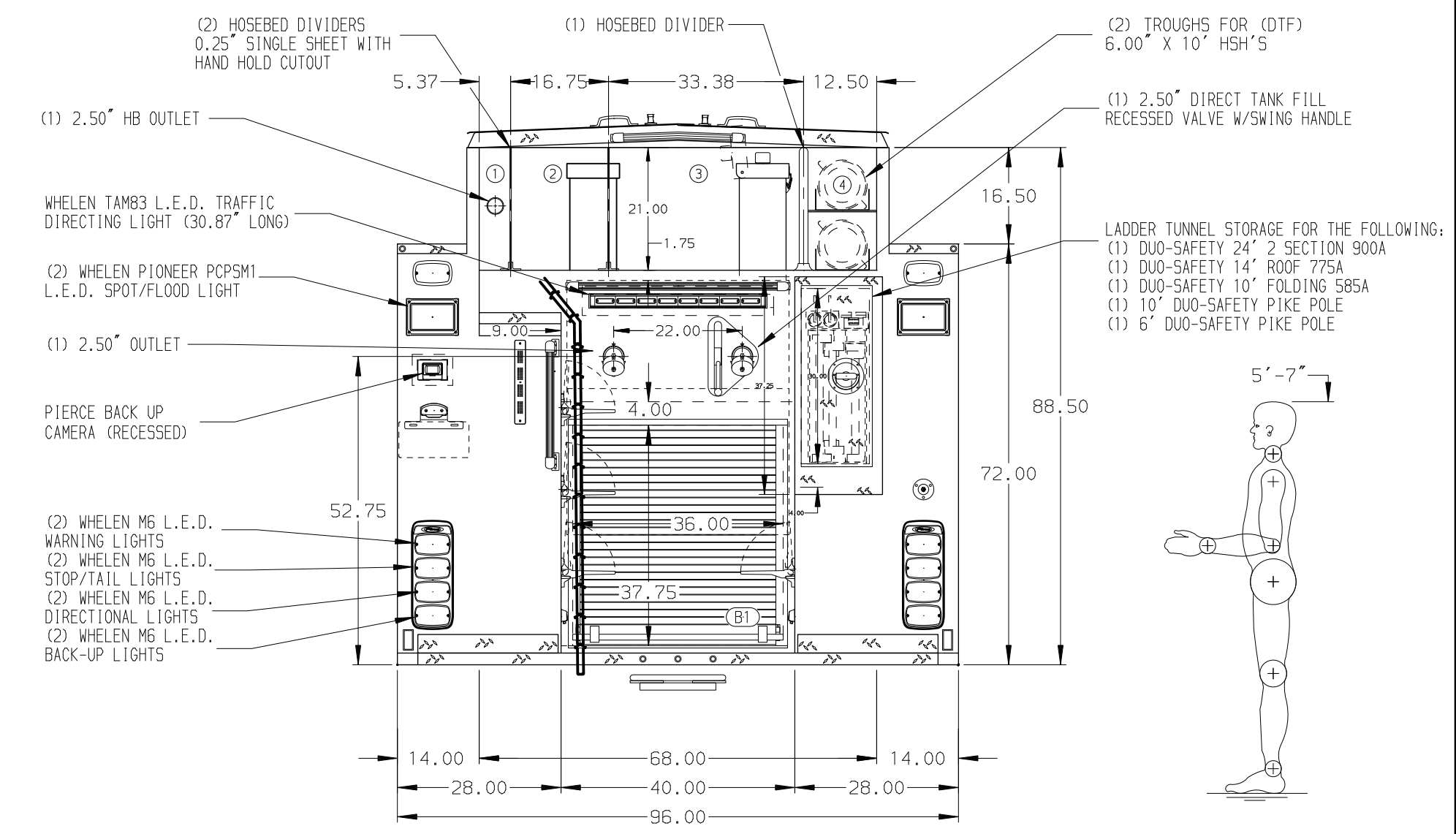
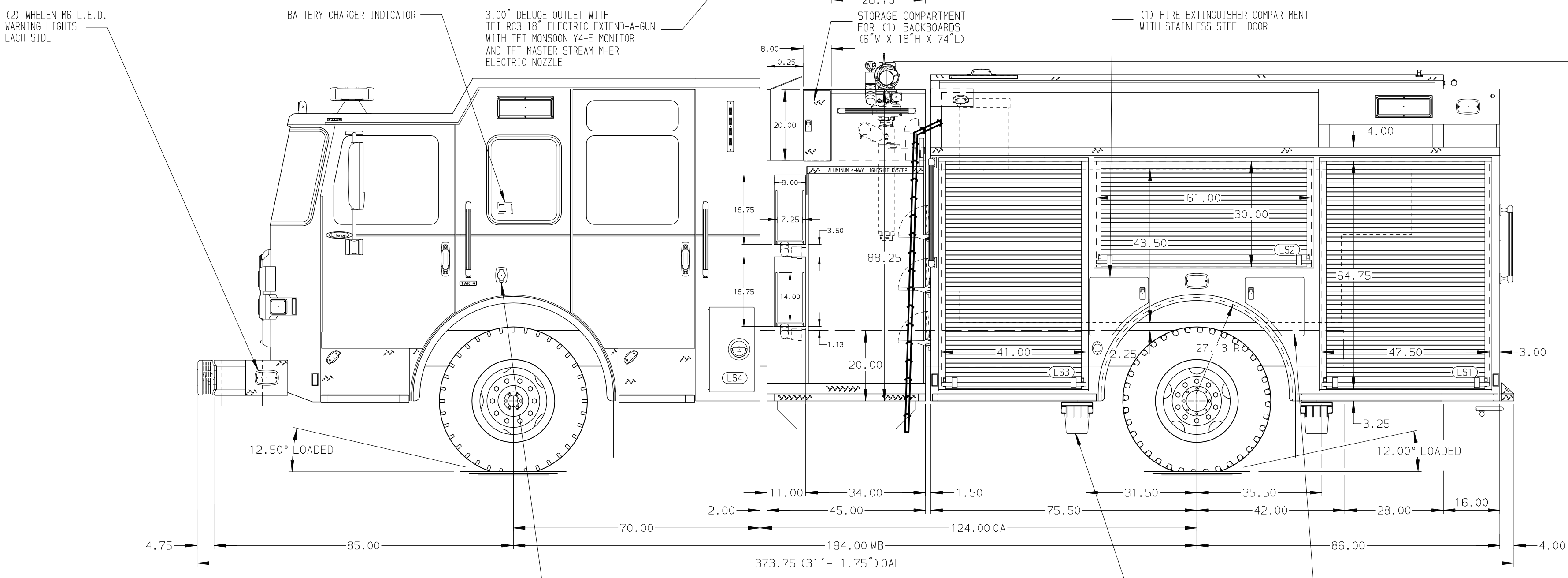


- HOSBED CAPACITIES**
- ① 200' OF 2.50" D. J. POLY HOSE
  - ② 800' OF 3.00" D. J. POLY HOSE
  - ③ 800' OF 5.00" D. J. POLY HOSE
  - ④ (2) 6' x 10' HARD SUCTION HOSE (DTF)



ALUMINUM BODY

MAXIMUM O.A.L. 377.75"

MAXIMUM O.A.H. 120.00"

**NOTE**  
DIMENSIONS SHOWN ARE APPROXIMATE AND ARE SUBJECT TO MINOR DEVIATIONS AS MAY OCCUR OR BE NECESSARY IN CONSTRUCTION. MINOR DETAILS NOT SHOWN.

1. BATTERY CHARGER/COMPRESSOR LOCATED IN COMPARTMENT LS3
2. DRIP PAN GUARD FOR ROLL-UP DOOR LOCATED IN LS1, LS2, LS3, RS1, RS2, RS3 AND B1
3. TWO FULL WIDTH/DEPTH ADJUSTABLE SHELVES IN COMPARTMENT RS1, RS3 AND ONE IN B1
4. ONE ADJUSTABLE SLIDE-OUT TRAY IN COMPARTMENT LS3
5. ONE ADJUSTABLE TILTING SLIDE-OUT TRAY IN COMPARTMENT LS2 AND LS3
6. ONE FLOOR MOUNTED SLIDE-OUT TRAY IN COMPARTMENT RS1, RS3, LS3, B1 AND TWO IN LS1
7. SWING-OUT TOOL BOARD WITH PEGBOARD PATTERN IN COMPARTMENT RS2
8. TWO ADJUSTABLE TOOLBOARDS MOUNTED TO SLIDE-OUT TRAY IN COMPARTMENT LS1
9. PARTITION BETWEEN COMPARTMENTS LS1/B1 AND RS1/B1
10. AIR INLET/OUTLET WITH DISCONNECT FITTING LOCATED ON DRIVER'S SIDE PUMP PANEL

11. ALUMINUM PEGBOARD ON BACK WALL OF COMPARTMENT LS2
12. ALUMINUM PEGBOARD WITH TRACKS ON THE SIDE WALLS OF COMPARTMENT LS1
13. 120V DUPLEX RECEPTACLE LOCATED IN RS1, RS3 AND LS3

REV	DATE	BY	CH	ENFORCER
12APR21	JRO	PJP		CHASSIS DATA
30MAR21	JJB	PJP		MAKE
16MAR21	JJB	PJP		PIERCE
11JAN21	JJB	EGO		MODEL

TITLE	1500-D-750P, 730G WATER W/ 20G FOAM, 161" BODY LADDERS IN BTWN TANK & SS, (2) SPEEDLAYS, (1) DEADLAYS
FOR	HAMILTON CITY FIRE PROTECTION DISTRICT HAMILTON CITY, CALIFORNIA
DWG NO.	35776AD

JOB NO.	35776
SCALE	1:24
DATE	
DRAWN BY	JJB
CHECKED BY	CDU
SHEET SIZE	D
SHEET NO.	1 OF 1