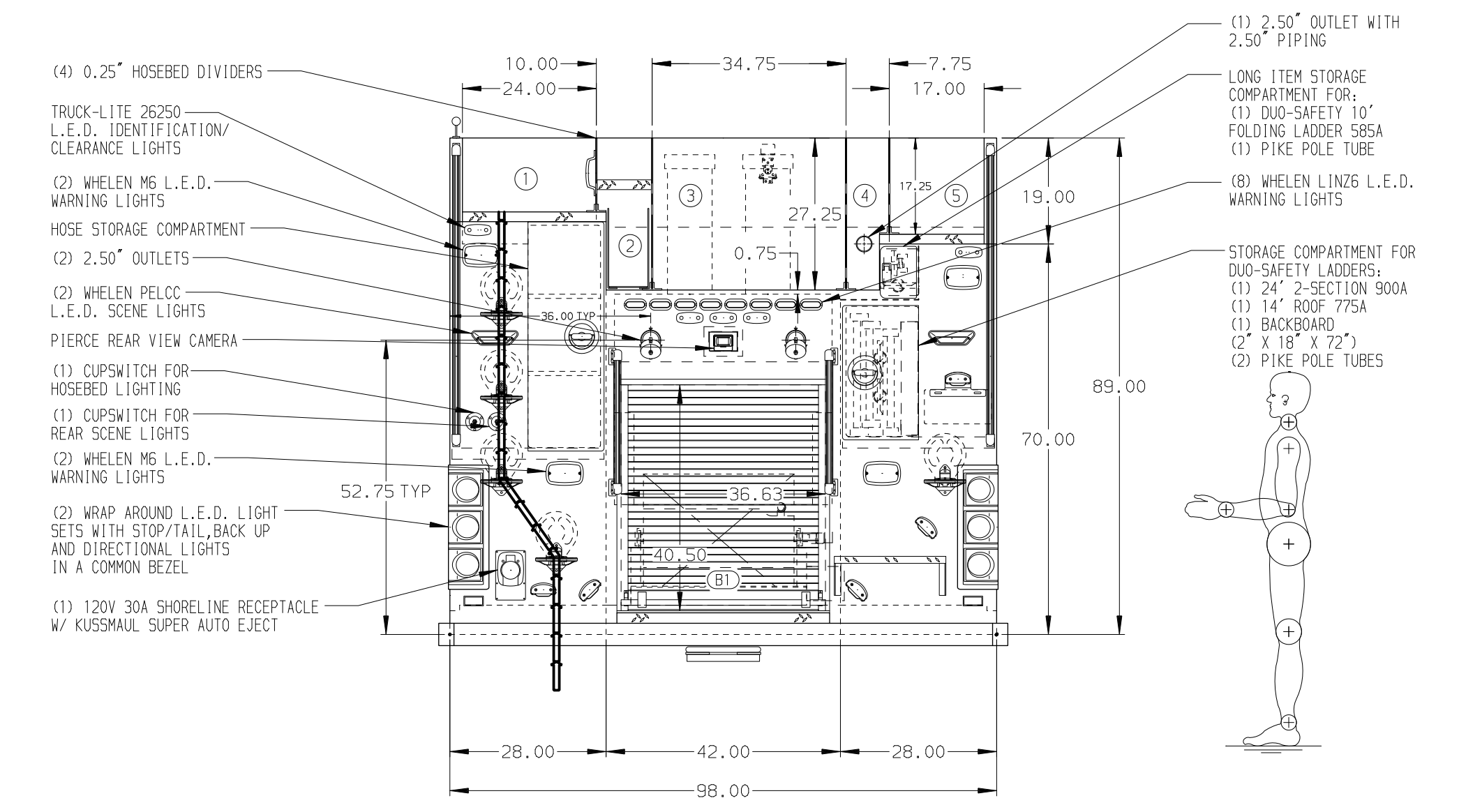
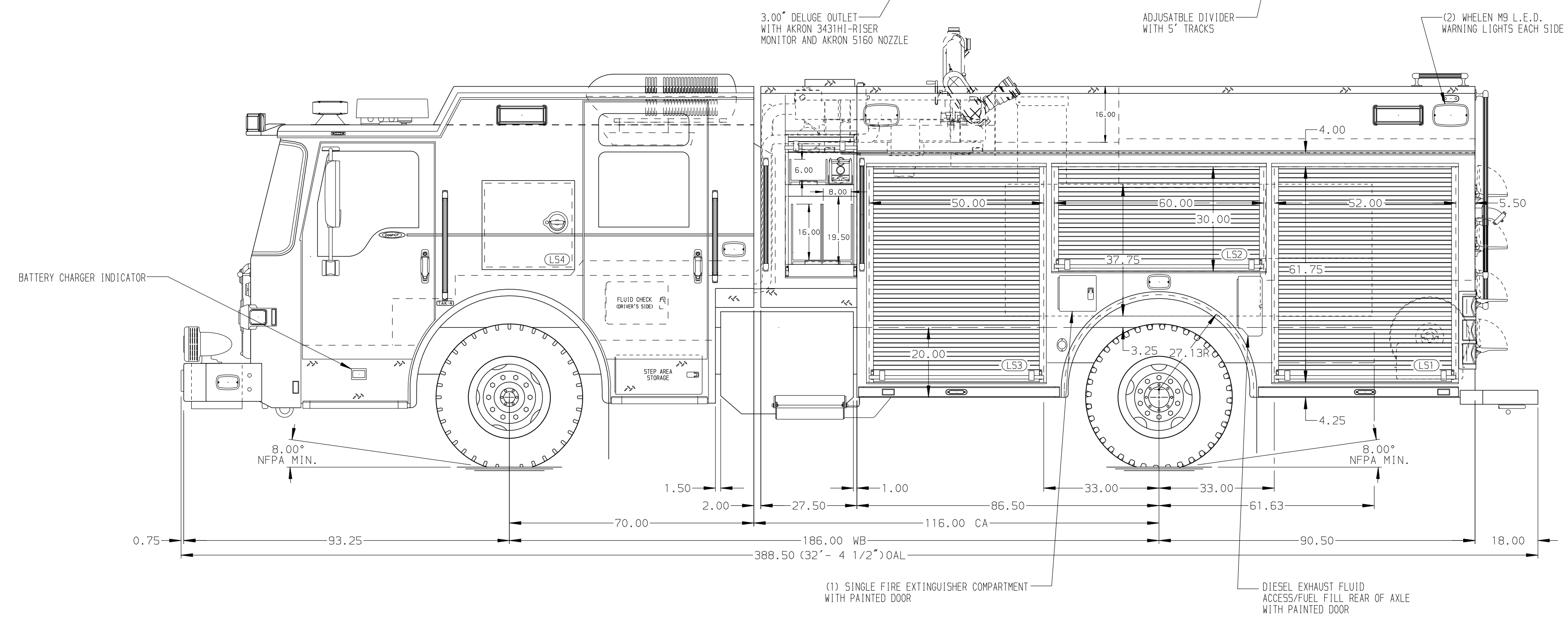


- HOSEBED CAPACITIES
- 1 WALKWAY AREA - NO HOSEBED COVER
 - 2 ALUMINUM TRAY FOR 200' OF 1.75" D.J. POLY HOSE 7.00" W X 14.00" H X 92.00" L
 - 3 1000' OF 5.00" D.J. POLY HOSE
 - 4 200' OF 2.50" D.J. POLY HOSE
 - 5 500' OF 3.00" D.J. POLY HOSE



ALUMINUM BODY MAXIMUM O.A.W. 117.00" FRONTAL IMPACT PROTECTION

NOTE
 DIMENSIONS SHOWN ARE APPROXIMATE AND ARE SUBJECT TO MINOR DEVIATIONS AS MAY OCCUR OR BE NECESSARY IN CONSTRUCTION.
 MINOR DETAILS NOT SHOWN.

1. ONSPO AUTOMATIC TIRE CHAINS TO BE PROVIDED AT REAR
2. VOGEL LUBE SYSTEM PUMP LOCATED PER SHOP ORDER
3. ALUMINUM TREADPLATE EXTERIOR REAR WALL OF CAB
4. BATTERY CHARGER LOCATED ON TOP OF OUTBOARD EMS COMPARTMENT
5. PERIMETER SCENE LIGHTS LOCATED PER SHOP ORDER
6. P25 L.E.D. LIGHTS LOCATED IN HOSE BED AREA
7. ALL FOLDING STEPS TO BE TRIDENT WITH INTEGRATED L.E.D. LIGHT UNLESS SPECIFIED
8. PIERCE LOGO MUDFLAPS FRONT AND REAR
9. STAINLESS STEEL FENDER CROWNS FRONT AND REAR
10. ONE AIR INLET/OUTLET WITH DISCONNECT FITTING AT LEFT SIDE PUMP PANEL

CHASSIS DATA	TITLE	1500-500 WATER/40 FOAM, 177" RESCUE, LADDERS IN BODY
MAKE	FOR	CROSSLAYS, DELUGE, BOOSTER REEL, FOAM SYSTEM
PIERCE	IRVING FIRE DEPARTMENT	
MODEL	IRVING, TEXAS	
DASH CF	DWG NO.	35747AD-SH1

Pierce MANUFACTURING INC.

JOB NO. 35747
 SCALE 1:24 DATE
 DRAWN BY JRO 04DEC20
 CHECKED BY KBO 11DEC20
 SHEET SIZE D SHEET NO. 1 OF 2