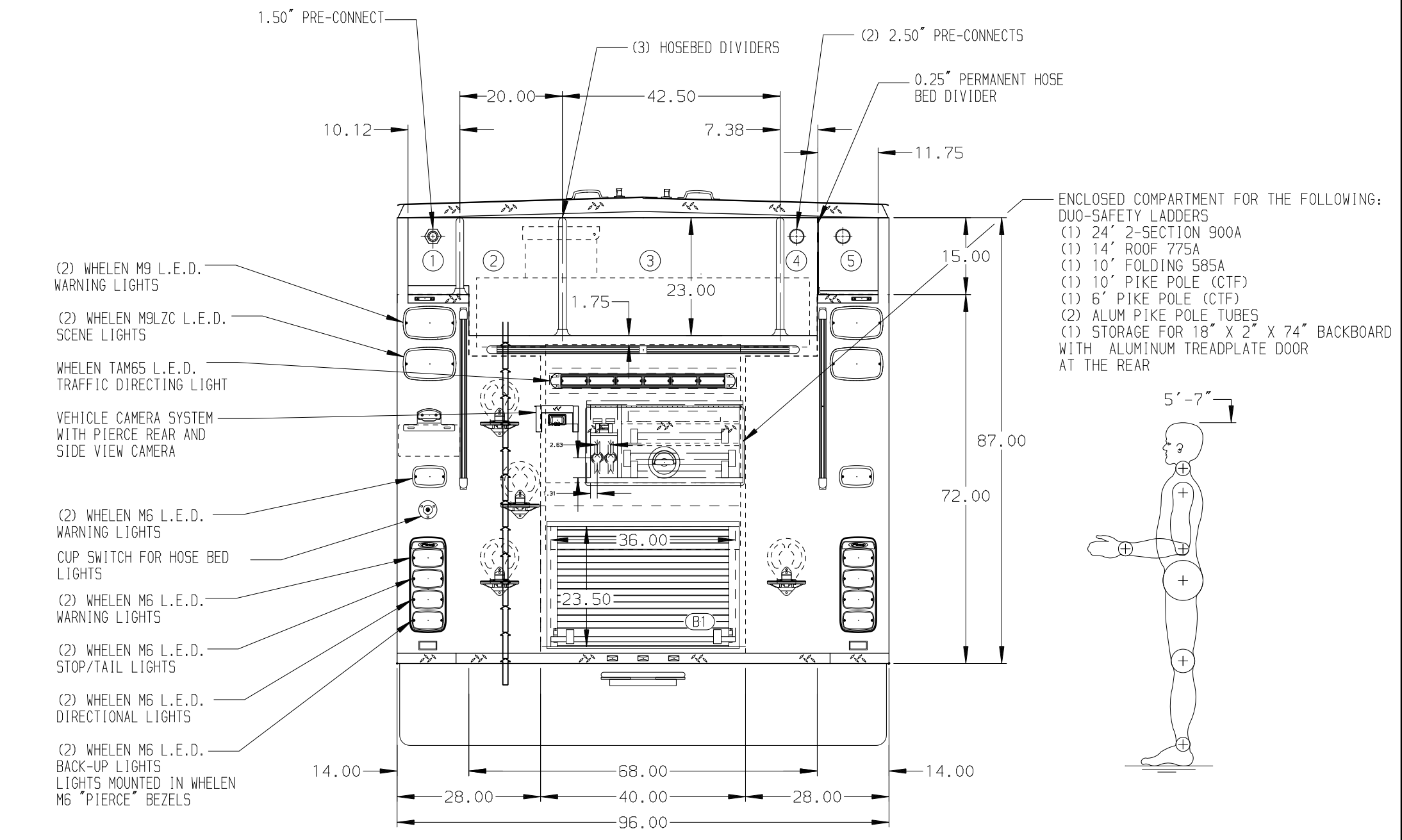
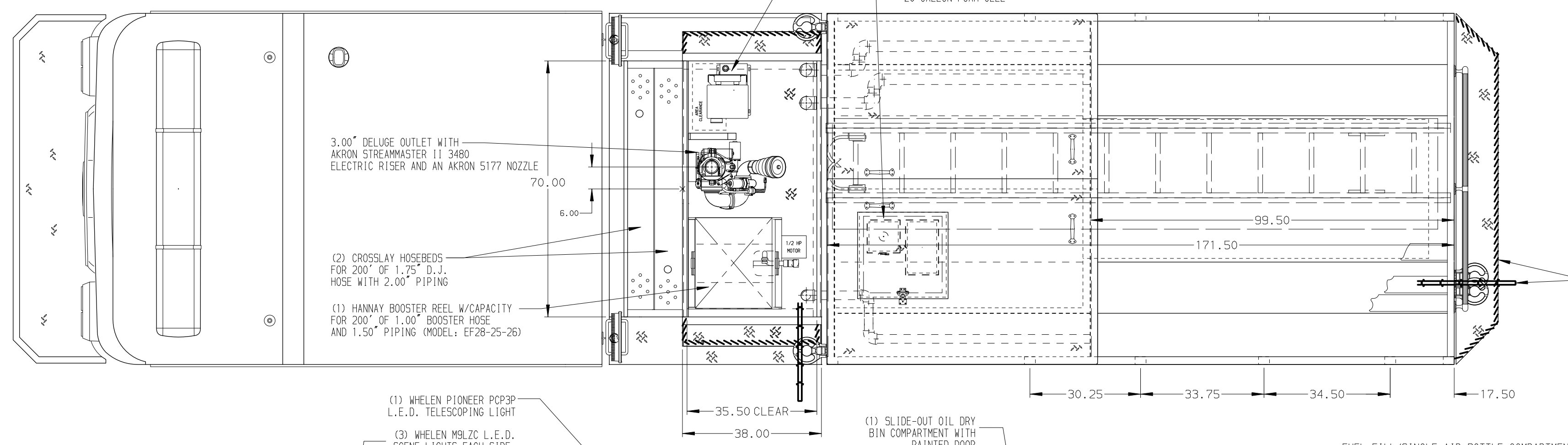


HOSEBED CAPACITIES

1	300' OF 1.50" HOSE
2	500' OF 3.00" HOSE
3	1000' OF 5.00" HOSE
4	200' OF 3.00" HOSE
5	200' OF 3.00" HOSE



ALUMINUM BODY MAX O.A.H. 116" MAX O.A.L. 420" SIDE ROLL AND FRONTAL IMPACT PROTECTION

NOTE
DIMENSIONS SHOWN ARE APPROXIMATE AND ARE SUBJECT TO MINOR DEVIATIONS AS MAY OCCUR OR BE NECESSARY IN CONSTRUCTION. MINOR DETAILS NOT SHOWN.

- ONSPOT AUTOMATIC TIRE CHAINS TO BE PROVIDED AT REAR
- BATTERY CHARGER INDICATOR LOCATED ON DRIVER'S SEAT RISER
- DUAL L.E.D. LIGHT STRIPS LOCATED IN HOSE BED
- DRIP PAN GUARD FOR ROLL-UP DOORS L51, L52, L53, R51, R52, R53, AND B1
- ONE FULL WIDTH/DEPTH ADJUSTABLE SHELF IN COMPARTMENTS PER ORDER
- ONE ADJUSTABLE TILTING SLIDE-OUT TRAY IN COMPARTMENTS R53 AND L51
- ONE FLOOR MOUNTED SLIDE-OUT TRAY IN COMPARTMENT R52
- ONE FLOOR MOUNTED SLIDE-OUT TRAY WITH SPECIAL SEAT HEIGHT IN COMPARTMENT R53
- TWO ALUMINUM SWING-OUT TOOLBOARDS IN L52
- CTECH DRAWER ASSEMBLY IN COMPARTMENT L53
- PARTITION BETWEEN COMPARTMENTS L51/B1 AND R51/B1
- ONE VERTICAL PARTITION IN COMPARTMENTS R51 AND L53
- AIR INLET WITH DISCONNECT COUPLING LOCATED IN DRIVER SIDE STEP WELL
- SHORELINE RECEPTACLE WITH KUSMAUL SUPER AUTO-EJECT LOCATED IN DRIVER SIDE STEP WELL
- ONE MODEL 17 LITTLE GIANT LADDER IN COMPARTMENT L52
- ONE FLOOR MOUNTED SLIDE-OUT TRAY WITH SIDE SLIDES IN COMPARTMENT L51

				JOB NO.	35743
				SCALE	DATE
				DRAWN BY	05APR21
				CHECKED BY	09APR21
				SHEET SIZE	SHEET NO.
				D	1 OF 1

REV	DATE	BY	CH	ENFORCER	TITLE	FOR	DWG NO.
06DEC21	JUS	DTJ			CHASSIS DATA	2000-D-750P, 730G WATER W/20G FOAM, 171" BODY LADDER TUNNEL THRU TANK, (2) CROSSLAYS, DELUGE	35743AD
03AUG21	JUS	DTJ			MAKE	CITY OF ATHENS, TN	
29JUN21	JUS	DTJ			PIERCE	ATHENS TENNESSEE	
07MAR21	JUS	DTJ			MODEL		