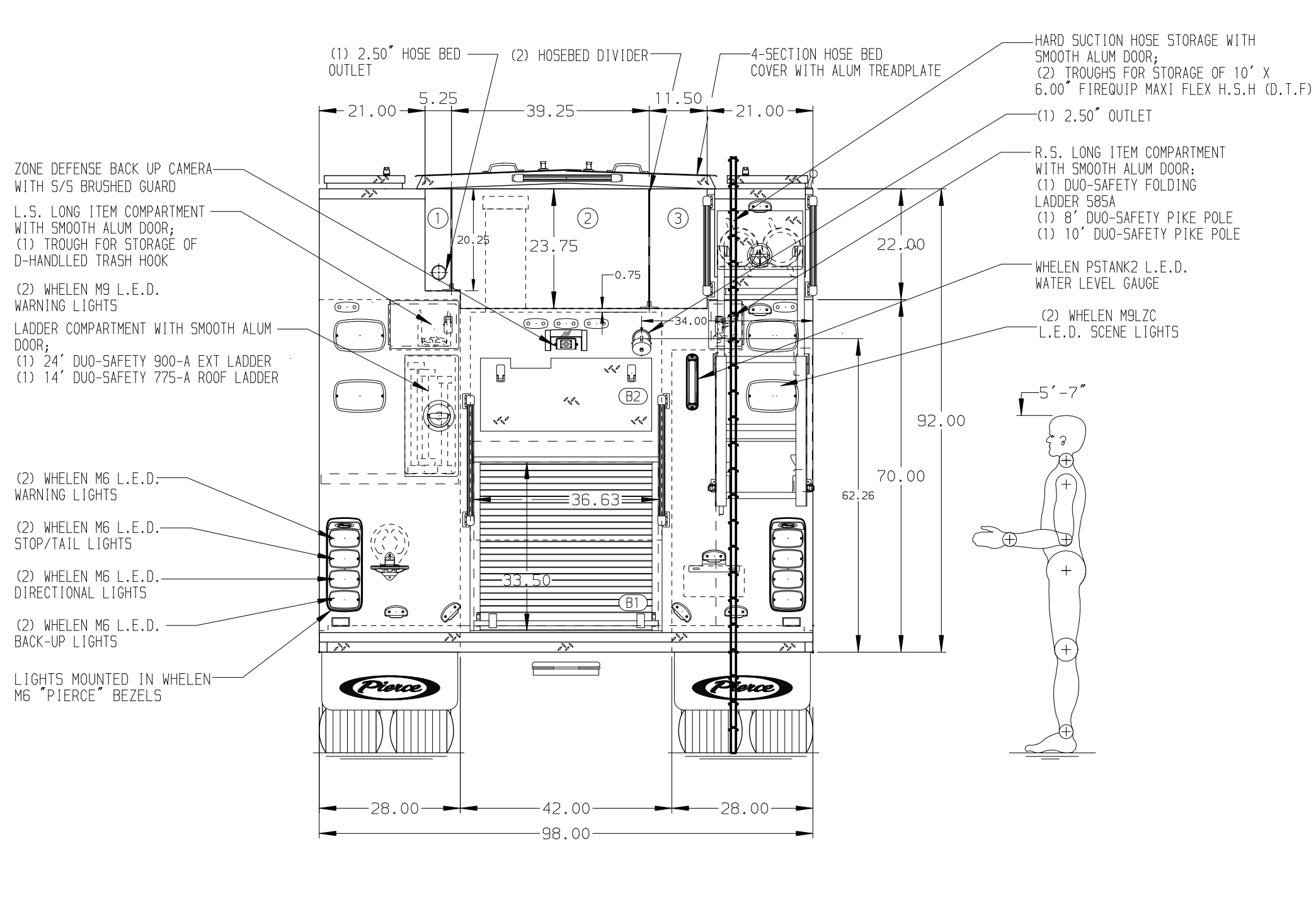
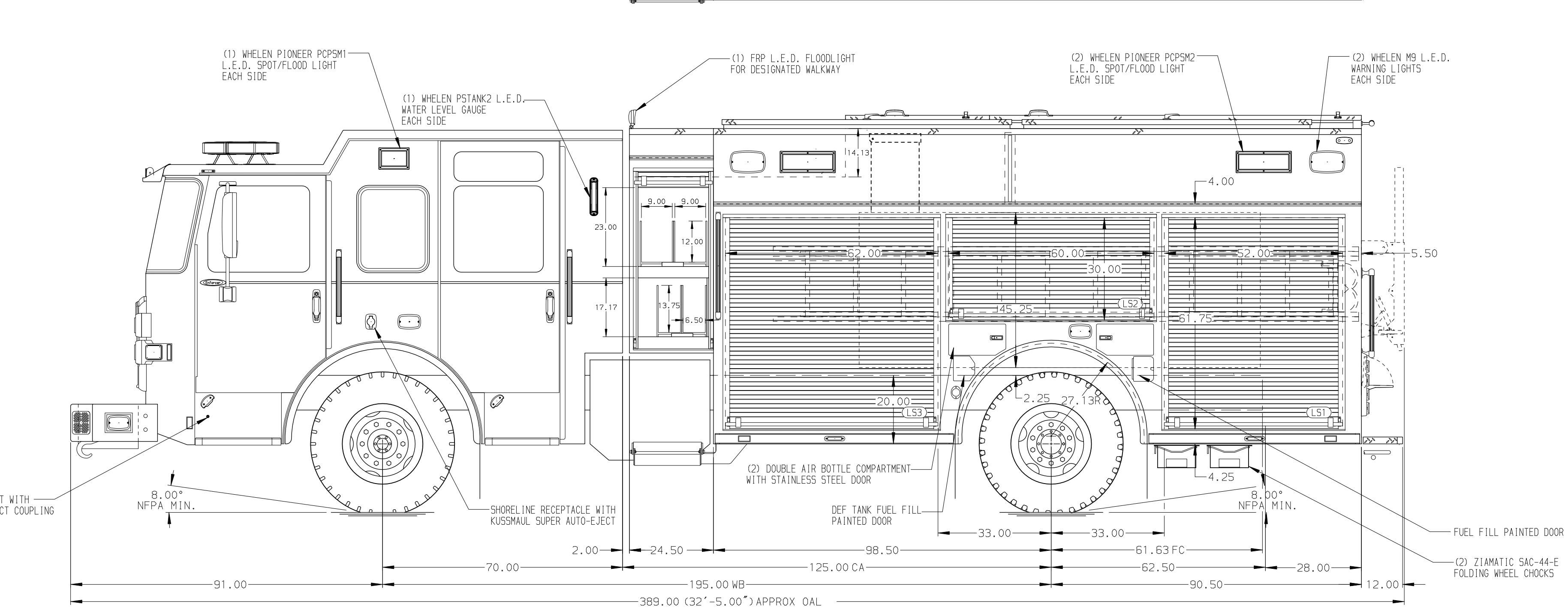


**HOSEBED CAPACITIES**

- ① 200' OF 2.50" D.J. POLY HOSE
- ② 1500' OF 4.00" L.D. HOSE
- ③ 500' OF 3.00" HOSE



ALUMINUM BODY

SIDE ROLL AND FRONTAL IMPACT PROTECTION

**NOTE**  
DIMENSIONS SHOWN ARE APPROXIMATE AND ARE SUBJECT TO MINOR DEVIATIONS AS MAY OCCUR OR BE NECESSARY IN CONSTRUCTION. MINOR DETAILS NOT SHOWN.

1. BATTERY CHARGER LOCATED BEHIND DRIVER SEAT
2. BATTERY CHARGER INDICATOR LOCATED ON DRIVER'S SEAT RISER
3. DUAL L.E.D. LIGHT STRIPS LOCATED IN HOSE BED
4. ONE FULL WIDTH/DEPTH ADJUSTABLE SHELF IN COMPARTMENT(S); RS1; TWO IN LS1,LS3 & RS3
5. ONE ADJUSTABLE TILTING SLIDE-OUT TRAY IN COMPARTMENT(S); RS1 & RS2
6. CABLE RELEASE LATCH WITH SINGLE HAND OPERATION FOR TRAY IN COMPARTMENT(S); RS1 & RS2
7. ONE FLOOR MOUNTED SLIDE-OUT TRAY IN COMPARTMENT(S); LS1, RS1, & RS3
8. ONE SWING-OUT ALUMINUM TOOL BOARD IN COMPARTMENT(S); LS2
9. OIL DRY HOPPER LOCATED IN COMPARTMENT; LS1

10. ONE SIDE WALL PEGBOARD IN COMPARTMENT; RS3
11. CTECH (2) DRAWER ASSEMBLY IN COMPARTMENT(S); LS3
12. PARTITION BETWEEN COMPARTMENT(S); LS1/RS1 & RS1/RS3
13. ONE VERTICAL PARTITION IN COMPARTMENT; RS3
14. ALUMINUM PEGBOARD ON BACK WALL OF COMPARTMENT(S); LS3 & RS1
15. THREE ADDITIONAL POLY TRAYS SHIPPED LOOSE

REV	DATE	BY	CH	ENFORCER
1	18JUN21	JRC	-	CHASSIS DATA
2	29MAR21	JRC	CSH	MAKE
3	19FEB21	JRC	CSH	PIERCE
4	23NOV20	JRC	EGO	MODEL

TITLE	1500-D-750P, 750G WATER, 189" RESCUE PUC PUMPER	JOB NO.	35737
FOR	SOUTH HADLEY FIRE DISTRICT 2 SOUTH HADLEY, MASSACHUSETTS	SCALE	1:24
DWG NO.	35737AD	DRAWN BY	JRC
		CHECKED BY	EGO
		SHEET SIZE	D
		SHEET NO.	1 OF 1